

THE **FREE** WESSEX ARTS AND CULTURE GUIDE

EVOLVER **magazine**



July and August 2025

Exhibit A

July and August 2025



Richard Castor Jeffery: Bin Night

Oils on cradled panel, 40 x 40 cm, 2024

ARTIST STATEMENT: "I'm interested in reflecting the everyday built environment, and am drawn to the abstract qualities of pattern, shape and colour that may otherwise go unnoticed. I find these in abundance in the shopfronts and signage of Bristol's Victorian shopping streets. I'm inspired at a deep level by architectural representation - how it strips away extraneous details and context, creating its own language. This can be both abstract and recognisable, representing the world in simplified and graphic terms. This piece, a group of shops on the Gloucester Road at twilight, captures that rare moment when the interiors of the shops are illuminated, seen in contrast against the rapidly fading colours of the exterior, giving an electric glow to the tapestry of the streetscape.

'BRISTOL IN COLOUR'

Selected framed prints of the Gloucester Road are now available exclusively at Niche Frames, 4 - 6 Zetland Road, BRISTOL, BS6 7AE. nicheframes.co.uk.

rcjfineart.co.uk

Headlines

July and August 2025



EVENING DRESS, SILK SATIN AND NET
(1815 - 1820)



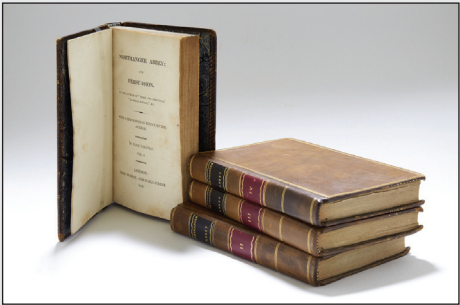
PAIR OF SHOES, LEATHER AND SILK
(c. 1800)



AUB STUDENTS RECREATE SCENES FROM
'PERSUASION' AT LYME REGIS



HUGH THOMPSON 'A GENTLEMAN POLITELY DREW
BACK' for 'PERSUASION' (Watercolour)



'NORTHANGER ABBEY' AND 'PERSUASION'
FIRST EDITIONS (1818)

Jane Austen: Down to the Sea

2025 celebrates 250 years since the birth of one of Britain's most well-loved authors, Jane Austen. Born in 1775 Austen achieved much in her relatively short life, and the Dorset Museum & Art Gallery will be one of many national venues celebrating her work this year. *Down to the Sea* focuses on Austen's relationship with the sea and coastal towns, she was schooled in the Southwest and Dorset towns feature in her novels. In *Persuasion* Anne Elliot is "restored" by her visit to the seaside, and Lyme Regis stirs emotions in Louisa Musgrove as she is transfixed by the harbour wall around the bay. The exhibition explores the sea both as a location and as a character in Austen's novels, as well as its effect on the author herself.

Items on display include Regency costume - riding jackets, ballgowns and summer dresses, Jane Austen's letters, paintings and contemporary objects - such as seaside guidebooks, as well as interactive spaces. The museum has worked with students from Arts University Bournemouth to recreate seaside scenes which enable visitors to connect with this story in ways that are relevant, informative and fun, and appealing to both local residents and visitors. *Down to the Sea* highlights the importance of the sea in Britain's Regency era from holiday getaways to naval battles, Austen had two brothers in the Navy so was well informed on military pursuits. The practice of sea bathing was becoming fashionable as a health

treatment, and Austen herself praised its benefits after contracting a fever in Lyme Regis. In *Pride and Prejudice* Mrs Bennet said that "a little sea bathing would set me up forever". The exhibition explores this interest, from bathing huts, and bathing machines pulled by horses to the clothes typically worn. This is a fantastic opportunity to learn more about Jane Austen, as well as the role of Dorset as a seaside destination. *Suzy Rushbrook*

14 June - 14 September: Dorset Museum & Art Gallery, High West Street, DORCHESTER, DT1 1XA. 10am - 5pm. . 01305 262735 dorsetmuseum.org



Follow **evolvermagazine** on Instagram



The Forgotten Photographer

100 years ago photographer C E Kille was at the height of his career. While his contemporaries took portraits or sold postcards, Kille had a keener eye and used his creativity and technical ability to produce real works of art. In the 1920s images were taken on glass plates with the exposures carefully managed by eye, then followed by hours spent in the darkroom developing and printing images.

The 1920s and 1930s saw advances in printing technology that lead to a boom in photojournalism and the use of photography in advertising. An ideal outlet for Kille's talent, cuttings scrapbooks shows the breadth of his work including national daily papers,

advertising contracts and competitions, as well as his many articles for photographic journals.

When he closed his business, glass plates from a lifetime's work were thought lost, left in the shop basement and later thrown into a skip by builders in the 1960s. Ten years ago his granddaughter, clearing boxes for a house move, found a treasure trove of some 400 plates and prints. This tantalisingly small selection of his work is full of charming and engaging pictures of his family as well as many depicting the local area, now of historical significance – the demolished Minehead Lido, the last launch of the wooden lifeboat, old farming methods, ships and their sailors, and local characters, all

captured with careful composition and impactful lighting.

This year, for the first time, these images will be on show in his home town of Minehead, not 500 yards from where he had his darkroom. This forgotten photographer will be back in the heart of the community which once knew and loved him, providing a window onto the 1920s and '30s detailing period clothes, vehicles and agricultural technology, and celebrating Minehead, Exmoor and the South West and capturing a bygone era.

Suzy Rushbrook

26 July - 9 August: Townsend House, Townsend Road, MINEHEAD, TA24 5RG. 10am - 4pm. 07769 276166.



Thelma Hulbert Gallery

THG Open 2025

12 July – 23 August 2025

Generously sponsored by Bearnes Hampton & Littlewood auctioneers

Elmfield House, Dowell Street, Honiton, Devon EX14 1LX
01404 45006 | info@thelmahulbert.com | thelmahulbert.com
Open: Tues – Sat 10am – 5pm | Free admission, donations welcome





thelmahulbertgallery





Jane Sheppard Membrane

Preview night 19 June 2025, 6 - 8pm

Exhibition dates 20 June - 21 July 2025

Long Gallery

Mon - Sun 10am - 4pm

2 Bridge Street

Frome BA11 1BB

blackswanarts.org.uk



Walford Mill Crafts

The creative home for
designer makers in Dorset



Come and visit Walford Mill Crafts and you'll find inspiring exhibitions, pop-ups for up and coming makers along with our creative on-site makers in their open studios.

Book the kids on a children's art class or treat yourself to a creative workshop. We also hold Courtyard Craft Markets every second Saturday in the month starting from March.

Don't forget to enjoy a delicious lunch at the Little Pickle Cafe while you visit.

www.walfordmillcrafts.co.uk

Knobcrook Road, Wimborne BH21 1NL - Registered Charity No. 1049540

Affordable studio spaces available, contact: admin@walfordmillcrafts.co.uk



Percy Lizzard

NEW PAINTINGS

Friday 15 - Monday 18 August

LIZZARD GALLERY

Shaftesbury Road, Shaftesbury, Dorset SP7 9NR

10am - 4pm daily

Enquiries: 07979 590790

ILMINSTER ARTS CENTRE

GALLERY FOR HIRE

DATES
AVAILABLE
FOR 2026



exhibitions@ilminsterarts.org.uk

www.ilminsterartscentre.com

East Street, Ilminster, TA19 0AN 01460 54973



Headlines



DORSET MUSEUM & ART GALLERY

The Dorset Open

Dorset Visual Arts (DVA), in partnership with Dorset Museum & Art Gallery (DMAG), is delighted to launch a brand-new major open art competition.

The exhibition is being hosted by DMAG and produced by DVA, with support from Dorchester Arts, Arts in Hospital and Evolver Magazine.

Selected finalists will have their work exhibited in a professionally curated show at DMAG in Dorchester from 18th October until 30th November 2025.

This is an exciting opportunity for artists working in all media to submit work that either captures the essence of the region's landscape, people, history, or culture or explores their relationship to the area.

With an extensive range of prizes and a professional panel of judges, *The Dorset Open* will appeal to established as well as emerging talent.

Entries can be submitted from Tuesday 1st July at 9am.

See dorsetvisualarts.org/thedorsetopen for submission details.



JOHN GAMMANS

Somerset Open Studios

Somerset Art Weeks, the county's annual celebration of art which has been running since 1994, returns for autumn 2025 with its iconic *Somerset Open Studios* event.

Over the past thirty years, SAW has developed a vibrant community of artists and makers throughout Somerset, and this autumn, from the 13th to 28th September, SAW members will once again be opening their studio doors and inviting visitors to see their creative practice in action from behind the scenes.

The *Somerset Open Studios* event presents a rare opportunity to step directly into the working environments of artists, with over 150 venues to visit in all corners of the county, plus a multitude of interactive workshops and talks on offer throughout, including the Family Friendly programme each weekend.

The SOS guide will be available at tourist spots and libraries from August, and a digital version and app will be available on the SAW website: somersetartworks.org.uk

Diary Dates



MITSU TRIO, 26 and 27 September

- THE DORSET OPEN**
Deadline for entries: 31 August
dorsetvisualarts.org/thedorsetopen
- 'BROADBEAT'**
6 September
eventbrite.co.uk
- RWA OPEN 172**
6 September - 4 January
rwa.org.uk
- B-SIDE BIG WEEKEND**
11 - 14 September
b-side.org.uk
- 'INSIDE OUT'**
12 - 21 September
insideoutdorset.co.uk
- SOMERSET OPEN STUDIOS**
13 - 28 September
somersetartworks.org.uk
- EVOLVER MAGAZINE '25' EVENT**
14 September
evolver.org.uk
- MITSU TRIO**
26 and 27 September
concertsinthewest.org
- VOICE**
24 and 25 October
concertsinthewest.org



The Pound

The 16th Pound Arts Open Exhibition

Opening Night: Thursday 24 July, 6.30pm
Runs: 24 July - 25 August

The Pound Arts Centre, Corsham, Wiltshire, SN13 9HX
(01249) 701628 | poundarts.org.uk | [@poundarts](https://www.instagram.com/poundarts)

Visual Arts

July and August 2025



MERLYN CHESTERMAN 'LONG SWIM'

Sladers' Summer Print Show

"Original woodcuts, wood engravings, aquatint, carborundum and drypoint prints by Julian Bailey, Martyn Brewster, Merlyn Chesterman, Michael Fairclough, Sally McLaren, and Howard Phipps, alongside ceramics by Björk Haraldsdóttir and furniture by Petter Southall. Affordable works of art that celebrate the places, people and things that make life worth living."

19 July - 13 September: Sladers Yard, WEST BAY, Bridport, DT6 4EL. Wednesday - Saturday 10am - 4.30pm. 01308 459511 / sladersyard.co.uk.

'3 PHOTOGRAPHERS'

Until 1 July

The Gallery, Shaftesbury Arts Centre, Bell Street, SHAFTESBURY, SP7 8AR. Monday - Saturday 10am - 4pm. shaftesburyartscentre.org.uk. Photographs by Martin Black, Trevor Toms and Tony Bates.

'BENEATH THE SURFACE'

Until 5 July

Museum & Art Swindon, Euclid Street, SWINDON, SN1 2JH. Tuesday - Saturday 10.30am - 4.30pm. 01793 466556 / museumartswindon.com. "Beneath the Surface is the first major survey of the important collection of studio ceramics held by Museum & Art Swindon."

'COMMUNITY'

Until 5 July

Yeovil Art Space, Vicarage Walk, Quedam Centre, YEOVIL, BA20 1EU. Wednesday - Friday 12noon - 4pm, Saturday 11am - 4pm. yeovilartspace.uk. "Community takeover of the gallery space."

WELLS PAINTING GROUP

Until 5 July

Wells Cathedral, Cathedral Green, WELLS, BA5 2UE. Monday - Saturday 10am - 4pm, Sunday 11am - 3pm. 07968 050526.

'FIRST IMPRESSIONS'

Until 6 July

Victoria Art Gallery, Bridge Street, BATH, BA2 4AT. Tuesday - Sunday 10.30am - 5pm. £8 / £3.50. 01225 477233 / victoriagal.org.uk. "A behind-the-scenes look at the art of printmaking, featuring works by Lucian Freud, Frank Auerbach and Bridget Riley, this exhibition showcases dozens of printers' proofs."

'SPRING 2025'

Until 6 July

Tincleton Gallery, The Old School House, TINCLETON, near Dorchester, DT2 8QR. Saturday and Sunday 10am - 4pm. 01305 848909. "Mixed show featuring gallery artists and invited guests."



The Garden Gallery
EMMA MAWSTON
28 June – 16 August



Market Place, Somerset, Somerset TA11 7NB
Tuesday - Saturday 10am - 5pm
01458 273008 • acearts.co.uk

Visual Arts

SOUTH WEST SOCIETY OF BOTANICAL ARTISTS
Until 7 July

Fine Foundation Gallery, Durlston Country Park, Lighthouse Road, SWANAGE, BH19 2JL. 10am - 4pm. swsba.org.uk. "Original art, prints and cards for sale."

ANDY BAKER
Until 12 July

Taunton Library, Paul Street, TAUNTON, TA1 3XZ. Monday and Tuesday 9.30am - 5.30pm, Wednesday 9.30am - 7pm, Thursday and Friday 9.30am - 5.30pm, Saturday 9.30am - 5pm. 07486 909005 / andy-baker-art.co.uk. Paintings.



'BEAUTIFUL, SWIFT AND BRIGHT'
Until 13 July

Sladers Yard, WEST BAY, Bridport, DT6 4EL. Wednesday - Saturday 10am - 5pm. 01308 459511 / sladersyard.co.uk. "A glorious celebration of the English rural landscape by Louise Balaam, Nick Jones, James Lynch, Gabriele Koch, and Petter Southall, each of whom has a thrilling, richly developed style of their own, admired by collectors across the world."

Above: Louise Balaam 'August Cornfield, Blazing' (Oil on panel, 30 x 30cm)

SOUTH WEST SCULPTORS
Until 13 July

Sou'-Sou'-West Gallery, Manor Yard, Symondsbur Estate, SYMONDSBURY, Bridport, DT6 6HG. 10.30am - 4.30pm. 01308 301326 / sousouwest.co.uk. "Annual sculpture show."



HELEN FLOCKHART 'GREEN EDEN'

Strange Magic

"Strange Magic is inspired by The Power of Myth by Joseph Campbell, which touches on the function of artists as mythmakers and communicators of experiences. Curated by artist Leslie Glenn Damhus, this exhibition weaves together spellbinding works by Malcolm Ashman, Beth Carter, Dorcas Casey, Leslie Glenn Damhus, Joseph Dilnot, Helen Flockhart, Derrick Guild, Marie-Claire Hamon, Angela Lizon, Pinkie Maclure, Ian Middleton, Morwenna Morrison, Kim L Pace, Hamish Young, and Pippa Young."

5 - 25 July: Andelli Art, Mendip House, Upper Breach, South Horrington, WELLS, BA5 3QG. Wednesday - Saturday 10am - 5pm. andelliart.com.

'CHRISTCHURCH IN BLOOM'
Until 14 July

Hatch Gallery, 7a Church Street, CHRISTCHURCH, BH23 1BW. Tuesday - Saturday 11am - 4pm. 07787 517958 / hatchgallery.co.uk. "Flower paintings by Jenny Sutton, Katie Bren, and Bess Harding."



'BIOPHILIA'
Until 14 July

Level 1, North Wing, Dorset County Hospital, William Avenue, DORCHESTER, DT1 2JY. 8am - 8pm. dchartsinhospital.org.uk. "Exhibition in collaboration with Dorset Visual Arts and the Arborealists. Come and see how artists have responded to this word and why images of nature are so important during recovery."

Above: Tom Genders

'THE OPEN 2025'
Until 18 July

Ilminster Arts Centre, The Meeting House, East Street, ILMINSTER, TA19 0AN. Tuesday - Saturday 9.30am - 3pm. 01460 54973 / ilminsterartscentre.com. "Annual judged exhibition featuring selected work from across the region."

'SERENDIPITY'
Until 19 July

Fisherton Mill, 108 Fisherton Street, SALISBURY, SP2 7QY. Monday - Saturday 9.30am - 5pm. 01722 500200. "Mixed media group exhibition exploring themes around nature, the human experience and finding joy in the unexpected."

'IN THE WIND'S HANDS'
Until 19 July

Bo Lee and Workman, West End, BRUTON, BA10 0BH. Wednesday - Saturday 10am - 5pm. 07940 995384. "Six artists explore texture as a powerful, emotive language, inviting viewers into a richly tactile, expressive landscape."



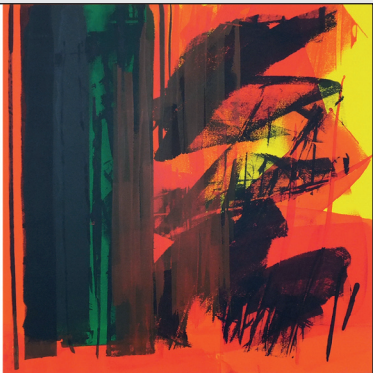
Louise Balaam NEAC RWA Sweeping cloud, Colonsay oil on canvas 120 x 130cm.
Right: Martyn Brewster ARE Lowick 623 silkscreen monoprint 58 x 58cm framed.

Beautiful, swift and bright
JAMES LYNCH • LOUISE BALAAM • NICK JONES
GABRIELE KOCH ceramics continues until 12 July

Summer Print Show 19 July - 13 September
JULIAN BAILEY • MARTYN BREWSTER
MERLYN CHESTERMAN • MICHAEL FAIRCLOUGH
SALLY McLAREN • HOWARD PHIPPS
PETTER SOUTHALL furniture
BJÖRK HARALDSDÓTTIR ceramics

SLADERS YARD

Contemporary Art & Craft Gallery West Bay DT6 4EL
@sladersyard 01308 459511 gallery@sladersyard.co.uk
Weds - Sat 10am - 4.30pm www.sladersyard.co.uk



Saturday nights at CAFÉ SLADERS
Book now and relax!
Also lunch Weds - Saturday.

BRIDPORT
ARTSCENTRE

REGGAE BRIDPORT

A PHOTOGRAPHIC EXHIBITION BY ADRIAN BOOT EXPLORING
THE WORLD OF REGGAE - FROM ITS ORIGINS TO ITS ICONS



26TH JULY - 13TH SEPTEMBER
ALLSOP GALLERY | 10AM - 4PM | TUE - SAT



Come and join our friendly Art Community in Sherborne

- EXPERIENCED TUTORS
- INSPIRING STUDIOS, WELCOMING ENVIRONMENT
- VARIED WORKSHOPS / PART-TIME COURSES FROM HALF DAY TO 34 WEEKS
- ALL ABILITIES WELCOME
- CITY & GUILDS LEVEL 2 QUALIFICATIONS IN ART & DESIGN, TEXTILES, INTERIOR DESIGN
- DROP-IN SESSIONS



For more information, please give us a call,
pop in and see us, email or visit our website.

07549 357138 / 07917 190309

southwestartcourses.co.uk

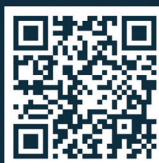
Email admin@southwestartcourses.co.uk

Compton Studios, Compton Court
Coldharbour, Sherborne, DT9 4AG



HEART OF
THE TRIBE
ART GALLERY

Please scan the QR
code to visit our
website and learn more
about our gallery,
events & exhibitions



74 High Street
Glastonbury
BA6 9DZ
Heartofthetribe.com
01458 780046



LASTING IMPRESSIONS

EXHIBITION OF ORIGINAL PRINTS

3RD JULY UNTIL 7TH SEPTEMBER

SATURDAY 5TH JULY 1-4PM OPEN VIEW & GARDEN PARTY

An exciting collection of emerging and established artists
exploring the medium of print making in its various forms;
linocut, etchings, woodcut, screen prints, risograph and more!

5 YEAR ANNIVERSARY
CELEBRATION

1-6PM SATURDAY 30TH AUGUST
Join us for drinks, music & more...



Explore our latest art exhibition, experience our award-winning garden and enjoy complimentary hot drinks.



JANE SHEPPARD: 'MEMBRANE'
Until 21 July
Black Swan Arts, 2 Bridge Street,
FROME, BA11 1BB. Monday -
Sunday 10am - 4pm. 01373 473980
/ blackswanarts.org.uk. "Jane
Sheppard describes her large
ceramics as 3D drawings that
harness areas of space. Her work
takes inspiration from the neolithic
landscape and prehistoric artefacts,
patterns and symbols from across
the globe. Working with smoke and
natural pigments she aims to create
pieces that are a meeting point of
time and cultures."



'HUE'
Until 27 July
White Chalk Gallery, 5 Old Swan
Yard, DEVIZES, SN10 1AT. Thursday -
Saturday 10am - 5pm. 07398
970439 / whitechalkgallery.co.uk.
"Artwork by Bryony Cox and
ceramics by Rob and Debbie Rivett."
Above: Bryony Cox 'Skirting Across'
(Oil on canvas)
'SHARING LOVE'
Until 3 August
RWA, Queen's Road, Clifton,
BRISTOL, BS8 1PX. Tuesday - Sunday
10am - 5pm. 0117 973 5129 /
rwa.org.



'LUNARIA ' (Oil on canvas, 100 x 120 cm, 2025)

Fernando Velazquez: Flight to Ades

"The new series by Spanish artist Fernando Velazquez, *Flight to Ades*, explores realms where internal visions of the world give birth to powerful, otherworldly imagery. Velazquez has in the past collaborated with musicians, exploring and transforming aural information into highly original paintings such as, a monumental piece commissioned by the Rosenberg and Kaufman Gallery in New York, inspired by the compositions of iconic American composer George Crumb. *For Flight to Ades*, Velazquez has drawn deep inspiration from the music of British composer Thomas Adès. In this series, Velazquez captures the ephemeral beauty found in the complexities of sound and a timeless use of light and dark on canvas, offering a space where the viewer can reflect, dream, and experience a profound sense of transcendence. Through the interplay of form, movement, and atmosphere, *Flight to Ades* invites us to enter a new territory where the echoes of the past merge with a new language in painting."

8 July - 19 September: The Corn Exchange, High East Street, DORCHESTER, DT1 1HF. Tuesday - Saturday 10am - 4pm. 01305 266926 / dorchesterarts.org.uk.



THE GALLERY

Shaftesbury Arts Centre, 13 Bell Street,
Shaftesbury, SP7 8AR
Now taking bookings for exhibitions
in 2026 and 2027
One week or two week slots available
All enquiries and further details:
gallery@shaftesburyarts centre.co.uk



Visual Arts

'SOFT POWER'
Until 10 August
RWA, Queen's Road, Clifton,
BRISTOL, BS8 1PX. Tuesday - Sunday
10am - 5pm. £9.90 / £5.45. 0117 973
5129 / rwa.org.uk. "Textile works
highlighting how cloth can play a
unique role in telling our stories."

'COMO LA CIGARRA'
Until 10 August
Arnolfini, 16 Narrow Quay, BRISTOL,
BS1 4QA. Tuesday - Sunday 11am -
6pm. arnolfini.org.uk. "Celebrating
Latin American identity, resilience
and creativity, the show features
richly textured, collaborative textile
works inspired by stories of
migration, home and womanhood."

**EMMA MAWSTON: 'THE GALLERY
GARDEN'**
Until 16 August
ACE Arts, Market Place, SOMERTON,
TA11 7NB. Tuesday 11am - 5pm,
Wednesday - Saturday 10am - 5pm.
01458 273008 / acearts.co.uk. "This
imaginative collection is a vibrant
celebration of flora and fauna,
featuring illustrations that reflect
Emma's passion for nature and
showcase her artistic talent. The
artwork is drawn and painted on
various materials, including boxes,
vintage wallpaper, reclaimed slate,
and bee bricks that encourage
biodiversity, creating a harmonious
blend of art and ecology."

**'YOU'RE NOT ALONE: WOMEN IN
ART 2025'**
Until 17 August
Boscombe Arts Depot, 616 - 622
Christchurch Road, Boscombe,
BOURNEMOUTH, BH1 4BP.
Thursday - Sunday 11am - 5pm.
gotbeaf.co.uk. "This exhibition
brings together ten artists,
highlighting their experiences as
women outside mainstream art and
education, and foregrounding their
significant contributions to
contemporary art."

'EDUCATION PROJECTS'
Until 24 August
Studio 10, East Quay, Harbour Road,
WATCHET, TA23 0AQ. 10am - 5pm.
eastquaywatchet.co.uk. "Work made
by local school students."



GREG POOLE 'GULL AND WAVE' (Monotype)

Bird

"Drawing from our hidden stores of artwork, as well as welcoming new pieces, *Bird* brings together original prints, paintings and sculpture created by some of Britain's foremost wildlife artists. At Trymwood Studios we dedicate ourselves to exhibiting work by artists passionate about making beautiful work rooted in focused observation and naturalist understanding. A commitment to encountering birdlife in the garden, on the pavement, in a car park, on a nature reserve, whether feeding, hunting or flirting for a mate, motivates our artists, together with a desire to make visually striking artwork."

4 - 18 July: Trymwood Studios, Trym Road, WESTBURY-ON-TRYM, Bristol, BS9 3JN. Friday - Sunday 11am - 4pm.
trymwoodstudios.co.uk.

NOTICING THE NOW
Until 30 August
Musgrove Gallery, Musgrove Park
Hospital, TAUNTON, TA1 5DA.
Monday - Sunday 8am - 8pm.
noticingthenow.co.uk. "Photography
collective showcasing the beauty of
the everyday captured with
smartphone cameras. Viewers are
invited to contribute their own
smartphone images."



**KIT GLAISYER: 'THE CINEMATIC
LANDSCAPE'**
Until 31 August
Bridport Contemporary, 11 Downes
Street, BRIDPORT, DT6 3JR. Saturday
10am - 3pm. 07983 465789 /
kitglaisyer.com. "Enjoy the serenity of
Kit Glaisyer's panoramic Dorset
landscapes that re-imagine the
romantic sublime with a
contemporary twist."

ALICE LADENBURG: 'LIFESCAPE'
Until 31 August
Galleries 1 and 2, East Quay,
Harbour Road, WATCHET, TA23
0AQ. 10am - 5pm. 01984 263103 /
eastquaywatchet.co.uk. "Alice
Ladenburg's new exhibition explores
human perception, navigation, and
our interconnectedness with the
natural world, highlighting key
landscapes across Exmoor and West
Somerset."

**JULIA ATKINSON:
'INTERCHANGE'**
Until 6 September
Young Gallery, Salisbury Library,
Market Walk, SALISBURY, SP1 1BL.
10am - 5pm.
younggalleriesalisbury.org.uk.
"Vibrant screen prints."

'SERIOUSLY...'
Until 13 September
Museum & Art Swindon, Euclid
Street, SWINDON, SN1 2JH. Tuesday
- Saturday 10.30am - 4.30pm. 01793
466556 / museumartswindon.com.

Artist Collective



Exhibition
5 July to 13 July 2025
10am to 4pm daily
Kennaway House, Sidmouth, EX10 8NG
01395 515551 / artistcollective.uk

Multi-artist, free entry
EXHIBITION
18-20 July
Fri/Sat 10-5, Sun 10-4
Eype Church Centre
for the Arts,
nr Bridport, DT6 6AR



18th to 20th July
Fri/Sat 10am to 5pm
Sun 10am to 4pm

Details:  ArtatEype  07718 078453

EVOLVER MAGAZINE
2025
25 YEARS
EVENT
14 September



EAST
QUAY

LIFESCAPE
24.05.2025 – 31.08.2025
Alice Ladenburg

@eastquaywatchet
eastquaywatchet.co.uk
Open daily 10am-5pm



Supported using public funding by
**ARTS COUNCIL
ENGLAND**



MAY MORRIS
ART & ADVOCACY

5 April - 5 October 2025

Russell-Cotes Art
Gallery & Museum
East Cliff Promenade,
Bournemouth,
BH1 3AA



RUSSELL-COTES
HOUSE • GALLERY • GARDEN
russellcotes.com

CALLING ALL ARTISTS!

THE
DORSET
OPEN
2025

at Dorset Museum & Art Gallery
18th October - 30th November

Produced by Dorset Visual Arts

PRIZES:

- ◆ First Prize: £500
- ◆ Second Prize: £250
- ◆ Young / Emerging Artist: £200
- ◆ Climate Emergency Award: £200
- ◆ Dorchester Arts solo exhibition during Dorset Art Weeks 2026
- ◆ Dorset County Hospital exhibition
- ◆ DVA Prize: 1 year DVA Membership + free Dorset Art Weeks 2026 entry + Sherborne Times feature
- ◆ DMAG Prize: Arts and Culture Bundle
- ◆ Framing Prize: Provided by Mount Collective
- ◆ Evolver Magazine feature
- ◆ People's Winner (public vote): £100 + showcase on DMAG digital platforms

SUBMISSIONS OPEN 1ST JULY:

dorsetvisualarts.org.uk

Deadline: 31st August, 5pm

SELECTION PANEL:

Freeny Yianni (Curator and Gallerist, Close Ltd)
Ian Middleton RWA (Sculptor)
Jack Dickson (Artist, BBC1 Extraordinary Portraits)
Simon Barber (Editor, Evolver Magazine)
Suzy Rushbrook (Curator, Arts in Hospital)

Supported by Dorchester Arts, Dorset Museum & Art Gallery, Close Ltd, Evolver Magazine, Dorset County Hospital, Mount Collective, Sherborne Times



Dorset
Museum
& Art Gallery

Dorchester Arts



SHERBORNE
TIMES

Sou'-Sou'-West

Unit 4&6 Manor Yard
Symondsbur Estate
Bridport DT6 6HG

21-30 Aug Make it

After the success of our winter show, **Make It** returns this summer with fresh opportunities for **craft + print + makers** of all kinds. Details on our website.

19 Jul-10 Aug Sensations

Call for entries — deadline 13 July
Open to all, full details online.

02-08 Jul We All See Things Differently / 11-30 Jul Natural Harmonies / 01-18 Aug Catching Rainbows: Russell Coulson / 16-31 Aug Andy Rollo / Coming in Sep Steve Manning / Mathew Pearce / Jan Dean / Bridport Art Society

Free Parking • Cafe

Walking • Shopping

Daily: 10:30 - 16:30

Instagram: [sousedwestgallery](#)

sousedwest.co.uk



DISTRIBUTOR OF EVOLVER MAGAZINE

((acoustic))
DISTRIBUTION



Printed Marketing Distribution Solutions
throughout the South West

Phone: 01202 000133 Mobile: 07397 853006

Email: info@acousticdistribution.co.uk

Website: www.acousticdistribution.co.uk



THE STORY WITHIN : ABSTRACT ART TO FIRE YOUR IMAGINATION

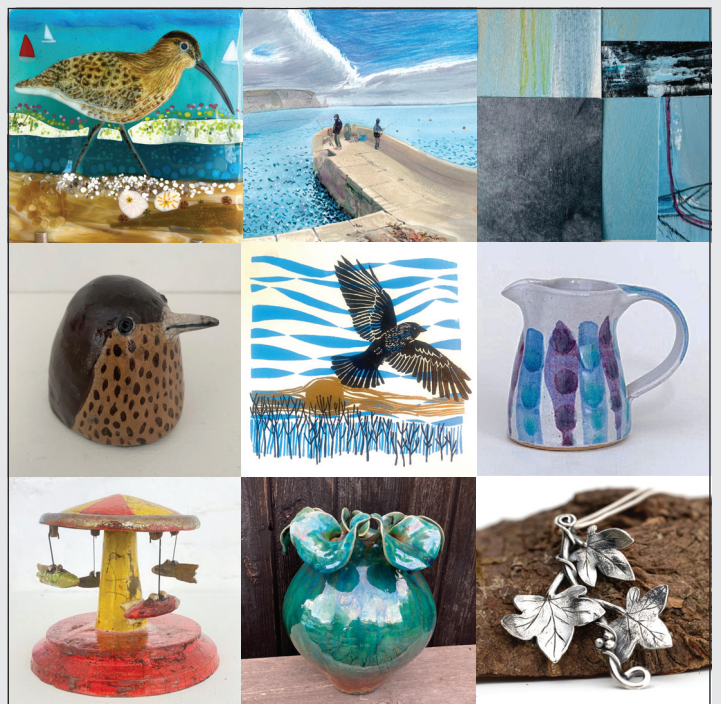


MAL LEE



RICHARD AMES
LITTLEWINGSTUDIO.CO.UK

THE GALLERY, SHAFESBURY ART CENTRE,
BELL STREET, SHAFESBURY SP7 8AR
SHAFESBURYARTSCENTRE.ORG.UK
OPEN 11.00AM TO 5.00PM
9TH JULY TO 15TH JULY



Boilerhouse Gallery

Contemporary Art and Craft
in the heart of Purbeck

Open Wednesday to Sunday 10am - 5pm

Sandy Hill Lane, Corfe Castle BH20 5JF

07398 052489 • boilerhousegallery.co.uk



Visual Arts

ELISABETH FRINK: 'A VIEW FROM WITHIN'

Until 28 September
The Salisbury Museum, The Kings House, 65 The Close, SALISBURY, SP1 2EN. 10am - 5pm. 01722 332151 / salisburymuseum.org.uk. *"The artistic and personal life of esteemed sculptor and artist Dame Elisabeth Frink are featured in this major exhibition. Sculptures, drawings and original prints explore the artistic processes and influences that shaped her life and work."*

DANA AWARTANI: 'STANDING BY THE RUINS'

Until 28 September
Arnolfini, 16 Narrow Quay, BRISTOL, BS1 4QA. Tuesday - Sunday 11am - 6pm. 0117 917 2300 / arnolfini.org.uk. *"Multidisciplinary artist Dana Awartani explores cultural heritage, loss and healing, using traditional crafts and collaborative practice to bridge the ancient and contemporary world."*

SAHARA LONGE: 'THE OTHER SIDE OF THE MOUNTAIN'

Until 28 September
Arnolfini, 16 Narrow Quay, BRISTOL, BS1 4QA. Tuesday - Sunday 11am - 6pm. 0117 917 2300 / arnolfini.org.uk. *"British artist Sahara Longe captures the fleeting moments of life, employing literary and cinematic devices to create a space where our past, present and future selves can coexist and converse."*

'COASTAL THREADS'

Until 31 October
Fairlynch Museum, 27 Fore Street, BUDLEIGH SALTERTON, EX9 6NP. Tuesday - Sunday 2 - 4.30pm. £2.50. 07887 459672. *"Fabric pictures."*

'WE ALL SEE THINGS DIFFERENTLY'

2 - 8 July
Sou'-Sou'-West Gallery, Manor Yard, Symondsbur Estate, SYMONDSBURY, Bridport, DT6 6HG. 10.30am - 4.30pm. 01308 301326 / sousouwest.co.uk. *"Sarah Jane Ross brings together artwork created by local care home residents."*



DESIGN FOR 'HONEYSUCKLE' (© The William Morris Society)

May Morris: Art & Advocacy

"This beautiful exhibition explores the wide-ranging talents and accomplishments of May Morris, the younger daughter of Arts & Crafts designer, William Morris. *May Morris: Art & Advocacy* explores May's exceptional designs for Morris & Co, her expertise in decorative needlework, her significant position within the public sphere, and her pivotal role in co-founding the Women's Guild of Arts."

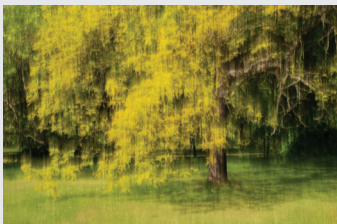
Until 5 October: Russell-Cotes Art Gallery & Museum, East Cliff, BOURNEMOUTH, BH1 3AA. Tuesday - Sunday 10am - 5pm. £9.50 / £5. 01202 128000 / russellcotes.com.

'KINDRED IN BLOOM AND FROST'

2 - 20 July
Walford Mill, Knobcrook Road, WIMBORNE, BH21 1NL. Wednesday - Saturday 10am - 5pm, Sunday 11am - 4pm. 01202 841400 / walfordmillcrafts.co.uk. *"Sisters Caroline Parrott and Melanie Pownall have been inspired by the four seasons to create costumes, sculpture, jewellery, and illustrations."*

AJAMU X: 'FIERCE: BRISTOL'

3 July - 21 September
Martin Parr Foundation, 316 Paintworks, BRISTOL, BS4 3AR. Thursday - Sunday 10am - 5pm. martinparrfoundation.org. *"Ten new portraits that both celebrate and map the contributions of black lesbian, gay, bisexual, trans, and queer individuals - often overlooked within mainstream narratives."*



'EPHEMERAL LANDSCAPES'

4 - 6 July
Hours, 10 Colston Yard, BRISTOL, BS1 5BD. 11am - 5pm. 07766 054659 / hours-space.com. Friday 6 - 9pm, Saturday and Sunday 11am - 5pm. 07766 054659 / hours-space.com. *"Photographers Becca Luger (above) and Rae Hadley celebrate nature in all of its forms."*

BULL MILL STUDIO 'FIRST SATURDAY'

5 July
Bull Mill Studio, Bull Lane, CROCKERTON, Warminster, BA12 8AY. 10am - 5pm. 07730 400784. nickandrew.co.uk / tanyahinton.co.uk. *"Monthly open studio exhibition featuring contemporary landscape paintings and drawings by Nick Andrew, wildlife art on reclaimed wood by Tanya Hinton, jewellery by Stephanie Gilbert, and baskets by Maria Monteiro."*

Kit Glaisyer

The Cinematic Landscape

Kit Glaisyer Fine Art

11 Downes Street, Bridport, Dorset DT6 3JR

kitglaisyer.com

Open Saturdays 10am to 3pm & by Appointment 07983 465789

Visual Arts

'PRESSED PERSPECTIVES'

5 - 9 July

Centrespace, 6 Leonard Lane, BRISTOL, BS1 1EA. 07718 944769. "A showcase of Bristol's emerging printmakers, pushing the boundaries of the medium."

ARTHAUS

5 - 13 July

Junefield, GREAT ELM, Frome, BA11 3NY. 11am - 5pm. 01373 811366 / lynn timer baxter artist.co.uk. "Sculpture, ceramics, paintings, and collage by Brian Baxter, Clare Delune, and Lynn Baxter."

ARTIST COLLECTIVE

5 - 13 July

Kennaway House, SIDMOUTH, EX10 8NG. 10am - 4pm. £1. 07895 117438 / artistcollective.uk. "Unusual and eclectic exhibition by eight artists exhibiting a diversity of mediums and styles."



'WANT BETTER NOT MORE'

5 July - 2 August

Antitaupe, 41 High Street, BRUTON, BA10 0AW. Thursday - Sunday 11am - 4pm. 07971 992258 / antitaupe.co.uk. "Anthony Burrill's brand new collaboration with People Will Always Need Plates features homewares in bone china and textile, plus limited-edition prints."

'LINGER'

5 July - 30 August

Exeter Phoenix, Gandy Street, EXETER, EX4 3LS. Monday - Saturday 10.30am - 5.30pm. 01392 667080 / exeterphoenix.org.uk. "This group exhibition by eight artists from Iceland and the UK focuses on art as a process and its inner logic to connect, not only to us, the viewer, but also to its surroundings. All eight artists share the belief that art is a finding place, not a hiding place, and whose works urge us to linger."



MOIRA LADD 'HEDGEROW HEAVEN' (Acrylic)

The Sherborne Open

"The annual Sherborne Open Art Exhibition is one of the region's most popular visual art events, showcasing a huge wealth of talent, with some 400 works on display. Independently judged, open to all and with no pre-selection, it displays rare spontaneity, freshness and diversity."

19 - 27 July: The Digby Hall, Hound Street, SHERBORNE, DT9 3AA. 10am - 5pm (27 July 10am - 1pm). 01935 816368 / sherbornearts.org.

'SKIN DEEP'

8 July - 31 August

RWA, Queen's Road, Clifton, BRISTOL, BS8 1PX. Tuesday - Sunday 10am - 5pm. 0117 973 5129 / rwa.org.uk. "Using the female body as protagonist and cipher, six artists tell stories both personal and universal using painting, drawing, video, performance, stitch and photography."

RICHARD AMES AND MAL LEE:

'THE STORY WITHIN'

9 - 15 July

The Gallery, Shaftesbury Arts Centre, Bell Street, SHAFTESBURY, SP7 8AR. Monday - Saturday 10am - 4pm. 01747 855243 / shaftesburyartscentre.org.uk. "Abstract art to fire your imagination. Paintings in oil and acrylic depicting travel and colour."

ANTHONY SULLY

11 - 18 July

Yelde Hall, The Shambles, CHIPPENHAM, SN15 3HL. 10.30am - 4.45pm. 07813 317707. "Exhibition celebrating six decades of designing, painting, and teaching."

'NATURAL HARMONIES'

11 - 30 July

Sou'-Sou'-West Gallery, Manor Yard, Symondsbur Estate, SYMONDSBURY, Bridport, DT6 6HG. 10.30am - 4.30pm. 01308 301326 / sousouwest.co.uk. "Printmaker Roger St Barbe joins ceramists David Pointer and Elaine King, united through inspiration in nature."

ZARA SAGANIC: 'PENNEED'

12 - 20 July

Sandy Hill Arts, Sandy Hill Lane, CORFE CASTLE, BH20 5JF. 10am - 4pm. 07929 771219 / sandyhillarts.co.uk. "Zara Saganic's work explores time, control, loss and the use of basic media that explores surface and process."

THG OPEN 2025

12 July - 23 August

Thelma Hulbert Gallery, Dowell Street, HONITON, EX14 1LX. Tuesday - Saturday 10am - 5pm. 01404 45006 / thelmahulbert.com. "The Open is a key part of THG's exhibition programme, showcasing the rich talent of both established and emerging contemporary visual artists living in the South West."

ANYA BEAUMONT: 'HOPEFUL

MONSTERS'

15 - 20 July

44AD Gallery, 4 Abbey Street, BATH, BA1 1NN. Monday - Saturday 12noon - 6pm, Sunday 1 - 4pm. 07787 561302 / anyabeaumont.com. "Exhibition of work reimagining plastic waste as both aesthetic and critique - highlighting the tensions between beauty and damage, nature and consumption."

JANE NORMAN: 'INTO THE BLUE'

16 - 22 July

The Gallery, Shaftesbury Arts Centre, Bell Street, SHAFTESBURY, SP7 8AR. Monday - Saturday 10am - 4pm. shaftesburyartscentre.org.uk.

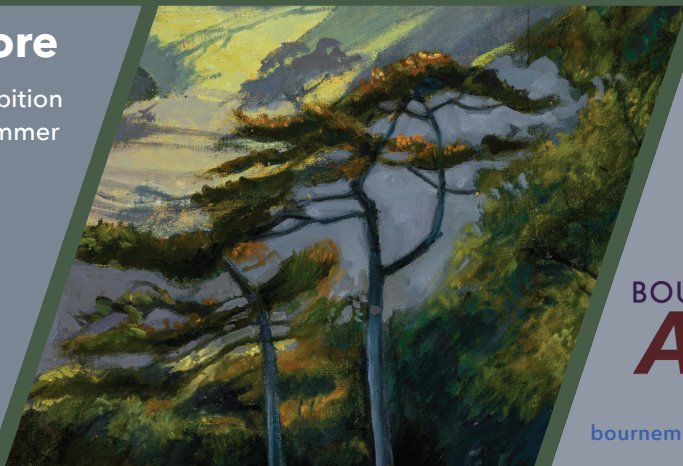
You need to get out more

Sketching days, artist-led workshops, exhibition visits, studio visits - not to mention our Summer Picnic and our famous Christmas Lunch - come and join us!

You don't need to apply for selection as a Full Member - Associate Members of the Bournemouth Arts Club are welcome at all our events.

Go on - get out. Find out more today.

Pam Marshall "Two Tall Trees" (oil)



BOURNEMOUTH
ARTS
CLUB

bournemouthartsclub.co.uk



STRANGE

CURATION BY
Leslie
Glenn Damhus

Andelli Art

**5-25
JULY
2025**

EXHIBITING ARTISTS:
Malcolm Ashman
Beth Carter
Dorcas Casey
Leslie Glenn Damhus
Joseph Dilnot
Helen Flockhart
Derrick Guild
Marie-Claire Hamon
Angela Lizon
Pinkie MacLure
Ian Middleton
Morwenna Morrison
Kim L Pace
Hamish Young
Pippa Young


Wednesday-Saturday
10am-5pm

www.andelliart.com



Discover

THE EXTRAORDINARY IMAGES
BY C E KILLE ON SHOW FOR
THE FIRST TIME IN 100 YEARS



THE FORGOTTEN PHOTOGRAPHER

TOWNSEND HOUSE, MINEHEAD • 26TH JULY-9TH AUGUST
10AM TO 3PM EVERY DAY & 6PM THURSDAYS • FREE ENTRY



ARTSOUNDLIVEARTFILM

b-side 2025

A vibrant Summer long celebration of culture on the captivating Isle of Portland. Join in an exciting programme of events in some incredible places.

DON'T MISS
The b-side BIG weekend!

11-14 September

Be a part of this unforgettable journey!

ONE ISLAND, 1000 STORIES
b-side.org.uk

b-side BIG Weekend presents

LUKE WRIGHT

Pub Grub

7.45pm Saturday 13 Sept
Royal Manor Theatre, Portland, Dorset

Tickets £15
ON SALE NOW

"A streetwise panache and a sardonic comic verve to rival Stewart Lee."
★★★★★ Telegraph

"A winning combination of honesty, humour, ire and wonder. He is at the peak of his powers." ★★★★★ The Stage

"Britain's finest performance poet." ★★★★★ Life As Theatre

b-side.org.uk






Supported using public funding by
ARTS COUNCIL ENGLAND





Visual Arts

'TAKE THREE ARTISTS'

16 - 29 July

The Gallery Upstairs, Upton Country Park, Poole Road, POOLE, BH17 7BJ. 10am - 5pm. 07973 241028 / artwey.co.uk. "Dorset artists Dianne Mary Alice, Elaine Harris and Debbie Leech display a wide variety of art."

YEOVIL CREATIVES: 'OUR TOWN'

16 July - 30 August

Yeovil Art Space, Unit 13 - 15, Vicarage Walk, Quedam Centre, YEOVIL, BA20 1EU. Wednesday - Friday 12noon - 4pm, Saturday 11am - 4pm. 07360 861358 / yeovilartspace.uk. "Exhibition of artworks from Yeovil Art Space's artist membership. Sculpture, paintings, photography, textiles and more."

'ART@EYPE'

18 - 20 July

Eype Centre for the Arts, St Peter's Church, Mount Lane, EYPE, Bridport, DT6 6AR. Friday and Saturday 10am - 5pm, Sunday 10am - 4pm. 07718 078453. Paintings by David Brooke, Pam Philip and Elizabeth Sporne, multimedia by Sally Davies and Nicola Dennis, ceramics by Carmen Burridge, sculpture by John Davey, and pyrography by Tilia Holmes.

'SUMMER EXHIBITION'

18 July - 5 September

Hatch Gallery, 7a Church Street, CHRISTCHURCH, BH23 1BW. Tuesday - Saturday 11am - 4pm. 07787 517958 / hatchgallery.co.uk. "Works by Nicky Chubb, Alex Poyner, Sarah Pye, Stephen Foster, and Martyn Brewster."

'SENSATIONS'

19 July - 10 August

Sou'-Sou'-West Gallery, Manor Yard, Symondsbur Estate, SYMONDSBURY, Bridport, DT6 6HG. 10.30am - 4.30pm. 01308 301326 / sousouwest.co.uk. "Open show accepting artwork of all shapes, sizes and medium. All work submitted is hung!"

CHRIS SINDEN & JACKI COX

22 July - 8 August

Ilminster Arts Centre, The Meeting House, East Street, ILMINSTER, TA19 0AN. Tuesday - Saturday 9.30am - 3pm. ilminsterartscentre.com.



RUBY KEARLE 'VEIL'

Young Photographers Showcase

"A celebration of creativity and perspective captured through the lens of young photographers. Whether using a phone, tablet, or DSLR, these talented individuals have documented the world around them in striking and thought-provoking ways. One outstanding image that celebrates the environment or addresses the impact of climate change will receive the Robert Richards Award, selected by our panel of judges."

1 - 29 August: The Engine Room, 52 High Street, BRIDGWATER, TA6 3BL. 10am - 3.30pm. 01278 433187 / somersetfilm.com

ANI OVERTON, JOANNE RUTTER, AND CAROLE WALLER

23 - 29 July

The Gallery, Shaftesbury Arts Centre, Bell Street, SHAFTESBURY, SP7 8AR. Monday - Saturday 10am - 4pm. shaftesburyartscentre.org.uk. Paintings, textiles and ceramics.



'TWO PATHS'

23 July - 3 August

Walford Mill, Knobcrook Road, WIMBORNE, BH21 1NL. Wednesday - Saturday 10am - 5pm, Sunday 11am - 4pm. 01202 841400 / walfordmillcrafts.co.uk. "Jason Pizzey (above) and Tom Marshall both work in painting, drawing and printmaking, but in very different ways and with contrasting results."

'LISOME RUM: TALES OF QUEER JOY'

23 July - 30 August

Bridport Arts Centre, 9 South Street, BRIDPORT, DT6 3NR. Tuesday - Saturday 10am - 4pm. 01308 424204 / bridport-arts.com. "Foyer exhibition by artist and archivist Paul Sammut."

'SYMBIOSIS'

24 July - 23 August

White Chalk Gallery, 5 Old Swan Yard, DEVIZES, SN10 1AT. Thursday - Saturday 10am - 5pm. 07398 970439 / whitechalkgallery.co.uk. "Artwork by Simon Parr and ceramics by Barry Stedman."



EVOLVER
magazine

Follow **evolvermagazine** on Instagram

EVOLVER magazine

FREE LISTINGS

Exhibition and performance listings should be emailed to **listings@evolver.org.uk**

Please send ALL information in the following order:

Event, date(s), venue, address (including postcode), times, admission fee (if any), contact number / website, up to 30 words about your event

Alice Kettle

Alice Kettle is a supreme colourist employing huge swathes of vibrant colour in her frequently large works. Her passion for and understanding of colour goes back to her days at Reading University studying painting where, amongst the visiting tutors, were Bert Irvin and Terry Frost.

Kettle's medium is stitch, and in her long career she has consistently challenged the art world's prejudices against textiles and fibre art. She has proved, through her own practice, and through her collaborations with other people, that working with stitch is not to be underestimated. She has subversively broken the glass ceiling that separates craft from art.

Kettle's work has not always been large. In her first year at Reading, in the vanguard of abstract expressionism, students were encouraged to make huge gestural marks. But for her that didn't feel quite right, she sensed that she didn't want to be only a painter. She took a year out following a traumatic family tragedy and on her return started working small and figuratively, later turning to textiles. The figures have stayed with her but she has returned to the monumental size.

Working in stitch using sewing machines, taking tiny steps in thread, it seems impossible that the resulting works are so large and so free. She works blind, and upside down, stitching on the back of the fabric, checking as she goes to see how it is looking. It is a leap of faith. She will ruthlessly cut away sections that she is not happy with and collage new pieces of fabric in their place. Light is crucial and changing the direction of the stitched line changes the hue as the light catches the texture of the thread. "It is all about the quality of line, the speed, the relationship of the top and bottom thread." She often uses different thicknesses of thread in the needle and bobbin.

The movement of the fabric at different speeds under the needle, which she describes as being "like a fixed pencil", creates different densities of colour. She has around five different machines and she moves from older analogue sewing machines to the most advanced digital technology. And she sits and sews with a needle and thread.

One of the most profound influences on Alice Kettle's life was her mother, who challenged the norms of what women were supposed to do and be in the mid 20th century. She was a deeply cultured



Alice Kettle with 'KINGMAKERS' (Thread on linen, 170 x 135 cm, 2025)

woman who revelled in colour, painting and wallpapering the walls of their house in vibrant oranges, making clothes for her children and taking them to museums and art galleries. A visit to a Barbara Hepworth exhibition in Winchester still stays with Kettle and continues to affect her personal aesthetic.

There is a canon associated with embroidery, tapestry, and ecclesiastical hangings, but it is not weighed down by art history. Stitch is a universal medium and has a universal language, like music and dance, which is not dependent on speech. Narrative is a particularly important aspect of Alice's work. She has always looked at myths and fairy tales to feed her interest in story telling and more recent work has dipped into contemporary events. She believes passionately in "changing the narrative

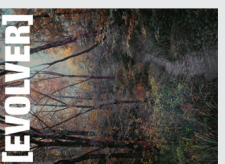
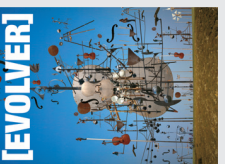
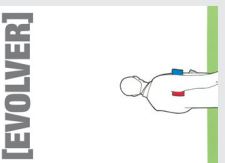
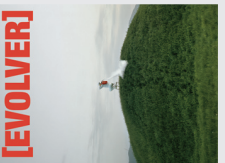
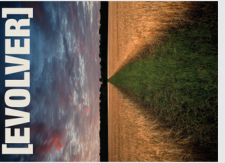
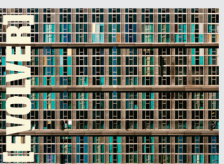
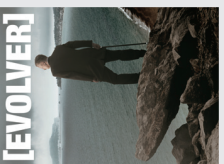
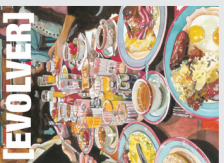
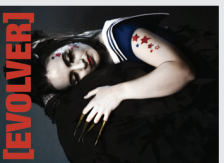
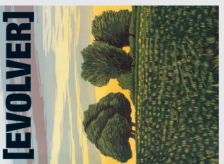
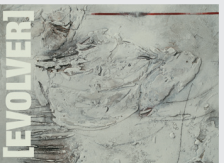
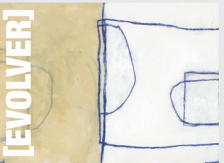
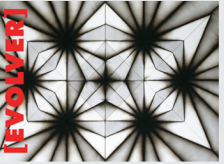
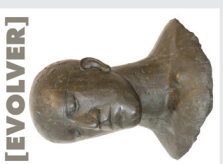
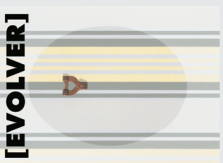
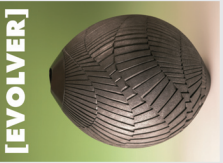
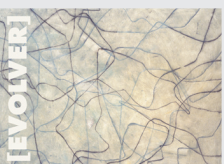
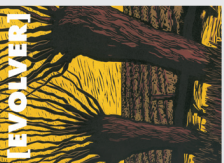
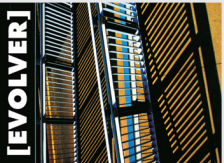
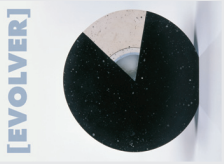
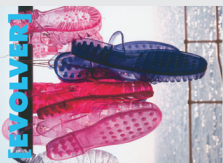
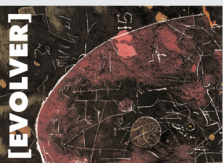
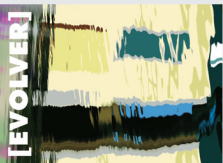
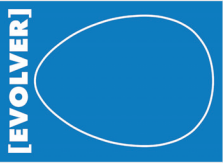
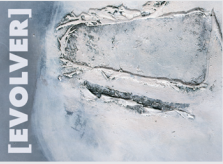
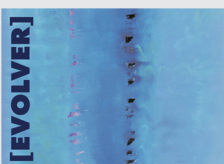
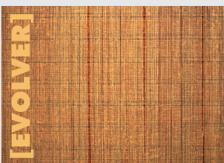
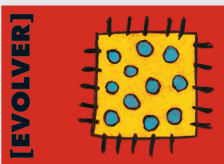
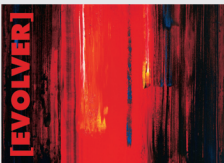
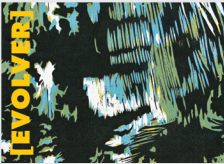
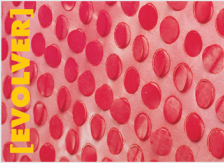
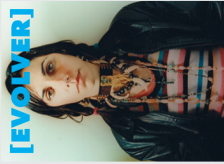
through thread". She has worked extensively with refugees and marginalised groups, drawing out their stories and helping them to come to terms with their traumas and tragedies. She sees stitch as a way for people to grow and repair and express themselves. She is fascinated in the dynamic that emerges when people work together. There is often a tension, "its messy but out of that mess comes a new version of something".

Fiona Robinson

'SOFT POWER' Until 10 August

RWA, Queen's Road, Clifton, BRISTOL, BS8 1PX. Tuesday - Sunday 10am - 5pm.
£9.90 / £5.45. 0117 973 5129 / rwa.org.uk.

Photograph by Jesse Wild







CHARLOTTE HODES 'CONVERSATIONS EN PLEIN AIR' (Hand-cut enamel transfers on china tableware, detail, 2024)

Recurring Intricacies

"Complimenting and celebrating the extraordinary interiors of the newly restored Grade 1 listed Georgian townhouse, The Sherborne, *Recurring Intricacies* brings together photography, ceramics, papercuts and sculpture made by three female artists: Helen Sear, Charlotte Hodes and Amanda Benson. The exhibition takes visitors on a journey through the 'recurring intricacies' of the eighteenth century, celebrating Sherborne House's fascinating, colourful, cultural and theatrical past. The Sherborne opened its doors in May 2024 after a meticulous restoration programme. To complement and celebrate the lavishly decorative interiors of this extraordinary philanthropy project, the Sherborne has programmed a series of artistic interventions. This time, it is focusing on women artists who are fascinated by craft. Each artist creates artworks that activate and elicit a range of feelings through our habits of looking."

Until 7 September: The Sherborne, Newlands, SHERBORNE, DT9 3JG. Monday - Saturday 10am - 4pm, Sunday 10am - 4pm. thesherborne.uk.

POUND ARTS OPEN
24 July - 25 August
Pound Arts, Pound Pill, CORSHAM, SN13 9HX. Monday - Saturday 10am - 9.30pm. 01249 70162. "An exciting chance for both amateur and professional artists to have their work displayed in the Pound Arts gallery."

KIMBERLEY DAY
25 July - 1 August
Sandy Hill Arts, Sandy Hill Lane, CORFE CASTLE, BH20 5JF. 10am - 4pm. 07929 771219 / sandyhillarts.co.uk. "Large and small scale 'emotional' landscape paintings."

HAMISH YOUNG: 'FIELD'
25 July - 24 August
Black Swan Arts, 2 Bridge Street, FROME, BA11 1BB. Monday - Sunday 10am - 4pm. 01373 473980 / blackswanarts.org.uk. "Crafted from 28,000 hand-cast plaster shells, each individually moulded from shells

gathered along the stunning southwest coastline, 'Field' is a tribute to Frome's residents. Every shell symbolises one of the 28,000 individuals who call this beautiful town their home."

DORSET 20:20 ART SOCIETY
26 July - 2 August
Church House, High Street, WIMBORNE, BH21 1HT. 10am - 5pm. 07530 685054 / dorset2020.org. Paintings.

THE LEMON TIMERS: 'OUT OF LINE'
26 July - 23 August
Fisherton Mill, 108 Fisherton Street, SALISBURY, SP2 7QY. Monday - Saturday 9.30am - 5pm. fishertonmill.co.uk. Paintings, mixed media, pottery and print.



'REGGAE BRIDPORT'
26 July - 16 September
Bridport Arts Centre, 9 South Street, BRIDPORT, DT6 3NR. Tuesday - Saturday 10am - 4pm. bridport-arts.com. "Exhibition of photographs by Adrian Boot exploring the world of reggae - from its origins, through its evolution to its icons."

'MUCHELNEY POTTERY: CELEBRATING 60 YEARS'
26 July - 25 October
Machelney Pottery, MUCHELNEY, near Langport, TA10 0DW. Monday - Saturday 10am - 1pm and 2 - 4pm. johnleachpottery.co.uk. "Commemorative exhibition celebrating 60 years. Pots by John Leach, Mark Melbourne and Nick Rees, as well as kitchenware pieces straight from the kiln!"



Exhibit A

Artists and photographers are invited to submit work for next issue's page 3 Exhibit A by emailing images to: simon@evolver.org.uk



EVOLVER
magazine

See our website at evolver.org.uk

EVOLVER MAGAZINE

20
25

25 YEARS

EVENT

14 September

CONVERSATIONS

PENNIE ELFICK
TONY MARTIN

19th July to 23rd August

Over two floors of the gallery this significant show seeks to explore the conversations that the artists share whilst investigating abstraction. Works inspired by nature, observation and the contemplative cells in San Marco, Florence.



www.thesladecentre.com for opening times



Flight to Adès Fernando Velazquez

Tuesday 8 July - Friday 19 September
The Corn Exchange Gallery, Dorchester

For Flight to Adès, Spanish artist Fernando Velazquez has drawn deep inspiration from the music of British composer Thomas Adès. In this series, Velazquez captures the ephemeral beauty found in the complexities of sound and a timeless use of light and dark on canvas, offering a space where the viewer can reflect, dream, and experience a profound sense of transcendence. Through the interplay of form, movement, and atmosphere, Flight to Adès invites us to enter a new territory where the echoes of the past merge with a new language in painting.

DorchesterArts

01305 266926 | dorchesterarts.org.uk



Gerry Dudgeon - Melpash Meadows



FRAME - PRINT - GALLERY

Come and see us in our new
Beaminster Gallery



Fine Art Printing
Colour Managed Art
Copying
Bespoke Framers
Conservation Standards
Expert Advice
Gallery



CREWKERNE
Unit 3
20 Market Street
Somerset TA18 7LA
01460 497589
info@artandbeyondprinting.co.uk

BEAMINSTER
1 Lynden Way
Dorset DT8 3AX
01308 800693
info@artandbeyond.co.uk

The Sherborne Open Art Exhibition 2025

SAT 19TH - SUN 27TH JULY 10AM - 5PM

THE DIGBY HALL, HOUND ST, SHERBORNE, DT9 3AA

ADMISSION FREE

Anita Toscani - 'Ora'



Sherborne *Arts* SHERBORNE ART CLUB



WWW.SHERBORNEARTS.ORG

SHERBORNEOPEN@SHERBORNEARTS.ORG



confluence

Nick Andrew plein air drawings- South Wiltshire's
five chalk rivers- sources, tributaries, confluences

Fisherton Mill 108 Fisherton Street, Salisbury SP2 7QY

Sat 30 Aug - Sat 27 Sept. Mon- Fri 9.30- 5 / Sat 9.30- 5.30

Sun closed. Tel: 01722 415121 (FM) / 07730 400784 (NA)

www.nickandrewdrawingprojects.wordpress.com

www.nickandrew.co.uk www.fishertonmill.co.uk



BRUTON ART SOCIETY

72nd Annual Exhibition



Unexpected Joy - Vanessa Fawcett

*Affordable Art from
the best
Regional Artists*

King's Bruton Memorial Hall

BRUTON

Somerset BA10 0ED

Sat 16 - Sat 23 August 2025

10am - 4pm daily

Free entry

Visual Arts

'CIRCLES, LANDSCAPES AND FUSIONS'

30 July - 12 August
The Gallery, Shaftesbury Arts Centre, Bell Street, SHAFTESBURY, SP7 8AR. Monday - Saturday 10am - 4pm. shaftesburyartscentre.org.uk. "Three Dorset artists show lino cuts, wall hangings, paintings and fused glass pieces."

DACA SHOWCASE 2025
1 - 5 August

The Purbeck School, Worgret Road, WAREHAM, BH20 4PF. 10am - 4pm. £6 / £5 / £3 / £2.50. 01202 394101 / dorsetartsandcrafts.org. "The premier arts, craft and photography event in Dorset. A great day out for the whole family, including children's workshops. Lots of fantastic items both to admire and purchase."

RUSSELL COULSON
1 - 18 August

Sou'-Sou'-West Gallery, Manor Yard, Symondsbury Estate, SYMONDSBURY, Bridport, DT6 6HG. 10.30am - 4.30pm. 01308 301326. Drawings, paintings and illustrations.

'SYMBIOSIS: LIQUID'
1 - 29 August

Bristol Folk House, 40a Park Street, BRISTOL, BS1 5JG. Monday - Friday 9am - 4pm. 0117 926 2987 / londonaltphoto.com. "Liquid examines liquid as both subject matter and process relating to ecology and alternative photography processes."

BULL MILL STUDIO 'FIRST SATURDAY'
2 August

Bull Mill Studio, Bull Lane, CROCKERTON, Warminster, BA12 8AY. 10am - 5pm. 07730 400784. nickandrew.co.uk. See 5 July.

SALISBURY GROUP OF ARTISTS
2 - 29 August

Community Gallery, Salisbury Central Library, Market Walk, SALISBURY, SP1 1BL. Monday - Saturday 10am - 4pm. 07414 827113 / salisburygroupofartists.co.uk. "Paintings, mixed media, ceramics, glass art, textiles, sculpture and photography."



LUKE HOLCOMBE

The Great Outdoors

"A vibrant and inspiring mixed show featuring both local and national artists and makers. Come and see ceramics, metal, wood, glass, prints and more, all taking their inspiration from the great outdoors."

6 - 31 August: Walford Mill, Knobcrook Road, WIMBORNE, BH21 1NL. Wednesday - Saturday 10am - 5pm, Sunday 11am - 4pm. 01202 841400 / walfordmillcrafts.co.uk.

SUSAN COX
12 - 19 August

Sandy Hill Arts, Sandy Hill Lane, CORFE CASTLE, BH20 5JF. 10am - 4pm. sandyhillarts.co.uk. "Intriguing figures in imaginary landscapes."

'WORKSHOPS SHOWCASE'
12 August - 5 September

Ilminster Arts Centre, The Meeting House, East Street, ILMINSTER, TA19 0AN. Tuesday - Saturday 9.30am - 3pm. ilminsterartscentre.com.

MIKE NUTH
13 - 19 August

The Gallery, Shaftesbury Arts Centre, Bell Street, SHAFTESBURY, SP7 8AR. Monday - Saturday 10am - 4pm. shaftesburyartscentre.org.uk.

BRUTON ART SOCIETY
16 - 23 August

Memorial Hall, King's Bruton, BRUTON, BA10 0ED. 10am - 4pm. 01963 370020 / brutonartsociety.co.uk. "Affordable art from the best regional artists, on display in a wonderful hall with natural light, wood panelling, high ceilings, and Gothic windows."

ANDY ROLLO
16 - 31 August

Sou'-Sou'-West Gallery, Manor Yard, Symondsbury Estate, SYMONDSBURY, Bridport, DT6 6HG. 10.30am - 4.30pm. 01308 301326 / sousouwest.co.uk. "Annual solo show featuring immersive paintings, drawings and mixed media."

'WHERE JOY BEGINS'
20 - 26 August

The Gallery, Shaftesbury Arts Centre, Bell Street, SHAFTESBURY, SP7 8AR. Monday - Saturday 10am - 4pm. shaftesburyartscentre.org.uk. "Helen Baddely, Sofie Page, Camilla Bajorat, and Anna Jackson express their joy of creation through their art."

'MAKE IT SUMMER 25'
20 August - 14 September

Sou'-Sou'-West Gallery, Manor Yard, Symondsbury Estate, SYMONDSBURY, Bridport, DT6 6HG. 10.30am - 4.30pm. 01308 301326 / sousouwest.co.uk. "A summer pop-up for local creatives featuring a wide variety of work by local makers."

SHERBORNE
TIMES

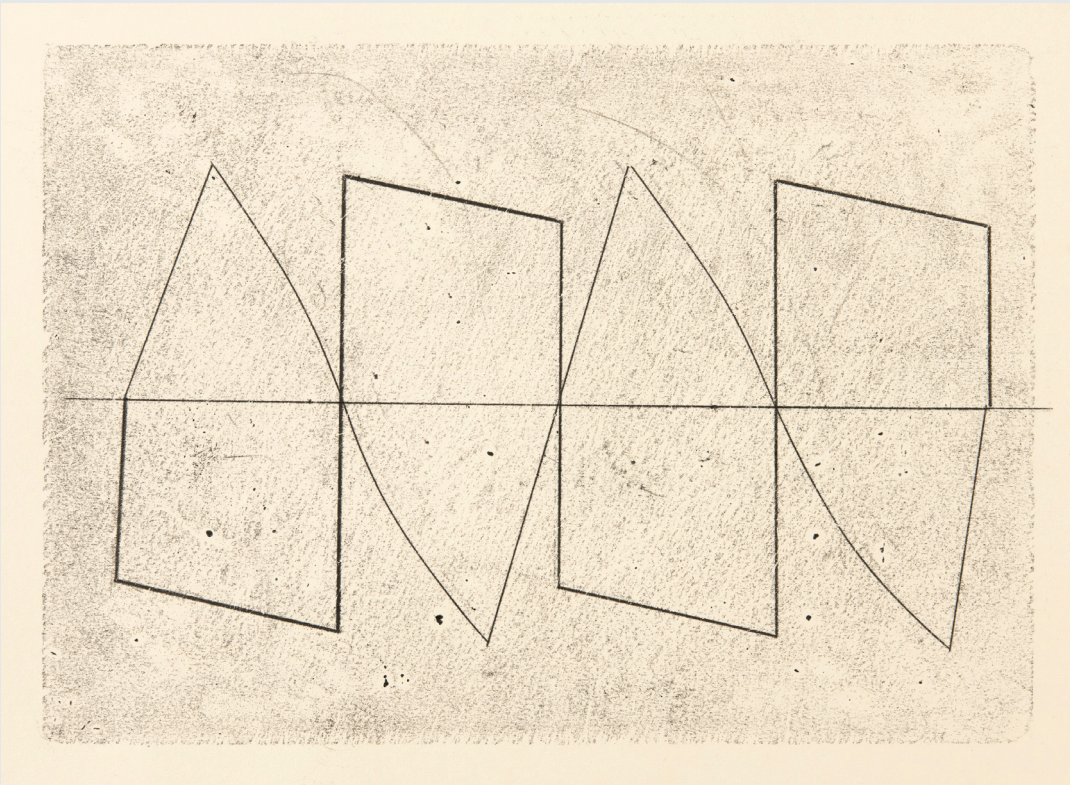
A MONTHLY CELEBRATION OF PEOPLE, PLACE AND PURVEYOR

OUT NOW
AND ONLINE

sherbornetimes.co.uk



Artist at Work No.79:
The Faroe's Secrets by Stella Bawden Hollis



TONY MARTIN 'MONOTYPE' (30 x 42 cm)

Pennie Elfick and Tony Martin: Conversations

"Over two floors of the gallery this significant show seeks to explore the conversations that the artists share whilst investigating abstraction. Works inspired by nature, observation and the contemplative cells in San Marco, Florence."

19 July - 23 August: The Slade Centre, GILLINGHAM, SP8 4AY. Tuesday - Friday 9.30am - 4pm, Saturday 9.30am - 2pm. thesladecentre.com.

CHILD OKEFORD ART TRAIL
22 - 25 August
CHILD OKEFORD, DT11 8EX. 11am - 4pm. 07749 486733 "Showcase of work by 22 local artists at four venues. An easy-to-follow trail through this picturesque North Dorset village."

ROBERT AMESBURY BROOKS
23 - 31 August
Sandy Hill Arts, Sandy Hill Lane, CORFE CASTLE, BH20 5JF. 10am -

4pm. sandyhillarts.co.uk. "Paintings inspired by Corfe Castle and the Purbeck landscape."

'IMAGINATION UNLOCKED 6'
23 - 31 August
Eype Centre for the Arts, St. Peter's Church, Mount Lane, EYPE, near Bridport, DT6 6AR. 10am - 4.30pm. eypechurcharts.co.uk. "Recent paintings by David Brooke, Caroline Ireland, and Elaine Dixon. Unique artworks to spark ideas."

'WARPED AND WASTED'
23 August - 11 October
ACE Arts, Market Place, SOMERTON, TA11 7NB. Tuesday 11am - 5pm, Wednesday - Saturday 10am - 5pm. 01458 273008 / acearts.co.uk. "Through research, design and production, the members of Seam Collective unveil visionary ideas for the future, inviting visitors to immerse themselves in their diverse approaches to making."

MALAK MATTAR: 'SURVIVING GAZA'
25 - 30 August
Loving by Nature, Unit 10, Antelope Walk, DORCHESTER, DT1 1BE. Monday 10am - 2pm, Tuesday - Saturday 10am - 4pm. 07775 601210. "From vibrant early works to her haunting recent series documenting genocide, Mattar's art serves as both cultural preservation and resistance, bearing witness to Palestinian resilience and survival."

'TAKE 3 ARTISTS'
27 August - 9 September
The Gallery, Shaftesbury Arts Centre, Bell Street, SHAFESBURY, SP7 8AR. Monday - Saturday 10am - 4pm. 01747 855243 / shaftesburyartscentre.org.uk. "Exciting mix of work by Joan Scott, Barbara Davis, and Dick Hewitson."

FRANCES HATCH: 'ELEMENTS'
28 August - 20 September
White Chalk Gallery, 5 Old Swan Yard, DEVIZES, SN10 1AT. Thursday - Saturday 10am - 5pm. 07398 970439 / whitechalkgallery.co.uk. "Frances responds to the landscape she visits, inviting it to participate in a conversation with the blank page in front of her."

JACK ARCHER: 'A LIFE IN INK'
29 August - 14 September
Pound Arts, Pound Pill, CORSHAM, SN13 9HX. Monday - Saturday 10am - 9.30pm. 01249 701628 / poundarts.org.uk. "Jack's artistic journey began in the 1950s as a technical illustrator on prestigious projects. This show includes working drawings, prints and paintings that reflect Jack's love of design and history."

NICK ANDREW: 'CONFLUENCE'
30 August - 27 September
Fisherton Mill, 108 Fisherton Street, SALISBURY, SP2 7QY. Monday - Saturday 9.30am - 5pm. 01722 500200 / fishertonmill.co.uk. "Exhibition of Nick Andrew's plein air drawing project, exploring the sources, tributaries and confluences of the five rivers that have shaped the landscape of South Wiltshire."



OUR TOWN
Yeovil Creatives
Annual Exhibition
16 July - 30 August 2025

Opening Times: Wed - Fri, 12-4, Sat, 11-4
yeovilartspace.uk/yeovilcreatives



Music

July and August 2025



DORCHESTER PIANO QUARTET
2 July
The Corn Exchange, High East Street, DORCHESTER, DT1 1HF. 11.30am. Free entry. 01305 266926 / dorchesterarts.org.uk.

ARMONICO CONSORT: 'RACHMININOV VESPERS'
3 July
Lighthouse, 21 Kingland Road, POOLE, BH15 1UG. 7pm. 01202 280000 / lighthousepoole.co.uk.

JOHN LAW'S RE-CREATIONS
4 July
Bridport Arts Centre, 9 South Street, BRIDPORT, DT6 3NR. 8pm. £18 / £16 / £7. 01308 424204 / bridport-arts.com. "Well-known tunes from the worlds of jazz, pop and classical."

SEMLEY MUSIC FESTIVAL
4 and 5 July
Church Green, SEMLEY, Shaftesbury, SP7 9AS. Friday 7pm, Saturday 12 noon. semleymusicfestival.org. "Great live music from across the globe, delicious food free workshops and activities, and a welcoming atmosphere."



THE SALTS
5 July
Lighthouse, 21 Kingland Road, POOLE, BH15 1UG. 8pm. 01202 280000. "Sea shanties, songs from the sea, celebrating maritime classics that we all know and love."



SPOOKY MEN'S CHORALE

Lyme Folk Weekend

"The amazing Spooky Men's Chorale will be making the trip all the way from Australia to headline this year's Lyme Folk Weekend, the festival that traditionally marks the finale of the summer season. The group, from New South Wales, have become rock-solid festival and theatre favourites in Australia, UK and Europe, with seven albums and 900 gigs under their belts. They will appear at Lyme Regis's Marine Theatre on Sunday 31st August, bringing the curtain down on the late summer folk festival. Opening the weekend on Friday 29th August will be Turin Brakes, 10 years after their last visit to Lyme Folk Weekend. The band return with their highly-acclaimed stripped back to basics acoustic show which has been playing to sellout audiences around the country since the autumn. And in between, festival patrons and Dorset favourites Ninebarrow return on Saturday 30th August with their latest one-off *Ninebarrow & Friends* show. Lyme Folk Weekend is in its 13th year, and is a celebration that includes free music and dancing, ceilidh, workshops and sessions on the seafront and in local venues, along with the three headline concerts in the Marine Theatre."

29 - 31 August: Various locations, LYME REGIS, Dorset. lymefolk.com.



AXE & TRAP STUDIOS IS A RECORDING FACILITY SITUATED AT THE FOOT OF THE MENDIP HILLS IN WELLS, SOMERSET.

Three performance spaces, 24 channel Trident console, extensive analogue outboard and much more.

Take a tour at
AXEANDTRAPSTUDIOS.COM



THE RHYNES

Blackberry Wood + The Rhynes

"Blackberry Wood will whisk you away to a wild place full of debaucherous music, magic and dancing, with hypnotic story-telling and mesmerising ballads adding enchanting moments to their shows. The Rhynes play songs about love, life and nostalgia, with chiming guitars, pianos, Hammond and rich vocal harmonies. Think Teenage Fanclub for the guitars and harmonies, Nicky Hopkins for the Stones pianos and a touch of Dylan for the harmonicas."

4 July: The King Arthur, 31 - 33 Benedict Street, GLASTONBURY, BA6 9NB. 7.30pm. £12. thekingarthurglastonbury.com.

THE DYLAN ROSS JAZZ COLLECTIVE

5 July
Sandy Hill Arts, Sandy Hill Lane, CORFE CASTLE, BH20 5JF. 2pm. £12. sandyhillarts.co.uk.

GUILDHALL YOUNG ARTISTS

5 July
Willow Green, Richard Huish College, South Road, TAUNTON, TA1 3DZ. 2pm. gyataunton.org.uk.

THE BOOKSHOP BAND

5 July
The Pound Arts Centre, Pound Pill, CORSHAM, SN13 9HX. 7.30pm. £15. 01249 701628 / poundarts.org.uk.



'MUSICKE IN THE AYRE: PIETY AND PLAY IN VERSAILLES'

9 July
Silk Mill Gallery, Merchants Barton, FROME, BA11 1PT. 6pm. £15. 07747 803494. "Enchanting French Baroque music."

IZZIE YARDLEY

10 July
St Philip & St James Church, Vicarage Lane, NORTON ST PHILIP, Bath, BA2 7LY. 1pm. £10. 01373 834488 / hardingtonvale.org.uk. "Singer, lyricist and multi-instrumentalist Izzie draws on folk, jazz and classical for her songwriting and performing."

LOUISE JORDAN: 'HER STORIES'

10 July
Lighthouse, 21 Kingland Road, POOLE, BH15 1UG. 8pm. £12.02 280000 / lighthousepoole.co.uk.

MARLENE HILL AND THE SUNSET CAFÉ BAND

10 July
The Corn Exchange, High East Street, DORCHESTER, DT1 1HF. 7.30pm. £20 / £18. 01305 266926 / dorchesterarts.org.uk.

'MONEY FOR NOTHING'

10 July
Salisbury Playhouse, Malthouse Lane, SALISBURY, SP2 7RA. 7.30pm. £20. wiltshirecreative.co.uk. "Dire Straits covers."



COLIN SCOBIE AND JÂMS COLEMAN

11 July
Bridport Arts Centre, 9 South Street, BRIDPORT, DT6 3NR. 11.30am. £16 / £14 / £5. 01308 424204 / bridport-arts.com. "Violinist Scobie and pianist Coleman (above) perform Beethoven's Violin Sonata No 3 in E-flat major and Elgar's Violin Sonata in E minor."

COLIN SCOBIE AND JÂMS COLEMAN

11 July
Ilminster Arts Centre, The Meeting House, East Street, ILMINSTER, TA19 0AN. £20. 7.30pm. 01460 54973 / themeetinghouse.org.uk. See above.

'COUNTRY ROADS'

11 July
Salisbury Playhouse, Malthouse Lane, SALISBURY, SP2 7RA. 7.30pm. £20. 01722 320333 / wiltshirecreative.co.uk. "A celebration of country classics."

IYATRA QUARTET

11 July
Sandy Hill Arts, Sandy Hill Lane, CORFE CASTLE, BH20 5JF. 7pm. £15. 07929 771219 / sandyhillarts.co.uk. "Soaring strings and stunning harmonies."



i-nichi

SEPTEMBER 2025



i_nichi_theband



AT REDLANDS

REDLANDS YARD, BROADWINDSOR
BEAMINSTER, DT8 3PX
IAN@RECORDVAULT.CO.UK
07737 003891



@RECORDVAULTUK

ROCK • FUNK • SOUL • REGGAE • PROG • PUNK • SIXTIES • HEAVY METAL • JAZZ • CLASSICAL

South West's **NEWEST** record shop!

- Thousands of records in stock
- Loads of rare albums and singles
- CDs, books, accessories and gifts!

10% DISCOUNT
with this advert



Music

PILANI BUBU + HANNAH MOULE

11 July
The Artbank, 13 High Street,
SHEPTON MALLET, BA4 5AA. 7pm.
£12 / £6. pilanibubu.com.

'SOMERSTOCK'

11 and 12 July
Somerton Recreation Ground,
Gassons Lane, SOMERTON, TA11
6HW. Friday 4pm, Saturday 11am..
£35. somerstock.com. "Two-day
family-friendly music festival."

PRIDDY FOLK FESTIVAL

11 - 13 July
Priddy Green, PRIDDY, BA5 3BB.
07773 218388 / priddyfolk.org.

'BRITTEN WAR REQUIEM'

12 July
Lighthouse, 21 Kingland Road,
POOLE, BH15 1UG. 7.30pm. 01202
280000 / lighthousepoole.co.uk.

'THE SOUND OF THE STREETS'

13 July
Castle Green, TAUNTON, TA1 1JD.
11am. Free entry.
thesoundofthestreets.com. "A day of
musical joy with London's Kinetika
Bloco, street bands, The Sound of the
Streets band, young musicians,
ancient horns, drum groups, folk
fiddle, solo singers and more."

GEORGE MANN

13 July
The Ropemakers, 36 West Street,
BRIDPORT, DT6 3QP. 4pm. Free
entry. theropemakers.com.
"Acclaimed US singer-songwriter."

'QUEEN OF THE NIGHT'

18 July
Lighthouse, 21 Kingland Road,
POOLE, BH15 1UG. 7.30pm. 01202
280000 / lighthousepoole.co.uk.
"Whitney Houston covers."

THE SMYTHS

19 July
Lighthouse, 21 Kingland Road,
POOLE, BH15 1UG. 7.30pm. 01202
280000. "Smiths covers."

THOKOZILE AND THE BOSSA
DEFINITIVA TRIO

19 July
Sandy Hill Arts, Sandy Hill Lane,
CORFE CASTLE, BH20 5JF. 2pm. £18
/ 12. sandyhillarts.co.uk. "Joyous
world jazz sounds."



Taff Rapids

"Cardiff's bluegrass sensation is taking the international stage by storm, bringing a fresh perspective to the bluegrass genre by infusing traditional American classics and captivating originals with Welsh-language elements for a unique global appeal. With electrifying performances, rich harmonies, and unmatched instrumental prowess, Taff Rapids is set to become a powerhouse in bluegrass and beyond."

23 July: Village Hall, MILBORNE ST ANDREW, DT11 0JX. 7.30pm. £12.50 / £6. artsreach.co.uk.

24 July: Village Hall, HALSTOCK, BA22 9SG. 7.30pm. £12.50 / £6. artsreach.co.uk.

25 July: Village Hall, EAST STOUR, SP8 5JY. 7.30pm. £12.50 / £6. artsreach.co.uk.



IAGO BANET

24 July
The Corn Exchange, High East
Street, DORCHESTER, DT1 1HF.
7.30pm. £18 / £16. 01305 266926 /
dorchesterarts.org.uk.

ARCHIE RAY + BOUNDLESS
BROTHERS + MIA NICHOLLS

24 July
Lighthouse, 21 Kingland Road,
POOLE, BH15 1UG. 7.30pm. 01202
280000 / lighthousepoole.co.uk.

BOWIE FASHION

25 July
Ilminster Arts Centre, The Meeting
House, East Street, ILMINSTER, TA19
0AN. 7.30pm. £22. 01460 54973 /
themeetinghouse.org.uk. "David
Bowie covers."

CONCRETE PRAIRIE

25 July
The Ropemakers, 36 West Street,
BRIDPORT, DT6 3QP. 9pm. Free
entry. theropemakers.com.

CALL ME CEILIDH

26 July
East Quay, Harbour Road,
WATCHET, TA23 0AQ. 6pm. 01984
263103 / eastquaywatchet.co.uk.
"Genre-blending band fusing
traditional Scottish folk with modern
beats, featuring fun, easy-to-follow
group dances led by a caller."

EVOLVER MAGAZINE 25 YEARS
2025
EVENT
14 September

THE SOUND OF THE STREETS
FESTIVAL 2025

13TH JULY | 11AM - 4PM | TAUNTON

The Sound of the Streets Festival returns for 2025!

thesoundofthestreets.com

@thesoundofthestreets

Supported using public funding by
ARTS COUNCIL
ENGLAND

KS PS
ACTION TRAIL
TAUNTON TOWN COUNCIL

LYME FOLK
WEEKEND
29-31 AUGUST 2025

TURIN BRAKES
ACOUSTIC

Ninebarrow
& FRIENDS

Spooky
Men's Chorus

TICKETS

WWW.LYMEFOLK.COM



Julieta Iglesias

"Julieta Iglesias is a remarkable Argentine pianist and arranger. Classically trained, with a unique style which combines expression and virtuosity."
9 July: The Pound Arts Centre, Pound Pill, CORSHAM, SN13 9HX. 1pm. £8. 01249 701628 / poundarts.org.uk.

YOUTHSAYERS AND SOOTHSAYERS
26 July
Sandy Hill Arts, Sandy Hill Lane, CORFE CASTLE, BH20 5JF. 7pm. £12. sandyhillarts.co.uk. "Afrobeat, jazz and dub."

ALEX CLARK & THE CRAIG MILVERTON TRIO
1 August
Ilminster Arts Centre, The Meeting House, East Street, ILMINSTER, TA19 0AN. 7.30pm. £20. 01460 54973 / themeeetinghouse.org.uk. Jazz.

PUNK SOUL BROTHERS
1 August
The Ropemakers, 36 West Street, BRIDPORT, DT6 3QP. 9pm. Free entry. theropemakers.com.

'MUSICKE IN THE AYRE: PIETY AND PLAY IN VERSAILLES'
2 August
Iford Manor Gardens, near BRADFORD-ON-AVON, BA15 2BA. 2pm. 07747 803494 / ifordmanor.co.uk. See 9 July.

STEVE WHITE & THE PROTEST FAMILY
2 August
The Ropemakers, 36 West Street, BRIDPORT, DT6 3QP. 9pm. Free entry. theropemakers.com.

ODYSSEY
2 August
Key West, Pier Approach, BOURNEMOUTH, BH2 5AA. 7.30pm. £49.50. 01202 871497 / keywestbourneymouth.co.uk.

MATT PLESS
3 August
The Ropemakers, 36 West Street, BRIDPORT, DT6 3QP. 9pm. Free entry. 01308 421255 / theropemakers.com.

GLENN ROSS AND FRIENDS
7 August
Sandy Hill Arts, Sandy Hill Lane, CORFE CASTLE, BH20 5JF. 7pm. £12. 07929 771219 / sandyhillarts.co.uk.

NEGRA SANTA
8 August
The Ropemakers, 36 West Street, BRIDPORT, DT6 3QP. 9pm. Free entry. 01308 421255 / theropemakers.com.

NEGRA SANTA
9 August
113 - 117 Rampart Road, SALISBURY, SP1 1JA. 8pm. Free entry. 01722 503362 / thewinchestergate.com.

VOCES AMICI
15 August
Ilminster Arts Centre, The Meeting House, East Street, ILMINSTER, TA19 0AN. 7.30pm. £16. 01460 54973 / themeeetinghouse.org.uk. "Exciting vocal music."

THEO MIZU
15 August
The Ropemakers, 36 West Street, BRIDPORT, DT6 3QP. 9pm. Free entry. theropemakers.com.

SHIRLEY SMART AND THE BEZIQUE TRIO
23 August
Sandy Hill Arts, Sandy Hill Lane, CORFE CASTLE, BH20 5JF. 7pm. £18. 07929 771219 / sandyhillarts.co.uk. "Acoustic jazz."

RIBBLE RIBBLE
29 August
The Ropemakers, 36 West Street, BRIDPORT, DT6 3QP. 9pm. Free entry. theropemakers.com.



BETH ORTON
30 August
Sandy Hill Arts, Sandy Hill Lane, CORFE CASTLE, BH20 5JF. 7.30pm. £20. 07929 771219 / sandyhillarts.co.uk. "Fabulous melodies fusing folk with electronica."

WEST OF ENGLAND YOUTH ORCHESTRA
30 and 31 August
Wiltshire Music Centre, Ashley Road, BRADFORD-ON-AVON, BA15 1DZ. 3 and 7.30pm. £16 / £8. wiltshiremusic.org.uk.



Unit 10a, St Michael's Estate, St Michael's Lane,
Bridport, Dorset DT6 3RR
Monday to Saturday 10am - 4.30pm
clocktowermusic.co.uk



Suppliers of both new and pre-loved vinyl,
official t-shirts, merchandise and memorabilia
**THE OLD SHAMBLES, SOUTH STREET,
SHERBORNE, DT9 3LU**
07730 356719 / thebeatandtrack@icloud.com
thebeatandtrack.co.uk



Concerts IN THE West

– CELEBRATING 20 YEARS IN 2025 –

CHAMBER MUSIC MINI-TOURS

IN DORSET AND SOMERSET
BRIDPORT — CREWKERNE — ILMINSTER

- 14–15 FEBRUARY **ENSEMBLE HESPERI**
Magdalena Loth-Hill VIOLIN — Mary-Jannet Leith RECORDERS
Florence Petit CELLO — Thomas Allery HARPSICHORD
- 14–15 MARCH **ALASDAIR BEATSON** PIANO
- 11–12 APRIL **MIKELEIZ-ZUCCHI DUO**
David Zucchi SAXOPHONE
Iñigo Mikeleiz-Berrade ACCORDION
- 9–10 MAY **TRIO ANIMA**
Rosalind Ventris VIOLA — Anneke Hodnett HARP
Matthew Featherstone FLUTE
- 27–28 JUNE **DUO FABULAE**
Lorena Cantó VIOLA — Yvain Calvo PIANO
- 11–12 JULY **COLIN SCOBIE** VIOLIN & **JÂMS COLEMAN** PIANO
- 26–27 SEPTEMBER **MITSU TRIO**
Laura Custodio Sabas VIOLIN
Akito Goto CELLO — Tyler Hay PIANO
- 24–25 OCTOBER **VOICE**
Victoria Couper — Clemmie Franks — Emily Burn
- 28–29 NOVEMBER **CONSONE QUARTET**
Agata Daraškaite VIOLIN — Magdalena Loth-Hill VIOLIN
Elitsa Bogdanova VIOLA — George Ross CELLO

14 FEBRUARY — 29 NOVEMBER 2025
Online booking — www.concertsinthewest.org
concertsinthewest@gmail.com
www.concertsinthewest.org



PROMS

IN THE PARK 2025

Meyrick Park, Bournemouth

CLASSICAL EXTRAVAGANZA 2.0

Friday 8 August, 8pm
The best symphonic music in the world with stunning pyrotechnic and fireworks finale!
Superman March • Dance of the Hours • Polovtsian Dances and many more!

Symphonic SMASH HITS

Saturday 9 August, 8pm
Celebrating the era of new romantics, big hair and even bigger shoulder pads with the BSO and 4 West End singers!
**Eurythmics – Sweet Dreams
David Bowie Medley • A-Ha Medley • and many more!**

bsolive.com
01202 669925



InsideOut

DORSET

Family-Friendly Arts Festival

12–21 September 2025

Extraordinary Events in Extraordinary Places

 [insideoutdorset](https://www.facebook.com/insideoutdorset)

 [#IODE2025](https://www.instagram.com/activate_parts)

insideoutdorset.co.uk



FREE
EVENTS



Supported using public funding by
ARTS COUNCIL ENGLAND

Performance

July and August 2025



A Midsummer Night's Dream

"The Three Inch Fools are back with Shakespeare's most iconic comedy. It's Midsummer's eve and deep in an enchanted forest mischief is stirring. The Fairy King and Queen are feuding, four runaway lovers are tying themselves in knots, and a troupe of quite appalling actors are preparing a theatrical extravaganza destined to impress. With shapeshifting trouble-maker Puck at the helm, the course of true love never did run smooth... Three Inch Fools are an innovative touring company acclaimed for staging bold, vibrant productions in a fast-paced and musically driven style. Having built a reputation as one of the UK's best-loved open-air touring theatre companies, 2025 sees the Fools celebrate their 10th anniversary with their take on arguably Shakespeare's most iconic comedy."

15 August: Sports & Social Club, WINTERBORNE STICKLAND, DT11 0NT. 7pm. £16 / £8. 01258 881329 / artsreach.co.uk.

'ORDINARY DECENT CRIMINAL'

4 July

The Pound Arts Centre, Pound Pill, CORSHAM, SN13 9HX. 7.30pm. £16.50. 01249 701628 / poundarts.org.uk. "This play follows recovering addict Frankie as he enters the brave new world of a liberal prison experiment."



'NOT FOR KEEPS'

4 and 5 July

The Corn Exchange, High East Street, DORCHESTER, DT1 1HF. 7.30pm (Saturday matinee 2pm). £14 / £12. 01305 266926 / dorchesterarts.org.uk.



'EXPLAINING BEING PAN TO NAN'

5 July

Bridport Arts Centre, 9 South Street, BRIDPORT, DT6 3NR. 8pm. £16. 01308 424204 / bridport-arts.com. "No-holes-barred stand up-comedy show."

EASTVILLEPROJECT.ORG.UK

eps

INDEPENDENT RECORD STORE

VINYL / CDS / CASSETTES / BAND MERCHANDISE /
VINTAGE CLOTHES / BOOKS / BAND EQUIPMENT /
IN-STORE GIGS / DJ SESSIONS / REHEARSAL SPACE

UNIT 29, VICARAGE WALK, THE QUEDAM, YEOVIL

@epsyeovil

We are a funky, independent record shop stocking a great range of new and preloved vinyl, specialising in Reggae, Hip Hop, Soul, Funk, World, Electronic, Jazz, Blues, Alternative, Indie, Rock, Pop and more

8a Pope Street, Brewery Square, Dorchester, DT1 1GW
Tuesday to Saturday from 10am

Performance

'ROBIN HOOD'

6 July
Maumbury Rings, Weymouth
Avenue, DORCHESTER, DT1 1QZ.
6.30pm. £16 / £14. 01305 266926 /
dorchesterarts.org.uk. "Join utter
legends Robin, Marian and the Merry
Men in Sherwood Forest for a
hilariously adventurous take on the
timeless tales of everyone's favourite
archer."

'MUCH ADO ABOUT NOTHING'

7 - 12 July
Cleeve House, SEEND, SN12 6PG.
Monday - Friday 6.30pm, Saturday
12.30 and 6pm. £25 / £10. 07771
703226 / shakespearelive.com. "A
joyous mixture of love, comedy,
plotting, revenge and bucolic English
village life, with original music,
gorgeous costumes and atmospheric
sound and lighting."

JOHN SERGEANT

8 July
Salisbury Playhouse, Malthouse
Lane, SALISBURY, SP2 7RA. 7.30pm.
£26. wiltshirecreative.co.uk.

'SHOWSTOPPER! THE
IMPROVISED MUSICAL'

9 July
Salisbury Playhouse, Malthouse
Lane, SALISBURY, SP2 7RA. 7.30pm.
£16. wiltshirecreative.co.uk.



SCUMMY MUMMIES: 'HOT MESS'

11 July
Lighthouse, 21 Kingland Road,
POOLE, BH15 1UG. 7.45pm. 01202
280000 / lighthousepoole.co.uk.
"From menopause to mansplaining,
teenagers to Tinder, no subject is
safe as Helen and Ellie return with
new songs, sketches, stand-up, and
of course, sparkly new catsuits."



GUY JOHNSTON

Beaminster Festival

"Art exhibition, secret galleries and gardens, al fresco theatre, literary events and amazing music including Steve Knightly, Lizzie Ball, the Fairey Brass Band, and some stunningly high calibre classical concerts including Guy Johnston."

28 June - 6 July: Various locations in and around BEAMINSTER, Dorset. 03336 663366 / beaminsterfestival.com.

'LET US TAKE YOU TO PARIS'

11 July
Backyard Theatre, 5 Anchor Street,
WATCHET, TA23 0AZ. 7.30pm. £15.
0333 666 3366 / backyard-theatre-
watchet.uk. "Timeless French
melodies and captivating tales of
Parisian life."

JOHN UDRY: 'HAVING A BALL'

12 July
The Pound Arts Centre, Pound Pill,
CORSHAM, SN13 9HX. 7.30pm. £14.
poundarts.org.uk. Comedy.

'OMNIVERSE SHOWCASE'

12 July
Bridport Arts Centre, 9 South Street,
BRIDPORT, DT6 3NR. 7pm. £12 /
£10. 07379 747301 /
jawbonecollective.org.uk. "Powerful
words and performances reflecting
the realities of what it is to be an
unheard or marginalised voice."

'EXTRA ORDINARY'

16 July
The Corn Exchange, High East
Street, DORCHESTER, DT1 1HF.

7.30pm. £15 / £13. 01305 266926 /
dorchesterarts.org.uk. "Rachel and
Max are an ordinary couple living
ordinary lives until something
extraordinary turns everything
upside down."

'CALL YOURSELF AN IRISH MAN?'

17 July
The Corn Exchange, High East
Street, DORCHESTER, DT1 1HF.
7.30pm. £14 / £12. 01305 266926 /
dorchesterarts.org.uk.

Shaftesbury Arts Centre



The Sound of Music
Music & Drama Group
3 - 5 and 10 - 12 July
£17.50 / £15 / £10



Belle Street: 'Glitter,
Guilt & Good Intentions'
19 and 20 July, 11am
Age 12+ / £10



Mr. Burton (12A)
Film
6 July (5pm) and 8 July
(2pm) / From £5



'Where Joy Begins'
Four artists
20 - 26 August
10am - 4pm daily



'A Streetcar Named
Desire'
National Theatre Live
26 July, 7pm, £15 / £12.50

11 - 13 Bell Street, Shaftesbury, Dorset SP7 8AR 01747 854321 • shaftesburyartscentre.org.uk

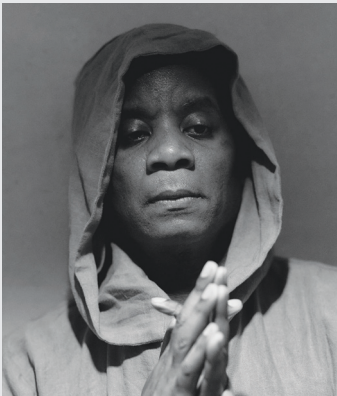


Blue Ghost

"Contemporary flamenco dance production that draws your attention to the unexpected beauty and rhythm harboured in the insect world."
11 July: The Corn Exchange, High East Street, DORCHESTER, DT1 1HF. 7.30pm. £18 / £16. 01305 266926 / dorchesterarts.org.uk.



JASON MANFORD: 'A MANFORD ALL SEASONS'
17 July
Lighthouse, 21 Kingland Road, POOLE, BH15 1UG. 7.30pm. 01202 280000 / lighthousepoole.co.uk. Comedy.



RODREGUEZ KING-DORSET
18 July
The Pound Arts Centre, Pound Pill, CORSHAM, SN13 9HX. 7.30pm. £12. 01249 701628 / poundarts.org.uk. "Bold, moving solo drama blending madness, memory, and Muhammad Ali's voice."



TOM ROSENTHAL + ROGER MONKHOUSE + MAIA TASSLINI + ANDREW WHITE
19 July
The Pound Arts Centre, Pound Pill, CORSHAM, SN13 9HX. 7.30pm. £16. 01249 701628 / poundarts.org.uk. Comedy.

'THE SECOND SUMMER OF LOVE'
19 July
Lighthouse, 21 Kingland Road, POOLE, BH15 1UG. 8pm. 01202 280000 / lighthousepoole.co.uk. "Uplifting, high-energy, physical-theatre story about coming of age and mid-life recovery."

'DORSET SONGS OF STONE AND SEA'
22 and 23 July
Sandy Hill Arts, Sandy Hill Lane, CORFE CASTLE, BH20 5JF. 6.30pm. Free entry. 07929 771219. "Music and spoken word collaboration celebrating the heritage of Purbeck quarries and stone."

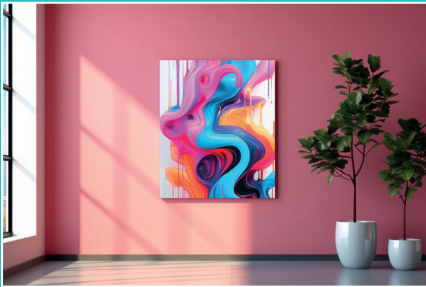
'THE JUNGLE BOOK'
23 - 26 July
Salisbury Playhouse, Malthouse Lane, SALISBURY, SP2 7RA. 2pm and 7pm. £12. wiltshirecreative.co.uk. "Experience the wonder of the wild in the heart of a magical jungle with Stage 65 Youth Theatre."

'THE TIME MACHINE'
25 July
Backyard Theatre, 5 Anchor Street, WATCHET, TA23 0AZ. 7pm. £10 / £8. backyard-theatre-watchet.uk.

TOM BAILEY: 'WILD THING!'
26 July
The Pound Arts Centre, Pound Pill, CORSHAM, SN13 9HX. 7.30pm. £16 / £15. poundarts.org.uk. Comedy.

CIRCUS RAJ
30 July
Millennium Green, BRIDPORT, DT6 3JL. 3pm. £16 / £15 / £12. 01308 424204 / bridport-arts.com. "Aerialists, acrobats, musicians, slack-rope walkers, giant puppet characters in eye-watering displays."

MIRACLE THEATRE: 'TWELFTH NIGHT'
31 July
Village Hall Field, IBBERTON, DT11 0EL. 7pm. £16 / £8. 07771 561099 / artsreach.co.uk. "Blending Miracle's playful spirit with the Bard's wit, expect plenty of belly laughs, heartache, gloriously outrageous characters, and a contemporary twist proving once and for all that it's hearts, not parts, that truly matter!"



PERFECT POSTERS

SCANNING • PHOTOGRAPHY • CALENDARS • INVITATIONS • BOOKMARKS • BROCHURES • FLYERS • STICKERS
BANNERS • FOAMEX SIGNS • LETTERHEADS • BUSINESS CARDS • FOLDERS • DESKPADS • BESPOKE ITEMS



AMAZING GICLÉE PRINTS



FLAYMOUSE MEDIA

01935 479 453

WWW.FLAYMOUSE.COM

8 BUCKLAND ROAD, YEovil, SOMERSET BA21 5EA



POSTCARDS AND GREETING CARDS

Performance



Sara Barron

"An evening of laugh-out-loud comedy with one of the fastest-rising comedians of her generation."
12 July: Salisbury Playhouse, Malthouse Lane, SALISBURY, SP2 7RA. 7.30pm. £16. 01722 320333 / wiltshirecreative.co.uk.

MIRACLE THEATRE: 'TWELFTH NIGHT'
1 August
The Bay, KIMMERIDGE, BH20 5PF. 7pm. £16 / £8. 07879 473693 / artsreach.co.uk. See 31 July.

'DOCTOR DOLITTLE'
1 August
The Corn Exchange, High East Street, DORCHESTER, DT1 1HF. 7pm. £5. 01305 266926 / dorchesterarts.org.uk.



ALABASTER DEPLUME
1 August
Sandy Hill Arts, Sandy Hill Lane, CORFE CASTLE, BH20 5JF. 7.30pm. £18. sandyhillarts.co.uk. "Brilliant and boundary defying saxophonist and poet."

'HMS PINAFORE'
1 August
Maumbury Rings, Weymouth Avenue, DORCHESTER, DT1 1QZ. 7pm. £20 / £18. 01305 266926.

POETRY WEEKEND
1 - 3 August
Sandy Hill Arts, Sandy Hill Lane, CORFE CASTLE, BH20 5JF. 2pm. £12. 07929 771219 / sandyhillarts.co.uk. "A hugely creative weekend of top quality poets, music, and workshops."

MIRACLE THEATRE: 'TWELFTH NIGHT'
2 August
Higher Orchard, SANDFORD ORCAS, DT9 4RP. 7pm. £16 / £8. 07734 088958 / artsreach.co.uk. See 31 July.

'BIGGER THAN BROADWAY'
2 August
Lighthouse, 21 Kingland Road, POOLE, BH15 1UG. 2 and 7pm. lighthousepoole.co.uk. "Performing arts school Strictly Stage perform excerpts from award-winning musicals."

RIDDLESTICK: 'BARLEYCORN'
2 August
Backyard Theatre, 5 Anchor Street, WATCHET, TA23 0AZ. 7.30pm. £15. backyard-theatre-watchet.uk. "Thrilling new musical comedy."

'ANCHORED IN AIR'
5 August
East Quay, Harbour Road, WATCHET, TA23 0AQ. 4pm. 01984 263103 / eastquaywatchet.co.uk. "Aerial theatre show."

lighthouse
Arts & Entertainment | Poole

THU 11 – SUN 14 SEP

Faulty Towers
THE DINING EXPERIENCE

Take a seat in our Beacon café and immerse yourself in the show where dinner and internationally acclaimed theatre combine. Comedy reigns as Basil, Sybil and Manuel greet, seat and serve you while everything seems to be going wrong.



TUE 16 – SAT 20 SEP

Little Women

Stylish, humorous and compassionate, Anne-Marie Casey breathes new life into the world of sisterhood, courage and ambition in this beautifully crafted adaptation of Louisa May Alcott's much-loved novel.

★★★★★
The Guardian



SAT 20 SEP

Sherlock Holmes
THE LAST ACT

The year is 1916 and Holmes is drawn from two years of Sussex retirement for the funeral of his friend Dr Watson. Returning to Baker Street, Holmes resolves 'the last act' of his epic career in a theatrical evening and tour de force performance from Nigel Miles-Thomas.



MON 8 – TUE 9 SEP

Stewart Lee vs
The Man-Wulf

Stewart Lee shares his stage with a tough-talking werewolf comedian from the dark forests of the subconscious who hates humanity. Can the beast inside us all be silenced with the silver bullet of Lee's unprecedentedly critically acclaimed style of stand-up?



THU 2 OCT

An Evening Without
Kate Bush

Sarah-Louise Young and co-creator Russell Lucas bring this mind-blowing show to Poole after touring across the UK and internationally, paying glorious homage to the music, fans, and mythology of one of the most influential voices in British music.



| Different every day

Performance



'TREASURE ISLAND'
10 August
Village Hall, SIXPENNY HANDLEY, SP5 5NJ. 11am. £8 / £6. 07771 983883 / artsreach.co.uk. "Live music, singing and dancing, plus an irresistible mixture of colourful characters and gripping action."

'TREASURE ISLAND'
10 August
Portman Hall, SHILLINGSTONE, DT11 0SF. 3pm. £8 / £6. 01258 860319 / artsreach.co.uk. See 10 August.

'PRISCILLA QUEEN OF THE DESERT: THE MUSICAL'
14 - 23 August
The Regal Theatre, 10 - 16 The Avenue, MINEHEAD, TA24 5AZ. 7.30pm. £15. regaltheatre.co.uk.

'THE MAN WHO LEFT THE TITANIC'
16 August
Backyard Theatre, 5 Anchor Street, WATCHET, TA23 0AZ. 7.30pm. £15. backyard-theatre-watchet.uk.



'OLIVE BRANCH'
16 August
East Quay, Harbour Road, WATCHET, TA23 0AQ. 6pm. 01984 263103 / eastquaywatchet.co.uk. "A feel-good tale of friendship and the wonder of the natural world, told through a captivating mixture of physical theatre and martial arts."



Tom Glover

"In association with the Hardy Har! Comedy Festival, we are delighted to welcome the UK's most unlikely TikTok sensation Tom Glover, as he embarks on his first national tour for 2025, a live stand-up show from the man whose online reels have reached millions of people worldwide. Featuring hilarious tales of marriage, parenting and growing up in the '90s - if you're at an age where coming to this show is an admin nightmare of babysitters, bedtimes and designated drivers, then this is probably the show for you."

12 July: The Corn Exchange, High East Street, DORCHESTER, DT1 1HF. 7pm. £15 / £13. 01305 266926 / dorchesterarts.org.uk.



'THE MUSHROOM SHOW'
18 August
Community Hall, LITTON CHENEY, DT2 9AU. 2pm. £8 / £6. 07799 612941 / artsreach.co.uk. "Packed full of interactive games, playful music and lots of laughs for all the family, critically acclaimed Scratchworks Theatre fuse their signature style of physical comedy with the world of fungi, bringing together science, music and participatory activities for whole families to experience together."

'THE MUSHROOM SHOW'
19 August
Village Hall, ALDERHOLT, SP6 3RB. 11am. £8 / £6. 01425 652729 / artsreach.co.uk. See 18 August.

'ALICE THROUGH THE LOOKING GLASS'
19 August
Maumbury Rings, Weymouth Avenue, DORCHESTER, DT1 1QZ. 2.30pm. £15 / £10. 01305 266926 / dorchesterarts.org.uk. "Quantum Theatre present a brand new adaptation of Lewis Carroll's timeless classic."

'THE RIVALS'
28 August
Maumbury Rings, Weymouth Avenue, DORCHESTER, DT1 1QZ. 7pm. £16 / £14. 01305 266926 / dorchesterarts.org.uk. "When fashionable 18th century London society comes to take the waters in the spa-town of Bath, comic confusion, daring duels and romantic entanglements abound!"



'DINOSAUR WORLD LIVE'
29 - 31 August
Lighthouse, 21 Kingland Road, POOLE, BH15 1UG. Friday 2pm, Saturday and Sunday 11am and 2pm. lighthousepoole.co.uk. "Dare to experience the dangers and delights of the award-winning Dinosaur World Live in this roarsome interactive show for all the family."

'A NIGHT OF CONSCIOUS RAP, RHYMES & RHYTHMS'
30 August
Vinyl Van, Pope Street, DORCHESTER, DT1 1GW. 8pm. £12. 07973 764666. "Words that speak to the mind, rhythms that move the body, and rhymes that stir the soul."



EVOLVER
magazine

Subscribe! 6 issues for £30

EVOLVER
magazine

FREE LISTINGS

Exhibition and performance listings should be emailed to listings@evolver.org.uk

Please send ALL information in the following order:

Event, date(s), venue, address (including postcode), times, admission fee (if any), contact number / website, up to 30 words about your event

Evolver Magazine

Sponsors and Outlets



Map painting by Leo Davey

AC@ARTS
((acoustic))
DISTRIBUTION
ARNOLFINI
EST. 1961
ART and BEYOND
aztecmedia
b-side
BlackSwanArts
Boilerhouse Gallery
BOURNEMOUTH ARTS CLUB

BOURNEMOUTH symphony orchestra
BRIDPORT ARTSCENTRE
BULL MILL STUDIO
Concerts IN THE West
DorchesterArts
DORSET VISUAL ARTS
EAST QUAY
HEART OF THE TRIBE ART GALLERY

ILMINSTER arts centre
AT THE MEETING HOUSE
Kit Glaisyer
lighthouse
Arts & Entertainment | Poole
Pound Arts
RWA
Shaftesbury Arts Centre
The Slade Centre
SLADERS YARD
SOW somerset art works

Sou'-Sou'-West
SOUTH WEST ART COURSES
THG
Thelma Hulbert Gallery
Tincleton Gallery
Walford Mill Crafts
WILTSHIRE CREATIV
YEOVIL ART SPACE
EVOLVER MAGAZINE 20 25 YEARS

Evolver Magazine

EVOLVER MAGAZINE is available **FREE** at the following Wessex outlets:

ABBOTSBURY: Abbotsbury Studio, Dansel Gallery. AXMINSTER: Archway Bookshop, Heritage Centre, Unique Framecraft. BATH: Bath Artists' Studios, Beaux Arts, The Edge / ICIA, Holburne Museum of Art, Michael Tippett Centre, University of Bath, Victoria Art Gallery. BEAMINSTER: Art and Beyond, Beaminster Books, Yarn Barton Centre. BLANDFORD: Blandford Fashion Museum, Bryanston Arts Centre, Forum Café, Forum Framers. BOSCOMBE: Artcetera. BOURNEMOUTH: All Fired Up, Big Brother Music & Film, Pavilion Dance, Royal Bath Hotel, Russell-Cotes Museum & Art Gallery. BOWER HINTON: The Hollies Hotel. BRADFORD ON AVON: Wiltshire Music Centre. BRIDGWATER: Bridgwater Arts Centre, Engine Room. BRIDPORT: Art Unlimited, Bridport Arts Centre, Bridport Old Books, The Bull Hotel, Clocktower Records, Literary and Scientific Institute, Lyric Theatre, Millside Picture Framing. BRISTOL: Arnolfini, Bocabar, Bristol Beacon, Bristol Fine Art, CentreSpace, Clifton Contemporary, Clifton Fine Art, Create Centre, Folk House, Jamaica Street Artists, Lime Tree Gallery, Museum & Art Gallery, New Cut Coffee, Old Vic, PRSC Gallery, RWA, Spike Island, St George's, Tobacco Factory, Trinity Centre, UWE, Watershed. BRUTON: At The Chapel, Bruton Museum. BUDLEIGH SALTERTON: Brook Gallery. BURNHAM ON SEA: Princess Theatre & Arts Centre, Seabreeze Gallery. CASTLE CARY: Bailey Hill Bookshop, David Simon Gallery. CHARD: Art Café, Barleymow's, Hornsbury Mill Hotel. CHARMINSTER: Flux Art Supplies. CHEDDAR: Cheddar Art School. CHEDDON FITZPAINE: Hestercombe Gallery. CHIPPENHAM: Chippenham Museum. CHRISTCHURCH: Hatch Gallery, Hayloft Gallery, Red House Museum. CLEVEDON: Studio 3 Gallery. CORFE CASTLE: Boilerhouse Gallery, Morton House Hotel, Village Stores. CORSHAM: Pound Arts. CREWKERNE: Art4All / ArtyCrafty. CROCKERTON: Bull Mill Arts. CROWCOMBE: Halsway Manor. CULLOMPTON: Cullompton Community College. DEVIZES: Wiltshire Museum. DORCHESTER: Corn Exchange, Dorset Museum, Duke's,

Frank Herring & Sons, Gallery on The Square, Shire Hall, The Little Keep, Vinyl Van. EAST LAMBROOK: East Lambrook Manor Gardens. EXETER: Academy of Music, Barnfield Theatre, The Cavern, Corn Exchange, Exeter School of Art, Glorious Art Cafe, Phoenix Arts Centre, Royal Albert Memorial Museum, Southgate Gallery. FROME: Bat Print Studio, Black Swan Arts, Cheese and Grain, Merlin Theatre, Raves From The Grave, Rook Lane Arts, Rise Centre, Whittox Gallery. GILLINGHAM: The Idea Works, Slade Centre. GLASTONBURY: Abbey Muse Gallery, Facets Of Avalon, Glastonbury Galleries, Heart Of The Tribe Gallery, Red Brick Building, Rural Life Museum. HESTERCOMBE: Hestercombe Gallery. HONITON: The Beehive, Boston Tea Party, School Of Art And Wellbeing, Thelma Hulbert Gallery. ILMINSTER: Ilminster Arts Centre, The Millhouse. KEYNSHAM: Chocolate Quarter. LANGPORT: 4 Every Cloud, Art Tea Zen, Great Bow Wharf, Shakspeare Glass. LYME REGIS: Coombe Street Gallery, Fine Art Framing, Lyme Regis Museum, Marine Theatre, Studio 19. LYTCHETT MINSTER: Barn Cafe, Courtyard Craft Centre. MARTOCK: Martock Gallery Yandles Cafe. MINEHEAD: Courtyard Framing, Leo Davey Gallery, Regal Theatre. MORCOMBELAKE: Artwave West. MUCHELNEY: John Leach Gallery. NEWTOWN: R C Arts. NORTH CURRY: Community Café. OTTERTON: Otterton Mill. PENN HILL: Josephine Wall Shop. PEWSEY: McNeill Gallery. POOLE: Arts University Bournemouth, Boiler Room Records, Guildhall Gallery, Lighthouse, Gallery Upstairs, Originals, Poole Museum, Poole Violins, Towngate Gallery And Framing. PORLOCK: Churchgate Gallery, Melody Art. PORTLAND: B-Side Outpost, White Stones. SALISBURY: City Hall, Fisherton Mill, Salisbury Arts Centre, Salisbury Museum, Salisbury Playhouse, Studio 53, Vanner Gallery, Wiltshire Gallery, Young Gallery. SEATON: Arts Café. SEAVINGTON: Village Shop.

SHAFTESBURY: Down The Steps, The Cygnet, Grosvenor Hotel, Pictureframes, Shaftesbury Arts Centre. SHEPTON MALLET: One Craft Gallery. SHERBORNE: Caffé Nero, Old Barn Framing Gallery, The Beat & Track, The Sherborne, Winstone's. SIDMOUTH: East Devon Art Academy, Flo and Us, Kennaway House, Winstone's. SOMERTON: ACE Arts, Gifted Company & Gallery Coffee Shop. SOUTH PETHERTON: David Hall. STALBRIDGE: Dike & Sons, Guggleton Farm. STOBOROUGH: Furzebrook Studios. STOKE ST GREGORY: Willow & Wetlands Centre. STOURHEAD: First View Gallery. STREET: Millfield School Atkinson Gallery, Strode Theatre. STURMINSTER NEWTON: The Exchange, Poet's Corner, Wessex Photographic. SWANAGE: Durlston Castle, Hollinghead Studio Gallery, Mowlem Theatre, Mulberry Bush Gallery, Purbeck New Wave Gallery, Quarr Gallery. SYMONDSBURY: Sou'-Sou'-West. TAUNTON: Brewhouse Theatre, CIC CIC, Fine Art And Framing, Jane Amour, Museum of Somerset, Quantock Art And Framing, Queen's College, Tacchi-Morris Arts Centre, University Centre Somerset. TINCLETON: Sculpture by the Lakes, Tincleton Gallery. TISBURY: Messums Wiltshire. TIVERTON: Lantic Gallery. TROWBRIDGE: Arc Theatre, Court Street Gallery, The Lamb, Trowbridge Museum. WAREHAM: Purbeck Artisan Yard, Rex Cinema. WARMINSTER: Athenaeum Centre. WATCHET: East Quay, WELLINGTON: Old Brick Workshop. WELLS: A2 Gallery, Andelli Art, Bishop's Eye, Heritage Courtyard Studios. WEST BAY: Sladers Yard. WEST COKER: Lanes, Old School Room. WESTHAY: Somerset Crafts. WESTON-SUPER-MARE: Frame Station, Playhouse, Weston College. WEYMOUTH: Cove Gallery, Happy Crab Gallery, Unbearable Design Ltd, Weymouth College, Weymouth Pavilion. WILLITON: J Gliddon & Sons. WIMBORNE: Allendale House, Otter

Gallery, Square Records, Walford Mill Craft Centre. WIVELISCOMBE: Community Office. WORTH MATRAVERS: Burngate Stone Centre. YEOVIL: EPS, Westlands Entertainment Venue, Yeovil Art Space. YETMINSTER: Old School Gallery.

Plus selected TOURIST INFORMATION CENTRES and LIBRARIES throughout Wessex

EVOLVER SPONSORS

ACE Arts
Arnolfini
Art And Beyond
Aztec Media
B-Side
Black Swan Arts
Boilerhouse Gallery
Bournemouth Arts Club
Bournemouth Symphony Orchestra
Bridport Arts Centre
Bull Mill Studio
Concerts in the West
Dorchester Arts
Kit Glaisyer Fine Art
East Quay
Heart of the Tribe Gallery
Ilminster Arts Centre
Kit Glaisyer Fine Art
Lighthouse
Pound Arts
Royal West of England Academy
Shaftesbury Arts Centre
The Slade Centre
Sladers Yard
Somerset Art Works
Sou'-Sou'-West Gallery
South West Art Courses
Thelma Hulbert Gallery
Tincleton Gallery
Walford Mill
Wiltshire Creative
Yeovil Art Space

Our EVOLVER SPONSORS make Evolver Magazine possible. We couldn't do it without their ongoing support and advertising, so we make sure they get priority coverage in these pages and in our Instagram posts.

If you'd like to join them, please email simon@evolver.org.uk to find out about our Sponsorship offer (for example our quarter page Evolver Sponsors pay £190 instead of £260 for each bi-monthly advert).



EVOLVER MAGAZINE is delivered to all our Wessex outlets by **ACOUSTIC DISTRIBUTION** (07397 853006)

EVOLVER MAGAZINE

THE WESSEX ARTS AND CULTURE GUIDE

Editor **SIMON BARBER**

Assisted by **SUZY RUSHBROOK**
suzy@evolver.org.uk

Evolver Writers

FIONA ROBINSON / fionarobinson.com
PAUL MASKELL / thebeatandtrack.co.uk

Graphic Design **Simon Barber**

Front Cover

'FIN KEEL' by **VANESSA JACKSON**
Oil on canvas, 214 x 183 cm, 2023

DEADLINE FOR EVOLVER MAGAZINE 145

September and October 2025

TUESDAY 5 AUGUST



EVOLVER MEDIA

8 BUCKLAND ROAD, PEN MILL TRADING ESTATE,
YEOVIL, SOMERSET BA21 5EA

Email simon@evolver.org.uk

Telephone 01935 808441

Website evolver.org.uk

Hosted by **AZTEC MEDIA**

Instagram [evolvermagazine](https://www.instagram.com/evolvermagazine)

Published by **EVOLVER MEDIA LIMITED**

Pre-Press by **FLAYDEMOUSE**

01935 479453 / flaydemouse.com

Printed by **BISHOPS PRINTERS**

bishops.co.uk

Distributed by **ACOUSTIC DISTRIBUTION**

07397 853006 / acousticdistribution.co.uk

SOMERSET OPEN STUDIOS

13 – 28 September 2025

154 venues to explore

16 days to meet local
artists and makers

3 weekends of family
friendly activities

IMAGE: Artist, Jo Lathwood



Discover creative communities.



Visit our website:
somersetartworks.org.uk

SOW
somer
set
art works



TRACTORED BY BEETLES

21 JUNE – 14 SEPTEMBER 2025

Artists Alice Crane, Jon England, Liz Gregory, Fiona Hingston, Tim Martin and André Wallace respond to the landscapes of the West Country and Simon Armitage's poem Fugitives.

SRLM
SOMERSET RURAL LIFE MUSEUM

SRLM.ORG.UK
GLASTONBURY BA6 8DB
ADMISSION AS PART OF MUSEUM ENTRY

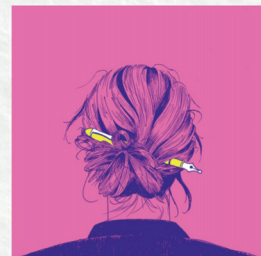
SW
SOUTH WEST
HERITAGE TRUST

WILTSHIRE CREATIVE

Little Women

3 – 13 SEPTEMBER
Salisbury Playhouse

Anne-Marie Casey's lovingly
crafted adaptation of Little
Women stars Belinda Lang
and Honeysuckle Weeks.



5 Mistakes That Changed History

FRI 12 SEPTEMBER
Salisbury Arts Centre

A hilarious historical
storytelling show about five
people whose mistakes (big
and small!) changed the world.



An Evening Without Kate Bush

SAT 27 SEPTEMBER
Salisbury Playhouse

A joyful, award-winning
show celebrating Kate Bush's
music, fans and legacy.



Chris Chibnall In Conversation

THU 2 OCTOBER
Salisbury Arts Centre

Screenwriter and playwright
Chris Chibnall discusses
Broadchurch, Doctor Who and
his 2025 novel.



Blithe Spirit

2 – 25 OCTOBER
Salisbury Playhouse

Experience the wit and
humour of Noël Coward's
hilarious farce, Blithe Spirit,
directed by Anthony Banks
and designed by Terry
Parsons.



Book now at
wiltshirecreative.co.uk

Discover
what's on!



JANE AUSTEN DOWN TO THE SEA

14 June - 14 September 2025

Dorset Museum
& Art Gallery
Dorchester



Jane Austen
250
1775 - 2025

Dorset
Museum
& Art Gallery
dorsetmuseum.org



**ARTS
UNIVERSITY
BOURNEMOUTH**