

THE **FREE** WESSEX ARTS AND CULTURE GUIDE

EVOLVER magazine



September and October 2025

A man with a grey beard and bald head, wearing a green long-sleeved shirt and brown leather apron, is smiling and leaning his head on his hand. He is in a workshop with shelves in the background. In the foreground, there is a complex mechanical sculpture of a rabbit made of metal gears and parts. A red hair dryer is also visible on the workbench.

DEVON OPEN STUDIOS

6 – 21 SEPTEMBER

Free colour guide available
email openstudios@devonartistnetwork.co.uk
or visit devonartistnetwork.co.uk



MEET ARTISTS AND MAKERS IN THEIR STUDIOS ACROSS DEVON

Exhibit A

September and October 2025



Björk Haraldsdóttir: Lögberg

White stoneware, black slip sgraffito ceramic, 45 x 63 x 29 cm

ARTIST STATEMENT: "The Lögberg or Law Rock was the first democratic parliament in the world, established within a dramatic faultline in Iceland. I made this monumental vessel with its wide strong base and curved tapering sides as an organic form that feels both ancient and changed by time, rather like the landscape of Iceland itself. Onto this I have draped a monochrome pattern like the surface of the Lögberg which resounded with the words of those who spoke there. In this case, I have scraped away a black slip, revealing white stoneware below. The texture of the work is important, it invites touch."

Until 13 September: Sladers Yard, WEST BAY, Bridport, DT6 4EL. Wednesday - Saturday 10am - 4.30pm. 01308 459511 / sladersyard.co.uk.

@ceramics_by_bjork

Front cover: ADANNAY 'HOME IS WHERE THE HEART IS' (Photograph by Joseph Murphy)

10 October: Village Hall, Holford • 11 October: Village Hall, Churchinford • 12 October: The Old Methodist Church, Axbridge • takeart.org

Headlines

September and October 2025



TERRY PARSONS 'BLITHE SPIRIT' (Model box design)
Photograph by Lexi Parfitt

Blithe Spirit

This Autumn a stunning new production of *Blithe Spirit* directed by Anthony Banks with design by Terry Parsons will open at Salisbury Playhouse, part of Wiltshire Creative. First staged in 1941, *Blithe Spirit* is often regarded as Coward's best work. This comic farce is celebrated for its sharp wit, fast-paced dialogue and clever stage tricks. It tells the story of a novelist haunted by his first wife, whose ghost is unwittingly conjured up during a séance.

This exciting new production is directed by Anthony Banks, a former associate director at the National Theatre, and designed by Terry Parsons who has designed 37 productions in London's West End. Salisbury Playhouse host many performances throughout the year, but what is so unique about this one is that it is entirely home grown. The number of theatres in the country able to do this is rapidly diminishing, few now produce from scratch and even fewer have the luxury of an on-site workshop.

The process of theatre design is fascinating, all starting with a stage maquette which will replicate all the details of the completed set design, a

work of art in itself. Accurate to the extreme, including wall colours, wallpaper, moulding details and flooring, it's also used to plan stage lighting as well as the build strategy and costings. Once this model has been completed by the designer it is passed to the talented production team to build, adjusting finer details and problem solving along the way. With a co-production such as this the team not only have to work to the



Salisbury stage plan but it also has to accommodate Blackpool as well. Salisbury supports a full time multi-talented workshop team of three, who when working on a home grown production are used to turning their hands to anything. The stage management team then go out to source authentic props while the costume department, consisting of two full-time staff, work as sustainably as possible to dress the entire cast using recycled materials as often as possible. They work to a code of practice known as the 'Theatre Green Book' which ensures the cultural sector is as sustainable as possible but means all their resources and materials must be meticulously stored and catalogued so they can be used efficiently.

Wiltshire Creative is a hub for theatre practitioners within the Southwest, nurturing the industry and supporting several full time roles. While fewer and fewer theatres are able to produce in-house productions these skilled workshop and wardrobe teams are busy behind the scenes at Salisbury Playhouse bringing Parsons' *Blithe Spirit* designs to life. Despite the national downturn Salisbury appears to be thriving and their future programme, under Creative Director Gareth Machin, looks bright and enticing.

Southwest audiences will be the first to see the exquisite art deco style set and costumes before they travel across the country. The production goes into rehearsals at Salisbury Playhouse in September and runs from 2 until 25 October 2025. After its Salisbury run, the production will transfer to Blackpool Grand Theatre from 28 October until 1 November.

Expect mischief, mayhem and plenty of laughs in this beautifully crafted production.

Suzy Rushbrook

'BLITHE SPIRIT' 2 - 25 October

Salisbury Playhouse, Malthouse Lane,
SALISBURY, SP2 7RA. 7.30pm (matinees
2.15pm). £12. 01722 320333 /
wiltshirecreative.co.uk.



Follow **evolvermagazine** on Instagram

Headlines



May Morris: Art & Advocacy

An exhibition exploring the remarkable life and work of artist, embroiderer and socialist, May Morris, daughter of Arts and Crafts designer William Morris, has come to Bournemouth. On loan from The William Morris Society this body of work features original designs for Morris & Co., wallpapers and embroidery.

An extraordinary woman in any era, May was not only a talented craftswoman but also an advocate for women in the artistic community. May wrote towards the end of her life: "I'm a remarkable woman, always was, though none of you seemed to think so."

Her astonishing accomplishments were largely forgotten until the end of the twentieth century, when public interest was renewed. Much like her father, May was talented in many artistic fields, she became Head of Embroidery at the decorative arts firm of Morris & Co. aged just twenty-three, whilst also designing their wallpapers. She excelled in fine needlework, producing designs, teaching courses, lecturing, and writing on the subject.

She co-founded the Women's Guild of Arts in 1907 to enable female artists and makers to fully engage with and participate in artistic culture. Before this, female artists had been restricted by a lack of arts and crafts organisations extending their membership to women.



DESIGN FOR 'HONEYSUCKLE'
(© The William Morris Society)

The Women's Guild of Arts enabled members to discuss, develop and exhibit their work. May worked tirelessly on maintaining her father's legacy and greatly contributed to the literature on William Morris, including editing the 24 volumes of her father's collected works.

"May Morris' story is one of incredible talent and unwavering determination, and it's a privilege to share her remarkable yet overlooked work and pioneering support for female creatives," says Sarah Newman, Manager at the Russell-Cotes Museum.

The exhibition is just a small part of the fantastic collection of artwork on display at the gallery. As well as plenty of children's activities to ensure engagement from all ages, plus the most stunning toilets in town!

Suzu Rushbrook

Until 5 October: Russell-Cotes Art Gallery & Museum, East Cliff, BOURNEMOUTH, BH1 3AA. Tuesday - Sunday 10am - 5pm. £9.50 / £5.01202 128000 / russellcotes.com.

Installation photographs by Eliza Naden



Thelma Hulbert Gallery

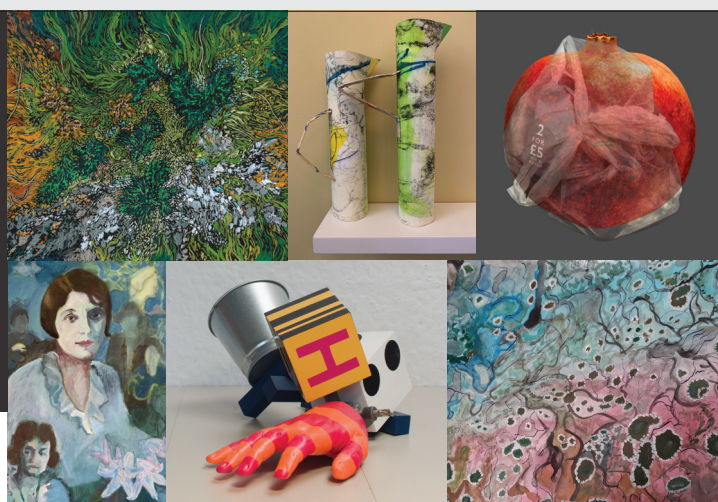
CAMP
WHERE ARE WE NOW?
6 September - 25 October 2025

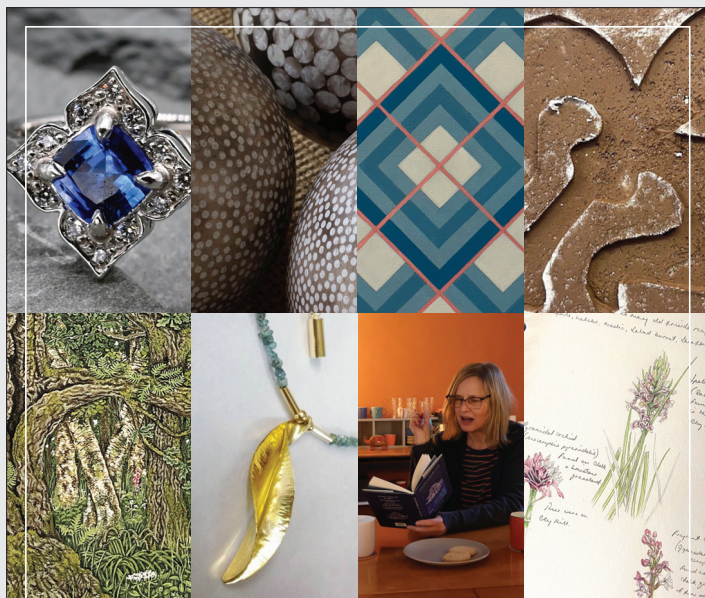
Elmfield House, Dowell Street, Honiton, Devon EX14 1LX
01404 45006 | info@thelmahulbert.com | thelmahulbert.com
Open: Tues - Sat 10am - 5pm | Free admission, donations welcome





thelmahulbertgallery





Black Swan Resident Artists

Exhibition dates

28 August to 6 September | 10am - 4pm

Previews

29 August 2025 | 6pm - 8pm

30 August 2025 | 10am - 12pm

Meet the Artists

6 September 2025 | 11am - 12pm

Long Gallery

Mon - Sun 10am - 4pm

2 Bridge Street, Frome BA11 1BB

blackswanarts.org.uk

Featuring

Sally Swannell

Pete Hemphall

Victoria Sackwild

Jane Sheppard

Dan Musselwhite

Kift Ceramics

The Write Place



BlackSwanArts



The Peacock Arts Trail 4th-12th October 2025

Celebrating the Arts in North-West Wiltshire

Get off the beaten track and discover an amazing array of artistic talent! Make sure to check out our high quality artists across their open studios and group exhibitions.

Sculpture
Painting
Textiles
Photography

Ceramics
Furniture
Printmaking
Jewellery

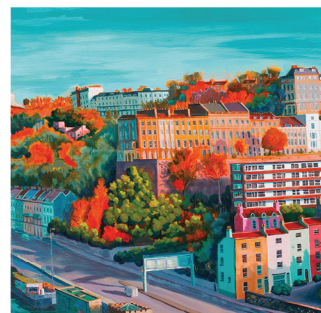


Image: Michael Sutherland



Image: Anya Beaumont

Pick up some wonderfully original gifts, discover one off locations and truly understand the maker behind the work.

Corsham, Box, Lacock, Yatton Keynell, Chippenham, Holt & surrounding villages

@peacockartstrail

www.peacockartstrail.co.uk



Free
Entry

**ATKINSON
GALLERY**



MILLFIELD

DEFORMED SURFACES

UNCOVERING SOMERSET LANDSCAPES

JESSE ALEXANDER

10 SEP - 10 OCT 2025

WED TO SAT | 9.30 AM - 5.00 PM

Find out more: millfieldschool.com/atkinson-gallery

Contact us: +44 (0)1458 444322 or atkinsongallery@millfieldschool.com

Visit us: Millfield School, Butleigh Road, Street, Somerset BA16 0YD



Headlines



'SPIKE' (2002)

Brian Rice

In 2002 Brian Rice began using his hoard of found objects to create his own brand of abstract constructions. Sculptures emerged from old farm gate hinges and other rusty metalwork, using driftwood boards as the base for arrangements.

These works have continued intermittently over the years and 2025 has seen Brian returning to make more, some featuring the three hundred plus coins, many of them foreign, that he found on Lyme Regis beach in the early '70s. Parts of farm wagons also feature in striking conjunction with car boot darts boards, along with painted cribbage boards incorporated with textile fragments, and so it goes on.

This exhibition features just a sample of objects from Brian's intriguing hoard made into striking and original art, and is a must see for fans of recycling and rust!

BRIAN RICE: 'FOUND OBJECT CONSTRUCTIONS'

18 September - 31 October

The Viewing Room, 13 Fore Street, CASTLE CARY, BA7 7BG. 01963 202030 / georgiastoneman.com.



PALOOKA 5 'METROKINO'

Palooka 5

Sci-fi surf combo Palooka 5 have announced three Wessex live dates to coincide with the September release of *MetroKino*, their fifth release for the Spinout Nuggets label.

The album features eleven original tracks, inspired by Fritz Lang's 1927 expressionist classic *Metropolis*, and reflecting many of the film's themes, several of which still ring true in 2025.

Expect a riot of 'live' instrumentation, retro flair and a whole new dimension, inspired by one of cinema's most influential works. Strap in for a theremin, vocoder, retro synth ride, blended with the twang of 1960s-tinged sci-fi surf. Think B-52s meets Blade Runner.

27 September: Creative Innovation Centre, Paul Street, TAUNTON, TA1 3PF. 7.30pm. £19 / £16. 01823 337477 / creativeinnovationcentre.co.uk.

10 October: Bridport Arts Centre, 9 South Street, BRIDPORT, DT6 3NR. 7.30pm. £15. bridport-arts.com.

11 October: The Cube Microplex, Dove Street South, Kingsdown, BRISTOL, BS2 8JD. 7.30pm. £10. cubecinema.com.

Diary Dates



CONSONE QUARTET

RWA 172 ANNUAL OPEN
6 September - 28 December
rwa.org.uk

HOPE BOURNE: 'A LIFE OUTSIDE'
27 September - 10 January
swheritage.org.uk

THE DORSET OPEN 2025
18 October - 30 November
dorsetmuseum.org

'ARTIST AS WITNESS'
25 October - 8 March
russell.cotes.com

EAST HARPTREE BIG ARTS WEEKEND
8 - 9 November
artshubharptree.com

CONSONE QUARTET
28 and 29 November
concertsinthewest.org

KRIS DREVER
12 November
poundarts.org.uk

'TWO MANY GREEK MYTHS'
14 and 15 November
wiltshirecreative.co.uk

DORSET ART WEEKS 2026
23 May - 7 June
dorsetvisualarts.org

Autumn Exhibitions

Jack Archer: A Life in Ink
29 August - 14 September

The South West Textile Group
19 September - 18 October

Naomi Joy: Love the Unloved
23 October - 3 November

The Pound Arts Centre, Corsham, Wiltshire, SN13 9HX
(01249) 701628 | poundarts.org.uk | @poundarts

Visual Arts

September and October 2025



NORMA WALTON

Devon Open Studios

During Devon Open Studios, artists across the county will be inviting people into their studios and exhibition spaces. The event is an opportunity to meet the artists, hear about their inspiration and see how they work.

Artists and makers will be demonstrating and showcasing their work in attics, sheds, galleries and other creative spaces. The art and craft on display will include jewellery, sculpture, printing, drawing, painting, ceramics, glass and handmade paper.

In Exeter, Members and Friends of Double Elephant Print Workshop will be showing their work at Positive Light Projects on Sidwell Street. Visitors will be able to see all forms of printmaking, and there will be demonstrations and workshops to take part in.

Lynn Bailey has a small printmaking studio in Exeter. She is inspired by nature - bugs, hedgerows and even weeds, and gathers a wide variety of natural materials which leave traces embedded in her artwork.

Beth Osment is also inspired by nature. In her Exeter studio, she will be meeting visitors and talking to them about her nature-inspired quilts, which aim to create a sense of calm.

Devon Artist Network has partnered with the Thelma Hulbert Gallery and The Beehive Community Centre in Honiton to showcase eight exciting up-and-coming artists.

Three artists will be displaying their work at The Beehive. Louise Hutton is an abstract artist whose paintings are influenced by the motifs in her dreams and her love of being with trees and by the sea. Gary Winters works with a variety of media, including oil pastel on found paper images taken from 1950s and 1960s movie review books of pin-ups and stars of the day. Norma Walton's mixed media and collage is inspired by the Devon landscape and the colours changing with the seasons.

Kat Blockley has been inspired by an archive of newspaper cuttings which she has been collecting since the 1990s. She stitches words and images selected from the cuttings, inspired by stitched samples of the past. Kat's work will be at Thelma Hulbert Gallery, alongside Philippa Mills' delicate illustrations and Sarah Burt's prints inspired by the landscape and architecture of Devon. Through her mixed media work, Gill Melling invites people to think about how we exist as part of a living system. Francesca Elliot uses a 1940s analogue camera to capture her natural surroundings.

More information is available at devonartistnetwork.co.uk, and a free guide is available in information centres.

Gillian Taylor

DEVON OPEN STUDIOS

6 - 21 September: Locations throughout DEVON. devonartistnetwork.co.uk.



OCTAVIA MADDEN



SIDDY LANGLEY



MIKE THOMPSON

Visual Arts

'SUMMER EXHIBITION'

Until 5 September

Hatch Gallery, 7a Church Street,
CHRISTCHURCH, BH23 1BW.
Tuesday - Saturday 11am - 4pm.
07787 517958 / hatchgallery.co.uk.

'WORKSHOPS SHOWCASE'

Until 5 September

Ilminster Arts Centre, The Meeting
House, East Street, ILMINSTER, TA19
0AN. Tuesday - Saturday 9.30am -
3pm. ilminsterartscentre.com.

JULIA ATKINSON:

'INTERCHANGE'

Until 6 September

Young Gallery, Salisbury Library,
Market Walk, SALISBURY, SP1 1BL.
10am - 5pm.
younggalleriesalisbury.org.uk.



LINDSEY BULL: 'CANDYFLOSS'

Until 6 September

Bo Lee and Workman, West End,
BRUTON, BA10 0BH. Wednesday -
Saturday 10am - 5pm. 07789
743832 / boleeworkman.com.

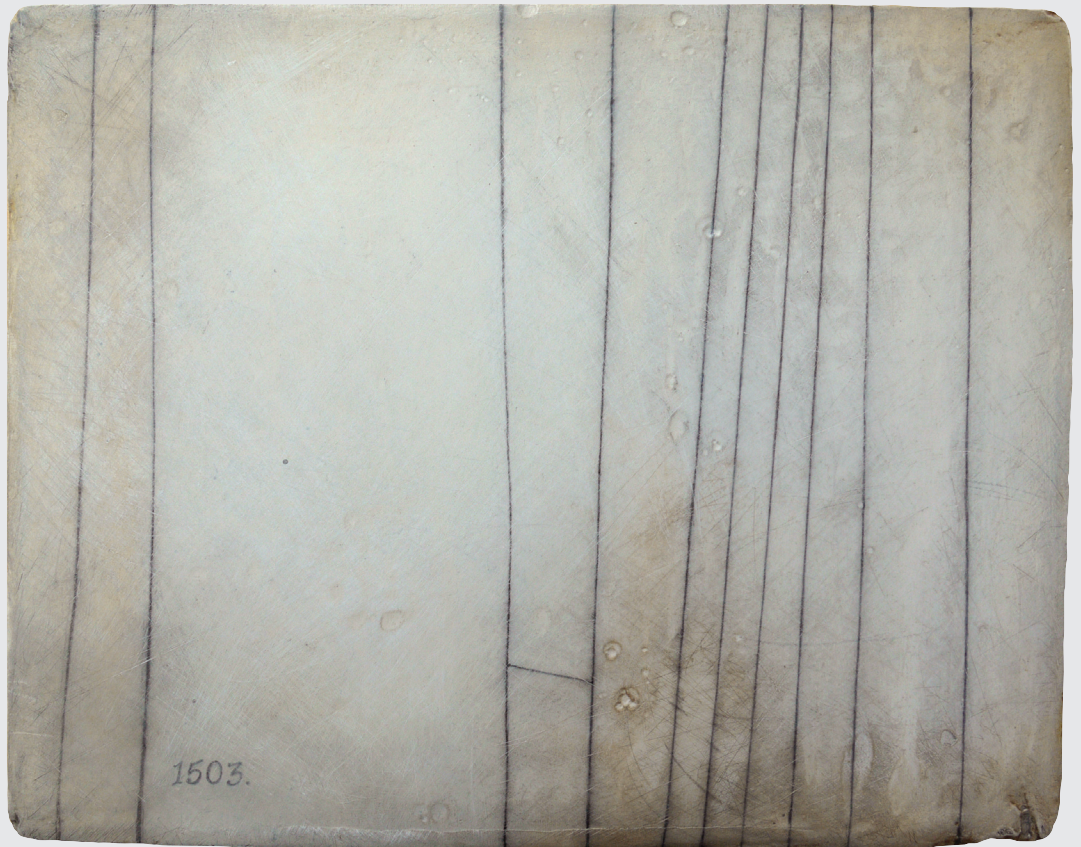
*"These vibrant, fluid paintings
contain a lightness and softness that
emphasises the capturing of a
moment, the candidness of being
seen whilst caught in reflection, out
of role."*

Above: 'Candyfloss' (2025)

'RECURRING INTRICACIES'

Until 7 September

The Sherborne, Newlands,
SHERBORNE, DT9 3JG. Monday -
Saturday 10am - 4pm, Sunday 10am
- 4pm. thesherborne.uk.



AMANDA WALLWORK 'LOST FIELD 1503, FURLONG, ARABLE'
(Oil, graphite and plaster on board, 25 x 31 cm)

Amanda Wallwork and Christopher Stocks: This Beguiling Isle

"Part of this year's b-side Fringe, this collaborative exhibition between artist Amanda Wallwork and writer Christopher Stocks, presented in a former chapel on Portland, celebrates Portland's unique character, history and geology. Amanda Wallwork's paintings, *The Lost Fields of Portland*, were inspired by a hand-drawn map of the island, made in 1841 when Portland was still mainly pastureland, which records the often poetic names of hundreds of fields now long lost to quarrying. Amanda will also be showing a selection of her tactile Portland 'geospheres' and geological specimen collections. Christopher Stocks is a journalist and author of four books, including *The Book of Pebbles*, published by Thames & Hudson, with illustrations by the artist Angie Lewin. Born in Yorkshire, he has lived on Portland for the last 25 years, and has won a Bridport Prize for his poetry. His poems for *This Beguiling Isle* respond to Amanda's work, and also take an affectionate look at his adoptive home."

11 - 13 September: Ranters Lodge, Pebble Lane, Chiswell, PORTLAND, DT5 1AW. 2 - 5pm.
07816 224015 / amandawallwork.com / christopherstocks.com.



Above: Marzia Colonna A Day Last Summer
90 x 90cm collage. Right: Sally McLaren
Garden 1 68 x 66.5cm hand-coloured print

as dreams are made on
MARZIA COLONNA MRBS collages
FIAMMA COLONNA MONTAGU sculpture
Saturday 20 September - Saturday 8 November

SLADERS' SUMMER PRINT SHOW til 13 Sept
JULIAN BAILEY • MICHAEL FAIRCLOUGH
MARTYN BREWSTER • MERLYN CHESTERMAN
SALLY McLAREN • HOWARD PHIPPS
BJÖRK HARALDSDÓTTIR solo ceramics show
PETER SOUTHALL furniture

SLADERS YARD

Contemporary Art & Craft Gallery West Bay DT6 4EL @sladersyard
01308 459511 Open Weds - Sat 10am - 4pm sladersyard.co.uk



CAFÉ SLADERS
Lunch Weds - Saturday / Dinner Saturdays
Local ingredients cooked to perfection!

Walford Mill Crafts

The creative home for designer makers in Dorset



Come and visit Walford Mill Crafts and you'll find inspiring exhibitions, pop-ups for up and coming makers along with our creative on-site makers in their open studios.

Book the kids on a children's art class or treat yourself to a creative workshop. We also hold Courtyard Craft Markets every second Saturday in the month starting from March.

Don't forget to enjoy a delicious lunch at the Little Pickle Cafe while you visit.



www.walfordmillcrafts.co.uk

Knobcrook Road, Wimborne BH21 1NL - Registered Charity No. 1049540

Affordable studio spaces available, contact: admin@walfordmillcrafts.co.uk



Come and join our friendly Art Community in Sherborne

- EXPERIENCED TUTORS
- INSPIRING STUDIOS, WELCOMING ENVIRONMENT
- VARIED WORKSHOPS / PART-TIME COURSES FROM HALF DAY TO 34 WEEKS
- ALL ABILITIES WELCOME
- CITY & GUILDS LEVEL 2 QUALIFICATIONS IN ART & DESIGN, TEXTILES, INTERIOR DESIGN
- DROP-IN SESSIONS



For more information, please give us a call, pop in and see us, email or visit our website.

07549 357138 / 07917 190309

southwestartcourses.co.uk

Email admin@southwestartcourses.co.uk

Compton Studios, Compton Court
Coldharbour, Sherborne, DT9 4AG

ARTSOUNDLIVEARTFILM

b-side 2025

A vibrant Summer long celebration of culture on the captivating Isle of Portland. Join in an exciting programme of events in some incredible places.

DON'T MISS
The b-side BIG weekend!

11-14 September

Be a part of this unforgettable journey!

ONE ISLAND, 1000 STORIES

b-side.org.uk



b-side BIG Weekend presents LUKE WRIGHT Pub Grub

7.45pm Saturday 13 Sept
Royal Manor Theatre, Portland, Dorset

Tickets £15

ON SALE NOW

"A streetwise panache and a sardonic comic verve to rival Stewart Lee."
★★★★★ Telegraph

"A winning combination of honesty, humour, fire and wonder. He is at the peak of his powers." ★★★★★ The Stage

"Britain's finest performance poet." ★★★★★ Life As Theatre

b-side.org.uk



Supported using public funding by
**ARTS COUNCIL
ENGLAND**



Visual Arts

'TAKE 3 ARTISTS'

Until 9 September

The Gallery, Shaftesbury Arts Centre, Bell Street, SHAFTESBURY, SP7 8AR. Monday - Saturday 10am - 4pm. shaftesburyartscentre.org.uk.

"Exciting mix of work by Joan Scott, Barbara Davis, and Dick Hewitson."

SLADERS' SUMMER PRINT SHOW

Until 13 September

Sladers Yard, WEST BAY, Bridport, DT6 4EL. Wednesday - Saturday 10am - 4.30pm. 01308 459511 / sladersyard.co.uk. "Original woodcuts, wood engravings, aquatint, carborundum and drypoint prints by Julian Bailey, Martyn Brewster, Merlyn Chesterman, Michael Fairclough, Sally McLaren, and Howard Phipps, alongside ceramics by Björk Haraldsdóttir and furniture by Petter Southall."

'SERIOUSLY...'

Until 13 September

Museum & Art Swindon, Euclid Street, SWINDON, SN1 2JH. Tuesday - Saturday 10.30am - 4.30pm. 01793 466556 / museumartswindon.com.

'MAKE IT SUMMER 25'

Until 14 September

Sou'-Sou'-West Gallery, Manor Yard, Symonds Estate, SYMONDSBURY, Bridport, DT6 6HG. 10.30am - 4.30pm. 01308 301326 / sousouwest.co.uk. "A summer pop-up for local creatives featuring a wide variety of work by local makers."

JACK ARCHER: 'A LIFE IN INK'

Until 14 September

Pound Arts, Pound Pill, CORSHAM, SN13 9HX. Monday - Saturday 10am - 9.30pm. poundarts.org.uk. "Jack's artistic journey began in the 1950s as a technical illustrator. This show includes working drawings, prints and paintings that reflect Jack's love of design and history."

'REGGAE BRIDPORT'

Until 16 September

Bridport Arts Centre, 9 South Street, BRIDPORT, DT6 3NR. Tuesday - Saturday 10am - 4pm. bridport-arts.com. "Exhibition of photographs by Adrian Boot exploring the world of reggae - from its origins, through its evolution to its icons."



MAXINE FOSTER 'STORM'

Reflect: Uncommon Ground

"This exhibition highlights the potential of print. Inspired by the environment, nature, and contemporary technology, each artist responds in their own personal way to the political, identity and climate issues with which we are faced on a daily basis. Figurative or abstract, the artists - Catherine Cartwright, Maxine Foster, Tallulah Foster, Julie Leach, Hilary Paynter, Christopher Pig, and Sandra Porter - explore and combine multiple print processes including wood engraving, intaglio, monotype, linocut, etching and screenprint."

20 September - 18 October: Long Gallery, Black Swan Arts, 2 Bridge Street, FROME, BA11 1BB. Monday - Sunday 10am - 4pm. blackswanarts.org.uk.



FERNANDO VELAZQUEZ: 'FLIGHT TO ADES'

Until 19 September

The Corn Exchange, High East Street, DORCHESTER, DT1 1HF. Tuesday - Saturday 10am - 4pm. dorchesterarts.org.uk. "Through the interplay of form, movement, and atmosphere, Spanish artist Fernando Velazquez invites us to enter a new territory where the echoes of the past merge with a new language in painting."

Above: 'Flight to Ades' (Oil on canvas, 145 x 155 cm)

FRANCES HATCH: 'ELEMENTS'

Until 20 September

White Chalk Gallery, 5 Old Swan Yard, DEVIZES, SN10 1AT. Thursday - Saturday 10am - 5pm. 07398 970439. "Frances responds to the landscape she visits, inviting it to participate in a conversation with the blank page in front of her."

AJAMU X: 'FIERCE: BRISTOL'

Until 21 September

Martin Parr Foundation, 316 Paintworks, BRISTOL, BS4 3AR. Thursday - Sunday 10am - 5pm. martinparrfoundation.org. "Ten new portraits that both celebrate and map the contributions of black lesbian, gay, bisexual, trans, and queer individuals."

DANA AWARTANI: 'STANDING BY THE RUINS'

Until 28 September

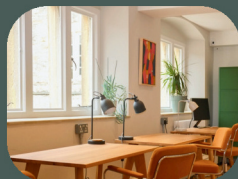
Arnolfini, 16 Narrow Quay, BRISTOL, BS1 4QA. Tuesday - Sunday 11am - 6pm. arnolfini.org.uk. "Dana Awartani explores cultural heritage, loss and healing, using traditional crafts and collaborative practice to bridge the ancient and contemporary world."

Distil
COWORKING
Somerset

Be inspired by a workspace filled with natural light and rotating exhibitions by local artists.



at Kilver Court & Gardens



distilcoworkingsomerset.co.uk

POTTERY CLASSES

CRAFT • LEARN SKILLS • FEEL GOOD



- Taster sessions
- Experience days
- Weekend retreats
- Private tuition

moonstudioceramics.co.uk

Hawthorn Farm Buildings
Christchurch, Dorset, BH23 7AB

Visual Arts

SAHARA LONGE: 'THE OTHER SIDE OF THE MOUNTAIN'

Until 28 September

Arnolfini, 16 Narrow Quay, BRISTOL, BS1 4QA. Tuesday - Sunday 11am - 6pm. arnolfini.org.uk. "Sahara Longe captures the fleeting moments of life, employing literary and cinematic devices to create a space where our past, present and future selves can coexist and converse."

ELISABETH FRINK: 'A VIEW FROM WITHIN'

Until 28 September

The Salisbury Museum, The Kings House, 65 The Close, SALISBURY, SP1 2EN. 10am - 5pm. 01722 332151 / salisburymuseum.org.uk. "The artistic and personal life of esteemed sculptor and artist Dame Elisabeth Frink are featured in this major exhibition. Sculptures, drawings and original prints explore the artistic processes and influences that shaped her life and work."

MAY MORRIS: 'ART & ADVOCACY'

Until 5 October

Russell-Cotes Art Gallery & Museum, East Cliff, BOURNEMOUTH, BH1 3AA. Tuesday - Sunday 10am - 5pm. £9.50 / £5. 01202 128000 / russellcotes.com. See page 5.



'WARPED AND WASTED'

Until 11 October

ACE Arts, Market Place, SOMERTON, TA11 7NB. Tuesday 11am - 5pm, Wednesday - Saturday 10am - 5pm. acearts.co.uk. "Through research, design and production, the members of Seam Collective unveil visionary ideas for the future, inviting visitors to immerse themselves in their diverse approaches to making."

Above: Lydia Needle

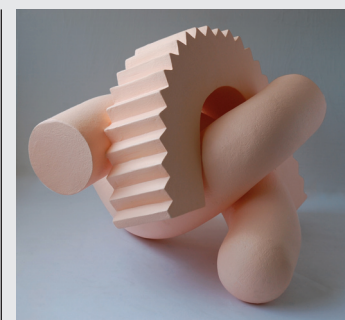


ALICE SHEPPARD FIDLER 'HUNDREDS AND THOUSANDS' (2025)

One Island, Many Visions

"One Island, Many Visions is a curated exhibition of research and site responses by 25 sculptors from the Royal Society of Sculptors in collaboration with Portland Sculpture Quarry Trust. The title of the show reflects the unique nature of Portland and its ability to engage diverse responses by artists to its landscape and features. Participating artists include leading international names and emerging contemporary talents. The project represents a fresh artist response to this now SSI (Site of Special Scientific Interest) since the inaugural sculptors Antony Gormley, Philip King, Phyllida Barlow, and Richard Long were involved with the conservation of Tout Quarry."

6 September - 31 October: Portland Sculpture & Quarry Trust, Drill Hall Gallery, Easton Street, PORTLAND, DT5 1BW + Tout Quarry Sculpture Park & Nature Reserve, PORTLAND, DT5 2LN. Thursday - Sunday 11am - 4pm (Tout Quarry open all hours). 07413 644866.



'THE MIXTAPE'

Until 18 October

The Vanner Gallery, 45 High Street, SALISBURY, SP1 2PB. Tuesday - Saturday 10am - 5pm. vannergallery.com. Painting, printmaking, sculpture, ceramics and photography.

Above: Patricia Volk

'MUCHELNEY POTTERY: CELEBRATING 60 YEARS'

Until 25 October

Muchelney Pottery, MUCHELNEY, near Langport, TA10 0DW. Monday - Saturday 10am - 1pm and 2 - 4pm. johnleachpottery.co.uk. "Commemorative exhibition celebrating 60 years."

'COASTAL THREADS'

Until 31 October

Fairlynch Museum, 27 Fore Street, BUDLEIGH SALTERTON, EX9 6NP. Tuesday - Sunday 2 - 4.30pm. £2.50. 07887 459672. "Fabric pictures."

JACK ARCHER: 'A LIFE IN INK'

29 August - 14 September

The Pound Arts Centre, Pound Pill, CORSHAM, SN13 9HX. Monday - Saturday 10am - 9.30pm. 01249 701628 / poundarts.org.uk. "Jack's creative journey spans aircraft design, military publications, and post-retirement pursuits in calligraphy, poetry, and illustrating books for grandchildren."

LOUISE AUBREY: 'ECLIPSE'

29 August - 14 September

The Pound Arts Centre, Pound Pill, CORSHAM, SN13 9HX. Monday - Saturday 10am - 9.30pm. 01249 701628 / poundarts.org.uk. "Bath Spa graduate Louise crafts joyful, sculptural furniture."

Still Southern - Still Contemporary

Southern Contemporaries is a 'sister' group within the Bournemouth Arts Club, established in 2001 to reach venues and artists outside the town.

Now relaunched with a brand-new logo, it is very much still here. Still Southern - our members live from Sherborne to Lymington and everywhere in between.

And still Contemporary - showcasing the very best in local painting, printmaking, sculpture and more.

Look out for a Southern Contemporaries exhibition near you soon.

Simon Merry 'Falling' (acrylic on board)



southern
CONTEMPORARIES
Bournemouth Arts Club

bournemouthartsclub.co.uk

**EAST
QUAY**



DOWN THE HATCH

13.09.2025 - 04.01.2026

Jo Lathwood

@eastquaywatchet
eastquaywatchet.co.uk
Open daily 10am-5pm



Supported using public funding by
**ARTS COUNCIL
ENGLAND**



Brian Rice

Found Object Constructions

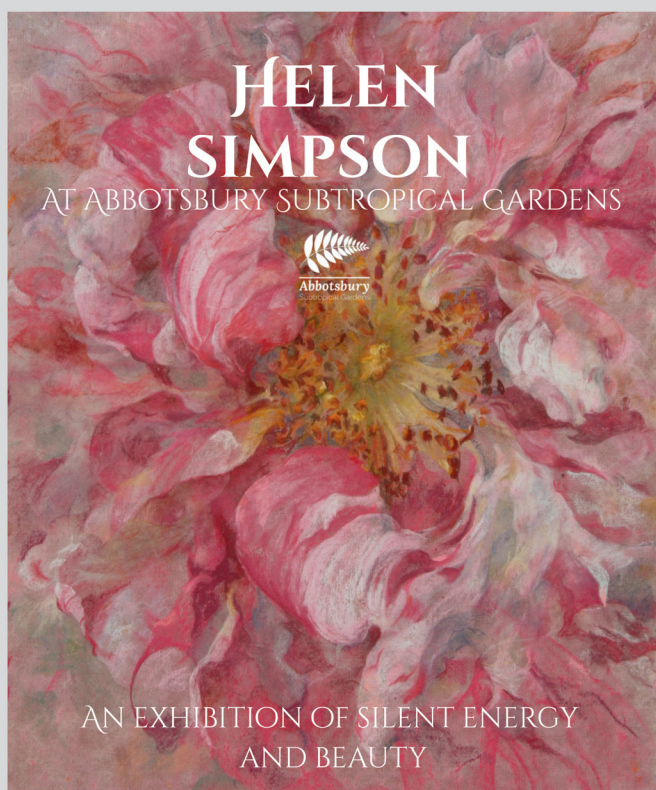
2000 - 2025

18th September - 1st November 2025

Wednesday - Saturday 10am - 5pm

THE VIEWING ROOM

13 Fore Street, Castle Cary, Somerset BA7 7BG
georgiastoneman.com • 01963 202030



AN EXHIBITION OF SILENT ENERGY
AND BEAUTY

**ENTRY TO CAFE GALLERY FREE
UNTIL 31ST OCTOBER 2025**

Floral art work by Dorset based artist Helen Simpson.
Soft, serene and full of life.

helensimpsonartist.co.uk



SWAc

South West Academy of Fine and Applied Arts

OPEN EXHIBITION 2025 CALL FOR ENTRIES

SWAc 26th Annual Open Exhibition

2D and 3D work welcomed

ENTRY DEADLINE: MIDNIGHT, 17 SEPTEMBER

Exhibition dates: 28 October - 8 November

Kennaway House, Sidmouth, Devon EX10 8NG

Enter online via: southwestacademy.org.uk

Artwork images from Open Exhibition 2024

Sou'-Sou'-West

01 - 14 Sep

TWO/Jan Dean & Matthew Pearce +

*workshop

20 - 21 Sep

*POP UP / Demonstrations

25 Sep - 14 Oct

*Print Making & Sculpture / open

13 Sep - 05 Oct

Expressions /
Bridport Art Society

11 Oct - 09 Nov

Selected

18 Oct - 09 Nov

Steve Manning & Guests

14 Nov - 02 Dec

Winter 2025 / open

Art Fairs

Spaces still available,
please enquire

05 - 08 Dec / Gifted

19 - 22 Dec / All wrapped up

**See website or call for details*

Free Parking • Cafe • Walking • Shopping

Daily: **10:30 - 16:30**

Unit 4&6 Manor Yard

Symondsburys Estate

Bridport DT6 6HG

T. **01308 301 326**

@ **sousouwestgallery**

sousouwest.co.uk



Flight to Adès
Fernando Velazquez



Tuesday 8 July - Friday
19 September

Ungrievable
Lives



Saturday 18 - Monday
20 October

Of Land And
Sea



Tuesday 11 November
- Saturday 3 January

DorchesterArts

01305 266926 | dorchesterarts.org.uk



Boilerhouse Gallery

Contemporary Art and Craft
in the heart of Purbeck

Open Wednesday to Sunday 10am - 5pm

Sandy Hill Lane, Corfe Castle BH20 5JF

07398 052489 • boilerhousegallery.co.uk



EVOLVER magazine

SUBSCRIBE NOW! 6 issues for £30

Visual Arts

SUE GUNN: 'TRANSFORMATIONS'

2 - 13 September

Taunton Library, Paul Street,
TAUNTON, TA1 3XZ. 9am - 5pm.
07821 697591.

'TWO'

2 - 14 September

Sou'-Sou'-West Gallery, Manor Yard,
Symonds Estate,
SYMONDSBURY, Bridport, DT6 6HG.
10.30am - 4.30pm. 01308 301326 /
sousouwest.co.uk. *Paintings by Jan
Dean and Matthew Pearce.*



TOM MARSHALL: 'HENGISTBURY HEAD: PEOPLE, PLACE, BIRDS'

2 - 29 September

Hengistbury Head Visitor Centre,
Hengistbury Head Nature Reserve,
BOURNEMOUTH, BH6 4EW. 10am -
4pm. visithengistburyhead.co.uk.
Drawing, painting and printmaking.



TIGGY RAWLING: 'SECOND RETROSPECTIVE'

3 - 14 September

Walford Mill, Knobcrook Road,
WIMBORNE, BH21 1NL. Wednesday
- Saturday 10am - 5pm, Sunday
11am - 4pm. walfordmillcrafts.co.uk.



Luke Jerram: Gaia

"Gaia is a touring artwork by UK artist Luke Jerram. Measuring seven metres in diameter and created from 120dpi detailed NASA imagery of the Earth's surface the artwork provides the opportunity to see our planet, floating in three dimensions. When presented indoors, the Earth artwork slowly revolves. A specially made surround sound composition by BAFTA award winning Composer Dan Jones is played alongside the sculpture. In Greek Mythology Gaia is the personification of the Earth. The artwork is 1.8 million times smaller than the real Earth with each centimetre of the internally lit sculpture describing 18km of the Earth's surface. By standing 211m away from the artwork, the public will be able to see the Earth as it appears from the moon."

29 August - 12 September: Sherborne Abbey, Abbey Close, SHERBORNE, DT9 3LQ. Monday - Saturday 8am - 5pm, Sunday 11am - 5pm. 01935 812807 / sherborne-tc.gov.uk.

'ARTBEAT'

5 - 14 September

Kennaway House, Coburg Road,
SIDMOUTH, EX10 8NG. 10am - 5pm.
07770 809571. *"Paintings, prints,
sculpture, crafts and cards by local
artists."*

'FIFTY BEES'

5 - 14 September

No. 6 Bruton High Street, BRUTON,
BA10 0AA. Friday - Sunday 10am -
5pm. lydianeelneedle.com.
"Collaborative multi-disciplinary

*project led by artist Lydia Needle that
combines visual art, education, and
environmental engagement."*

RED BRICK ARTISANS

5 - 30 September

Red Brick Artisan Studios, Red Brick
Building, Morlands Road,
GLASTONBURY, BA6 9FT. Monday
9am - 5pm, Tuesday - Thursday 9am
- 11pm, Friday and Saturday 9am -
1am, Sunday 10am - 5pm. 01458
899564. *"Exhibition and open
studios."*

BULL MILL STUDIO 'FIRST SATURDAY'

6 September

Bull Mill Studio, Bull Lane,
CROCKERTON, Warminster, BA12
8AY. 10am - 5pm. 07730 400784.
*"Monthly open studio exhibition
featuring contemporary landscape
paintings and drawings by Nick
Andrew, wildlife art on reclaimed
wood by Tanya Hinton, jewellery by
Stephanie Gilbert, and baskets by
Maria Monteiro."*

seam collective

WARPED AND WASTED

23 August – 11 October



Market Place, Somerton, Somerset TA11 7NB • Tuesday 11am - 5pm, Wednesday - Saturday 10am - 5pm • 01458 273008 • acearts.co.uk



MICHAEL SUTHERLAND 'CLIFTON SUSPENSION BRIDGE' (75 x 153 cm)

Peacock Arts Trail

"Corsham based painter Michael Sutherland who was a 'wild card' entry to 2025's Sky Arts *Landscape Artist Of The Year*, is one of the artists taking part in North Wiltshire's Peacock Arts Trail. This year's free open studios event takes place from Saturday 4th to Sunday 12th October, and promises to be another fantastic celebration of local artistic talent! From pottery, painting, textiles, sculpture and much more, The Peacock Arts Trail is the place to visit for the best of North Wiltshire's artists and makers. The trail starts in Corsham and reaches out to Chippenham, Box, Melksham, Holt, Atworth, Kington Langley and many other villages. It's a great way to get 'off the beaten track' and discover some truly unique locations."

peacockartstrail.co.uk

10 PARISHES FESTIVAL

6 - 14 September

Various locations in and around WIVELISCOMBE.

10parishesfestival.org.uk. "Festival of visual and performing arts."

ROMI BEHRENS:

'RETROSPECTIVE'

6 - 27 September

David Simon Contemporary, 37 High Street, CASTLE CARY, BA7 7AW.

Monday, Tuesday, Wednesday - Saturday 10am - 5.30pm.

davidsimoncontemporary.com.

"Romi Behrens (1939 - 2019) was a multi-talented creative person, she was a visual artist, a violinist and a life long member of the Newlyn Society of Artists."

172 ANNUAL OPEN EXHIBITION

6 September - 28 December

RWA, Queen's Road, Clifton, BRISTOL, BS8 1PX. Tuesday - Sunday

10am - 5pm. £9.90 / £5.45. 0117 973 5129 / rwa.org.uk. "This highly anticipated exhibition provides a platform for emerging and established artists to exhibit their work in the RWA's stunning galleries."

ACADEMICIAN CANDIDATES

2025

6 September - 26 October

RWA, Queen's Road, Clifton, BRISTOL, BS8 1PX. Tuesday - Sunday

10am - 5pm. 0117 973 5129 / rwa.org.uk. "Showcase of works by this year's Academician candidates."

'AUTUMN 2025'

6 September - 4 January

Tincleton Gallery, The Old School House, TINCLETON, near

Dorchester, DT2 8QR. Saturday and Sunday 10am - 4pm. 01305 848909.

"Mixed exhibition by gallery and guest artists."

ROGER ROWLEY: 'QUIET

CONTEMPLATIONS'

9 September - 3 October

Ilminster Arts Centre, The Meeting House, East Street, ILMINSTER, TA19

0AN. Tuesday - Saturday 9.30am - 3pm. ilminsterartscentre.com. "This show emphasises the contemplative nature of Roger's artistic process, where repetition allows objects to evolve in meaning over time."



PAUL NEWMAN: 'CANOPY TALES'

9 September - 3 October

Ilminster Arts Centre, The Meeting House, East Street, ILMINSTER, TA19

0AN. Tuesday - Saturday 9.30am - 3pm. ilminsterartscentre.com.

"Derived from an ongoing fascination with observation, mark-making and being in 'nature', 30 birds will populate the café gallery."

Above: 'Jackdaw'

DORSET ROMANTICS: 'COMMON GROUND AND WAVES'

10 - 23 September

The Gallery, Shaftesbury Arts Centre, Bell Street, SHAFTESBURY, SP7 8AR.

Monday - Saturday 10am - 4pm. shaftesburyartscentre.org.uk.

JINDRA JEHU: 'PRECARIOUS BODIES'

10 September - 1 November

Mowlem Theatre, Shore Road, SWANAGE, BH19 1DD. Monday,

Wednesday, Friday and Saturday 11am - 1.30pm, Monday - Saturday 6

- 9.30pm. 01929 422239 /

themowlem.com. "Drawings and sculptural forms speak of the interconnected of all things."

'THE PORTLAND DRESS'

11 - 14 September

Old Engine Shed, Incline Road, Grove, PORTLAND, DT5 1DB. 11am -

6pm. 01305 568044 / b-side.org.uk.

"Inspired by 'The Red Dress' visit to Portland in 2024, a sister dress has been slowly and gently collecting the stories of Portland."

KEVIN CAMERON: 'EXCESS BAGGAGE'

11 - 14 September

High Angle Battery, New Ground, PORTLAND, DT5 1LF. 11am - 6pm.

01305 568044 / b-side.org.uk.

"Video and sound installation."

Boscombe Radicle Arts Collective presents

WE RISE

GROUP EXHIBITION

SELECTION OF GLOBAL MAJORITY ARTISTS FROM DORSET AND BEYOND CURATED BY SHARON JAMES

Saturday 20th September - Saturday 1st November

OPENING EVENT: Saturday 20th September, 2 - 5pm, all welcome

Opening times: Monday 10am - 5pm, Tuesday to Saturday 10am - 8pm

FREE ENTRY

Lighthouse, 21 Kingland Road, Poole, Dorset BH15 1UG



lighthouse
Arts & Entertainment | Poole



TEXTILE TALKS

Textiles, sustainability
and collaboration
Be part of the conversation

seam collective

Image: Angie Parker

Friday 3rd October, 10am - 4pm
Tickets on sale now from theloomshed.com
Somerton Parish Rooms + ACE Arts
Market Place, Somerton, Somerset TA11 7NB

we accept the
National
Art Pass

Athelhampton
HOUSE & GARDENS



**Gordon Rushmer
at Athelhampton**
**EVERY PICTURE
TELLS A STORY**

An exhibition of paintings and watercolours in the East-Wing Gallery at Athelhampton House. Gordon has works in major government collections and museums both in Britain and abroad. Along with being a renowned landscape painter he worked as a war artist alongside British and Dutch Royal Marines and Special Forces.
**September 10th 2025
to March 7th 2026**



**One of England's
finest Tudor Manor Houses,
surrounded by award-winning gardens**

**HISTORIC
HOUSES**

Easily found, just off the A35 Puddletown bypass, five miles east of Dorchester.
Athelhampton House, Dorchester, Dorset DT2 7LG www.athelhampton.co.uk



Exhibit A

Artists and photographers are invited to submit work for next issue's page 3 Exhibit A by emailing images to: simon@evolver.org.uk



JULIA MANNING
BARGAIN WEEKEND SALE
12 - 14 SEPTEMBER
2 ROSEBANK, QUEEN STREET,
KEINTON MANDEVILLE, TA11 6EQ
10am to 5pm on all 3 days
07842 423987 / juliamanning.co.uk
PRIOR TO BEING MORE RETIRED, BARGAIN SALE OF MY
PRINTS, INCLUDING DECLINE OF EELS AND PINE FERODAS!
PLUS PAUL'S POTS, CURIOUS GARDEN AND YARDS.

**NEGATIVE
Thinking**
The Home of Analogue Photography in Bristol

**Weekend Workshops
Evening Courses
Unique Portraits**



www.negative-thinking.co.uk
Willway Yard, Bedminster, Bristol, BS3 4BG



Bridport Arts Centre

Sep - Dec 2025

Highlights include
The Poor Man's Friend revisited
Indie-rock band Leonian Dream
Shakespeare's Julius Caesar

Too Much: Melodrama on Film
Folk horror classic Penda's Fen
Christmas at BAC

 bridport-arts.com

 ARTS COUNCIL
ENGLAND  BRIDPORT
TOWN COUNCIL  Dorset
Council



'COAL IN THE SOUL'

Jonny Hannah: The Darktown Department Store

Gillingham was, at one time, one of Dorset's most thriving working towns. It supplied fresh water to its local neighbours up the hill and manufactured and supplied its famous glass and bricks to a wide number of national customers. The town's prosperity was such it boasted no less than four department stores along its High Street for the working population. One of the buildings which housed a department store is still intact and has been home to The Slade Centre for nearly 25 years. Built by the Slade Brothers it has suffered several incarnations since; electrical appliance store, empty for a decade, accountants, restaurant, a bar to its current iteration as a contemporary art gallery. To celebrate the history of the building and of Gillingham itself, artist Jonny Hannah has been invited to employ his unique style to recreate the feeling of the buildings original purpose. With a wide range of objects, drawing, prints and even clothes Jonny has immersed himself into the history of the building and is converting it into something exciting, accessible and relevant. A dynamic, fun, respectful nod to our history delivered in a quirky, contemporary style.

Glen Innes

11 October - 15 November: The Slade Centre, GILLINGHAM, SP8 4AY. Tuesday - Friday 9.30am - 4pm, Saturday 9.30am - 2pm. thesladecentre.co.uk.

CONCRETE: 'MAS(S)'

11 - 14 September

High Angle Battery, New Ground, PORTLAND, DT5 1LF. 11am - 6pm. 01305 568044 / b-side.org.uk. "New sound art project exploring migration, refugees, war and loss through the human voice."

JULIA MANNING

12 - 14 September

2 Rosebank, Queen Street, KEINTON MANDEVILLE, TA11 6EQ. 10am - 5pm. juliamanning.co.uk. "Bargain weekend sale of prints."

'CLEAR SPOT'

12 - 14 September

Hours, 10 Colston Yard, BRISTOL, BS1 5BD. Friday 6 - 9pm, Saturday and Sunday 11am - 5pm. 07766 054659 / hours-space.com. Paintings by Megan Thimm and Ian Pillidge.

ART BARN OPEN STUDIOS

12 - 20 September

Sea View Farm, Ladram, OTTERTON, near Sidmouth, EX9 7BU. 11am - 5pm. 07970 554447 / seaviewartbarn.co.uk. "Phil Creek, Julie Dunster, Alison Summerfield, Frances Margaret-Carter, and Penny Silverthorne, five artists with very different styles, exhibit their work in large rustic barns by the sea."

'ART TO ART'

13 and 14 September

West Barn, Pound Lane, BRADFORD-ON-AVON, BA15 1LF. 10am - 4pm. 07811 102216.

FIONA HINGSTON: 'LOCAL ARTIST'

13 September - 4 October

Andelli Art, Mendip House, Upper Breach, SOUTH HORRINGTON, Wells, BA5 3QG. Wednesday - Saturday 10am - 5pm. 07790 030506 / andelliart.com. "Solo exhibition showcasing the unique artistic vision of Fiona Hingston."

BRIDPORT ART SOCIETY: EXPRESSIONS'

13 September - 5 October

Sou'-Sou'-West Gallery, Manor Yard, Symondsburry Estate, SYMONDSBURY, Bridport, DT6 6HG. 10.30am - 4.30pm. 01308 301326 / sousouwest.co.uk.



Marina Morris



ART and BEYOND
FRAME - PRINT - GALLERY

Wide range of frames and expert, friendly advice

Giclée prints from original art or photographs

Original art from local and national artists

1 Lynden Way, Beaminster, DT8 3AX
Tel: 01308 800693

Unit 3, 20 Market Street, Crewkerne, TA18 7LA
Tel: 01460 497589

email info@artandbeyond.co.uk



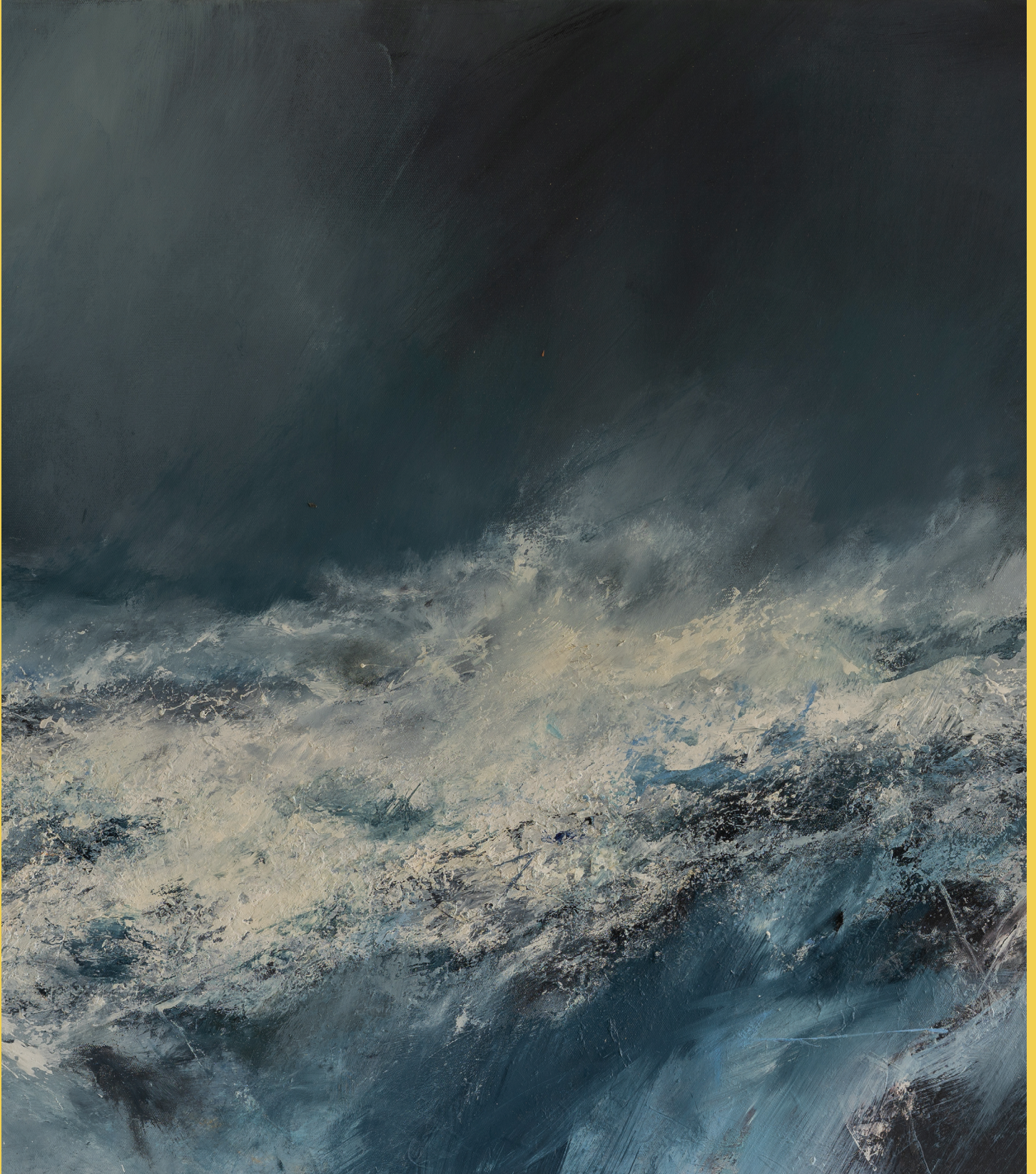


Sarah du Feu

Ceramics by Richard Longden, Stephanie Carlton, Tone von Krogh, Babs Kirby

SOMERSET **Open Studios**

13 - 28 September 2025



Evolver Magazine pull-out supplement

Somerset Open Studios 2025



ALASTAIR AND FLEUR MACKIE (VENUE 54)

It's that time of year again when artists in Somerset open their homes and studios to collectors and enthusiasts.

This year's brochure kicks off with family potter SIMON EELES (venue 1). Here you'll find work in stoneware, porcelain and demonstrations of the remarkable alchemy that is raku firing.

In Crewkerne you can find painter EMILY QUINCE (venue 7) in her new studio on the main road through the town.

New to Somerset, printmaker PAUL CLEDEN (venue 28) shows his fabulous prints, full of colour and movement.

In Castle Cary at Cockhill Studios (venue 45) Slade School alumni BIDDY PEPPIN shows her intriguing painted metaphors alongside WILL VAUGHAN's etchings and watercolours.

The superb SHAVE FARM ARTISTS (venue 52) are exhibiting for the first time without their founder ROWENA PEARCE, who died earlier this year. She was a true collaborative artist who embraced life, people and play. Kind and generous, she made Shave a sanctuary for many. Her work can still be seen at this artistic hub.



CHRISTINE-ANN RICHARDS (VENUE 139)

LUSTRE (venue 53) celebrates 30 years of SAW with a collaborative show with Art for Life at Musgrove Hospital. Art for Life is the Creative Health programme working throughout Somerset Hospitals providing a positive environment for staff, patients and their visitors. Here artists reflect on what creativity means to them and how it benefits their wellbeing.

MICHAEL TARR and PHILIP DUDMAN (venue 63) are two established artists showing figurative paintings inspired by the natural world, geometry and mundane objects.

JANE MOWAT (venue 73) in Waterrow works in natural wood for carving and printmaking. Inspired by figures and nature she also shows a selection of jewellery.

In Exmoor you'll find JOHN HAILSTONE (venue 77), showcasing his love of trees through the medium of photography, exposed in monochrome and colour on canvasses and as prints.

Earth, Pigment and Thread by JANE HOOD and EMMA LUMLEY (venue 78) is an exploration of the stories, energy, textures and patterns of landscape through the mediums of printmaking, pigments, textiles and clay.

In Watchet there is the fabulous cultural hub EAST QUAY (venue 90) hosting contemporary art galleries, print studio, artist and maker studios full of excellent established artists, a paper mill, a restaurant, places to stay and an evolving events programme.

Alongside is the ALBATROSS PRINT STUDIO (venue 91) with SUE LOWE's layered monotypes and richly-textured collagraph prints and SARAH WARD's bold, abstract multimedia works.

SUPPLEMENT COVER: JANETTE KERR 'SEA STATE FORCE 9 WAVES TOPPLING AND TUMBLING' (VENUE 143)

Janette Kerr HonRSA, PPRWA

Called 'the best painter of the sea in these islands' (Brian Fallon, Irish Times Chief Critic), Janette Kerr's paintings are about rhythms of sea and wind, advancing rain and mist.

janettekerr.co.uk

Somerset Open Studios Venue 143. Open 11am - 5pm. 13, 14, 19, 20, 21, 26, 27, 28 September

David A Parfitt RI

David Parfitt creates both representational and experimental images of the Somerset landscape in watercolour and monochromatic monoprint.

davidaparfitti.co.uk

In East Quantoxhead are two intriguing artists HAZEL BARRON and DUNCAN SALISBURY (venue 94). Hazel is a recent graduate working with foraged materials and cast glass, inspired by the connection between landscape and human frailty. Duncan works in both photography and ceramics and is inspired by deep connections to the coastline.

Bridgwater's newly refurbished Arts Centre (venue 103) hosts MARKO DUTKA's PhD photographic exhibition. The images of the Severn Estuary construct an immersive, visual language about a magical, multi-layered environment where everything is connected, infinitely variable and always in flux.

Also in Bridgwater is NATHAN SLATE ATELIER (venue 104). Nathan is an international artist now based in Somerset, with fashion collections worn by Rihanna and Lady Gaga. Working to a natural and sustainable ethic, he creates textiles using the rain and ceramics from local clay. His jewellery is designed using crystals and inspired by nature.

LILY SAWTELL (venue 112) looks at the alchemy between clay and kiln, testing her hand building skills. There are also drawings, sculptures and prints on show, all with a stunning Somerset view.

At Glastonbury's ZIG ZAG BUILDING (venue 114) you can find this year's Somerset Art Works Bursary Artists. The *Creative Pathways Bursary* is a professional development programme that aims to provide tailor-made support and a 'head-start' for early stage artists and makers. Each year SAW works closely with four new applicants to develop their practice through mentoring, peer guidance and financial support. A great venue to spot new and emerging talent.



RICHARD TURNER (VENUE 116)

HEART OF THE TRIBE GALLERY (venue 119) is another superb creative hub in Glastonbury. Here you'll be able to see artists at work and have the chance to have your portrait taken by award winning photographer KIM VON COELS. ELIZABETH RAEBURN and RODNEY LAWRENCE (venue 123) exhibit from their pottery established in 1976. Their work in raku and stoneware is represented in museums and collections worldwide, some sculptural, some useful, sometimes humorous.



The FREE GUIDE is available at arts and culture venues throughout Somerset and the surrounding counties

Award winning artist SHELLEY DYER-GIBBINS (venue 127) shows her blend of mixed media work using linocut, LEDs, spray paint, collage and acrylic to create a retro pop art twist.

DAVID A PARFITT and JANETTE KERR (venue 143) showcase encounters with land and sea. Searching out their place in the world, following trails and hunches, sometimes lost but always on the way. Their venue offers painting, print, drawing, sketchbooks and conversation.

As ever we have only been able to give you a tiny taste of what's on offer, but encourage you to get out and see as much as you can.

Suzy Rushbrook

somerseartworks.org.uk
[@somerseart_works](https://www.instagram.com/somerseart_works)

AFTER NATURE

Curated by Ben Tufnell

Aimee Parrott | Alastair and Fleur Mackie | Alex Hartley
Alexandra Daisy Ginsberg | Chris Drury | David Nash
Fred Sorrell | Lotte Scott | Magnus Hammick | Nissa Nishikawa
Onya McCausland | Richard Long | Simon Hitchens | Tania Kovats

13 Sept - 25 Oct 2025

closeitd.com

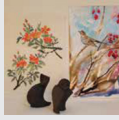
Close House
Hatch Beauchamp
Somerset, TA3 6AE

CLOSE

Somerset Open Studios 2025



1. Simon Eeles
Forde Abbey House and Gardens,
Chard, TA20 4LU. 07443 859454.
///travel.beams.publisher



2. Deborah Harris, Karen Hodgson, Suzy Nacour
24 Church Street, Winsham, Chard,
TA20 4JD.
///digestion.september.finer



3. Diana Jane
Threshers Barn, Hill Farm, South
Perrott, DT8 3HS. 07894 460224.
///riverbed.outcasts.unheated



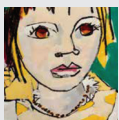
4. Rachael Presky and Dawn Walsh
The Studio, Manor Farmhouse, Middle
Street, Misterton, Crewkerne,
TA18 8LU. 07506 760521.
///repaying.fizzled.defeated



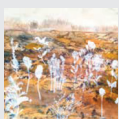
5. Liz West
Mill Bank Cottage, Hewish, Crewkerne,
TA18 8QX. 07539 978386.
///gratuity.joys.fast



6. Art and Beyond
Unit 3, Pollard House, 20 Market Street,
Crewkerne, TA18 7LA. 01460 497589.
///rules.prom.decorator



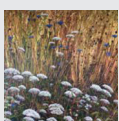
7. Emily Quince
4 Market Street, Crewkerne, TA18 7JY.
07483 232381.
///coconuts.butterfly.weekend



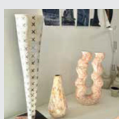
8. Jenny Mellings
Goldfinch Place, 19 East Street,
Crewkerne, TA18 7AG.
///salmon.changing.mavericks



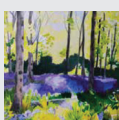
9. Robert Innes
The Grove, Poples Well, Crewkerne,
TA18 7ES.
///slimming.outcasts.hikes



10. Katie Brent
Woodbine Cottage, South Chard,
Chard, TA20 4QH.
///disengage.horseshoe.entertainer



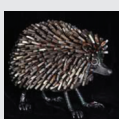
11. Derek Northfield and Gill Wright
Lucas Corner Studio, 2 Lucas Corner,
Frog Lane, Combe St Nicholas, Chard,
TA20 3HQ. 07713 113491.
///daydreams.soil.dash



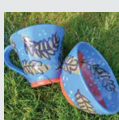
12. Caroline Croxson
The Cottage, Claycastle, Haselbury
Plucknett, TA18 7PB.
///code.funky.cheetah



13. Naomi Handy
3 Speke Close, Merriott, TA16 5PX.
///scatter.signed.lure



14. George Hider
Eggwood Farm, Bowood Lane,
Merriott, TA16 5QW. 01460 76100.
///chief.backtrack.informal



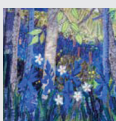
15. Christine Buckler
Glenalmond, Pottery Road, Horton,
Ilminster, TA19 9QN. 01460 258822.
///flip.assess.weddings



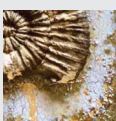
16. Kate Hetherington
The Annexe, Jordan's Courtyard,
Horton Cross, Ilminster, TA19 9PY.
07400 603145.
///boards.contents.games



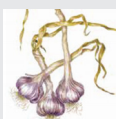
17. Mike Lanigan and Annie Lanigan
Angle Cottage, 40 East Street,
Ilminster, TA19 0AN. 07894 584113.
///padding.redeemed.escapes



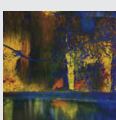
18. Wendy Hermelin, Stephanie Mogg, Caroline Lewis
Haldon, Townsend, Ilminster, TA19 0JA.
07890 694559.
///maybe.joyously.decimal



19. Deni Lauchlan
Old Beams, Lower Street, West
Chinnock, Crewkerne, TA18 7PT.
07887 480878.
///resists.parsnips.archives



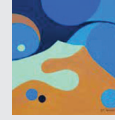
20. Alison Finch
Sandhill Barton, Weston Street, East
Chinnock, BA22 9EQ. 07973 158123.
///clever.officials.relocated



21. Diane Summer
The Orangerie, Underhayes Court, East
Chinnock, BA22 9FG.
///expensive.banter.replays



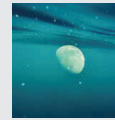
22. Kate Chidley and Esther Jeanes
West Coker Chapel, Manor Street,
West Coker, BA22 9BJ. 07767 454768.
///pill.seagulls.skidding



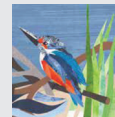
23. Jill Preston
46 Lower Wraxhill Road, Yeovil,
BA20 2JT. 01935 471843.
///saves.tonic.region



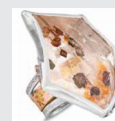
24. Jo Entwistle
Barwick Farm House, Rexes Hollow
Lane, Barwick, Yeovil, BA22 9TD.
07734 007196.
///bigger.mouse.arrive



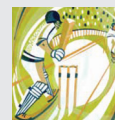
25. Carolyn Lefley, Jess Egan, Dawn Handy, Lupe Velazquez
Yeovil Art Space, Units 13 and 23,
Quedam Centre, Yeovil, BA20 1EU.
///plenty.editor.glare



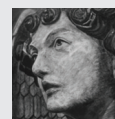
26. Blossom Chambers and John Gammans
Old Tannery Works, Victoria Road,
Yeovil, BA21 5AZ. 07580 667343.
///demand.undulation.newly



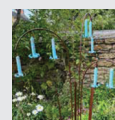
27. Julia Thompson
Old Flaxmill, Flaxdrayton Farm, South
Petherton, TA13 5LR. 07886 906262.
///requested.notices.conceals



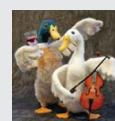
28. Paul Cleden
Amalfi, 76a West Street, Stoke Sub
Hamdon, TA14 6QL. 07957 909606.
///cinemas.hamsters.talked



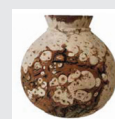
29. Bob Iles
1 Eastnor Villas, East Street, Martock,
TA12 6NQ. 07926 210638.
///firework.units.sweat



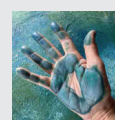
30. Chris Kampf
29 North Street, Martock, TA12 6DH.
07753 520479.
///hints.warp.stars



31. Michelle Hickman
6 Bowdens Farm, Hambridge Road,
Langport, TA10 0BP. 07941 147161.
///prongs.unleashed.endlessly



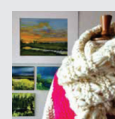
32. Dave Appleby
New Street House, New Street, Long
Sutton, Langport, TA10 9JW.
01458 241522.
///mason.prank.relief



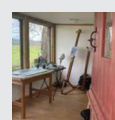
33. Sarah Bernsen
Knole Pit Meadow, Knole Pit Lane,
Somerton, TA10 9JD. 07891 856356.
///cotton.craft.seabirds



34. Sarah Beckerleg and Jackie Ford
Make It Education, The Cratt Buildings,
Long Sutton, TA10 9PZ. 07528 126342.
///headliner.kinks.overpaid

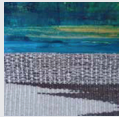


35. Jill Lister and Clarissa Ready
Heron House, North Street, Langport,
TA10 9RQ. 07866 008297.
///download.ruled.propelled



36. Frances Allerton and Janie Dromgool
2 Moorview, Pockocks Yard, Bow Street,
Langport, TA10 9PS. 07745 318582.
///purchaser.span.beaten

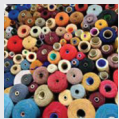
Venues 1 - 36



37. Stephen Jenkinson and Lia Duarte Jenkinson
Newtown Cottage, Newtown,
Langport, TA10 9SE. 01458 253665.
///limit.soil.cello



38. Rob Ellis, Amy Coo, Charlotte Blotheridge, Ella Fields
Goldenacre, Summerhedge Road,
Othry, TA7 0JD. 07974 733893.
///penned.powder.tint



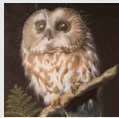
39. Seam Collective: Warped and Wasted
ACE Arts, Market Place, Somerton,
TA11 7NB. 01458 273008.
///resting.lifestyle.lake



40. Bobbie Killip and Stephen Hale
61 Behind Berry, Somerton, TA11 6JY.
07484 864536.
///chuckling.tourist.cloak



41. Antonia Myatt Corr
Myrtle Cottage, Gassons Lane,
Somerton, TA11 6HW.
///alley.ruffle.headed



42. Sue and Katy Wilde
1 Orchard Gardens, High Street, North
Cadbury, BA22 7DP. 07548 761421.
///lectured.slowly.weeds



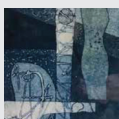
43. Blaxland Barn Workshop
Blaxland Barn, Fosters Lane, South
Barrow, BA22 7LN. 07720 840040.
///primary.unlocking.represent



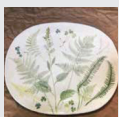
44. Julie Jenkins
2 The Old Police Station, North Street,
Wincanton, BA9 9AZ. 07467 041001.
///oaks.slurs.tungsten



45. Will Vaughan and Biddy Peppin
Cockhill Studios, Lower Cockhill Farm,
Barrow Road, Castle Cary, BA7 7NZ.
01963 351840.
///barstool.liked.fussy



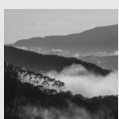
46. The Market House
Market Place, Castle Cary, BA7 7AH.
07966 300293.
///pheasants.sobered.eased



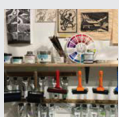
47. Matilda Moreton, Brigid Moreton, Charlotte Moreton
Roundhill Farm, Charlton Musgrove,
Wincanton, BA9 8HH.
///camcorder.spit.looms



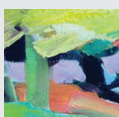
48. Tom Baskeyfield
Pithers Yard, Castle Cary, BA7 7AN.
07734 249415.
///bulky.hitters.boomers



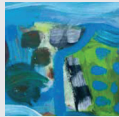
49. Debora Barnes
St Peter's Church, 2 The Annexe, Lower
Barn, Redlynch, Bruton, BA10 0NH.
///tell.keeps.defaults



50. Hannah Sida and Virginia Mason
Sunnydene, 76 High Street, Bruton,
BA10 0AJ. 07886 190586.
///strictest.twitching.blush



51. Vanessa Fawcett
Coombe Street Studio, Coombe Street,
Bruton, BA10 0EN. 07595 286403.
///reprints.delivers.loves



52. Shave Farm Artists
Shave Farm, South Brewham, Bruton,
BA10 0LG. 01749 812335.
///chuckling.loud.limiting



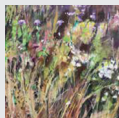
53. Lustre
The Musgrove Gallery, Queens
Building, Musgrove Park Hospital,
Taunton, TA1 5DA. 07834 986462.
///smart.sheets.comical



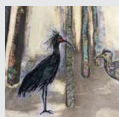
54. Magnus Hammick
Close Gallery, Close House, Hatch
Beauchamp, TA3 6AE. 01823 480350.
///caring.quiz.hindered



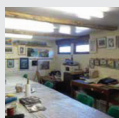
46



55. David Hinchliffe
Corfe Village Hall, Newton Lane, Corfe,
Taunton, TA3 7AQ.
///unrated.abolish.weeds



56. Sally Hebler and Nicky Saunter
12 Immenstadt Drive, Wellington,
TA21 9PT. 07969 570215.
///louder.trouser.fuzzy



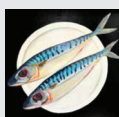
57. The McCormack Art Club
The Bothy, Park Farm, Wellington,
TA21 9NP. 01823 660764.
///wishes.folk.graph



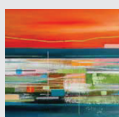
52



58. Diane Goring
Studio 22, 61 Pear Tree Way, Cades
Farm, Wellington, TA21 9AB.
07855 583160.
///boater.codes.blip



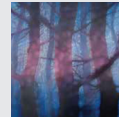
59. Sarah Thompson-Engels
1 Honiton Road, Trull, Taunton, TA3
7EP. 07909 732551.
///blotting.redouble.purified



60. The Old Brick Workshop
The Old Brick Workshop, Higher Poole,
Wellington, TA21 9HW. 07989 465427.
///gears.bagels.contoured



61. Catherine Hounsell, Lisa Takahashi, Lucy Rodgers
The Orangery, Nynehead Court,
Nynehead, TA21 0BW. 07765 915806.
///courts.dripped.clutter



62. Jo Louca
Greenlands, Hele, Taunton, TA4 1AJ.
07916 279457.
///dates.agree.quite



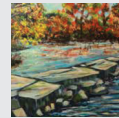
63. Michael Tarr and Philip Dudman
Dudman Studio, Sweet Briar Cottage,
Blagdon Hill, Taunton, TA3 7SL.
07494 718866.
///points.announced.scales



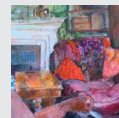
64. Go Create
Orchard Gallery, Unit 28, Orchard
Shopping Centre, Paul Street, Taunton,
TA1 3TP. 07730 605193.
///fuel.allows.snows



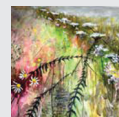
65. CHARIS Artists
Without Borders, 3 Riverside Place,
Taunton, TA1 1JH. 07803 767789.
///zoom.spent.market



66. Una Lee and Jane Hancox
Taunton Library, Paul Street, Taunton,
TA1 3XZ.
///strain.waving.poker



67. Pat Preater and Mia Stanley
Northbrook Lodge, 49 Staplegrove
Road, Taunton, TA1 1DG.
01823 283276.
///strain.waving.poker



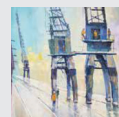
68. Vanessa Worrall
Orchard Gallery, Unit 28, Orchard
Shopping Centre, Paul Street, Taunton,
TA1 3TP. 07966 152372.
///fuel.allows.snows



69. Cath Shellswell
94 Cheddon Road, Taunton, TA2 7DW.
///congratulations.occurs.simple



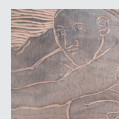
70. Jenny Sutton Kirby
Whitmore Barton, Whitmore Lane,
Taunton, TA2 6SR. 07910 888498.
///alien.learns.cage



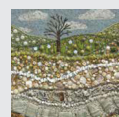
71. Kingston St Mary Village Hall
Church Lane, Kingston St Mary,
Taunton, TA2 8HR. 07379 905179.
///splash.jazz.horses



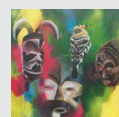
72. Tilly Willis and Tom Wood
Bicknells, Bathealton, Wiveliscombe,
TA4 2AN. 07961 970743.
///podcast.stowing.video



73. Jane Mowat
Little Hurstone, Waterrow, TA4 2AT.
///shaved.destined.utensil



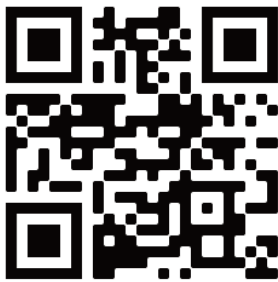
74. Coates English Willow Visitor Centre
Coates Visitor Centre, Stoke St
Gregory, TA3 6HY. 01823 490249.
///glass.nearly.shepherds



75. Jim Starr
Dulverton Town Hall, 27 Fore Street,
Dulverton, TA22 9EX. 07780 767563.
///roadmap.upholding.dockers

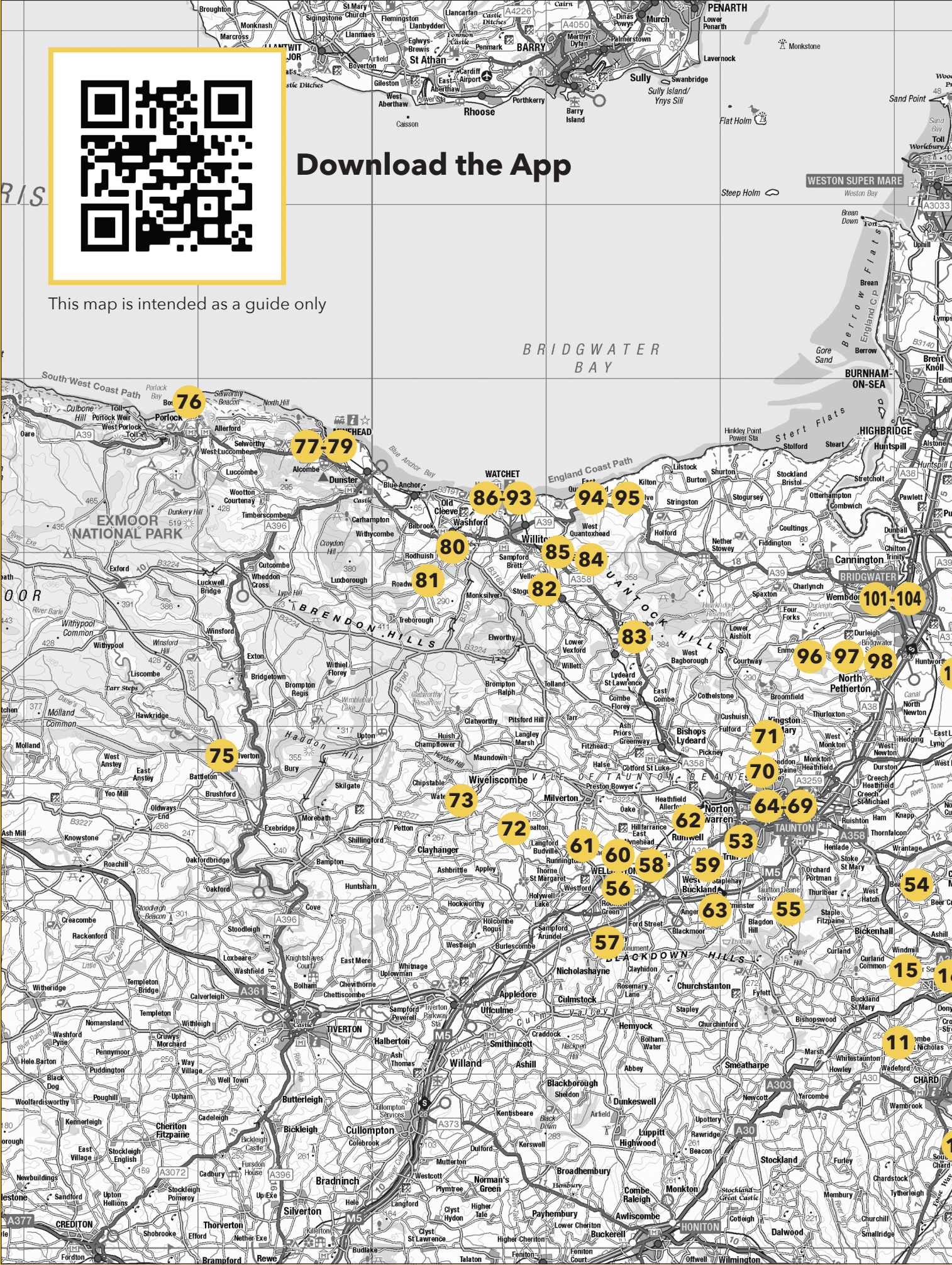
Venues 37 - 75

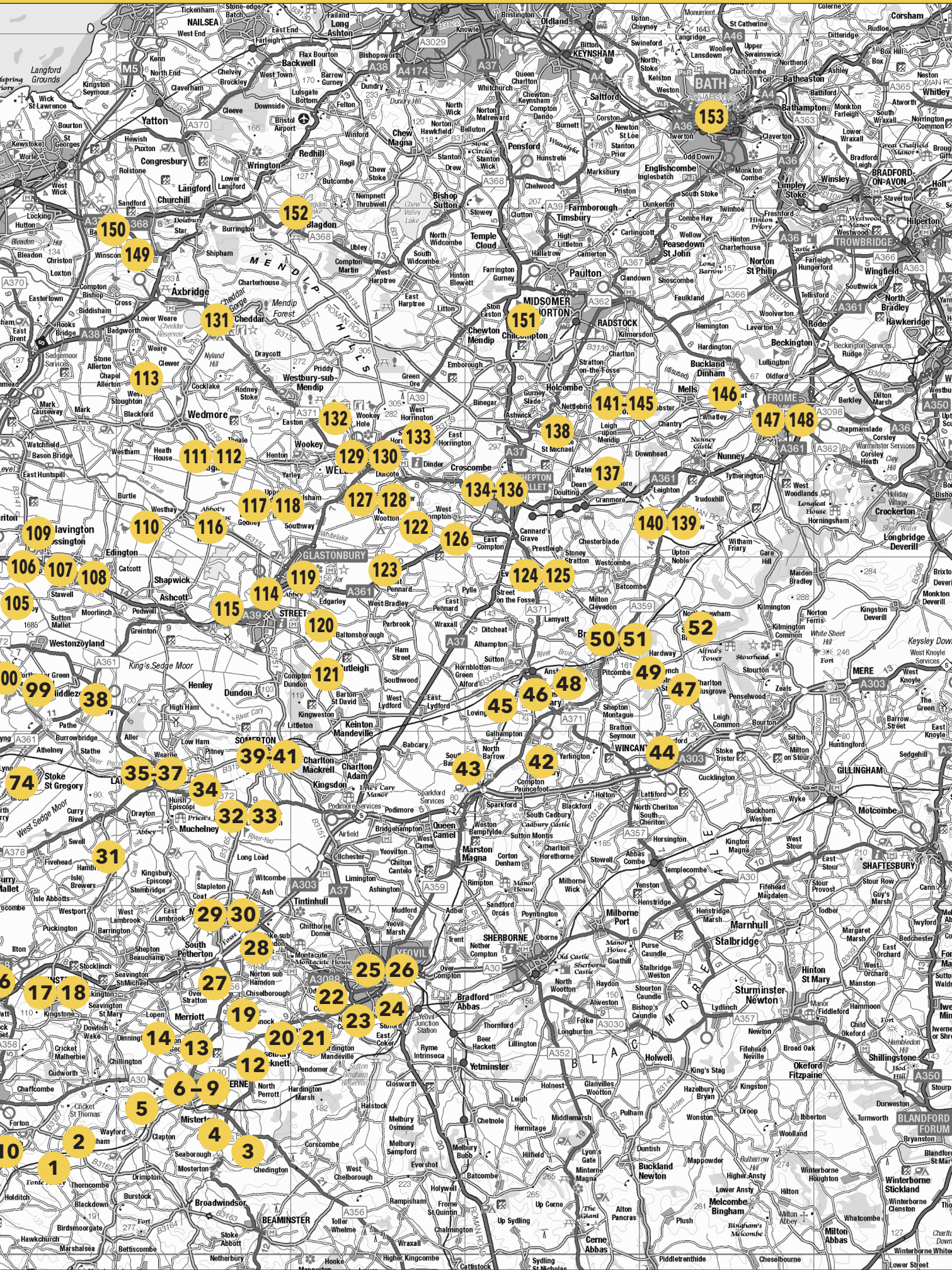
Somerset Open Studios 2025



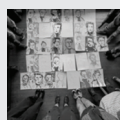
Download the App

This map is intended as a guide only





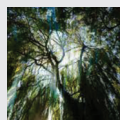
Somerset Open Studios 2025



76. Porlock Art Friends

Bossington Methodist Chapel,
Bossington Lane, Bossington,
TA24 8HH.

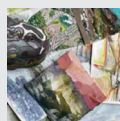
///roadmap.upholding.dockers



77. John Hailstone

Studio Cair Paravel, Moor Road,
Minehead, TA24 5RT. 07723 726101.

///woods.arrives.walked



78. Earth, Pigment and Thread

Townsend House, Townsend Road,
Minehead, TA24 7AP. 07966 838288.

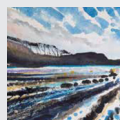
///appealed.explores.liberated



79. Leo Davey

Leo Davey Studio & Gallery, 24c Friday
Street, Minehead, TA24 5UE.
07816 151433.

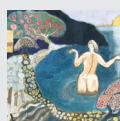
///player.attracts.should



80. Jane Hood and Emma Lumley

2 White Horse Cottages, Washford,
Watchet, TA23 0JZ. 07979 901784.

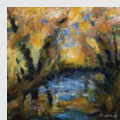
///panting.long.cluttered



81. Ann Farley

Orchard End, 13 Brendon Close,
Roadwater, TA23 0RG. 07876 730012.

///consented.stay.traffic



82. Barry Hibbert

Pound House, Brook Street,
Stogumber, Taunton, TA4 3SZ.
07786 214874.

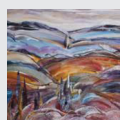
///floating.limits.chair



83. Emma Duke

The Studio, Ashfield Farm,
Crowcombe, TA4 4AW. 07770 485822.

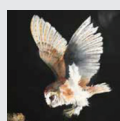
///reveal.unloads.assurance



84. Annabel Gaitskell Anderson

6 Trendle Lane, Bicknoller, Taunton,
TA4 4EG. 01984 656844.

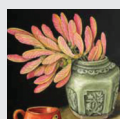
///casino.suspends.landings



85. Janet Lawrence

4 Sampford Brett, near Williton,
TA4 4JY. 07342 988119.

///crisper.lived.beginning



86. Jenny Barron

36 Causeway Terrace, Watchet,
TA23 0HP. 07706 861395.

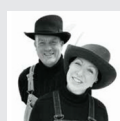
///gliding.swooned.books



87. Lisa Benson

11 Causeway Terrace, Watchet,
TA23 0HP. 07984 114955.

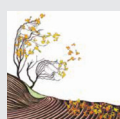
///truly.universal.pills



88. Angus Selene and Gina May Selene

16 Gladstone Terrace, Watchet,
TA23 0DP. 07790 016741.

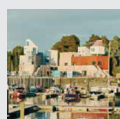
///responded.venues.spark



89. Jan Martin

6 Saxon Close, Watchet, TA23 0BN.
07905 273933.

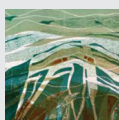
///bearable.scorched.budgeted



90. East Quay

East Quay, Harbour Road, Watchet,
TA23 0AQ. 01984 263103.

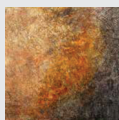
///rocket.crabmeat.lifeboats



91. Sue Lowe and Sarah Ward

Albatross Print Studio, East Quay,
Watchet, TA23 0AQ. 07963 692559.

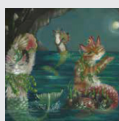
///quest.wipe.proved



92. Brenda Holmes

18 Greenway, Watchet, TA23 0BP.
07772 840398.

///fail.lungs.automatic



93. Jill Newton

13 Anchor Street, Watchet, TA23 0AZ.
07802 761993.

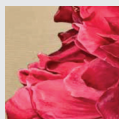
///launcher.revise.self



94. Hazel Barron and Duncan Salisbury

9 Higher Street, East Quantoxhead,
TA5 1EL. 07874 296070.

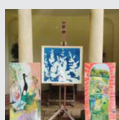
///punchy.poses.shampoo



95. James Howson-French and Alison Howson-French

Buckland House, East Quantoxhead,
Bridgwater, TA5 1EH.

///metro.hillsides.announce



96. Tessa Shaw

The Temple Of Pan, Halswell Park,
Goathurst, Bridgwater, TA5 2DH.

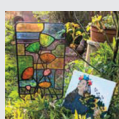
///brothers.adventure.vegans



97. Huntstile Organic Farm

Huntstile Farm, Goathurst, Bridgwater,
TA5 2DQ. 07725 278280.

///superbly.round.plod



98. Kate Doig and Sandy Flores-Henderson

18 Queen Street, North Petherton,
TA6 6RQ. 07879 813002.

///grades.curl.swept

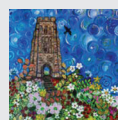


99. Lucy Willis

Moorland House, Riverside,
Burrowbridge, TA7 0RG.

01823 698200.

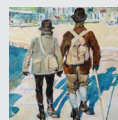
///drilled.trunk.jetliner



100. Charron Pugsley-Hill

Foxglove Studio, Penrose Cottage,
Northmoor Green Road, Moorland,
Bridgwater, TA7 0AX. 07966 208282.

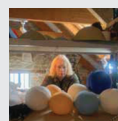
///fired.brother.alternate



101. The Trimel Group

Trimel House, 39 Northfield,
Bridgwater, TA6 7HA. 07891 850624.

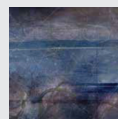
///rejected.badminton.soulful



102. Tina Salvidge

Somerset Film, 52 High Street,
Bridgwater, TA6 3BL. 01278 433187.

///display.windmill.cobbled

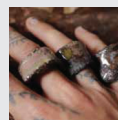


103. Marko Dutka

Bridgwater Arts Centre, 11-13 Castle
Street, Bridgwater, TA6 3DD.

01278 422700.

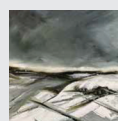
///deprive.bookmark.lost



104. Nathan Slate Atelier

1 Clare Street, Bridgwater, TA6 3EN.

///signed.outfitter.freed



105. Angela Uren and Margaret Micklewright

Old Post Office, Front Street, Chedzoy,
TA7 8RE. 07800 814783.

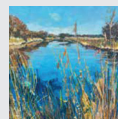
///mingles.heaven.performs



106. Jackie Curtis

2 Greenfield Lane, Bawdrip,
Bridgwater, TA7 8PX. 01278 685911.

///jump.diverting.posting



107. Nigel Downing

Rose Cottage, Middle Road,
Cossington, Bridgwater, TA7 8LH.

07375 323786.

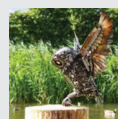
///talking.chart.shoelaces



108. Sue Burne

6 Townsend Lane, Chilton Polden,
Bridgwater, TA7 9EL.

///albums.earphones.impose

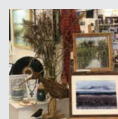


109. A Load of Old Scrap

The Old School Room, Causeway,
Woolavington, Bridgwater, TA7 8DN.

07717 202182.

///breed.correctly.amuse

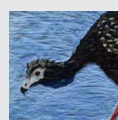


110. Somerset Crafts

Avalon Marshes Centre, Shapwick
Road, Westhay, BA6 9TT.

01458 860426.

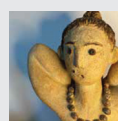
///bronze.digests.exile



111. Emma Abel and Mandi Baykaa-Murray

Maltfield Farm, Mudgley Road,
Wedmore, BS28 4TR. 07411 107916.

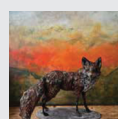
///even.stated.skis



112. Lily Sawtell

The Haven, Bagley, Wedmore,
BS28 4TG. 07976 591741.

///everybody.splits.shield

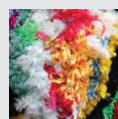


113. Lindy Paul and Lorna Brown

Moor Road Farm, Front Street, Chapel
Allerton, near Axbridge, BS26 2PH.

01934 712934.

///shuttling.whimpered.dragon



114. Somerset Art Works Bursary Artists 2025

Zig Zag Building, Morland Road,
Northover, Glastonbury, BA6 9FT.

///continued.cuddled.leathers

Venues 76 - 114



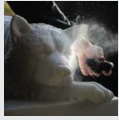
115. Charles Oldham
46 Main Street, Walton, Street,
BA16 9QE.
///appealing.craftsman.competent



116. Richard Turner
37 Ashcott Road, Meare, BA6 9SU.
07719 593289.
///beyond.boots.fidgeted



**117. Nicky Binks, Tim Ovel,
Chris Steadman, Charlotte Treloar**
Tor Barn Studio, Lower Godney, near
Wells, BA5 1RZ. 07704 585821.
///jokes.tonic.outboard



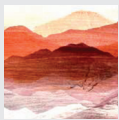
**118. Sam Lee, Amelia Roth,
Molly Briton**
Myrtle Farm, Godney, Wells, BA5 1RZ.
///paradise.merge.nightfall



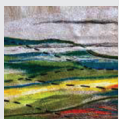
119. Heart of The Tribe Gallery
74 High Street, Glastonbury, BA6 9DZ.
01458 780046.
///tradition.tasty.beams



120. Kate Clements and Paul Russell
Broadway, Butleigh Wootton,
Glastonbury, BA6 8TX. 07734 459992.
///gifted.listen.popped



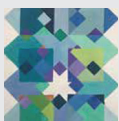
121. Dove Studios
Barton Road, Butleigh, Glastonbury,
BA6 8TL. 07905 644015.
///stop.trailers.skidding



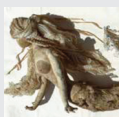
122. Charlotte Humpston
Orchard Studio, Pilton Hill Road, North
Wootton, Shepton Mallet, BA4 4ER.
07976 166454.
///pencils.youth.prowl



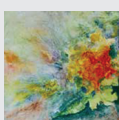
**123. Elizabeth Raeburn
and Rodney Lawrence**
Piltown Chapel, Piltown, West Pennard,
Glastonbury, BA6 8NQ. 01749 890501.
///searching.monument.indicated



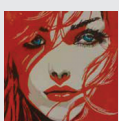
124. Charles Johnson
33 Gartons Mead, Evercreech, Shepton
Mallet, BA4 6JH. 07942 739596.
///fixtures.lilac.collects



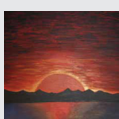
125. Penelope O'Gara
Horsehill Farm, Prestleigh Road,
Evercreech, BA4 6LN. 07815 294233.
///parsnip.summaries.badminton



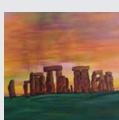
**126. Peter Lawrence
and Annie Fewlass**
Freedom Cottage, Cumhill, Pilton,
BA4 4BG. 07446 198319.
///entire.nuggets.jousting



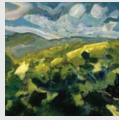
127. Shelley Dyer-Gibbins
The Crossways Hotel, Stocks Lane,
North Wootton, BA4 4EU.
07989 176149.
///incurring.payback.romantics



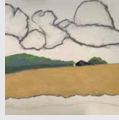
128. Alison Spiritweaver
Longacre, Tanyard Lane, North
Wootton, BA4 4AE. 07952 041477.
///mermaids.dolphins.adjuster



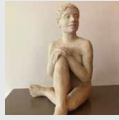
129. The Portway Artists Art Society
St Cuthbert's Church, St Cuthbert
Street, Wells, BA5 2AW. 07971 533601.
///master.gifted.reputable



130. Heritage Courtyard
6 Heritage Courtyard, 15 Sadler Street,
Wells, BA5 2RR. 07876 232810.
///loafing.resting.built



131. Janey Hunt and Sara Parsons
Chestnut Farm Studio, Kent Street,
Cheddar, BS27 3LG. 07734 216809.
///golf.gullible.scarcelly



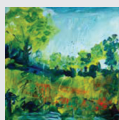
132. Jill Dunmore
67 Milton Lane, Wells, BA5 2QT.
07790 422434.
///signified.boring.dweller



133. Ruth Ames-White
Ginkgo House, Beryl Lane, Wells,
BA5 2XQ.
///informer.propelled.take



134. Commercial Road Studios
19 Commercial Road, Shepton Mallet,
BA4 5BU. 03333 446962.
///shredder.balconies.tips



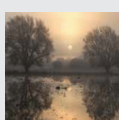
135. SMART Collective Artists
8 Town Street, Shepton Mallet,
BA4 5BG. 07952 626689.
///surprises.guesswork.deform



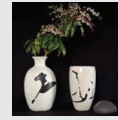
136. Rock Farm Collective
Rock Farm, Windsor Hill Lane, Shepton
Mallet, BA4 4JE.
///larger.skipped.easygoing



137. Alan Moulding
Western Farm, East Cranmore,
Shepton Mallet, BA4 4SE.
07776 254909.
///artichoke.predict.relishing



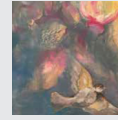
138. New Ideas
Haydon, Withybrook, Stoke St Michael,
Radstock, BA3 5JQ. 01749 840065.
///tailing.severe.otherwise



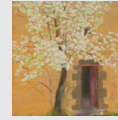
**139. Christine-Ann Richards
and Lutz Krainhofner**
Primitive Methodist Chapel, Wanstraw,
BA4 4TE. 07740 093001.
///limelight.shine.spearhead



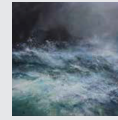
**140. Juliet Duckworth
and Olivia-Grace Smith**
Manor House, Church Street,
Wanstraw, BA4 4SU. 07831 095725.
///weds.irritable.gasping



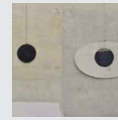
141. Alessandra Alexandroff
Coleford House, Underhill, Coleford,
Radstock, BA3 5LU. 07818 038121.
///grief.promising.initiated



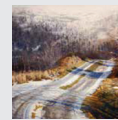
142. Melanie Moulding
Glen View, Church Street, Coleford,
Radstock, BA3 5LZ. 07523 184942.
///exploring.debt.bins



143. David A Parfitt and Janette Kerr
Church Hall Studios, Church Street,
Coleford, Radstock, BA3 5NG.
07946 777631.
///beside.reports.overtones



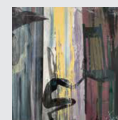
144. Emma Scott
2 Wesley Villas, Church Street,
Coleford, Radstock, BA3 5ND.
///square.smirking.layover



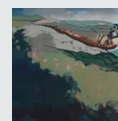
**145. Andrew Scott George
and Val George**
Noone Cottage, Springers Hill,
Coleford, BA3 5LN. 07923 021473.
///scanty.occupations.pitching



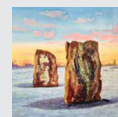
146. Andrea V Wright
Rivendell, Great Elm, Frome,
BA11 3NZ.
///showcases.coaster.golden



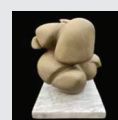
147. Artists in Dialogue
The Station Gallery, Station Approach,
Frome, BA11 1RE.
///humble.belt.diner



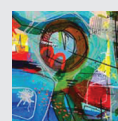
148. Amanda Bee
Garden Studio, 5 Clifts Buildings,
Frome, BA11 1LY.
///books.trade.juices



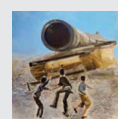
149. Ros Cuthbert
Winscombe Farm Studio, Parsons Way,
Winscombe, BS25 1BT. 01934 842970.
///crucially.lyricism.washroom



150. Alice Cunningham
12 South Croft, Winscombe, BS25 1JW.
07792 596641.
///options.vaulting.landlords



151. Michael Timpson
Ananda Barn, Parsonage Lane,
Chilcompton, BA3 4HD.
07808 501765.
///crumb.contrived.populate



152. Chris Holden
Barn House, Garston Lane, Blagdon,
Bristol, BS40 7TG. 01761 462021.
///proper.cases.applauded



153. Bath Artists' Studios
The Old Malthouse, Comfortable Place,
Bath, BA1 3AJ.
///grass.meal.legend

Venues 115 - 153

JOHN GAMMANS
ABSTRACT EXPRESSIONIST

SOMERSET OPEN STUDIOS
VENUE 26



13TH - 28TH SEPTEMBER
OPEN 10.00AM - 5.00PM
CLOSED MONDAYS & TUESDAYS
OLD TANNERY STUDIOS, VICTORIA ROAD, YEovil BA21 5AZ

JOHNGAMMANS.ARTIST JOHNGAMMANS.CO.UK 07580 667843 INFO@JOHNGAMMANS.CO.UK

Lucy Willis

Venue 99
Burrowbridge TA7 0RG

lucywillis.com






PAUL CLEDEN
Printmaker
Venue 28
paulcleden.co.uk

Shelley Dyer-Gibbins
ARTIST AND PRINTMAKER

Turning traditional linocut on its head with mixes of different medium to create an edgy, urban and contemporary style. Also featuring the debut of local artist Eden Fowler.

VENUE 127: The Studio, The Crossways Hotel, Stocks Lane, North Wootton, Somerset, BA4 4EU
13 - 28 September, 10am - 3pm
Child Workshop - 1 hour - £5
Adult Workshop - 1 hour - £10
01749 899000
Instagram: @shelleydyergibbinsart
shelleydyergibbinsart.com

JILL PRESTON
Impressionistic and abstract paintings with an emphasis on line and bold colour

VENUE 23
46 Lower Wraxhill Road, Yeovil, BA20 2JT
10am - 6pm daily
01935 471843 / jillprestonpainter.co.uk



Venue 60
THE OLD BRICK WORKSHOP
Higher Poole, Wellington, TA21 9HW
07989 465427
theoldbrickworkshop.com

Alison Cosserat | James Marsden | Sophie Jennings
Phoebe Thomasson | Joanna Commings
Owen Meredith | Keith Crocker | Alexandra Lavizzari
Tina Hill | Ruth Drew | Maddie Rock
Chrissy Schicht | Craig Askew



Melanie Thompson
Giving Sanctuary

A tent, a camera and the search for safety.
An interactive, site-specific installation.

20 - 28 September
The Attic, Heritage Courtyard,
15 Sadler Street, Wells, BA5 2RR
@giving_sanctuary



EARTH, PIGMENT AND THREAD

Jill Davies, Georgina King,
Gary Mills, Linda Trump

An exploration of the stories, energy, textures and patterns of landscape

VENUE 78: Townsend House,
Townsend Road, Minehead, TA24 7AP
Open every day, 13 - 21 September
07966 838288 / jilldavies-artist.com



CAROLYN LEFLEY
JESS EGAN
DAWN HANDY
LUPE VELAZQUEZ

VENUE 25
Quedam Shopping Centre
Gallery (Unit 13-15)
Members Studios (Unit 24)

Opening Times
WED to FRI 12-4
SAT 11-4 & SUN 12-4

yeovilartspace.uk/openstudios2025

YEovil ART SPACE

SOMERSET ART WEEKS
SOMERSET OPEN STUDIOS
13 - 28 September 2025

John Gammans

John Gammans makes large drawings and monochrome paintings on paper and canvas. His current obsession is the wind, the way it performs, our relationship with it as human beings. We can feel it and see the way that it makes trees, grass, water, even buildings move but in itself it is invisible. His work is an attempt "to make the wind visible".

As part of his research he constructed a wind machine out of artists easels and bits of wood. It was initially designed as a prototype, but as time progressed his desire to "tidy it up" became irrelevant because it had become a tool to "understand what I was actually seeing in the landscape and decipher what was going on". He attaches a gel pen to the mechanism, "they flow nicely", and a roll of paper and lets the machine and the wind collaborate in making the drawings. His aim is "to capture difference between stillness and motion".

There is no weight of line in these drawings. The marks are thin and regular with no variation in the width because they are machine drawn. However what you get is a beautifully flowing line that dips and turns, winding round upon itself following the direction of the wind.

Gammans has become fascinated with what happens when the wind pauses and the pen stops. The gaps between the lines have, for him, become "tiny negative pockets" of space, which he identifies and isolates. He places clear plastic over the drawings and marks the empty white areas with thick acrylic pen. He then scales up these selected shapes and transfers them onto canvas creating large powerful paintings using black oil paint and cold wax.

He works on these paintings on the floor and on the wall, stretching the canvas on industrial galvanised poles - a nod to his initial training in three dimensional design. This scaffolding adds a sense of power and replicates the elemental feel of the wind. These paintings are



'INTERPLAY NO. 6'
(Oil and cold wax on canvas with galvanised steel stretchers, 198 x 198 cm, June 2025)

sculptural and in a way quite confrontational - exuding the strength that the unbridled wind inflicts on us when we attempt to navigate it.

He calls this group of works *Interplay*. They mimic the "interplay of wind within the landscape, little tiny events that are happening, large marks representing tiny things - using paint".



In addition to his machine drawings he gets out into the landscape with his sketchbook. Storm Eunice hit the UK on 18th February 2022 and was one of the rare recent storms given a red warning by the met office. John Gammans was out in that storm drawing in his sketchbook with a gel pen! There is huge energy in the resulting wind conceptualisation paintings where he is "imagining what the wind would look like if it was on a light spectrum and we could see it".

He cites Cezanne and Van Gogh as influences and more recently the landscape paintings of John Virtue. In the monochrome works that he has been making for the last three plus years there are hints of Franz Kline, the American painter associated with the Abstract Expressionists. There is also a three dimensionality that suggests his next move might be sculptural.

Fiona Robinson

Venue 26: Old Tannery Works, Victoria Road, YEOVIL, BA21 5AZ. Wednesday - Sunday 10am - 5pm. 07580 667343.



Follow **evolvermagazine** on Instagram



VENUE 52

SHAVE FARM ARTISTS

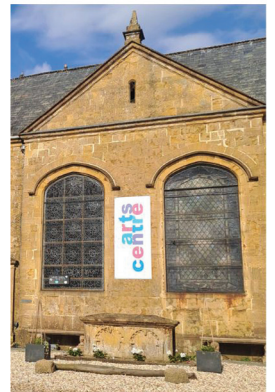
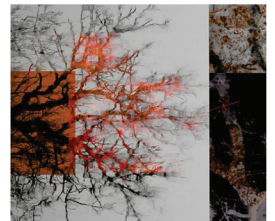
Annie Fry, Kay Lewis-Bell, Lin Hawkins, Terri Hogan

Shave Farm, South Brewham, BA10 0LG
Thursday - Sunday 11am - 5pm

ILMINSTER ARTS CENTRE

LOOKING FOR AN EXHIBITION SPACE?

APPLICATIONS OPEN FOR 2026



exhibitions@ilminsterarts.org.uk
www.ilminsterartscentre.com
East Street, Ilminster, TA19 0AN 01460 54973

ILMINSTER **arts** centre
AT THE MEETING HOUSE



HEART OF
THE TRIBE
ART GALLERY

11 SEPTEMBER - 19 OCTOBER

An exhibition celebrating the talent of our SAW resident artists, showcasing the diverse and dynamic work created during the Somerset Art Weeks residencies.

Somerset
Art
Weeks

Experience live, in-gallery action and witness the creative process unfold before your eyes.



Kim von Coels

Explore light paintings and creative photography, with live studio work showcasing the artist's unique approach to capturing images through long exposure photography.



Peter Yorke

Lumia, a symphony for the eyes. Ethereal realms created by manipulating light through the medium of glass. Discover the mesmerising visuals of this fascinating installation.



Jon Minshall

Watch as Jon brings his paintings to life in our community hub, stop for a complimentary coffee and a chat to gain an intimate insight into his wonderful artistic process.



Please visit
somerseartworks.org.uk
for more information.

Navigate this year's event with ease with the **Somerset Open Studios 2025 Guide**. Pop in and pick up your free guide in our gallery, or scan the QR code for instant digital access.

Meet artists and makers, engage in exciting workshops, and discover the creative communities on your doorstep.

SOMERSET OPEN STUDIOS

13 - 28 September 2025

Explore our latest art exhibition, experience our award-winning garden and enjoy complementary hot drinks.

74 High Street, Glastonbury, BA6 9DZ. | 01458 780046 | heartofthetribe.com

'MEGABRECCIA'

13 September - 26 October

White Chapel Somerset, White Chapel, The Hill, LANGPORT, TA10 9QF. 2 - 6pm. 07964 432966 / whitechapel Somerset.com. "Site-specific exhibition by George Henry Longly, marking a significant homecoming for the artist as he returns to Langport to explore the landscape of his formative years."

JO LATHWOOD: 'DOWN THE HATCH'

13 September - 4 January

Galleries 1 and 2, East Quay, Harbour Road, WATCHET, TA23 0AQ. 10am - 5pm. 01984 263103 / eastquaywatchet.co.uk. "New exhibition by Bristol-based artist exploring where British pub culture meets storytelling, from a queer perspective."

THE DORSET MONOCHROME COLLECTIVE

15 - 21 September

Garden House, Borough Gardens, Cornwall Road, DORCHESTER, DT1 1RU. 10am - 4pm. 07955 220024 / alisonwebber.co.uk. Photographs.

'JOY AS AN ACT OF RESISTANCE'

17 - 28 September

Walford Mill, Knobcrook Road, WIMBORNE, BH21 1NL. Wednesday - Saturday 10am - 5pm, Sunday 11am - 4pm. 01202 841400 / walfordmillcrafts.co.uk. "Exhibitions by students at AUB and BU working with collage artist Sarah Redmond-Fareham."

'UNCONSCIOUS VISIONS: DREAMS ON PAPER'

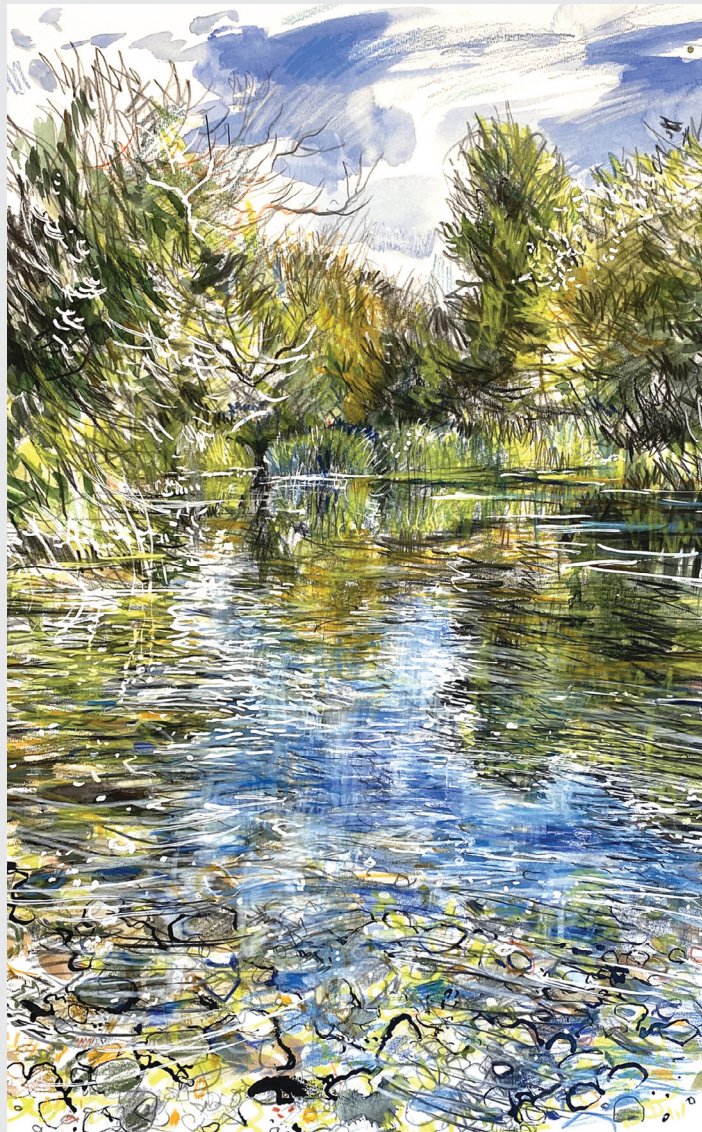
18 September - 1 October

Hidden Gallery, 6 - 8 The Clifton Arcade, Boyce's Avenue, CLIFTON, Bristol, BS8 4AA. Monday - Saturday 10am - 5pm, Sunday 11am - 4pm. hiddengallery.co.uk.

'CLOUDS OF ABSTRACT INFORMATION'

19 September - 5 October

Michael Pennie Gallery, Bath School of Art, Film & Media, Locksbrook Campus, BATH, BA1 3EL. Monday - Friday 9am - 5pm. 07913 809675 / angelgreenham.co.uk.



'CONFLUENCE EBBLE - AVON, BODENHAM 020824'
(Mixed media, detail)

Nick Andrew: Confluence

"Plein air drawing project exploring the sources, tributaries and confluences of the five rivers that have shaped the landscape of South Wiltshire."

30 August - 27 September: Fisherton Mill, 108 Fisherton Street, SALISBURY, SP2 7QY. Monday - Saturday 9.30am - 5pm. 01722 415121 / fishertonmill.co.uk.

THE SOUTH WEST TEXTILE GROUP: 'LIVING COLOURS'

19 September - 18 October

The Pound Arts Centre, Pound Pill, CORSHAM, SN13 9HX. Monday - Saturday 10am - 9.30pm. poundarts.org.uk.

MELANIE THOMPSON: 'GIVING SANCTUARY'

20 - 28 September

The Attic, Heritage Courtyard Gallery & Studios, Sadler Street, WELLS, BA5 2RR. Tuesday - Saturday 10am - 4pm. 07398 431227. "Visitors are invited to step into a modern-day confessional and reflect on their relationship with safety, shelter, and responsibility."

'WE RISE'

20 September - 1 November

Lighthouse, 21 Kingland Road, Poole, BH15 1UG. Monday 10am - 5pm, Tuesday - Sunday 10am - 8pm. 01202 280000. "Vibrant exhibition showcasing the work of global majority artists in Dorset and invited guests."

SHAUN BRACEY: 'FOSSILISED TIME'

24 - 30 September

The Gallery, Shaftesbury Arts Centre, Bell Street, SHAFTESBURY, SP7 8AR. Monday - Saturday 10am - 4pm. shaftesburyartscentre.org.uk. "Musical portraits inspired by original paintings and photographs."

PRINT & SCULPTURE OPEN

25 September - 14 October

Sou'-Sou'-West Gallery, Manor Yard, Symonds Estate, SYMONDSBURY, Bridport, DT6 6HG. 10.30am - 4.30pm. 01308 301326.

GEORGINA HEYWOOD-SMITH: 'PLACES & PEOPLE'

26 - 28 September

West Barn, Pound Lane, BRADFORD-ON-AVON, BA15 1LF. 10am - 5pm. 07478 411907 / georginaheywoodsmith.com.

BATHEASTON ART TRAIL

27 and 28 September

New Village Hall, School Lane, Northend, BATHEASTON, Bath, BA1 7EP. batheastonarttrail.com. "Fifty artists exhibit their work."

Kit Glaisyer The Cinematic Landscape

Kit Glaisyer Fine Art

11 Downes Street, Bridport, Dorset DT6 3JR

kitglaisyer.com

Open Saturdays 10am to 3pm & by Appointment 07983 465789

PERCY LIZZARD

1 - 7 October

The Gallery, Shaftesbury Arts Centre, Bell Street, SHAFTESBURY, SP7 8AR. Monday - Saturday 10am - 4pm. shaftesburyartscentre.org.uk.

PIA ELLIOT: 'WILD LINES'

1 - 12 October

Walford Mill, Knobcrook Road, WIMBORNE, BH21 1NL. Wednesday - Saturday 10am - 5pm, Sunday 11am - 4pm. walfordmillcrafts.co.uk. "Intricate pen and ink illustrations."

BULL MILL STUDIO 'FIRST SATURDAY'

4 October

Bull Mill Studio, Bull Lane, CROCKERTON, Warminster, BA12 8AY. 10am - 5pm. 07730 400784 / nickandrew.co.uk. See 6 September.

VIVIAN THOMASON

4 - 31 October

Artwave West, MORCOMBELAKE, DT6 6DY. Wednesday - Saturday 10am - 5pm. artwavewest.com.

LOUISE LUTON: 'WILD WORLD'

4 October - 15 November

Fisherton Mill, 108 Fisherton Street, SALISBURY, SP2 7QY. Monday - Saturday 9.30am - 5pm. 01722 500200 / fishertonmill.co.uk.

'EARTH FORMS'

7 - 31 October

Ilminster Arts Centre, The Meeting House, East Street, ILMINSTER, TA19 0AN. Tuesday - Saturday 9.30am - 3pm. ilminsterartscentre.com. "Exhibition celebrating nature through artistic interpretations of landscapes, organic shapes, and natural elements."

JENNY LUCK: 'FROM THE EARTH'

8 - 14 October

The Gallery, Shaftesbury Arts Centre, Bell Street, SHAFTESBURY, SP7 8AR. Monday - Saturday 10am - 4pm. shaftesburyartscentre.org.uk.

'GARDENS OF DELIGHT'

8 - 19 October

Yeovil Art Space, 23 Vicarage Walk, YEOVIL, BA20 1EX. 10am - 4pm. mirandapender.com. "Dawn Handy and Miranda Pender come together for a dazzling exhibition inspired by nature in full bloom."



'UNDULATION'

Helen Simpson

"The newly refurbished Café Gallery in Abbotsbury Subtropical Gardens is the perfect space for Helen Simpson's work. The many doors and windows of the quaint, colonial style building invite you to look out at an array of plants, but when you look up into the exhibition space above the windows, Helen's large-scale paintings of flowers draw you into a closer relationship with plants than you might have imagined possible. When Helen looks into a flower, leaves and petals become swirling forms, defying gravity or swimming beneath the waves, suggesting times future and past. Since leaving The Royal Academy Schools, Helen has exhibited across the country, including Kew Gardens where she had 30 pictures on show. Helen lives in a village not too far away from Abbotsbury and is able to spend time painting in the Gardens. You may well find her drawing under a white umbrella."

Until 31 October: Cafe Gallery, Abbotsbury Subtropical Gardens, Buller's Way, ABBOTSBURY, near Weymouth, DT3 4LA. 10am - 5pm. Free entry to Café Gallery. 01305 871387 / helensimpsonartist.co.uk.

WEST BRISTOL ARTS TRAIL

11 and 12 October

Multiple venues in Clifton, Hotwells and Redland, WEST BRISTOL. 11am - 5pm. 07545 848919 / westbristolartstrail.co.uk.

'LEIGH ART SHOW 2025'

11 and 12 October

Village Hall, Chetnole Road, LEIGH, near Sherborne, DT9 6HL. Saturday and Sunday 10am - 4pm. £2. 07516 632648 / leighartshow.co.uk.

AVALON STITCHERS: 'MEMORIES THROUGH STITCH'

11 - 18 October

Wells & Mendip Museum, 8 Cathedral Green, WELLS, BA5 2UE. Tuesday - Saturday 10am - 4pm. avalonstitchers.org.

'SELECTED'

11 October - 9 November

Sou'-Sou'-West Gallery, Manor Yard, Symonds Estate, SYMONDSBURY, Bridport, DT6 6HG. 10.30am - 4.30pm. 01308 301326 / sousouwest.co.uk.

ANDREA JENKINS

13 October - 2 November

The Duchess of Cornwall, 12 Queen Mother Square, POUNDBURY, Dorchester, DT1 3DD. Monday - Saturday 9am - 11pm, Sunday 9am - 10pm. artattheduchess.com. "Vibrant abstract art to bring a smile to your face."

GARY YOUNG: '54'

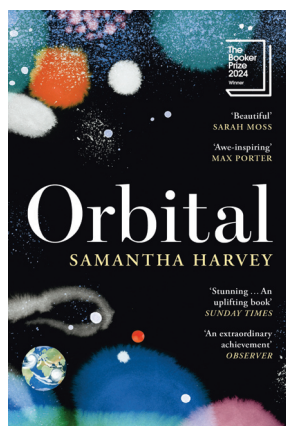
15 - 21 October

The Gallery, Shaftesbury Arts Centre, Bell Street, SHAFTESBURY, SP7 8AR. Monday - Saturday 10am - 4pm. shaftesburyartscentre.org.uk. Paintings.

'AUTUMN JEWELS'

15 - 26 October

Walford Mill, Knobcrook Road, WIMBORNE, BH21 1NL. Wednesday - Saturday 10am - 5pm, Sunday 11am - 4pm. walfordmillcrafts.co.uk. "Exhibition of contemporary jewellery by the Wessex branch of the Association for Contemporary Jewellery (ACJ), a vibrant collective of professional jewellers, designers, and makers."



In conversation with 2024 Booker Prize-winning author, Samantha Harvey

Friday 29th August, 5.30pm for 6pm

Sherborne Abbey, as part of the GAIA exhibition

£10 Sherborne Literary Society members / £12 non-members sherborneliterarysociety.com/events

'A love letter to our planet'

The Booker Prize judges about *Orbital*

GAIA by Luke Jerram will be at Sherborne Abbey
29th August - 12th September

GAIA
LUKE JERRAM



Tincleton Gallery

contemporary fine art in Dorset

Summer 2025

gallery & guest artists
Sat 6 Sep 2025 – Sun 4 Jan 2026



"Bird 1" linocut detail from A/P, by Jane Chapman

The Old School House, Tincleton, near Dorchester, DT2 8QR
Saturday and Sunday or by appointment
01305 848909 • tincletongallery.com



InsideOut

DORSET

activate
performing arts

Family-Friendly Arts Festival
12–21 September 2025

Extraordinary Events
in Extraordinary Places

f insideoutdorset
@ activate_parts #IOD2025



insideoutdorset.co.uk



Supported using public funding by
**ARTS COUNCIL
ENGLAND**



Hengistbury Head: People, Place, Birds

DRAWING – PAINTING – PRINTMAKING
by TOM MARSHALL

2 - 29 September 2025

HENGISTBURY HEAD VISITOR CENTRE

Hengistbury Head Nature Reserve, Bournemouth, BH6 4EW

Open daily 10am - 4pm / Free Entry

01202 128444 / visithengistburyhead.co.uk

tommarshallart.weebly.com / @tommarshallart



Nick Andrew
20 May 2023. Half a mile west of Dorchester, the River Stour flows through a lush landscape of tall grasses and reeds. The river is a vibrant blue-green, reflecting the sky and the surrounding vegetation. The banks are lined with tall, slender reeds and grasses, creating a sense of depth and texture. The overall mood is peaceful and serene, capturing the beauty of the natural world.

Nick Andrew plein air drawings- South Wiltshire's five chalk rivers- sources, tributaries, confluences

Fisherton Mill 108 Fisherton Street, Salisbury SP2 7QY

Sat 30 Aug - Sat 27 Sept. Mon- Fri 9.30- 5 / Sat 9.30- 5.30

Sun closed. Tel: 01722 415121 (FM) / 07730 400784 (NA)

www.nickandrewdrawingprojects.wordpress.com

www.nickandrew.co.uk www.fishertonmill.co.uk



Towns of Culture
2025
PORTLAND & WEYMOUTH

REVEAL

CELEBRATE THE CREATIVITY AND HERITAGE OF PORTLAND & WEYMOUTH!

From music and theatre to crafts, festivals, and food, **REVEAL** brings culture to where we live, work, and gather.

Be part of the movement—join us as an artist, participant, or audience member!

Let's **REVEAL** something special together.

PORTLANDWEYMOUTHculture.com



Supported using public funding by
**ARTS COUNCIL
ENGLAND**



**PORTLAND
TOWN COUNCIL**



**WEYMOUTH
TOWN COUNCIL**

Visual Arts

'POOLE'

17 October - 3 November

The Gallery Upstairs, Upton Country Park, POOLE, BH17 7BJ. 10am - 4.30pm. thegalleryupstairs.org.uk / pedas.org.uk. "Paintings that capture the essence of the town and its environs, its history and people."

GORDANO TEXTILE ARTISTS:

'HIDDEN GEMS'

18 - 22 October

Centrespace, 6 Leonard Lane, BRISTOL, BS1 1EA. 11am - 4pm. 01179 687588.

STEVE MANNING AND GUESTS

18 October - 9 November

Sou'-Sou'-West Gallery, Manor Yard, Symonds Estate, SYMONDSBURY, Bridport, DT6 6HG. 10.30am - 4.30pm. 01308 301326 "Reduction linocut prints inspired by coastal landscapes."

JOSEPH DEMMAR: 'MOVEMENT, AUTOMATION AND HEAT'

22 - 28 October

The Gallery, Shaftesbury Arts Centre, Bell Street, SHAFTESBURY, SP7 8AR. Monday - Saturday 10am - 4pm. shaftesburyartscentre.org.uk.

NAOMI JOY: 'LOVE THE UNLOVED'

23 October - 3 November

The Pound Arts Centre, Pound Pill, CORSHAM, SN13 9HX. Monday - Saturday 10am - 9.30pm. 01249 701628 / poundarts.org.uk. "Discover overlooked local wildlife through eco-artist Naomi Joy's work, celebrating threatened species like Bechstein's bats, woodlice, and pigeons, revealing Wiltshire's hidden beauty and inspiring protection through fresh perspectives."

SECRET POSTCARD AUCTION

2025

24 October - 6 November

RWA, Queen's Road, Clifton, BRISTOL, BS8 1PX. Tuesday - Sunday 10am - 5pm. rwa.org.uk.

BROADSTONE ART SOCIETY ART FAIR

25 October - 2 November

The Youth Centre, Moor Road, BROADSTONE, BH18 8BB. 10am - 4pm. 07831 613185.



MARZIA COLONNA 'WAKING MOMENT'

As Dreams Are Made On

"Marzia Colonna and Fiamma Colonna Montagu, mother and daughter, exhibit their harmonious and yet utterly individual and irresistible collages and sculptures. The exhibition title refers to Shakespeare's idea that life is an illusion, made up of dreams, fragments and memories. In this exhibition both artists are showing work which carries the quality of dreams, works resonant of deep sensory impressions and memories of colours and textures in nature."

20 September - 8 November: Sladers Yard, West Bay Road, WEST BAY, Bridport, DT6 4EL. Wednesday - Saturday 10am - 4pm. 01308 459511 / sladersyard.co.uk.

'VESSELS'

25 October - 2 November

Sandy Hill Arts, Sandy Hill Lane, CORFE CASTLE, BH20 5JF. 10am - 4pm. 07779 868499. "Richard Jeffery and Jayne Cunliffe come together as ceramic artists to show their new work."

ACE ARTS OPEN 25

25 October - 24 December

ACE Arts, Market Place, SOMERTON, TA11 7NB. Tuesday 11am - 5pm, Wednesday - Saturday 10am - 5pm. 01458 273008 / acearts.co.uk. "Exhibition showcasing a diverse array of mediums."

'EVER PRESENT'

27 October - 5 November

Malthouse Gallery, Town Mill Courtyard, Mill Lane, LYME REGIS, DT7 3PU. 10am - 5pm. 07811 102216 / alisonsheltonbrown.art. "High quality artworks and handmade items."

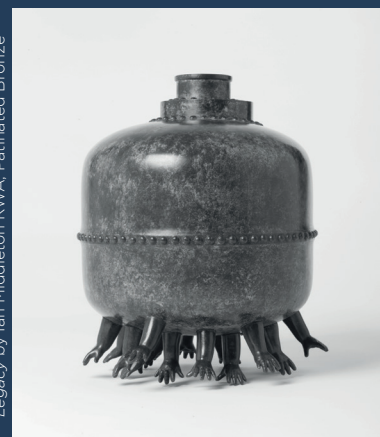
SHERBORNE TIMES

A MONTHLY CELEBRATION OF PEOPLE, PLACE AND PURVEYOR

OUT NOW AND ONLINE

sherbornetimes.co.uk

Artist at Work No 81:
Legacy by Ian Middleton RWA, Patinated Bronze



Music

September and October 2025



Tatterdemalion

"Tatterdemalion play folk tunes for dancing at what has become something of a tradition. These ever popular evenings include an earlier session for those with little legs, to allow young families the chance to dance together."

13 September: The Corn Exchange, High East Street, DORCHESTER, DT1 1HF. 7.30pm. £13 / £7. 01305 266926 / dorchesterarts.org.uk.

SPOOKY MEN'S CHORALE

4 September

Lighthouse, 21 Kingland Road, POOLE, BH15 1UG. 7.45pm. 01202 280000 / lighthousepoole.co.uk.

"Mighty sounds, exquisite tenderness, and charming stupidity."

BYRON WALLEN

5 September

Ilminster Arts Centre, The Meeting House, East Street, ILMINSTER, TA19 0AN. 7.30pm. £20. 01460 54973 / themeeetinghouse.org.uk. Jazz.

ROGER BEAUJOLAIS AND ROB PALMER

5 and 6 September

Tincton Gallery, The Old School House, TINCLETON, near Dorchester, DT2 8QR. 7.30pm. £20. tinctongallery.com. *"Vibraphone and guitar recital."*

THE AMY MAYES BAND

6 September

The Corn Exchange, High East Street, DORCHESTER, DT1 1HF. 7pm. £16 / £14. 01305 266926.

ELCHIN SHIRINOV AND JEREMY STACEY

7 September

Sound Cellar, The Grasshopper, 139 Bournemouth Road, POOLE, BH14 9HT. 7.30pm. £17.50 / £10. soundcellar.org.

SKIMMITY HITCHERS

12 September

Hedgers Cider House, Row of Ashes Lane, BRISTOL, BS40 5TU. 7.30pm. £10. 07811 245809 / hedgersciderhouse.com.

THE AMY MAYES BAND

12 September

Ilminster Arts Centre, The Meeting House, East Street, ILMINSTER, TA19 0AN. 7.30pm. £20. 01460 54973 / themeeetinghouse.org.uk.

JO HARROP

12 September

The Mowlem, Shore Road, SWANAGE, BH19 1DD. 7.30pm. £15. themowlem.com. *"Award-winning jazz singer Jo Harrop's smoky, intimate voice effortlessly blends jazz, blues, and soul."*



FILKIN'S DRIFT

12 September

The Pound Arts Centre, Pound Pill, CORSHAM, SN13 9HX. 7.30pm. £14. poundarts.org.uk. Folk.

JOSHUA RYAN AND CHRISTINE BURAS

17 September

The Pound Arts Centre, Pound Pill, CORSHAM, SN13 9HX. 1pm. £8. 01249 701628 / poundarts.org.uk.

MARK LOCKHEART AND JOHN PARRICELLI

18 September

Sound Cellar, The Grasshopper, 139 Bournemouth Road, POOLE, BH14 9HT. 7.30pm. £17.50 / £10. soundcellar.org. Jazz.

SPAFFORD CAMPBELL

19 September

Lighthouse, 21 Kingland Road, POOLE, BH15 1UG. 8pm. 01202 280000 / lighthousepoole.co.uk.

"Two modern English folk musicians."

eps
INDEPENDENT RECORD STORE
Unit 29, Vicarage Walk,
The Quedam, Yeovil

Vinyl Van
8 Pope Street
Brewery Square
Dorchester
Dorset DT1 1GW
Tuesday to Saturday
from 10am

THE BEAT & TRACK
INDEPENDENT RECORD STORE
New and pre-loved vinyl, official t-shirts,
merchandise and memorabilia
**THE OLD SHAMBLES, SOUTH STREET,
SHERBORNE, DT9 3LU**
07730 356719
thebeatandtrack.co.uk

CLOCKTOWER RECORDS
BRIDPORT
**St Michael's Estate
Bridport
Dorset DT6 3RR**
Monday to Saturday
10am - 4.30pm
01308 458077

KIKI DEE AND CARMELO LUGGERI 19 September

The Corn Exchange, High East Street, DORCHESTER, DT1 1HF. 7pm. £27 / £25. 01305 266926.

JUDAS GOAT & THE BELLWETHER + LONG SUN 19 September

Meet at Eight, 8 Silver Street, YEOVIL, BA20 1HW. 7.30pm. Free entry. 01935 311033. "Psychedelic blues rock."

PRISTON MUSIC FESTIVAL

19 - 21 September

Village Green, PRISTON, Bath, BA2 9EE. 07871 572969 / priston.org.uk.

THE BATH GILBERT & SULLIVAN SOCIETY

20 September

Martock Church, MARTOCK, TA12 6JL. 7.30pm. £12 / £10. 07547 213992 / martockonline.co.uk. "Arias and extracts from the well-known operetta 'Trial by Jury'."

'FROM CLOISTER TO COURT'

20 September

St Mary's Church Hall, Darlington Street, BATH, BA2 4EB. 3pm. £12 / £11. 01225 463362. "Enchanting music by women of earlier times."

GOOD HABITS

20 September

Marston Church, MARSTON BIGOT, BA11 1DE. 7.30pm. £12 / £5. takeart.org. "The UK's finest indie-folk duo."

REBECCA FERGUSON

23 September

Lighthouse, 21 Kingland Road, POOLE, BH15 1UG. 7.45pm. 01202 280000 / lighthousepoole.co.uk.



ANT LAW & BRIGITTE BERAHA 26 September

Bridport Arts Centre, 9 South Street, BRIDPORT, DT6 3NR. 8pm. £16 / £14 / £7. bridport-arts.com.



The Lovely Eggs

"The most inspiring bands are the ones that can create a world around themselves that is about far more than just the music. The artwork, lyrics, sounds and ethos all merge together perfectly to create its own universe, a secret club. The Lovely Eggs are one such band. And against all the odds, 2025 sees them celebrate their 20th anniversary as a band! Stubbornly and heroically independent, The Lovely Eggs have forged their own path and have achieved mainstream success without ever compromising their DIY ethics."

1 November: Trinity Centre, Trinity Road, BRISTOL, BS2 0NW. 7pm. £21. 01179 351200 / trinitybristol.org.uk.

DAVE KELLY AND BOB HALL 26 September

The Corn Exchange, High East Street, DORCHESTER, DT1 1HF. 7pm. £18 / £16. 01305 266926.

BOURNEMOUTH CONCERT BRASS: 'LAST NIGHT OF THE PROMS'

27 September

The Mowlem, Shore Road, SWANAGE, BH19 1DD. 2.30pm. £16. 01929 422239 / themowlem.com.

WEYMOUTH CONCERT BRASS: 'LAST NIGHT OF THE PROMS'

27 September

Weymouth Bay Methodist Church, WEYMOUTH, DT4 7TH. 7.30pm. £12 / £10. 01305 812637.

THE MOTLEY CREW

27 September

The Mowlem, Shore Road, SWANAGE, BH19 1DD. 8pm. £11. 01929 422239 / themowlem.com. "Sea shanties."

STEPHEN FEARING 28 September

Mission Hall, SUTTON POYNTZ, DT3 6LY. 7.30pm. £19. 01305 837299. "One of Canada's greatest musical storytellers."

THE CORDS + SILK CUTS + PUSHBIKE

30 September

The Cavern, 83 - 84 Queen Street, EXETER, EX4 3RP. 7pm. £8. exetercavern.com.



AXE & TRAP STUDIOS IS A RECORDING FACILITY SITUATED AT THE FOOT OF THE MENDIP HILLS IN WELLS, SOMERSET.

Three performance spaces, 24 channel Trident console, extensive analogue outboard and much more.

Take a tour at
AXEANDTRAPSTUDIOS.COM

Tincleton Gallery

music and contemporary fine art in Dorset

Roger Beaujolais
on vibraphone with
Rob Palmer on
guitar for a jazz
evening
Fri 5 Sep 2025
Sat 6 Sep 2025



Giovanni Lonatti
on classical piano –
Bach, Chopin, Liszt,
Albeniz, Bartok,
and a world
premiere of a new
composition
Fri 17 Oct 2025
Sat 18 Oct 2025

The Old School House, Tincleton, near Dorchester, DT2 8QR
doors open 19:30 • tickets £20
01305 848909 • tinctongallery.com

Music



Adannay: Home is Where the Heart Is

"Backed by incredible musicians, South London soul artist Adannay weaves together soulful melodies, spoken word, and immersive soundscapes to offer a deeply personal, yet universal exploration of what home really means. This show is a celebration of movement, memory, and music - a reminder that home isn't just a place, but something we create through the people we love and the stories we carry. Come to listen, reflect, connect, and maybe even dance in a space where community and togetherness take centre stage."

10 October: Village Hall, HOLFORD, TA5 1SD. 7.30pm. £12 / £9. 01278 741006 / takeart.org.

11 October: Village Hall, CHURCHINFORD, TA3 7QY. 8pm. £12 / £10. 077405 52023 / takeart.org.

12 October: The Old Methodist Church, AXBRIDGE, BS26 2AA. 7pm. £12 / £8. 01934 732376 / takeart.org.

TOM OLLENDORFF TRIO 2 October

Sound Cellar, The Grasshopper, 139
Bournemouth Road, POOLE, BH14
9HT. 7.30pm. £17.50 / £10.
soundcellar.org.

ALAN BARNES QUARTET 3 October

Lighthouse, 21 Kingland Road,
POOLE, BH15 1UG. 7.45pm. 01202
280000 / lighthousepoole.co.uk.
Jazz.

THE LITTLE UNSAID 3 October

The Pound Arts Centre, Pound Pill,
CORSHAM, SN13 9HX. 7.30pm. £16.
01249 701628 / poundarts.org.uk.

CRAIG MILVERTON 3 October

Ilminster Arts Centre, The Meeting
House, East Street, ILMINSTER, TA19
0AN. 7.30pm. £20. 01460 54973 /
themeetinghouse.org.uk. Jazz.



MICHELL, PFEIFFER & KULESH 3 October

Village Hall, IBBERTON, DT11 0EL.
7.30pm. £12.50 / £6. 07771 561099
/ artsreach.co.uk. "Expect a beautiful
music show that carries messages of
peace and female empowerment
from a folk-point of view, featuring
songs known and new, presented in
exquisite, innovative arrangements."

JOHN MADDOCKS JAZZMEN 4 October

St Mary's Church, BEAMINSTER, DT8
3BA. 7.30pm. £15 / £3. 07396
957715.



BRIDPORT — CREWKERNE
ILMINSTER

Concerts IN THE West

— CELEBRATING —
20 YEARS IN 2025

14–15 FEBRUARY ENSEMBLE HESPERI
Magdalena Loth-Hill VIOLIN — Mary-Jannet Leith RECORDERS
Florence Petit CELLO — Thomas Allery HARPSICHORD

14–15 MARCH ALASDAIR BEATSON PIANO

11–12 APRIL MIKELEIZ-ZUCCHI DUO
David Zucchi SAXOPHONE
Iñigo Mikeleiz-Berrade ACCORDION

9–10 MAY TRIO ANIMA
Rosalind Ventris VIOLA — Anneke Hodnett HARP
Matthew Featherstone FLUTE

27–28 JUNE DUO FABULAE
Lorena Cantó VIOLA — Yvain Calvo PIANO

11–12 JULY COLIN SCOBIE VIOLIN &
JÂMS COLEMAN PIANO

26–27 SEPTEMBER MITSU TRIO
Laura Custodio Sabas VIOLIN
Akito Goto CELLO — Tyler Hay PIANO

24–25 OCTOBER VOICE
Victoria Couper — Clemmie Franks — Emily Burn

28–29 NOVEMBER CONSONE QUARTET
Agata Daraškaite VIOLIN — Magdalena Loth-Hill VIOLIN
Elitsa Bogdanova VIOLA — George Ross CELLO

ONLINE booking
www.concertsinthewest.org
concertsinthewest@gmail.com

THE BAND OF PILGRIMS

4 October

The Pound Arts Centre, Pound Pill, CORSHAM, SN13 9HX. 7.30pm. £15. 01249 701628 / poundarts.org.uk.

"Based in Bath and Wiltshire, this acclaimed semi-acoustic group fuses R&B, folk, and blues into soulful originals and reimagined covers."

MICHELL, PFEIFFER & KULESH

4 October

Village Hall, CRANBORNE, BH21 5PZ. 7.30pm. £12.50 / £6. 01725 517028. See 4 October.

TRIO PIERNÉ

7 October

Lighthouse, 21 Kingland Road, POOLE, BH15 1UG. 1.05pm. 01202 280000 / lighthousepoole.co.uk. "A Jane Austen inspired repertoire to mark this commemorative year."

LINDISFARNE

10 October

Wiltshire Music Centre, Ashley Road BRADFORD-ON-AVON, BA15 1DZ. 7.30pm. £36 / £28 / £19.50 / £13.50. wiltshiremusic.org.uk.



NERINA PALLOT

11 October

The Pound Arts Centre, Pound Pill, CORSHAM, SN13 9HX. 7.30pm. £25. 01249 701628 / poundarts.org.uk.

THE HENRIK JENSEN TRIO

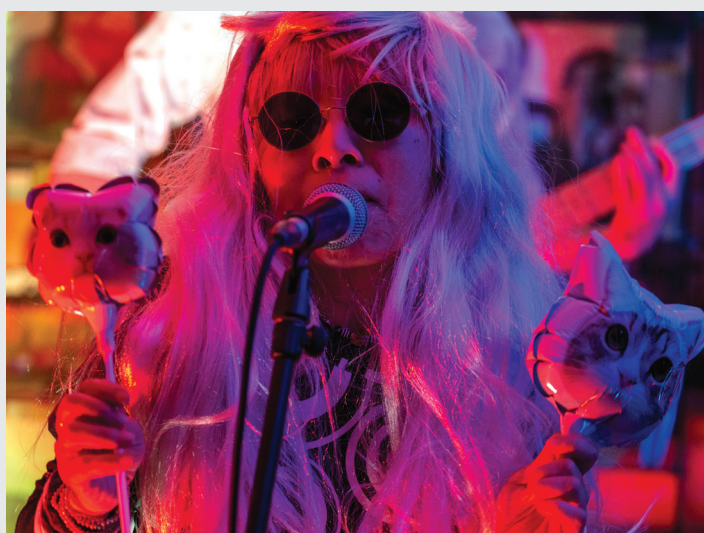
11 October

The Mowlem, Shore Road, SWANAGE, BH19 1DD. 7.30pm. £15. 01929 422239 / themowlem.com "Melodic jazz and rich storytelling."

MARTIN SIMPSON

15 October

Lighthouse, 21 Kingland Road, POOLE, BH15 1UG. 8pm. 01202 280000. "One of England's most revered folk performers."



i-nichi

"i-nichi is Tokyo-based singer and songwriter Seiko Nemoto, with UK-based musicians Billy Shinbone, Philip Collings and Ben Scott Turner joining her to form a full band. Seiko had previously come to the attention of UK audiences when her band Dai-Nichi supported The Chesterfields on tour in 2019, including a fantastic response at London's 100 Club, an experience Seiko could never have predicted when she started following The Chesterfields around the UK in the late 1980s when living in London. Seiko's unique take on songwriting, coupled with a love of Captain Beefheart, Gang of Four, Devo and early UK prog rock has manifested itself previously in a limited edition 7 inch single, titled *Mimiko*, released in May 2024, and after more stints in the studio, a further eleven tracks have been recorded for a debut album *i-nichi*, due for release on the Spinout Nuggets label this September. Produced and engineered by Ben Scott Turner at Axe & Trap Studio in Wells, Somerset, whilst observed by Simon Barber (The Chesterfields), i-nichi's debut album is bound to cause a stir."

6 September: Broadbeat, BROADWAY, near Ilminster, TA19 9JX. 2.45pm. eventbrite.co.uk.

13 September: HMV, The Quedam, YEOVIL, BA20 1EX. 1pm.

13 September: Clocktower Records, St Michael's Estate, BRIDPORT, DT6 3RR. 7pm. £10. bridportandwestbay.co.uk.

18 September: Michael Pennie Gallery, Bath School of Art, Locksbrook Campus, BATH, BA1 3EL. 6.30pm. 07913 809675 / angelgreenham.co.uk.

CLARE DENIZ AND YOON SEOK SHIN

15 October

The Pound Arts Centre, Pound Pill, CORSHAM, SN13 9HX. 1pm. £8. 01249 701628 / poundarts.org.uk.

THE UNRAVELLING WILBURYS

17 October

Hardye Theatre, DORCHESTER, DT1 2ET. 6.30pm. £20 / £18. 01305 266926 / dorchesterarts.org.uk.

LEON HUNT & JASON TITLEY

17 October

Village Hall, HINTON MARTELL, BH21 7HE. 7.30pm. £12.50 / £6. 07476 020522 / artsreach.co.uk.

SPIKEDRIVERS

17 October

Ilminster Arts Centre, The Meeting House, East Street, ILMINSTER, TA19 0AN. 7.30pm. £20. 01460 54973. "Bluesroots at its best."

'LADY NADE SINGS NINA SIMONE'

17 October

Wiltshire Music Centre, Ashley Road BRADFORD-ON-AVON, BA15 1DZ. 7.30pm. £26 / £14.50. 01225 860100 / wiltshiremusic.org.uk.

UKULELE ORCHESTRA OF GREAT BRITAIN

17 October

Lighthouse, 21 Kingland Road, POOLE, BH15 1UG. 7.30pm. 01202 280000 / lighthousepoole.co.uk.

GIOVANNI LONATI

17 and 18 October

Tincton Gallery, The Old School House, TINCLETON, near Dorchester, DT2 8QR. 7.30pm. £20. tinctongallery.com.

CERYS HAFANA

18 October

Wiltshire Music Centre, Ashley Road BRADFORD-ON-AVON, BA15 1DZ. 7.30pm. £21 / £12. 01225 860100 / wiltshiremusic.org.uk. "Blending British folk roots with a fresh, experimental edge, this multi-instrumentalist fills the room with hypnotic soundscapes using the triple harp, haunting vocals, and sounds pulled from the natural world, old Welsh archives, and electronic effects."

frome
concerts
group

"a mesmerising performance" *Britten Pears Arts*

FLORA STRING QUARTET 2 violins, viola & cello Sun 30 Nov 3pm

ARIE DAKESIAN guitar Sun 12 Oct 3pm

DUO DURADO harpsicord and violin Sun 19 Oct 3pm

KASPARAS MIKUZIS piano Sun 9 Nov 3pm

at Rook Lane Chapel
BA11 1DN
Autumn 2025

**Live
classical
music**

TICKETS
Subscription to all 4
concerts £60
Flora String Quartet
£20
Other concerts: £16
www.fromeconcertsgroup.org
07736548831

'LOVE AND LOSS IN ARCADIA'

18 October

St Mary's Church Hall, Darlington Street, BATH, BA2 4EB. 3pm. £12 / £11. bathboxoffice.org.uk. "Pastoral pleasure and pain explored in early songs from England, France and Italy, sung by sopranos Jane Hunt and Philippa Neaverson with Din Ghani on lutes and baroque guitar."

BSO: 'IT'S A LIVING THING'

18 October

Lighthouse, 21 Kingland Road, POOLE, BH15 1UG. 7.30pm. 01202 280000 / lighthousepoole.co.uk. "A symphonic celebration of ELO."

THE UNRAVELLING WILBURYS

18 October

Matthews Hall, Fore Street, TOPSHAM, Exeter, EX4 0HF. 7.30pm. 01392-877895.

CARA DILLON & SAM LAKEMAN

18 and 19 October

The Pound Arts Centre, Pound Pill, CORSHAM, SN13 9HX. 7.30pm. £25 / £22. poundarts.org.uk.

LEON HUNT & JASON TITLEY

19 October

Village Hall, STUDLAND, BH19 3BT. 4pm. £12.50 / £6. 01929 450587.



BLOWZABELLA

23 October

The Corn Exchange, High East Street, DORCHESTER, DT1 1HF. 7pm. £22 / £10. 01305 266926. "Genuinely unique band that make an inimitable, driving, drone-based wall-of-sound. played with a fabulous sense of melody, rhythmic expertise and sheer feeling."

SCOTT MATTHEWS

23 October

Lighthouse, 21 Kingland Road, POOLE, BH15 1UG. 8pm. 01202 280000 / lighthousepoole.co.uk.



Kathryn Roberts and Sean Lakeman

"Duos come and duos go, and some nurture and finetune their art and watch it grow into something totally original and captivating. For three decades Kathryn Roberts and Sean Lakeman's partnership has proved personal, permanent and pivotal. Twice voted BBC Radio 2 Folk Award Best Duo, this multi award-winning musical couple continue to exude timeless class with their exquisite brand of traditional and contemporary acoustic music."

9 October: The Corn Exchange, High East Street, DORCHESTER, DT1 1HF. 7pm. £22 / £20. 01305 266926 / dorchesterarts.org.uk.

10 October: Ilminster Arts Centre, The Meeting House, East Street, ILMINSTER, TA19 0AN. 7.30pm. £20 / £18. 01460 54973 / themeetinghouse.org.uk.

CHRIS WHILE AND JULIE

MATTHEWS

23 October

The Pound Arts Centre, Pound Pill, CORSHAM, SN13 9HX. 7.30pm. £16.50. 01249 701628. "Celebrated British singer-songwriters."

PETER OAKES AND SALLY FLANN

24 October

The Corn Exchange, High East Street, DORCHESTER, DT1 1HF. 10.30am. Free entry. 01305 266926.

WISHBONE ASH

25 October

Cheese & Grain, Market Yard, FROME, BA11 1BE. 7.30pm. £25.50. cheeseandgrain.com.

AK & THE RED KITES + THE WHITLEY LAKE BAND + NIA NICHOLLS

30 October

Lighthouse, 21 Kingland Road, POOLE, BH15 1UG. 7.30pm. 01202 280000 / lighthousepoole.co.uk.

GOOD HABITS

30 October

Village Hall, PENSELWOOD, BA9 8LS. 7.30pm. £12 / £9. 01747 840680. See 20 September.

GOOD HABITS

31 October

Village Hall, KILVE, TA5 1EA. 7.30pm. £13 / £10. 07814 613908 / takeart.org. See 20 September.

STEVE KNIGHTLEY & THE WINTER YARDS BAND

31 October

Lighthouse, 21 Kingland Road, POOLE, BH15 1UG. 7.45pm. 01202 280000. "This powerhouse ensemble promises a rich, dynamic live experience, breathing new life into Steve's critically acclaimed 'Winter Yards' album."

THE KAHUNAS

31 October

The Ropemakers, 36 West Street, BRIDPORT, DT6 3QP. 8.30pm. 01308 421255 / theropemakers.com.

CRAIG MILVERTON

31 October

Ilminster Arts Centre, The Meeting House, East Street, ILMINSTER, TA19 0AN. 7.30pm. £20. 01460 54973 / themeetinghouse.org.uk. Jazz.

Artsreach

MUSIC, THEATRE & MORE TOURING ACROSS DORSET

Visit www.artsreach.co.uk to view our full programme of events and venues



Registered charity no. 1058198



Michell, Pfeiffer & Kulesh

Flowers

3 - 5 October



Worklight Theatre

It's the Economy, Stupid!

10 - 12 October



Living Spit

Too Many Greek Myths

13 & 15 October



Duane Forrest

How Reggae changed the world

19 - 20 October



Tangle Theatre

Julius Caesar

24 October

Performance

July and August 2025



'LITTLE WOMEN'

3 - 13 September

Salisbury Playhouse, Malthouse Lane, SALISBURY, SP2 7RA. 7.30pm (matinees 2.15pm). £12. 01722 320333 / wiltshirecreative.co.uk.

"Step into the world of sisterhood, courage, ambition, as the March sisters - tomboy Jo, beautiful Meg, sensitive Beth, and spoiled Amy - navigate the challenges of the Civil War era, forging unbreakable bonds of love and family."

10 PARISHES FESTIVAL

6 - 14 September

Various locations in and around WIVELISCOMBE.

10parishesfestival.org.uk. "Festival of visual and performing arts."

'STEWART LEE VS THE MAN-WOLF'

8 and 9 September

Lighthouse, 21 Kingland Road, POOLE, BH15 1UG. 7.45pm. 01202 280000 / lighthousepoole.co.uk.

'ART OF ANDALUCIA'

10 September

Lighthouse, 21 Kingland Road, POOLE, BH15 1UG. 7.30pm. lighthousepoole.co.uk. Dance.

'POTLICHER'

11 September

The Mowlem, Shore Road, SWANAGE, BH19 1DD. 7.30pm. £17 / £15. themowlem.com.

'ORPHEUS AND THE UNDERWORLD'

11 - 13 September

Nothe Fort, Barrack Road, WEYMOUTH, DT4 8UF. Thursday 8.30pm, Friday 7.30pm, Saturday 2.30 and 7.30pm. £15 / £12 / £8. teatrovivo.co.uk.



JEEVA PRAHAAVA 'LIFE FLOW'

Inside Out Dorset

"Activate Performing Arts' biennial outdoor arts festival, *Inside Out Dorset* comprises of performances, installations, parades and more at five sites across Dorset and the surrounding areas. This year's festival features artists from Catalonia, India, the UK, as well as Dorset-based companies. The programme includes a new *Giant* for the Dorset landscape, the county's response to the international *River of Hope* arts-based learning project, a remarkable new sound trail in a working forest, and an amazing, site-specific promenade performance against the backdrop of a Georgian seafront. This year producers are also proud to present a programme of Catalan artists in Corfe Castle. These exceptional European performers will wow audiences with skill and precision in unique and mesmerising outdoor shows. *Idiòfona* will take place in the grounds of Corfe Castle and sees performer Joan Català gather an audience to build an incredible, large sound installation. Head to Sandy Hill Arts to see *We Fear* from Eva Marichalar-Freixa and Jordi Duran Roldós with local theatre company Dorsetborn. You'll be able to see a spinning top world champion in the car park at Corfe Castle Village Hall in the show *Poi*. Plus, at St Edward's Church, the final Catalan company Toc de Fusta, present *Arrels* - a collection of twenty wooden games based on various cultural traditions."

12 - 21 September: CHRISTCHURCH (12 - 15 September), MOORS VALLEY COUNTRY PARK AND FOREST (13 - 21 September), YEOVIL (12 - 13 September), WEYMOUTH (18 - 20 September) and CORFE CASTLE (20 - 21 September)

insideoutdorset.co.uk

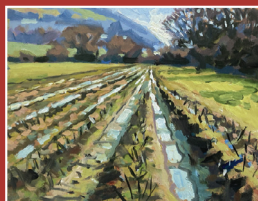
Shaftesbury Arts Centre



'A Real Pain' (15)

Film

5 September @ 7.30pm
£7.50 / £6.50 / £5.50



'Common Ground and Waves'

10 - 23 September
10am - 4pm daily



'Tosca'

Royal Opera Live Recording
1 October @ 6.45pm
£15 / £12.50



Belle Street 'The Ratpack Gals'

4 October @ 7.30pm
£18 / £15



The Fourmost 'A Ticket to Ride'

18 October @ 7.30pm
£22 / £18

11 - 13 Bell Street, Shaftesbury, Dorset SP7 8AR [f](https://www.facebook.com/shaftesburyartscentre) [X](https://www.x.com/shaftesburyartscentre) [ig](https://www.instagram.com/shaftesburyartscentre) 01747 854321 • shaftesburyartscentre.org.uk

Performance

'BORN IN THE USA'

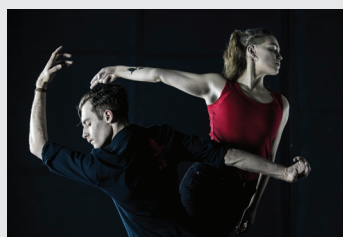
12 September

The Corn Exchange, High East Street, DORCHESTER, DT1 1HF. 7pm. £15 / £13. 01305 266926. "Retired Ford factory worker Jimmy Vandenburg works alone in his garage servicing the classic American cars of his youth."

TOM MARSHMAN: 'SECTION 28 AND ME'

12 September

Royal Manor Theatre, 138 Fortuneswell, PORTLAND, DT5 1LT. 7.30pm. £8.50. b-side.org.uk. "A playful, honest, and heartfelt portrait exploring the legacy of Section 28 - legislation that silenced queer voices in schools from 1988 to 2003."



'GREEN APPLES'

12 September

Portland Amateur Boxing Club, East Street, Fortuneswell, PORTLAND, DT5 1NF. 4pm. £3.50. 01305 568044 / b-side.org.uk. "Choreographed by Mark Bruce to the music of the White Stripes, a powerful duet performed in a boxing ring."

LUKE WRIGHT: 'PUB GRUB'

13 September

Royal Manor Theatre, 138 Fortuneswell, PORTLAND, DT5 1LT. 7.45pm. £15. b-side.org.uk. "Poet Luke Wright conjures up a world of Tuesday lunchtimes and small town boozers in poems that burst with inventive language."

'THE BARD OF DORCHESTER'

14 September

The Corn Exchange, High East Street, DORCHESTER, DT1 1HF. 1.30pm. 01305 266926 / dorchesterarts.org.uk. "Storytelling, poetry and performance as six finalists compete for the title of Bard of Caer Dur / Dorchester 2025."



Nick Helm: No One Gets Out Alive

"Ready for the best damn night of your life? Nick Helm, the ultimate all-round entertainer, returns with his unforgettable, hilarious, and life-changing show."

19 September: The Pound Arts Centre, Pound Pill, CORSHAM, Wiltshire, SN13 9HX. 7.30pm. £18.60 / £16. poundarts.org.uk.



'THE SIGNALMAN'

15 - 20 September

Salisbury Playhouse, Malthouse Lane, SALISBURY, SP2 7RA. 7.30pm (matinees 2.15pm). £12. 01722 320333. "New extended adaptation of Charles Dickens' nerve-tingling masterpiece."

'LITTLE WOMEN'

16 - 20 September

Lighthouse, 21 Kingland Road, POOLE, BH15 1UG. 7.45pm (Wednesday, Thursday and Saturday matinees 2.30pm). 01202 280000. See 3 - 13 September.

'CABARET WITH BALLS'

18 September

The Corn Exchange, High East Street, DORCHESTER, DT1 1HF. 7pm. £18 / £16. 01305 266926 / dorchesterarts.org.uk. "Charlie Bicknell and Louise Innes embark on a new show with their own inimitable mash of the irreverent and surreal."

HELEN BAUER: 'BLESS HER'

18 September

Lighthouse, 21 Kingland Road, POOLE, BH15 1UG. 7.30pm. 01202 280000. Comedy.

JUSTIN MOORHOUSE + SUZY BENNETT + HATTY PRESTON

20 September

Hardye Theatre, DORCHESTER, DT2 1ET. 6.30pm. £21 / £19. dorchesterarts.org.uk. Comedy.

'SHERLOCK HOLMES: THE LAST ACT'

20 September

Lighthouse, 21 Kingland Road, POOLE, BH15 1UG. 8pm. 01202 280000 / lighthousepoole.co.uk.

'CODE BREAKERS'

20 September

Backyard Theatre, 5 Anchor Street, WATCHET, TA23 0AZ. 7.30pm. £16.50. 0333 666 3366.

ERTH PRAZE: 'AUTUMN EQUINOX'

22 September

The Chapel in the Garden, 49 East Street, BRIDPORT, DT6 5DX. 7pm. £10. 07853 568517. "A celebration of the natural world in poetry and music."



REBECCA ORTEGA FLAMENCO COMPANY: 'RAICES'

25 September

The Corn Exchange, High East Street, DORCHESTER, DT1 1HF. 7pm. £20 / £18. 01305 266926 / dorchesterarts.org.uk. Dance.

SCARLETT SMITH: 'ANY OBJECTIONS?'

26 September

Village Hall, EAST QUANTOXHEAD, TA5 1EG. 8pm. £10 / £7. 07876 747578 / takeart.org. "Live looping harp comedy!"



PERFECT POSTERS



AMAZING GICLÉE PRINTS

SCANNING • PHOTOGRAPHY • CALENDARS • INVITATIONS • BOOKMARKS • BROCHURES • FLYERS • STICKERS
BANNERS • FOAMEX SIGNS • LETTERHEADS • BUSINESS CARDS • FOLDERS • DESKPADS • BESPOKE ITEMS



POSTCARDS AND GREETING CARDS



FLAYMOUSE MEDIA

01935 479 453

WWW.FLAYMOUSE.COM

8 BUCKLAND ROAD, YEovil, SOMERSET BA21 5EA

Performance

'CROONERS'

26 September

Lighthouse, 21 Kingland Road, POOLE, BH15 1UG. 7.45pm. lighthousepoole.co.uk. "Witty and exhilarating show full of hilarious one liners, laugh out loud silliness and superb musical numbers."

'BLITHE SPIRIT'

2 - 25 October

Salisbury Playhouse, Malthouse Lane, SALISBURY, SP2 7RA. 7.30pm (matinees 2.15pm). £12. wiltshirecreative.co.uk. See page 4.

'MURDER SHE DIDN'T WRITE'

3 October

Lighthouse, 21 Kingland Road, POOLE, BH15 1UG. 7.45pm. 01202 280000 / lighthousepoole.co.uk.

'A COUNTRY MUSIC SONGBOOK'

3 October

The Corn Exchange, High East Street, DORCHESTER, DT1 1HF. 7pm. £25 / £23. 01305 266926.

CHRIS DIFFORD

5 October

Hardye Theatre, DORCHESTER, DT1 2ET. 6.30pm. £27 / £25. 01305 266926. "Music and storytelling."

BOBAK CHAMPION: 'I'M MUSLAMIC DON'T PANIK'

7 October

School Theatre, GILLINGHAM, SP8 4QR. 7pm. £12.50 / £6. 01747 822222. "A hilarious and heart-felt story of one man's journey to Iran to discover his cultural heritage."



'BLOOD BROTHERS'

7 - 11 October

Lighthouse, 21 Kingland Road, POOLE, BH15 1UG. 7.45pm (Wednesday, Thursday and Saturday matinees 2.30pm) 01202 280000.

'CRAIG MITCHELL'S JUKEBOX MASHUP'

9 October

The Pound Arts Centre, Pound Pill, CORSHAM, SN13 9HX. 7.30pm. £14 / £12. poundarts.org.uk. "Hilarious, fast-paced musical comedy."

'THE 39 STEPS'

9 and 10 October

The Mowlem, Shore Road, SWANAGE, BH19 1DD. 7.30pm. £19 / £17. themowlem.com. "Hilarious adaptation of Hitchcock's thriller."

'TATTOO'

10 October

The Pound Arts Centre, Pound Pill, CORSHAM, SN13 9HX. 7.30pm. £15. 01249 701628 / poundarts.org.uk. "Seven outsider artists share raw, fearless stories from prison, addiction, and recovery."

WORKLIGHT THEATRE: 'IT'S THE ECONOMY, STUPID!'

10 October

Village Hall, BUCKLAND NEWTON, DT2 7BZ. 7.30pm. £12.50 / £6. artsreach.co.uk. "Armed with bags, boxes and an old board game, Joe Sellman-Leava and Dylan Howells embark on a quest to uncover how the economy wins elections, and why the force that dominates our lives is so bloody complicated!"

WORKLIGHT THEATRE: 'IT'S THE ECONOMY, STUPID!'

11 October

Village Hall, BRIANTSPUDDLE, DT2 7HT. 7.30pm. £13 / £6. artsreach.co.uk. See 10 October.



RIA LINA

11 October

The Corn Exchange, High East Street, DORCHESTER, DT1 1HF. 7pm. £18 / £16. 01305 266926 / dorchesterarts.org.uk. Comedy.

WORKLIGHT THEATRE: 'IT'S THE ECONOMY, STUPID!'

12 October

Village Hall, BURTON BRADSTOCK, DT6 4QD. 7pm. £14 / £7. artsreach.co.uk. See 10 October.

'TOO MANY GREEK MYTHS'

13 October

The Mowlem, SWANAGE, BH19 1DD. 6pm. £14 / £6. 03336 663366 / artsreach.co.uk. "Join Living Spit as they tackle everything from Hades to Heracles, Midas to Medusa, with their trademark blend of hare-brained humour, questionable wigs and a total disregard for historical accuracy."

'TOO MANY GREEK MYTHS'

14 October

The Corn Exchange, High East Street, DORCHESTER, DT1 1HF. 7pm. £15 / £13. 01305 266926. See 13 October.

'TOO MANY GREEK MYTHS'

15 October

Village Hall, HALSTOCK, BA22 9SG. 7.30pm. £12.50 / £6. 01935 891744 / artsreach.co.uk. See 13 October.

JENNY ÉCLAIR

16 October

Lighthouse, 21 Kingland Road, POOLE, BH15 1UG. 7.30pm. 01202 280000. Comedy.

'JOURNEY TO THE CENTRE OF THE EARTH'

17 October

The Pound Arts Centre, Pound Pill, CORSHAM, SN13 9HX. 7.30pm. £15. 01249 701628 / poundarts.org.uk.

lighthouse

Arts & Entertainment | Poole



TUE 14 OCT

Richard Chappell: Hot House

The latest uplifting work from Richard Chappell Dance's outstanding ensemble conjures the intensity of a fire sparking, burning, and reducing to embers before being revived. A love letter to how music gives us the irresistible urge to move and feel.



WED 15 OCT

Yippee Ki Yay

THE PARODY CELEBRATION OF DIE HARD

Revisit a classic 1980s action blockbuster with a unique and engaging performance poetry show. This funny solo recreation by Die Hard uber-fan and London Poetry Slam winner Richard Marsh is performance in its purest form.



SAT 18 OCT

Drum

Fusing storytelling, music and dance with archival material, this joyful, poignant fiction tells the story of how London photographer James Barnor met BBC broadcaster Mike Eghan for the very first time, capturing a unique snapshot of London in the swinging 60s.



MON 10 - SAT 15 NOV

Emma

We're celebrating Jane Austen's 250th anniversary in fitting style with a new stage adaptation of her enduring comedy of manners. Featuring memorable characters and a star-studded cast, will Emma herself be swept up in true love's wake?



WED 19 NOV

Terje Isungset Ice Quartet

The ice music pioneer, Terje Isungset, returns to the UK with his exquisite quartet in a tribute to the most important thing in the world - nature. Prepare to be transported by the extraordinary, beautiful and ethereal sounds of ice.

! Different every day



Julius Caesar

"Tangle Theatre's fast-moving production drives through the political chaos, power struggles and friendship betrayals at the heart of Shakespeare's greatest thriller. Adapted and directed by Anna Coombs, with John Pfumojena's original music performed live on stage, this high-energy production brings African-inspired storytelling into the heart of ancient Rome."

16 October: Lighthouse, 21 Kingland Road, POOLE, BH15 1UG. 8pm. 01202 280000 / lighthousepoole.co.uk.

17 October: Bridport Arts Centre, 9 South Street, BRIDPORT, DT6 3NR. 7.30pm. 01308 424204 / bridport-arts.com.

18 October: Village Hall, CROSCOMBE, BA5 3RJ. 7.30pm. £14 / £9 / £6. takeart.org.

24 October: The Exchange, STURMINSTER NEWTON, DT10 1FH. 7.30pm. £14 / £6. 01258 475137 / artsreach.co.uk.

25 October: The Pound Arts Centre, Pound Pill, CORSHAM, SN13 9HX. 7.30pm. £16 / £15. 01249 701628 / poundarts.org.uk.

SCARLETT SMITH: 'ANY OBJECTIONS?'

17 October
East Quay Kitchen, East Quay,
Harbour Road, WATCHET, TA23
0AQ. 7.30pm. £5. 01984 263103.
See 26 September.

'DRUM'

18 October
Lighthouse, 21 Kingland Road,
POOLE, BH15 1UG. 8pm.
lighthousepoole.co.uk.

'FIRESIDE'

21 October
School Field, GILLINGHAM, SP8
4QR. 6pm. £12.50 / £6. 01747
822222. "Nikki & JD in collaboration
with Lost Dog create an outdoor
show that combines breathtaking
acrobatics, dance, theatre and live
music to re-enact an original horror
story, all told around a real campfire.
modern re-telling of that ancient
epic, Beowulf."

'AUSTENTATIOUS'

24 October
Lighthouse, 21 Kingland Road,
POOLE, BH15 1UG. 7.30pm. 01202
280000. "Hilarious new Jane Austen
novel, inspired entirely by a title from
the audience."

'ANTONY AND CLEOPATRA'

25 October
The Merlin Theatre, Bath Road,
FROME, BA11 2HG. 7.30pm. £16.
shakespearealive.com.

'FIRESIDE'

26 October
Village Hall, ROADWATER, TA23
0RE. 7.30pm. £10 / £5. takeart.org.
See 21 October.

'WILD'

26 October
Village Hall, BROADMAYNE, DT2
8EW. 7.30pm. £12.50 / £6. 07443
659912 / artsreach.co.uk. "New
theatre production exploring what
'wild' means to us - in the natural
world, in our towns and cities, and
within ourselves."

'WILD'

29 October
Village Hall, WOOTTON FITZPAINE,
DT6 6NF. 7.30pm. £12.50 / £6.
artsreach.co.uk. See 26 October.

'DON'T LOOK NOW'

29 October - 15 November
Salisbury Playhouse, Malthouse
Lane, SALISBURY, SP2 7RA. 7.30pm
(matinees 2.15pm). £12. 01722
320333. "A couple devastated by
loss escape to the shadowed canals
of Venice, hoping to leave their past
behind - but the city has other plans."

'WILD'

31 October
Village Hall, NORTON SUB
HAMDON, TA14 6SF. 7pm. £12.
takeart.org. See 26 October.



HENRY NORMAL: 'THE SLIDE SHOW'

31 October
The Pound Arts Centre, Pound Pill,
CORSHAM, SN13 9HX. 7.30pm.
£19.50 / £15. 01249 701628 /
poundarts.org.uk. "A live performed
memoir featuring cautionary verse by
poet and producer Henry Normal,
offering an intimate adventure into
understanding the human condition
from the inside."

ONE-STOP DESIGN, PRINT & MAILING

We're friendly and knowledgeable.
We're not flash or fancy, but we are really good at what we do.

Easy. Affordable. Dependable. Local.

Leaflets, flyers, brochures, booklets, magazines, folders and more.
Design, print and mailing – all in one place.

What can we print for you today?

enquiries@bishops.co.uk | bishops.co.uk | 023 9233 4900



Evolver Magazine

Our Wessex Sponsors and Outlets



CC@ARTS
ARNOLFINI
EST. 1961

ART and BEYOND

Athelhampton
HOUSE & GARDENS

aztecmedia

b-side



BlackSwanArts
Boilerhouse GALLERY

BOURNEMOUTH
ARTS
CLUB

BOURNEMOUTH
symphony orchestra

BRIDPORT
ARTSCENTRE

BULL MILL STUDIO

Concerts
IN THE West
DorchesterArts



EAST
QUAY

HEART OF
THE TRIBE
ART GALLERY

ILMINSTER
arts
centre
AT THE MEETING HOUSE

Kit Glaister

lighthouse
Arts & Entertainment · Poole

Pound Arts

RWA

Shaftesbury
Arts Centre



The Slade Centre

SLADERS YARD

SOW
somer
set
art works

Sou'-Sou'-West



THG
Thelma
Hulbert
Gallery

Tincleton Gallery

Walford Mill
Crafts

WILTSHIRE
CREATIV

YEOVIL
ART SPACE

Evolver Magazine

EVOLVER MAGAZINE IS AVAILABLE **FREE** AT THE FOLLOWING WESSEX OUTLETS:

ABBOTSBURY: Abbotsbury Studio, Clare Hawkes Fine Art, Dansel Gallery.
ATHELHAMPTON: Athelhampton House.
AXMINSTER: Archway Bookshop, Heritage Centre, Unique Framcraft.
BATH: 44AD, Bath Artists' Studios, Beaux Arts, The Edge / ICIA, Holburne Museum, University of Bath, Victoria Art Gallery.
BEAMINSTER: Art and Beyond, Beaminster Books, Yarn Barton Centre.
BLANDFORD: Blandford Fashion Museum, Bryanston Arts Centre, Forum Café, Forum Framers. BOURNEMOUTH: All Fired Up, Artcetera, Courtenay's Fine Art, Flux Framing, Pavilion Dance, Re-Imagine, Royal Bath Hotel, Russell-Cotes Museum & Art Gallery.
BOWER HINTON: The Hollies Hotel.
BRADFORD ON AVON: Wiltshire Music Centre. BRIDGWATER: Bridgwater Arts Centre, Bridge Gallery, Engine Room.
BROADWINDSOR: Record Vault.
BRIDPORT: Art Unlimited, Bridport Arts Centre, Bridport Old Books, The Bull Hotel, Clocktower Records, Literary and Scientific Institute, Lyric Theatre, Millside Picture Framing. BRISTOL: Arnolfini, Bristol Beacon, Bristol Fine Art, Centrespace, Clifton Contemporary, Clifton Fine Art, Create Centre, Folk House, Jamaica Street Artists, Lime Tree Gallery, Museum & Art Gallery, New Cut Coffee, North Street Gallery, PRSC Gallery, RWA, Spike Island, St George's, Tobacco Factory, Trinity Centre, UWE, Watershed. BRUTON: At The Chapel, Bruton Museum. BUDLEIGH SALTERTON: Brook Gallery. BURNHAM ON SEA: Princess Theatre and Arts Centre, Seabreeze Gallery. CASTLE CARY: Bailey Hill Bookshop, David Simon Contemporary. CHARD: Art Café, Hornsbury Mill. CHEDDAR: Cheddar Art School. CHEDDON FITZPAINE: Hestercombe Gallery. CHIPPENHAM: Chippenham Museum. CHRISTCHURCH: Hatch Gallery, Red House Museum. CLEVEDON: Studio 3 Gallery. CORFE CASTLE: Boilerhouse Gallery, Mortons House Hotel, Seasons Green, Village Stores. CORSHAM: Pound Arts. CREWKERNE: Art and Beyond. CROCKERTON: Bull Mill Arts. CROWCOMBE: Halsway Manor. CULLOMPTON: Cullompton Community College. DEVIZES: Wiltshire Museum. DORCHESTER: Activate, Arts

Development Company, Artsreach, Corn Exchange, Dorset Museum, Duke's, Frank Herring & Sons, Gallery on The Square, Shire Hall Museum, The Little Keep, Vinyl Van. EAST LAMBROOK: East Lambrook Manor Gardens. EXETER: Academy of Music, Barnfield Theatre, Exeter School of Art, Glorious Art Cafe, Phoenix Arts Centre, Royal Albert Memorial Museum, Southgate Gallery. FROME: Bat Print Studio, Black Swan Arts, Cheese and Grain, Kobi & Teal, Merlin Theatre, Peradam, Raves From The Grave, Rook Lane Arts, Rise Centre. GILLINGHAM: The Idea Works, The Slade Centre. GLASTONBURY: Abbey Muse Gallery, Facets Of Avalon, Glastonbury Abbey, Glastonbury Galleries, Heart Of The Tribe Gallery, Red Brick Building, Rural Life Museum. HATCH BEAUCHAMP: Close Ltd. HESTERCOMBE: Hestercombe Gallery. HONITON: The Beehive, Thelma Hulbert Gallery. ILMINSTER: Ilminster Arts Centre, The Millhouse. IWERNE MINSTER: The Writer's Block. KEYNSHAM: Chocolate Quarter. LANGPORT: Art Tea Zen, Great Bow Wharf, Shakspeare Glass. LYME REGIS: Blue Lias Gallery, Coombe Street Gallery, Fine Art & Framing, Lyme Regis Museum, Malthouse Gallery, Marine Theatre. LYTCHETT MINSTER: Barn Cafe, Courtyard Craft Centre. MARLBOROUGH: Framemakers. MARTOCK: Martock Gallery, Yandles Cafe. MILVERTON: The Coffee Mill. MINEHEAD: Courtyard Framing, Leo Davey Gallery, Regal Theatre. MORCOMBELAKE: Artwave West. MUCHELNEY: Muchelney Pottery. NORTH CURRY: Community Café. OTTERTON: Otterton Mill. PEWSEY: McNeill Gallery. PEWSEY: McNeill Gallery. POOLE: Arts University Bournemouth, Big Brother Records, Boiler Room Records, Canvas Gallery, Guildhall Gallery, Josephine Wall Gallery, Lighthouse, Gallery Upstairs, Originals, Poole Museum, Towngate Gallery And Framing. PORLOCK: Churchgate Gallery. PORTLAND: B-Side Outpost, The Beehive, White Stones. SALISBURY: City Hall, Fisherton Mill, Salisbury Arts Centre, Salisbury Museum, Salisbury Playhouse, Studio 53, Vanner Gallery, Wiltshire Gallery, Young Gallery. SEATON: Terrace Arts Café. SEAVINGTON: Village Shop. SHAFESBURY: Down The Steps, The Cygnet, Grosvenor Hotel, Pictureframes, Shaftesbury Arts Centre. SHEPTON MALLET: Kilver Court, One Craft Gallery. SHERBORNE: Caffè Nero, Old Barn Framing Gallery, The Beat & Track, The

Sherborne, Winstone's. SIDMOUTH: East Devon Art Academy, Flo and Us, Kennaway House, Winstone's. SOMERTON: ACE Arts, Gifted Company & Gallery Coffee Shop. SOUTH PETHERTON: David Hall. STALBRIDGE: Dike & Sons. STOBOROUGH: Furzebrook Studios. STOKE ST GREGORY: Willow & Wetlands Centre. STOURHEAD: First View Gallery. STREET: Millfield School Atkinson Gallery, Strode Theatre. STURMINSTER NEWTON: The Exchange, Poet's Corner, Wessex Photographic. SWANAGE: Ballard and Bay Gallery, Durlston Castle, Mowlem Theatre, Mulberry Tree Gallery, Quarr Gallery. SYMONDSBURY: Sou'-Sou'-West. TAUNTON: Arts Hub, Brewhouse Theatre, CIC CIC, Fine Art And Framing, Jane Armour Trading, Museum of Somerset, Quantock Art And Framing, Queen's College, Tacchi-Morris Arts Centre, University Centre Somerset. TINCLETON: Sculpture by the Lakes, Tincleton Gallery. TISBURY: Messums Wiltshire. TIVERTON: Lantic Gallery. TROWBRIDGE: Arc Theatre, Court Street Gallery, The Lamb, Trowbridge Museum. WAREHAM: Priory Hotel, Purbeck Artisan Yard, Rex Cinema. WARMINSTER: Athenaeum Centre. WATCHET: East Quay. WELLINGTON: Old Brick Workshop. WELLS: A2 Gallery, Andelli Art, Bishop's Eye, Heritage Courtyard Gallery and Studios. WEST BAY: Sladers Yard. WEST COKER: Lanes, Old School Room. WESTHAY: Somerset Crafts. WESTON-SUPER-MARE: Frame Station, Playhouse, Weston College. WEYMOUTH: Cove Gallery, Happy Crab Gallery, Unbearable Design Ltd, Weymouth College, Weymouth Pavilion. WILLITON: J Gliddon & Sons. WIMBORNE: Allendale House, Square Records, Walford Mill Craft Centre. WINCANTON: Paper Trees. WIVELISCOMBE: Community Office. WORTH MATRAVERS: Burngate Purbeck Stone Centre. YEOVIL: EPS, Westlands Entertainment Venue, Yeovil Art Space. YETMINSTER: Old School Gallery.

Plus selected TOURIST INFORMATION CENTRES and LIBRARIES throughout Wessex

We are always on the lookout for new EVOLVER OUTLETS. If you are running a venue in Wessex (see map on previous page) that is regularly frequented by arts and culture lovers, please email simon@evolver.org.uk for further information.

EVOLVER SPONSORS

ACE Arts
Arnolfini
Art And Beyond
Athelhampton House
Aztec Media
B-Side
Bishops Printers
Black Swan Arts
Boilerhouse Gallery
Bournemouth Arts Club
Bournemouth Symphony Orchestra
Bridport Arts Centre
Bull Mill Studio
Concerts in the West
Dorchester Arts
Dorset Visual Arts
East Quay
Heart of the Tribe Gallery
Ilminster Arts Centre
Kit Glaisyer Fine Art
Lighthouse
Pound Arts
Royal West of England Academy
Shaftesbury Arts Centre
The Slade Centre
Sladers Yard
Somerset Art Works
Sou'-Sou'-West Gallery
South West Art Courses
Thelma Hulbert Gallery
Tincleton Gallery
Walford Mill
Wiltshire Creative
Yeovil Art Space

Our EVOLVER SPONSORS make Evolver Magazine possible. We couldn't do it without their ongoing support and advertising, so we make sure they get priority coverage in these pages and in our Instagram posts.

If you'd like to join them, please email simon@evolver.org.uk to find out about our Sponsorship offer (for example our quarter page Evolver Sponsors pay £190 instead of £260 for each bi-monthly advert).

FREE LISTINGS

Exhibition and performance listings can be uploaded at evolver.org.uk or emailed to listings@evolver.org.uk

Please send ALL information in the following order:
Event, date(s), venue, address (including postcode), times, admission fee (if any), contact number / website, up to 30 words about your event

EVOLVER MAGAZINE 145

THE WESSEX ARTS AND CULTURE GUIDE

Editor SIMON BARBER

Assisted by SUZY RUSHBROOK
suzy@evolver.org.uk

Evolver Writer

FIONA ROBINSON / fionarobinson.com

Graphic Design SIMON BARBER

Front Cover

ADANNAY

Photograph by Joseph Murphy

DEADLINE FOR EVOLVER MAGAZINE 146

November and December 2025

SUNDAY 5 OCTOBER



EVOLVER MEDIA

8 BUCKLAND ROAD, PEN MILL TRADING ESTATE,
YEOVIL, SOMERSET BA21 5EA

Email simon@evolver.org.uk

Telephone 01935 808441

Website evolver.org.uk

Hosted by AZTEC MEDIA

Instagram [evolvermagazine](https://www.instagram.com/evolvermagazine)

Published by EVOLVER MEDIA LIMITED

Pre-Press by FLAYDEMOUSE

01935 479453 / flaydemouse.com

Printed by BISHOPS PRINTERS

bishops.co.uk

SPINOUT
NUGGETS

i-nichi

BROADBEAT, BROADWAY
SATURDAY 6 SEPTEMBER, 2.45pm

HMV, YEOVIL
SATURDAY 13 SEPTEMBER, 1.00pm

CLOCKTOWER RECORDS, BRIDPORT
SATURDAY 13 SEPTEMBER, 7.30pm

MICHAEL PENNIE GALLERY, BATH
THURSDAY 18 SEPTEMBER, 6.30pm



WILTSHIRE CREATIVE

Stories From an Invisible Town

Friday 3 October
Salisbury Arts Centre

A wildly imaginative,
darkly comic journey
through childhood.



Don Quixote (is a very big book)

Saturday 4 October
Salisbury Arts Centre

A surreal, puppet-filled,
comic quest that battles
reality, relevance, and
ageing.



Monster Ceilidh Band

Saturday 18 October
Salisbury Arts Centre

Experience bold electric
experimentation with
these electro-folk
innovators.



Three Little Vikings

Saturday 25 October
Salisbury Arts Centre

Three brave little Viking
girls save the day in this
bold and funny adventure
story for little rebels.



Don't Look Now

29 Oct – 15 Nov
Salisbury Playhouse

Grief haunts Venice's
shadows in Nell
Leyshon's gripping new
adaptation of the classic
Du Maurier story.



Book now at
wiltshirecreative.co.uk

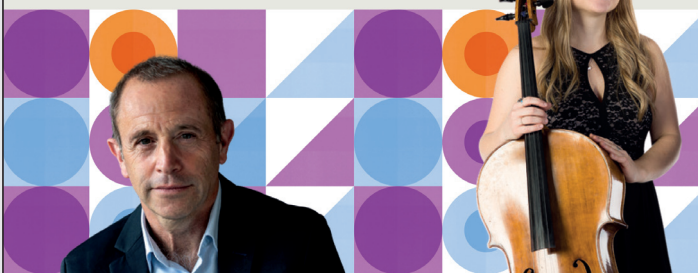
Discover
what's on!



 **bournemouth
symphony orchestra**

**Concert Season
2025/26**

Did you know that you have
one of the **UK's top orchestras**
right on your doorstep?



With live symphonic performances throughout
the season in **Poole, Exeter, Bristol,**
Weymouth, Barnstaple, Sherborne, Taunton
...and many more across the South West!

bsolive.com

01202 669925

THE DORSET OPEN 2025



Dorset
Museum
& Art Gallery

A major new Arts Open for Dorset

Produced by DORSET VISUAL ARTS

18 October – 30 November

Dorset Museum & Art Gallery

High West Street, Dorchester, DT1 1XA

Open 10am - 5pm, last entries 4pm

dorsetmuseum.org / dorsetvisualarts.org

Dorchester Arts



EVOLVER
magazine

C L O S E



SHERBORNE
TIMES

Supported by Dorchester Arts, Arts in Hospital, Evolver Magazine, Close Ltd, Mount Collective, Sherborne Times



DVA is supported by Organisation Revenue Support Funding from Dorset Council