

THE **FREE** WESSEX ARTS AND CULTURE GUIDE

EVOLVER magazine



January and February 2026



Emma Talbot — Everything is Energy (detail), 2025. Courtesy of the artist. © Emma Talbot Studio

EMMA TALBOT EVERYTHING IS ENERGY

FREE EXHIBITION

18 OCTOBER 2025

8 FEBRUARY 2026

Donations welcome

11am — 6pm, Tuesday — Sunday
16 Narrow Quay, Bristol BS1 4QA

@arnolfiniarts
arnolfini.org.uk

ARNOLFINI

EST. 1961



Supported using public funding by
**ARTS COUNCIL
ENGLAND**

ACBMT
Ashley Clinton Barker-Mills Trust

**UWE
Bristol**
University of the West of England



24 Jan —
3 May 2026

GRAYSON PERRY

Aspects of Myself

Tickets £8*

*TICKETS £6 WHEN BOOKED ONLINE
£4 NUS / MA members, £3 Art Fund,
under 19s / carers free.

Visit: ramm.uk/AspectsOfMyself



ramm

Image: Aspects of Myself, Grayson Perry, 2001. Tate. Purchased from Laurent Delage Gallery with assistance from David and Janice Blackburn, 2002. Courtesy the artist and Victoria Miro. © Grayson Perry. Photo: Tate

**Royal Albert Memorial
Museum & Art Gallery**

Open Tue, 10.30-5pm, Wed-Sun, 10-5pm
Closed Mondays and bank holidays

Queen Street
Exeter EX4 3RX

rammuseum.org.uk
@rammuseum

Exeter
City Council



Supported by
**ARTS COUNCIL
ENGLAND**

Exhibit A

January and February 2026



Pinkie Maclure: The Soil

Stained glass light box, 3 x 2.5 m, 2023

ARTIST STATEMENT: "Due to intensive farming methods, the world could run out of topsoil in 60 years, according to the UN. Without topsoil, the earth's ability to filter water, absorb carbon, and feed people plunges. *The Soil* proposes we turn this situation around, by learning to work with the land rather than against it. This gardener is standing over a compost heap, peeing in it to activate nitrogen and the composting process. A river of pee, painted on greenhouse glass with silver stain, flows to a garden springing into life below her. I salvaged around 65% of the glass for *The Soil* from a neighbour's greenhouse which had collapsed in a storm."

PINKIE MACLURE: 'EARTHLY SPIRITS'

31 January - 4 May: Galleries 1 and 2, East Quay, Harbour Road, WATCHET, TA23 0AQ.
10am - 5pm. 01984 263103 / eastquaywatchet.co.uk.

pinkiemaclure.net

Front cover: GRAYSON PERRY 'ASPECTS OF MYSELF' (2001)

Tate: Purchased from Laurent Delaye Gallery with assistance from David and Janice Blackburn 2002. Courtesy the artist and Victoria Miro. © Grayson Perry. Photo: Tate

Headlines

January and February 2026



Bournemouth Symphony Orchestra

Bournemouth Symphony Orchestra (BSO) is the only full-time professional symphony orchestra in the region and the largest performance organisation to the south and west of London. Their remit covers a wide and diverse area, disparate communities and approximately 10,000 square miles. BSO's home-grown productions tour the southwest, with 77% of performances happening away from their home venue in Poole. These must cater to a range of venue sizes and social demographics, their 'On your doorstep' initiative adapts large scale performances to smaller venues serving rural areas. Outdoor performances are just as important, reclaiming city centres for culture, with the goal of being truly accessible to all. They are the orchestra in residence at Bristol Beacon but need to be as relevant to an audience there as to one in Poole or Cornwall.

Championing professional musicians is at the heart of their practice, they are the largest musical employer in the region. Bringing music into people's lives is their philosophy, wherever they might be on life's journey, and performance is just the tip of the iceberg. BSO's participatory programme is what makes them unique, focussing on education, young people, communities and creative health. These are not just adjuncts but the most important elements of their programme. They consider a performance in the Royal Albert Hall to be just as important as one in a care home or on a hospital ward.

The BSO aim to connect people with music in ways that are important to them.

Their engagement work deepens their performance work, with additional insight and interest in the communities they serve. As well as performance musicians they have a team of specialists, known as Associate Musicians, that live across the region and represent the orchestra. Trained in-house, they are community music leaders, facilitators and creative practitioners. They are trauma informed and equipped to work in care homes, with patients with dementia, or even in End-of-Life settings. It's a combination of both that make BSO the success that it is, with as much care, thought and creativity going into a performance at the BBC Proms as into a Tea and Dementia session in a village hall in rural Somerset.

Their outreach work is done in partnership with local health and social care providers. Building relationships and trust can be up to a year in the making before the organisations are ready to work together in bespoke and dedicated ways. Their seven Community and Wellbeing Orchestras are based in Bodmin, Boscombe, Bristol, Exeter, Chard, Southampton, and Wincanton.



The Bristol Recovery Orchestra is a standout example, working with Bristol Drugs Project's Creative Communities. This is a space for anyone affected by addiction to make music. Meeting weekly, they create new music and play anything from classical pieces to Radiohead. Boscombe's Old School House is another, a weekly drop-in for those experiencing mental health challenges, homelessness, isolation or addiction and creating a musical community. Crucially what all create is a space for people to play music in a safe and supportive environment with people who have similar shared experiences.

Education is an enormous part of BSO's provision. Schools' concerts are often a primary school child's first experience of symphonic music. They give young musicians' insight into professional programmes and support their development. They also champion disabled musicians with 'BSO Resound', the world's first disabled-led ensemble as part of a professional orchestra. This has gained them high profile international attention for their ground-breaking performances and advocacy for equality.

The bottom line is that BSO are listening to their communities and programming in response to need. They are creating a web of musical activity across the southwest but what makes the organisation exceptional is that everything they do is the very best version of themselves.

Suzy Rushbrook

Headlines

Crafts Council Collection: 2016, 18. Acquired with Art Fund support (with a contribution from The Wolfson Foundation) and a donation from Maylis and James Grand. Courtesy the artist, Paragon | Contemporary Editions Ltd and Victoria Miro. © Grayson Perry



'A PERFECT MATCH' (2015)

Grayson Perry: Aspects of Myself

Grayson Perry is one of Britain's best-known contemporary artists. As an astute observer and chronicler of life in Britain, Perry tackles subjects that are universally human: identity, gender, social status, sexuality, religion and politics. He uses his own experiences to reflect wider narratives about our place in society.

Perry says: "I investigate our slippery sense of who we feel we are... the ongoing process of 'being ourselves'."

From textiles and pots to etchings and woodcuts, *Aspects of Myself* at Exeter's Royal Albert Memorial Museum & Art

Gallery (RAMM) will explore a sense of self through a range of media and storytelling techniques.

Works such as *A Map of Days* explore how the interests, habits and psychological traits that make up a sense of 'self' can be mapped onto towns, reflecting an emotional geography of contemporary society.

Other works such as the ceramics *Aspects of Myself* and *Mad Kid's Bedroom Wall* show how Perry incorporates autobiographical elements that reflect his own childhood experiences.

The exhibition will also feature elements from Perry's *A House for Essex*, a secular chapel dedicated to the fictional Essex woman Julie Cope.

Rarely are all four large tapestries shown together, so this is a unique opportunity to see them without visiting the house. Through these works and tile moulds from the house's construction, Perry tells the story of place and belonging.

24 January - 3 May: RAMM, Queen Street, EXETER, EX4 3RX. Tuesday 10.30am - 5pm, Wednesday - Sunday 10am - 5pm. rammuseum.org.uk.



SUBVERSIVE FORMS

revolutionary approaches to clay

15 November - 21 February



Free entry
Mon - Sat, 10am - 4pm

Sou'-Sou'-West

Unit 4&6 Manor Yard
Symondsburys Estate
Bridport DT6 6HG

11-31 Jan Sale of Work

16-25 Jan Beaminster School

24-31 Jan Artist Postcards

A5 artwork submissions welcome

5 Feb-2 Mar Spring Tide/Open

Support Us — Become a Friend of Sou'-Sou'-West

Your membership helps sustain us, while you enjoy member benefits, discounts, and a guaranteed place in our annual Friends Exhibition.

POP-UPS

February offers four one week only pop-up shows. A great opportunity for your CV and chance to develop your artistic practice.

See Website for details

**Free parking • Cafe Walking
• Shopping • Dog Friendly**

Daily: 10:30 - 15:30

Tel: 01308 301 326

@ sousouwestgallery

sousouwest.co.uk



Exhibit A

Artists and photographers are invited to submit work for next issue's page 3 Exhibit A by emailing images to: simon@evolver.org.uk

HERITAGE
COURTYARD
GALLERY AND
STUDIOS

CREATIVE WORKSHOPS

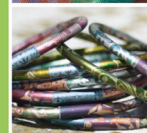
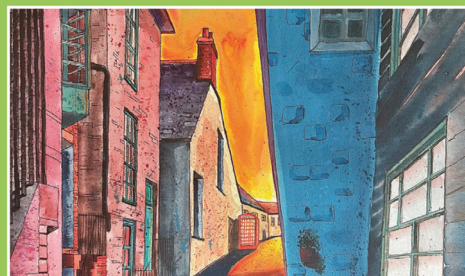


scan the code to
discover our current
workshops, classes
and art activities

www.heritagecourtyardstudio.com
6 heritage Courtyard
Sadler Street Wells BA5 2RR

Walford Mill Crafts

The creative home for
designer makers in Dorset



Come and visit Walford Mill Crafts and you'll find inspiring exhibitions, pop-ups for up and coming makers along with our creative on-site makers in their open studios.

Book the kids on a children's art class or treat yourself to a creative workshop. We also hold Courtyard Craft Markets every second Saturday in the month starting from March.

Don't forget to enjoy a delicious lunch at the Little Pickle Cafe while you visit.

www.walfordmillcrafts.co.uk

Knobcrook Road, Wimborne BH21 1NL - Registered Charity No. 1049540

Affordable studio spaces available, contact: admin@walfordmillcrafts.co.uk



Athelhampton
HOUSE & GARDENS



Gordon Rushmer at Athelhampton EVERY PICTURE TELLS A STORY

An exhibition of paintings and watercolours in the East-Wing Gallery at Athelhampton House.

Gordon has works in major government collections and museums both in Britain and abroad. Along with being a renowned landscape painter he worked as a war artist alongside British and Dutch Royal Marines and Special Forces.

**September 10th 2025
to March 7th 2026**



**One of England's
finest Tudor Manor Houses,
surrounded by award-winning gardens**



Easily found, just off the A35 Puddletown bypass, five miles east of Dorchester.
Athelhampton House, Dorchester, Dorset DT2 7LG www.athelhampton.co.uk

Headlines



How To Catch A Book Witch

Kira loves reading and visiting the library to find a new book is her favourite thing, until one day the words in the books start disappearing and the adults start to get grumpy.

Graham Grey says the library will be knocked down to make way for a car park!

With her new friend, the book worm, Kira has to uncover why words are vanishing, and where these book monsters have come from - could there be a Book Witch in the library?

This enchanting new show celebrates libraries, storytelling, and imagination, featuring live music and captivating puppetry.

Created with accessibility in mind, it also includes key word signing and integrated captions.

18 February: Village Hall, CHILD OKEFORD, DT11 8EX. 11am. £8 / £6. 01258 861621 / artsreach.co.uk.

19 February: Community Hall, LITTON CHENEY, DT2 9AU. 10.30am. £8 / £6. 01308 482514 / artsreach.co.uk.



'ARE YOU A LIVING THING THAT IS DYING OR A DYING THING THAT IS LIVING' (Installation, 2025)

Emma Talbot: Everything is Energy

'What is life?' is just one of many gently probing questions addressed by British artist Emma Talbot in her solo exhibition *Everything is Energy*, in which the artist leads us through a rich eco-system of works - including silk painting installations, intimate drawings, sculptural forms and animation - each exploring the complexity of our relationship with nature, technology and the world around us.

Everything is Energy invites us to slow down, question and reconnect, asking us 'What can you gather before you retreat?'

Until 8 February

Arnolfini, 16 Narrow Quay, BRISTOL, BS1 4QA. Tuesday - Sunday 11am - 6pm. Free entry (£5 suggested donation). 0117 917 2300 / arnolfini.org.uk.

Diary Dates



BUTLER, BLAKE & GRANT

SPIERS & BODEN

5 March

lighthousepoole.co.uk

'MURDER AT MIDNIGHT'

9 - 14 March

wiltshirecreative.co.uk

GEIRTHRUDUR GUDMUNDSDOTTIR AND ANTOINE PRÉAT

13 and 14 March

concertsinthewest.org

'THE TALENTED MR RIPLEY'

16 - 21 March

lighthousepoole.co.uk

YEOVIL ART WEEKENDER

27 - 29 March

yeovilartspace.uk

BUTLER, BLAKE & GRANT

25 April

wiltshiremusic.org.uk

DORSET ART WEEKS 2026

23 May - 7 June

dorsetvisualarts.org

PURBECK ART WEEKS 2026

23 May - 7 June

purbeckartweeksfestival.co.uk

SOMERSET ART WEEKS 2026

19 September - 4 October

somersetartworks.org.uk

The Pound
January - February Exhibitions

John L. Harris: Where Drawing Takes Me
12 December - 17 January

Nicola Davis: Art Heals
23 January - 21 February

Betty Sargent: Fragments of Joy
27 February - 28 March



Visual Arts

January and February 2026



BINNY MATHEWS 'ORANGE RHYTHM' (Oil on canvas, 61 x 91cm, 2025)

Journey: Two Artists, One Studio

"Four years ago, two acclaimed artists embarked on a project which would change the way each of them worked. Successful portrait painter Binny Mathews had the idea of painting another artist at work, observing their most private creative moments and recreating the atmosphere of absolute concentration within the studio. She approached her friend the sculptor Clare Trenchard who agreed for one month on condition there would be no talking and no lunching (they are both tremendous talkers and lunchers.) The arrangement continued for four transformational years. Sculptor Clare Trenchard - whose spirited sculpture in bronze captures the essence of animals and wild hare-humans - gradually began to explore making human figures in ceramic inspired by Moroccan travellers and nomadic people in harsh landscapes. The electrifying *Representatives* are taller than life-size with flapping robes, headdresses and undefined faraway faces. In maquette they are also a delight whether gathering in groups or single. Clare's drawings revel in the distinctive humorous, decorative qualities of travellers on donkey, old women gossiping in the marketplace, figures in the dust and wind. While other drawings define the thrilling figures she has developed as sculpture."

17 January - 7 March: Sladers Yard Gallery, West Bay Road, WEST BAY, Bridport, DT6 4EL. Wednesday - Saturday 10am - 4pm. 01308 459511 / sladersyard.co.uk.

HOPE BOURNE: 'A LIFE OUTSIDE' Until 10 January

Somerset Rural Life Museum, Chilkwell Street, GLASTONBURY, BA6 8DB. Tuesday - Saturday 10am - 5pm. £10 / £8 / £4.75. 01458 831197 / srlm.org.uk. See page 7.

'RADIANCE' Until 10 January

Sladers Yard, WEST BAY, Bridport, DT6 4EL. Wednesday - Saturday 10am - 4.30pm. 01308 459511 / sladersyard.co.uk. "Paintings and prints by Louise Balaam Martyn Brewster, Vanessa Gardiner, Howard Phipps, and Alfred Stockham, furniture and works in wood by Petter Southall, and ceramics by Lise Herud Braten, Emily Myers, Derek Matthews, Barbara Gittings, Björk Haraldsdóttir, Gabriele Koch, Yo Thom, Sue Ure and more..."

JO LATHWOOD: 'DOWN THE HATCH' Until 11 January

Galleries 1 and 2, East Quay, Harbour Road, WATCHET, TA23 0AQ. 10am - 5pm. 01984 263103 / eastquaywatchet.co.uk.

JOHN L. HARRIS: 'WHERE DRAWING TAKES ME' Until 17 January

The Pound Arts Centre, Pound Pill, CORSHAM, SN13 9HX. Monday - Friday 9am - 9.30pm, Saturday 9am - 4pm. 01249 701628 / poundarts.org.uk.

'UN/COMMON PEOPLE: FOLK CULTURE IN WESSEX' Until 18 January

Poole Museum, 4 High Street, POOLE, BH15 1BW. 10am - 5pm. poolemuseum.org.uk. "This major touring exhibition celebrates the rich traditions, seasonal customs, and everyday creativity of Wessex, past and present. Expect over 100 fascinating objects, immersive films, and a beautifully illustrated folk song and story map - all capturing the spirit of Wessex through the seasons."



Clare Trenchard 'The Representatives' ceramic on metal armature H175cm

RADIANCE paintings, prints, ceramics
continues until Saturday 10 January.

JOURNEY

Clare Trenchard

new ceramic sculpture and works on paper

Binny Mathews

new paintings of the sculptor's studio

17 January - 7 March 2026

Petter Southall furniture

SLADERS YARD

Contemporary Art Gallery West Bay DT6 4EL CAFÉ SLADERS
@sladersyard 01308 459511 Open Weds - Sat 10am - 4pm
View all works: sladersyard.co.uk



Binny Mathews 'Clare Sculpting' oil on canvas board 60 x 50cm 2023

Visual Arts

'DOWNLAND'

Until 24 January

Wiltshire Museum, 41 Long Street,
DEVIZES, SN10 1NS. Monday and
Tuesday 10am - 5pm, Thursday -
Saturday 10am - 5pm. 01380
727369 / wiltshiremuseum.org.uk.



'LANDSCAPE OPEN 2025'

Until 25 January

Salisbury Museum, The Kings House,
65 The Close, SALISBURY, SP1 2EN.
10am - 5pm. £12 / £10.90 / £6 /
£5.40. 01722 332151 /
salisburymuseum.org.uk.

*"Landscapes in a multitude of styles
and media, reflecting the
multifaceted relationships artists
have to place, and the range of
talented artists working within the
established genre."*

Above: Caroline Mackintosh 'Dune,
Holkham'

'SOUND OF THE SEA'

Until 26 January

Poole Museum, 4 High Street,
POOLE, BH15 1BW. 10am - 5pm.
poolemuseum.org.uk. *"Grab your
curiosity, bring your best moves, and
get ready to meet the sea like you've
never seen it before!"*

EMMA TALBOT: 'EVERYTHING IS ENERGY'

Until 8 February

Arnolfini, 16 Narrow Quay, BRISTOL,
BS1 4QA. Tuesday - Sunday 11am -
6pm. Free entry (£5 suggested
donation). 0117 917 2300 /
arnolfini.org.uk. *"British artist Emma
Talbot leads us through a rich eco-
system of works - including silk
painting installations, intimate
drawings, sculptural forms and
animation - each exploring the
complexity of our relationship with
nature, technology and the world
around us."*



SOPHIE PEARSON 'CHEAP STREET, FROME'

Frome Printmakers: Impression

"The Frome Printmakers workshop runs as an artist co-operative and has been a local resource for open access printmaking since 1997. This exciting exhibition aims to highlight the breadth of both style and techniques in printmaking, highlighting the work of ten artists: Sarah Du Feu, Martin Martin, Sue Cook, Sophie Pearson, Stephen Forster, Steve Clarkson, Charlotte Moore, Elizabeth Irving, Jen Chow, Liza Saunders, and Steve Clarkson, who chairs the group."

10 January - 15 February: The Long Gallery, Black Swan Arts, 2 Bridge Street, FROME, BA11 1BB. Monday - Sunday 10am - 4pm. 01373 473980

blackswanarts.org.uk


**Fri 27-Sun 29
March 2026**

**visual arts,
poetry, music,
creative activities
& events across
Yeovil Town
Centre**

**YEOVIL
ART SPACE**

Supported using public funding by
**ARTS COUNCIL
ENGLAND**

info@yeovilartspace.uk
www.yeovilartspace.uk/artweekender





Boilerhouse Gallery

Contemporary Art and Craft in the heart of Purbeck

Saturdays January to March 11am - 4pm
Open throughout February half-term

Sandy Hill Lane, Corfe Castle BH20 5JF
07398 052489 • boilerhousegallery.co.uk




Come and join our friendly Art Community in Sherborne

- EXPERIENCED TUTORS
- INSPIRING STUDIOS, WELCOMING ENVIRONMENT
- VARIED WORKSHOPS / PART-TIME COURSES FROM HALF DAY TO 34 WEEKS
- ALL ABILITIES WELCOME
- CITY & GUILDS LEVEL 2 QUALIFICATIONS IN ART & DESIGN, TEXTILES, INTERIOR DESIGN
- DROP-IN SESSIONS



For more information, please give us a call, pop in and see us, email or visit our website.

07549 357138 / 07917 190309
southwestartcourses.co.uk

Email admin@ southwestartcourses.co.uk

Compton Studios, Compton Court
Coldharbour, Sherborne, DT9 4AG



HEART OF THE TRIBE GLASTONBURY

CALL FOR SUBMISSIONS



WE'RE ON THE LOOKOUT FOR NEW ART!

Our Open Call invites submissions for our 2026 exhibition programme. We welcome emerging and established artists across all mediums. Visit our website for more information and how to enter.




INTRODUCING CHRISTOPHSKI SOLO SHOW

A solo exhibition by **Christopher Parkin**, unveiling his latest body of work. Bold, witty and unmistakably original, this exhibition celebrates Christophski's playful visual language.



Please scan the QR code to visit our website and learn more about our gallery, events & exhibitions.

74 High Street
Glastonbury
BA6 9DZ
heartofthetribe.com
01458 780046

Explore our latest art exhibition, experience our award-winning garden and enjoy complimentary hot drinks.

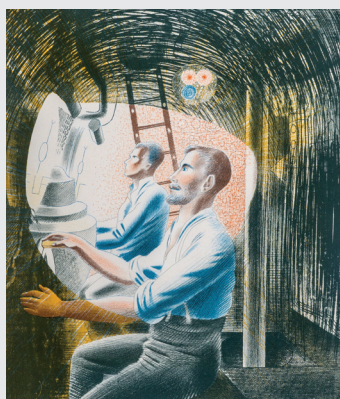
Visual Arts



'THE CINEMATIC LANDSCAPES' Until 28 February

Bridport Contemporary, 11 Downes Street, BRIDPORT, DT6 3JR. Saturdays 10am - 3pm. 07983 465789 / kitglaisyer.com. "Kit Glaisyer's series of paintings of the views across the Bride Valley re-imagine the Romantic Sublime with a contemporary twist."

Above: 'Misty Bride Valley' (Oil on canvas, 90 x 60cm)



'ARTIST AS WITNESS: THE IMPACT OF WAR' Until 8 March

Russell-Cotes Art Gallery & Museum, BOURNEMOUTH, BH1 3AA. 10am - 5pm. £9.50 / £5. russellcotes.com. "Exhibition highlighting artists as eyewitnesses, revealing war's impact through works from both World Wars, and George Butler's recent depictions of the Ukraine conflict."

Above: Eric Ravilious 'Diving Controls 2'

'WILDLIFE PHOTOGRAPHER OF THE YEAR 2025' Until 26 April

Bristol Museum & Art Gallery, Queens Road, BRISTOL, BS8 1RL. 10am - 5pm. bristolmuseums.org.uk.



'OCHRE STILL LIFE' (1958, purchased by Tate 1962) © The estate of William Scott

William Scott: Beauty in Plainness

"William Scott (1913 - 1989) was a pioneering abstract painter, best known for his distinctive still life and landscape compositions. After settling in Somerset in the 1940s, he taught at the Bath Academy of Art for ten years and became a key figure in the post-war British art scene. In the 1950s, Scott developed a close friendship with American artist Mark Rothko, who visited and stayed with him in Somerset in 1959. This exhibition features three large-scale works from this pivotal period in Scott's career, on loan from Tate. An animated film further explores the artist's vision and life in the county."

Until 7 February: The Museum of Somerset, Taunton Castle, Castle Green, TAUNTON, TA1 4AA. Tuesday - Saturday 10am - 5pm. 01823 255088 / museumofsomerset.org.uk.

BULL MILL STUDIO WINTER OPEN 3 January - 7 February

Bull Mill Studio, Bull Lane, CROCKERTON, Warminster, BA12 8AY. Saturdays 10am - 4pm. 07730 400784 / nickandrew.co.uk / tanyahinton.co.uk. "Open studio exhibition."

'OPEN 2025 PRIZE WINNERS' 6 January - 6 February

Ilminster Arts Centre, The Meeting House, East Street, ILMINSTER, TA19 0AN. Tuesday - Saturday 9.30am - 3pm. ilminsterartscentre.com. "Work by the winners of the 2025 Open exhibition."


MICHAEL RESTRICK: 'PLAY THE HAND YOU'RE DEALT' 6 January - 2 March

Mowlem Theatre, Shore Road, SWANAGE, BH19 1DD. Monday - Saturday 10am - 9.30pm. 01929 422239 / themowlem.com. "Paintings and found objects."

OPEN26 CALL FOR ENTRIES

In its 40th anniversary year, Black Swan Arts is delighted to announce the launch of the highly regarded Art Open Competition 2026. This highlight of our celebratory 40th year will fill the prestigious Long Gallery in the summer.

The competition will open for entries—local, regional, and national, across all genres and media—on 1st February, 2026.

 **BlackSwanArts**
OPEN 26

MON - SUN | 10AM-4PM
2 BRIDGE STREET, FROME BA11 1BB
[BLACKSWANARTS.ORG.UK](https://www.blackswanarts.org.uk)

Visual Arts



ROBERT-DUCKWORTH-GREENHAM 'ON THE BEACH'

People Watching

"In 2026, Dorset Museum & Art Gallery will stage an extensive exhibition combining one of the UK's leading collections of modern British art - The Ingram Collection - with its own, resulting in an exploration of the concept of image and portraiture. *People Watching* will feature around 50 works of sculpture, paintings, drawings and photography, including works that have never been displayed publicly before, spanning a century and more, from 1915 up to today. The exhibition seeks to discover what portraits can tell us about the artist and sitter, whether by simply showing what a person looks like, or by capturing an idea or emotion or through representation. With work from over 40 individual artists, including some of the most acclaimed names in modern British art such as Elisabeth Frink, Bridget Riley, Stanley Spencer and Henry Moore, as well as lesser-known artists ready to be re-discovered, the exhibition promises to be an extensive and thorough investigation of British portraiture that will leave visitors more informed about the past and more excited about the future."

31 January - 10 May: Dorset Museum & Art Gallery, High West Street, DORCHESTER, DT1 1XA. 10am - 5pm.

dorsetmuseum.org

'A SPLASH OF COLOUR'

7 - 25 January

Walford Mill Crafts, Stone Lane, WIMBORNE, BH21 1NL. Wednesday - Saturday 10am - 5pm. Sunday 11am - 4pm. 01202 841400 / walfordmillcrafts.co.uk. "Kicking off Walford Mill's 40th anniversary year, vibrant artwork from Witchampton and St John's First Schools."



'GELID'

10 January - 7 February

Andelli Art, Mendip House, Upper Breach, SOUTH HERRINGTON, Wells, BA5 3QG. Saturdays 10am - pm. andelliart.com. "Mixed-artist exhibition for the winter season showcasing works from the Andelli personal collection alongside the gallery's stable of artists and makers." Above: Morag Ballard / Allan Milner 'Gazette'

'SALE OF WORK'

11 - 31 January

Sou'-Sou'-West Gallery, Manor Yard, Symondsbury Estate, SYMONDSBURY, Bridport, DT6 6HG. 10.30am - 3.30pm. 01308 301326 / souseswest.co.uk. "Snap up a bargain as the gallery is cleared to make way for new work."

'WELCOME 26'

14 - 30 January

The Gallery, Shaftesbury Arts Centre, Bell Street, SHAFTESBURY, SP7 8AR. Monday - Saturday 10am - 4pm. shaftesburyartscentre.org.uk. "Work by the artists showing at Shaftesbury Arts Centre Gallery in 2026."

'DON'T TELL ANYONE'

16 - 18 January

Hours, 10 Colston Yard, BRISTOL, BS1 5BD. Friday 6 - 9pm, Saturday and Sunday 11am - 5pm.. 07766 054659 / hours-space.com.



Marina Morris

ART and BEYOND
FRAME - PRINT - GALLERY

Wide range of frames and expert, friendly advice

Giclée prints from original art or photographs

Original art from local and national artists

1 Lynden Way, Beaminster, DT8 3AX

Tel: 01308 800693

Unit 3, 20 Market Street, Crewkerne, TA18 7LA

Tel: 01460 497589


email info@artandbeyond.co.uk




Sarah du Feu



Ceramics by Richard Longden, Stephanie Carlton, Tone von Krogh, Babs Kirby



Thelma
Hulbert
Gallery



SHIFTING WATERSCAPES

Ellen Wiles and
Arun Sood

17 JANUARY -
28 FEBRUARY

Tuesday - Saturday, 10am - 5pm
Elmfield House, Dowell Street, Honiton, EX14 1LX
01404 45006
Instagram Facebook Twitter thelmahulbert.com

©Arun Sood

THE LONG GALLERY



IMPRESSION

FROM PRINTMAKERS

PREVIEW NIGHT
09 JANUARY

EXHIBITION DATES
10 JANUARY - 15 FEBRUARY

MON - SUN | 10AM-4PM
2 BRIDGE STREET, FROME BA11 1BB
BLACKSWANARTS.ORG.UK

 **BlackSwanArts**
40th Anniversary

DorchesterArts
01305 266926 | dorchesterarts.org.uk
The Corn Exchange Gallery, High East Street, Dorchester


Marc Yeats

Interfaces: Sea, Sky, and Land

Tuesday 10 February Open 10am - 4pm
- Saturday 21 March Tuesdays - Saturdays



the
CORN
EXCHANGE
GALLERY



Jeremy Diggle: Out of Time


An exhibition of Diggle's exuberant abstract paintings


Allsop Gallery, Bridport Arts Centre
17 Jan - 28 Feb, 10am-4pm, Wed-Sat

BRIDPORT
ARTSCENTRE
bridport-arts.com

ARTS COUNCIL
ENGLAND

Supported using public funding by
ARTS COUNCIL
ENGLAND

 Dorset
Council

 BRIDPORT
TOWN COUNCIL

Tincleton Gallery

contemporary music & fine art in Dorset

Spring 2026

gallery & guest artists

Sat 13 Feb – Sun 12 July 2026



*"Rocky Inlet Off East Scotland
oil on linen, by Kim Pragnell*

The Old School House, Tincleton, near Dorchester, DT2 8QR
Saturday and Sunday or by appointment • 10am - 4pm
01305 848909 • tinctongallery.com

BULL MILL STUDIO

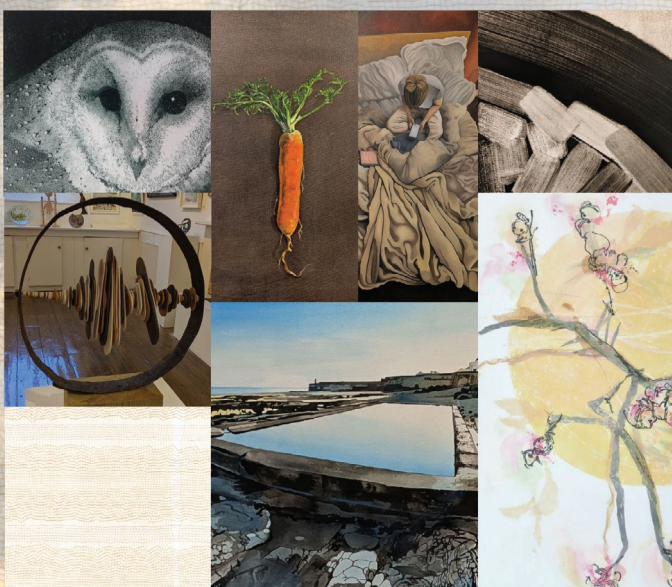


WINTER OPEN + drawing projects SALE

Saturdays 3 /10 /17 /24 /31 Jan /7 Feb

Bull Mill Studio, Crockerton, Warminster BA12 8AY
07730 400784 07713 277083
www.nickandrew.co.uk www.tanyahinton.co.uk

PRIZE WINNERS-OPEN 2025



TUESDAY 6TH JANUARY- FRIDAY 6TH FEBRUARY

OPEN TUESDAY - SATURDAY 09:30-15:00

A selection of work from the winners of the 2024 Open Exhibition.
The exhibition will feature work from the following artists:

Overall Winner: Susan Lawrence

Runners Up: Sally Hebeler & Victoria Garland

Emerging Artist Award: Rebecca Mitchell

Highly Commended Artists: Lawrence Nash,
John Gammans & Sue Smallwood

Visitor's Choice Award: Leo Davey



FROME OPEN ART TRAIL

2026

4 -12 July

Call
for
Artists

1 Jan - 1 March

www.frome-open-art-trail.co.uk



Visual Arts

BEAMINSTER SCHOOL

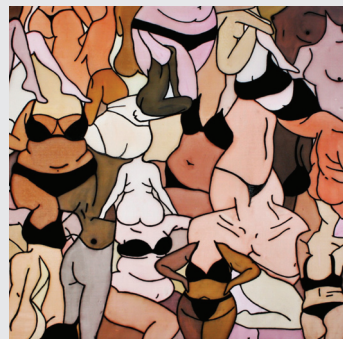
16 - 25 January

Sou'-Sou'-West Gallery, Manor Yard,
Symondsbury Estate,
SYMONDSBURY, Bridport, DT6 6HG.
10.30am - 3.30pm. 01308 301326.

'FOREST FLOOR TO SKY ARTS'

19 - 24 January

Taunton Library Gallery, Paul Street,
TAUNTON, TA1 3X. Monday and
Tuesday 9.30am - 5.30pm,
Wednesday 9.30am - 7pm, Thursday
and Friday 9.30am-5.30pm, Saturday
9.30am - 5pm. katiesimsart.co.uk.



NICOLA DAVIS: 'ART HEALS'

23 January - 21 February

Pound Arts, Pound Pill, CORSHAM,
SN13 9HX. Monday - Saturday
9.30am - 9.30pm. poundarts.org.uk.

*"Using art to express emotion,
explore mental illness and promote
body positivity, Nicola bares all with
brutally honest depictions of her
mindset and recovery."*

'ARTIST POSTCARDS'

24 - 31 January

Sou'-Sou'-West Gallery, Manor Yard,
Symondsbury Estate,
SYMONDSBURY, Bridport, DT6 6HG.
10.30am - 3.30pm. 01308 301326.

'STILL LIVES'

24 January - 28 February

ACE Arts, Market Place, SOMERTON,
TA11 7NB. Tuesday 11am - 5pm,
Wednesday - Saturday 10am - 5pm.
acearts.co.uk. *"Embroidered works
that transform everyday domestic
moments into quiet, contemplative
reflections. Through thread, ordinary
gestures and familiar scenes are
paused, magnified, and made
meaningful."*



Ellen Wiles and Arun Sood: Shifting Waterscapes

"Exhibition exploring the value of water in our landscapes, including immersive works involving sound, story, moving image, visual art, and mixed media."

17 January - 28 February: Thelma Hulbert Gallery, Dowell Street, HONITON, EX14 1LX. Tuesday - Saturday, 10am - 5pm. 01404 45006 / thelmahulbert.com.

ZANDRA RHODES: 'A LIFE IN PRINT'

24 January - 10 May

The Holburne, Great Pulteney Street,
BATH, BA2 4DB. Monday - Saturday
10am - 5pm, Sunday and Bank
Holiday 11am - 5pm. 01225 388569 /
holburne.org. *"Exhibition
showcasing a spectacular array of
Dame Zandra Rhodes' vibrant
screen-printed garments from the
1960s, 70s and 80s."*

ANNA KLESSE: 'TEXTURAL WAVES'

28 January - 15 February

Walford Mill Crafts, Stone Lane,
WIMBORNE, BH21 1NL. Wednesday
- Saturday 10am - 5pm. Sunday
11am - 4pm. 01202 841400 /
walfordmillcrafts.co.uk. *"Anna's first
solo exhibition features a body of
work capturing fluid motion through
three-dimensional textural
structures."*

DON MCCULLIN: 'BROKEN BEAUTY'

30 January - 4 May

The Holburne, Great Pulteney Street,
BATH, BA2 4DB. Monday - Saturday
10am - 5pm, Sunday and Bank
Holiday 11am - 5pm. holburne.org.
*"Exhibition of work by one of the
most celebrated photographers and
photojournalists of our time,
featuring iconic images from his
seven-decade career."*



Nina Gronow-Lewis

Still Lives

An Exhibition of
Embroidered Intimacies

24 January – 28 February



Market Place, Somerton, Somerset TA11 7NB • acearts.co.uk
Tues 11am - 5pm, Weds - Sat 10am - 5pm • 01458 273008

How to Evolve

Ros Huxley celebrates 25 years of Evolver Magazine



Evolver Magazine is as old as this century. In an age when print media are falling by the wayside and the arts world struggles to afford effective marketing budgets, Evolver celebrates twenty five years of existence. Every month around 400 shops, venues, cafes and galleries give away 10,000 copies of a magazine which costs nothing, includes everything, looks wonderful, and smells delicious!

This precious publication is the baby of musician and designer Simon Barber, with support from Suzy Rushbrook and Sheila Driver. Forty pages of stunning images and accurate listings, alongside interesting artist features by Fiona Robinson.

Turns out I helped give birth to Evolver when I was Ros Fry, coordinator of the long defunct DAPF (Dorset Arts Promoters Forum).

Recalls Simon: "I was working as a children's book publisher and involved with Sherborne Contemporary Arts. We produced six editions of a members' magazine called SCAM and I realised it was something I enjoyed producing and would like to do more of, if only I could work out how to make a larger version feasible. I went to the conference you organised at Weymouth Pavilion where film students were interviewing participants about their vision for the arts

in Dorset. I had no business plan but suddenly, at the end of the day, there I was on a big screen talking about my dream of a culture magazine."

Chris Huxley, then director of Bridport Arts Centre, got on board immediately promising paid advertising to support a regular magazine, closely followed by Christine Fletcher-Jones from Walford Mill Crafts, Isabel de Pelet from Guggleton Farm Arts and Sharon Haydon of Dorchester Arts Centre."

Over the past quarter century, those founding advertisers have been joined by more than thirty other key cultural individuals and organisations who see the value of a print magazine which sits on breakfast tables for weeks at a time and cannot be swiped or deleted. From East



PJ HARVEY by MARIA MOCHNACZ
January / February 2001
1

Quay in Watchet to Lighthouse in Poole with every renowned arts producer in between, the Wessex region is covered by Evolver Magazine. Some arts venues struggle to produce and distribute printed publicity but they don't need to panic since Evolver does it for them.

It's not been a smooth journey for Simon. There have been challenges from other magazines, and the distribution model has had to keep changing to keep up with the magazine's growth, but now his daughter Hollie and partner Josh manage the massive bi-monthly delivery. During Covid Simon recalls publishing the March / April issue, invoicing the advertisers and then having no way of knowing if cultural organisations would even be putting on events afterwards, let alone advertising them. He worried that this would be the moment that everything went online but although four issues didn't happen, fortunately, all the advertisers stayed with Evolver and the magazine survived.

One reason for Evolver's popularity is, of course, its eye-catching covers. From the very first issue which featured photographer Maria Mochnacz's portrait of PJ Harvey, the clear, simple designs are instantly recognisable. Says Simon: "My favourite moment with every issue is when I know what the cover image is going to be. I used to design record sleeves and I learned how to make interesting, exciting and attractive images which people want to pick up and own. Evolver's covers follow the same principle. They stand out across a room but they're also covetable. Some people store them for years!"

Simon trained in publicity design as part of a Graphic Design degree course at Newport College of Art. Except for a few years as a mental health nurse and a short stint at Dorchester Arts Centre, he has always been freelance - as designer and musician.

"I feel lucky never to have had a proper job," he laughs. From the mid-eighties Simon has performed with cult indie band, The Chesterfields, evolving into an additional musical iteration as Simon Chesterfield. "I love the music but it's

Evolver Magazine 2001 - 2026

almost impossible to earn a living as a musician. I'm proud to say I've never had an overdraft with Evolver."

Advertising costs are kept low because Evolver's key supporters block book for six issues ensuring a constant income. Simon has never received any kind of grant but appreciates how many of his advertisers are supported by the Arts Council of England, local authorities and commercial sponsors. He comments: "Evolver has created a vital network without the people even realising it. If you're listed in Evolver you're in a gang. If you advertise in Evolver you're building that network of makers, performers and venues. It's a network other regions in the UK don't have."

Whenever I'm enthusing about a concert, exhibition or live performance I've just seen (humble brag here, about two a week), I hear someone saying "Oh, I wish I'd known about that, I would have gone." Most of the south west isn't sufficiently populated to support live events that run for more than one or two performances and word of mouth, even online, is not powerful enough to build crowds. Local news providers, whether print, online or broadcast, are pressurised to cover all subjects so it's a question of luck not design to experience a comprehensive round-up of available culture at any one time.

Surveying the past quarter century Simon observes: "When we started the magazine the arts environment was completely different. There were a lot of county arts officers and formal networks like DAPF. They've disappeared but most of the venues and activities they helped support still exist, with new personnel and fresh ideas. We're in a healthy place."

I subscribe to a lot of newsletters and mailing lists, but if you don't have time to scroll through everything, or you dislike booking ahead, then Evolver magazine highlights all the good stuff for you in one go. Put red rings around the ads, or yellow stickies on the listings you like, and plan some stimulating adventures.

Evolve yourself, and help Evolver notch up another quarter century!

Ros Huxley

Ros Huxley is author of 'Kendal Acts Up', published this summer by WriteSideLeft

Portrait photograph by Deborah Johnson

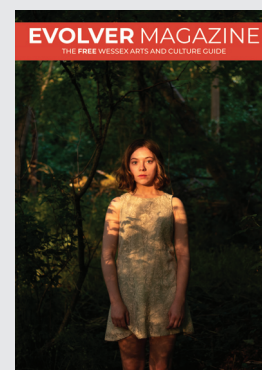
Simon Barber selects his six favourite front covers



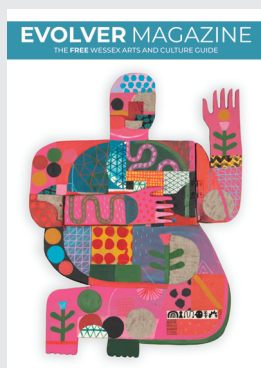
PAUL BLOW
November / December 2009
54



DAVID R ABRAM
March / April 2022
124



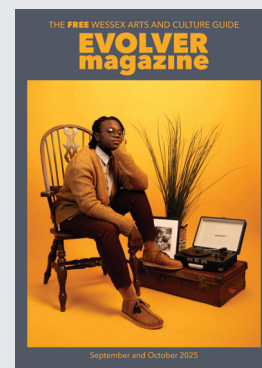
ROBERT DARCH
March / April 2023
130



DAVID SHILLINGLAW
May / June 2023
131



TOBY HOLMES
July / August 2023
132



ADANNAY
September / October 2025
145

Suzu Rushbrook selects her six favourite front covers



UNA WOODRUFF
July / August 2008
46



MARK BRUCE COMPANY
January / February 2018
103



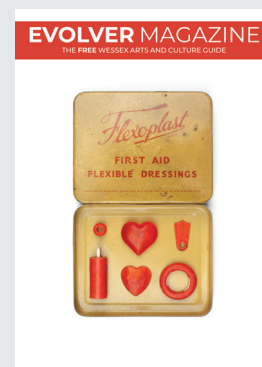
ORIANE LE CHEMINANT
July / August 2018
106



RACHEL ROSS
March / April 2019
110



EMILY QUINCE
September / October 2021
121



ZOE BARKER
July / August 2024
138

 See **evolvermagazine** for all 147 front covers

Visual Arts

PINKIE MACLURE: 'EARTHLY SPIRITS'

31 January - 4 May

East Quay, Harbour Road, WATCHET, TA23 0AQ. 10am - 5pm. eastquaywatchet.co.uk. "Earthly Spirits is a new solo exhibition by Scottish stained glass artist and musician Pinkie Maclure. The exhibition explores themes of environmentalism and marks Maclure's first solo show in England." See Exhibit A, page 3.

'TWO ARTISTS'

2 February - 1 March

The Duchess of Cornwall, POUNDBURY, DT1 3DD. 9am - 11pm. 07565 633004.

'THE SPRING OPEN'

4 - 21 February

The Gallery, Shaftesbury Arts Centre, Bell Street, SHAFTESBURY, SP7 8AR. Monday - Saturday 10am - 4pm. shaftesburyartscentre.org.uk.

HANNAH LANE

4 - 28 February

Artwave West, MORCOMBELAKE, DT6 6DY. Wednesday - Saturday 10am - 5pm. artwavewest.com. "Hannah Lane's hand-carved wood and reconstituted paper works reveal shared origins and internal textures, while transforming ephemeral materials into contemplative, tactile sculptural forms."

'SPRING OPEN'

5 February - 2 March

Sou'-Sou'-West Gallery, Manor Yard, Symondsbur Estate, SYMONDSBURY, Bridport, DT6 6HG. 10.30am - 3.30pm. 01308 301326.

'LIFE LINES'

6 - 8 February

Hours, 10 Colston Yard, BRISTOL, BS1 5BD. Friday 6 - 9pm, Saturday and Sunday 11am - 5pm. 07766 054659 / hours-space.com.

'THE ART OF TOMORROW'

10 - 27 February

Ilminster Arts Centre, The Meeting House, East Street, ILMINSTER, TA19 0AN. Tuesday - Saturday 9.30am - 3pm. ilminsterartscentre.com. "Artwork by pupils and students from local schools."



MICHAEL PORTER 'IMPOSSIBLE LANDSCAPE 1'
(Oil and acrylic on paper, 55 x 53 cm, 2025)

Cosmos

"This major exhibition explores humanity's enduring fascination with the cosmos through an extraordinary blend of historic artefacts and contemporary artworks. *Cosmos* brings together works by celebrated artists including Yinka Shonibare, Christopher LeBrun, Cornelia Parker and RWA Academicians, alongside compelling pieces by established and emerging artists."

24 January - 19 April: RWA, Queen's Road, Clifton, BRISTOL, BS8 1PX. Tuesday - Sunday 10am - 5pm. £9.90 / £5.45. 0117 973 5129 / rwa.org.uk.



'SPRING 2026'

13 February - 12 July

Tincton Gallery, The Old School House, TINCLETON, near Dorchester, DT2 8QR. Saturday and Sunday 10am - 4pm. 01305 848909 / tinctongallery.com. "Mixed show by Tincton Gallery artists Imogen Bittner, Kim Pragnell (above), Mary Gillett, Philippa Headley, and Ruth Ander, plus guest artists Johannes von Stumm, Alison Wear, Almuth Tebbenhoff, and Ruth Chapman."

'VIEWPOINTS'

14 - 20 February

Malthouse Gallery, The Town Mill, LYME REGIS, DT7 3PU. 10am - 4.30pm. joolswoodhouse.com. "Six Wessex artists respond to the diverse landscape around them. Paintings, artist designed tableware, paper forms, wood sculpture, vessels and collage."

DIDI LITTLEWOOD & LILLY TIGWELL: 'MAKER'S TABLE'

18 February - 15 March

Walford Mill Crafts, Stone Lane, WIMBORNE, BH21 1NL. Wednesday - Saturday 10am - 5pm. Sunday 11am - 4pm. walfordmillcrafts.co.uk.

SARA WESTAWAY: 'GLIMMERS'

25 February - 3 March

The Gallery, Shaftesbury Arts Centre, Bell Street, SHAFTESBURY, SP7 8AR. Monday - Saturday 10am - 4pm. shaftesburyartscentre.org.uk. "Landscapes, flora and fauna showing moments of joy."

BETTY SARGENT: 'FRAGMENTS OF JOY'

27 February - 28 March

The Pound Arts Centre, Pound Pill, CORSHAM, SN13 9HX. Monday - Friday 9am - 9.30pm, Saturday 9am - 4pm. poundarts.org.uk.

Kit Glaisyer

The Cinematic Landscape

Kit Glaisyer Fine Art

kitglaisyer.com

11 Downes Street, Bridport, Dorset DT6 3JR

Open Saturdays 10am to 3pm & by Appointment 07983 465789

Simon Hitchens

Simon Hitchens has been making sculpture for over thirty years and has spent his creative life exploring the connections between the human and the inanimate. His large-scale public works, frequently combining rock with resin or bronze, have immense presence and are made to resonate and interact with their location. Place and landscape - he comes from a long line of landscape painters - are crucial to his work. The land itself in the form of rock is integral to many works, carved in his early work, added unaltered in his later sculptures. A passionate climber, rocks have been a lifelong source of fascination.

Hitchens' work explores the contrast between the transience of human life and the longevity of rock and mountains. Rock is central, sourced directly from the landscape or from quarries. In drawings he uses stones to record the movement of the sun throughout the day, so it too is linked to transience and the passage of time.

Time is a crucial element in Hitchens' drawings: human time, celestial time and geological time. He is a perfect fit for the upcoming show at RWA Bristol, *Cosmos: The Art of Observing Space* curated by artist Ione Parkin. He will be showing *Passage*, a monumental cast concrete sculpture and *Orbit*, a suite of twelve durational drawings.

Passage is the result of years of experimentation, exploring the nature of the materials he uses and researching how to make his cast concrete works. Technically there is only one small part of the process that involves actual casting, but he enjoys the riff on the word 'cast' since it is making visible the cast noon shadows of an ancient and now absent rock.



'PASSAGE' (Cast concrete, 2025)

The twelve drawings for *Orbit*, record a year of observing the rising and setting of the sun as it arcs overhead, at equally spaced monthly intervals and using the same stone he found on site. "By returning to the same geographical location every month, these drawings demonstrate how the tilted axis of the Earth affects our seasons as it orbits the sun throughout the year, drawing our attention to things larger than ourselves."

He draws alone with rare interventions - the occasional intrigued farmer, flies and bees. In the country his companions range from sheep to pheasants and skylarks, although the loudest dawn chorus came from the parakeets, when making a recent drawing in Regents Park!

A huge amount of planning and research goes into sourcing his locations. He needs to be able to observe the rising

and setting sun unimpeded by a mountain, tree, or building for the whole day. Each day before dawn, he travelled to his location and drew until the sun went down. His non-stop drawings, over sixteen hours in summer and around eight in winter are made with a rotting pen. They trace the line of the shadow of the stone repeatedly as the sun ceaselessly changes position. They record the absence of light at that particular moment. It takes supreme control and an iron nerve knowing that a single pause or error could invalidate the day's work. It can be gruelling and relentless and some days he desperately wanted a cloud to obscure the sun. But he seems to have nerves of steel and his exquisite drawings, made with the human hand, appear flawless.

The *Orbit* drawings will be exhibited in *Cosmos* in the form of an ellipse showing very clearly the extraordinary changes created by the shadow of a stone through the cycle of the months. They record both absence and presence and they reveal Hitchens' core raison d'être. "I explore the nature of being through making my work."

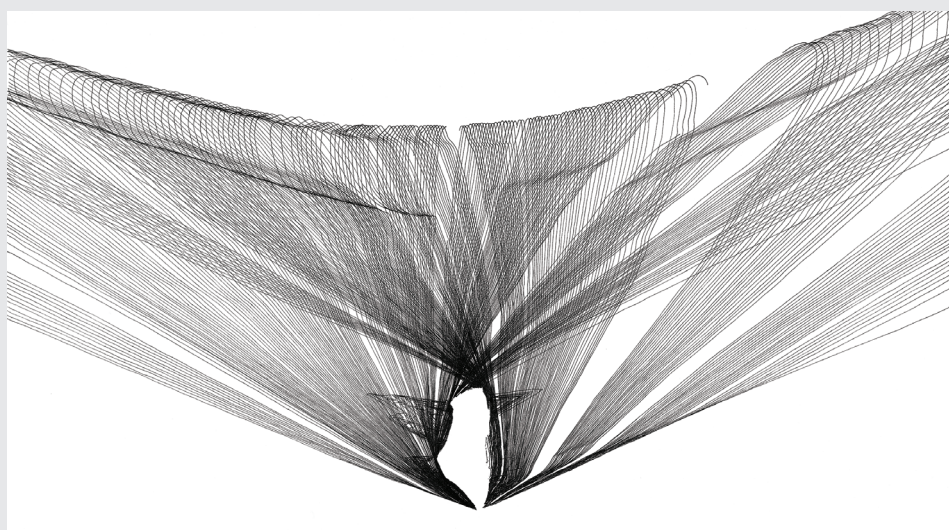
Fiona Robinson

'COSMOS'

24 January - 19 April

RWA, Queen's Road, Clifton, BRISTOL, BS8 1PX. Tuesday - Sunday 10am - 5pm.
£9.90 / £5.45. 0117 973 5129 / rwa.org.uk

simonhitchens.com



'ORBIT 4 - OCTOBER'

Music

January and February 2026

THE BIG DORSET MIDWINTER CEILIDH

10 January

Haryde Theatre, Queen's Avenue, DORCHESTER, DT1 2ET. 7.30pm. £13 / £7. dorchesterarts.org.uk.

KIRRISS RIVIERE & THE DELTA DU BRUIT

10 January

CICCIC, Paul Street, TAUNTON, TA1 3PF. 7.30pm. £20 / £17. 01823 337477 / ciccic.co.uk. "Haunting Louisiana blues and R&B."

'LOOFEST'

10 January

Sandy Hill Arts, Sandy Hill Lane, CORFE CASTLE, BH20 5JF. 6.30pm. £12. sandyhillarts.co.uk. "Glenn Ross and Angharad Holloway perform country music classics to raise funds for a new toilet block for Sandy Hill Arts."

BSO: 'VIVA ESPAÑA'

14 January

Lighthouse, 21 Kingland Road, POOLE, BH15 1UG. 7.30pm. 01202 280000 / lighthousepoole.co.uk.



PHIL BEER

15 January

The Corn Exchange, High East Street, DORCHESTER, DT1 1HF. 7.30pm. £22. dorchesterarts.org.uk.

ACOUSTIC MUSIC CLUB

15 January

CICCIC, Paul Street, TAUNTON, TA1 3PF. 7pm. £8 / £5. 01823 337477 / ciccic.co.uk.

BSO: 'VIVA ESPAÑA'

15 January

Great Hall, University of Exeter, Stocker Road, EXETER, EX4 4PY. 7.30pm. £41 / £16. bsolive.com.



Graffiti Classics

"Comedy string quartet who shatter the notion of classical music as elitist with their hilarious all-singing, all-dancing musical comedy show."

8 January: Village Hall, WOOTTON FITZPAINE, DT6 6NF.

7.30pm. £14 / £6. 01297 560948 / artsreach.co.uk.

9 January: Village Hall, LYCHETT MATRAVERS, BH16 6DD.

7.30pm. £14 / £6. 07795 467666 / artsreach.co.uk.

10 January: Corn Exchange, BLANDFORD, DT11 7AG. 7.30pm.

£14 / £6. 07729 786600 / artsreach.co.uk.

BSO: 'SERENADES AND STARBURSTS'

16 January

Minster Church of St Cuthburga, High Street, WIMBORNE MINSTER, BH21 1EB. 7pm. £21 / £5. 01202 669925 / bsolive.com.

SCOTT HAMILTON QUARTET

16 January

Lighthouse, 21 Kingland Road, POOLE, BH15 1UG. 8pm. lighthousepoole.co.uk. Jazz.

'BRISTOL URBAN WASSAIL'

16 January

73 Old Market Street, BRISTOL, BS2 0EJ. 7pm. £13. exchangebristol.com.

HEDERA

17 January

Lighthouse, 21 Kingland Road, POOLE, BH15 1UG. 8pm. 01202 280000 / lighthousepoole.co.uk.

THEO TRAVIS' DOUBLE TALK

18 January

The Grasshopper, 139 - 141 Bournemouth Road, POOLE, BH14 9HT. 7.30pm. £17.50 / £10. soundcellar.org.

SUNDAY BIG BAND

18 January

CICCIC, Paul Street, TAUNTON, TA1 3PF. 12.15pm. £20 / £15. 01823 337477 / ciccic.co.uk. Jazz.

BSO: 'PIANO PYROTECHNICS'

21 January

Lighthouse, 21 Kingland Road, POOLE, BH15 1UG. 7.30pm. 01202 280000 / lighthousepoole.co.uk.

JOSHUA RYAN AND CHRISTINE BURAS

21 January

The Pound Arts Centre, Pound Pill, CORSHAM, SN13 9HX. 1pm. £8. 01249 701628 / poundarts.org.uk.

SARAH MCQUAID

22 January

Village Hall, SHIPTON GORGE, DT6 4LZ. 7.30pm. £13 / £7.50. 01308 897649 / artsreach.co.uk. "Born in Spain, raised in Chicago, and now settled in rural Cornwall, Sarah brings warmth, wit, and intimacy to every performance."



SAM BROOKES

22 January

Sandy Hill Arts, Sandy Hill Lane, CORFE CASTLE, BH20 5JF. 7pm. £15. 07929 771219 / sandyhillarts.co.uk. "Alt-folk."

BOWIE FASHION

23 January

Ilminster Arts Centre, The Meeting House, East Street, ILMINSTER, TA19 0AN. 7.30pm. £20. 01460 54973 / themeetinghouse.org.uk.

JOHN KIRKPATRICK

23 January

The Pound Arts Centre, Pound Pill, CORSHAM, SN13 9HX. 7.30pm. £15. 01249 701628 / poundarts.org.uk. Folk.



INDEPENDENT RECORD STORE
Unit 29, Vicarage Walk,
The Quedam, Yeovil



**8 Pope Street
Brewery Square
Dorchester
Dorset DT1 1GW**
Tuesday to Saturday
from 10am



New and pre-loved vinyl, official t-shirts,
merchandise and memorabilia
**THE OLD SHAMBLES, SOUTH STREET,
SHERBORNE, DT9 3LU**
07730 356719
thebeatandtrack.co.uk



**St Michael's Estate
Bridport
Dorset DT6 3RR**
Monday to Saturday
10am - 4.30pm
01308 458077

Music

'A TRIBUTE TO THE CARPENTERS'

24 January

Salisbury Playhouse, Malthouse Lane, SALISBURY, SP2 7RA. 7.30pm. £43 / 20.50. wiltshirecreative.co.uk.

ALTERNATIVE TV + SOCIAL SECURITY

24 January

The Croft, 117 - 119 Stokes Croft, BRISTOL, BS1 3RW. 7.30pm. £18 / £16. : thecroftbristol.co.uk. "Mark Perry returns to his punk roots with a set of tunes from 1977 to 1981."

CLAUDE BOURBON

24 January

Caryford Hall, Maggs Lane, ANSFORD, Castle Cary, BA7 7JJ. 7.30pm. £15 / £12. caryfordhall.co.uk.

SARAH MCQUAID

24 January

Village Hall, STUDLAND, BH19 3BT. 7.30pm. £12.50 / £6. 01929 450587 / artsreach.co.uk. See 22 January.

SARAH MCQUAID

25 January

Village Hall, MILBORNE ST ANDREW, DT11 0JX. 7.30pm. £12.50 / £6. artsreach.co.uk. See 22 January.

HEDERA

25 January

Marine Theatre, Church Street, LYME REGIS, DT7 3QB. 8pm. £18 / £16. marinetheatre.com.

BSO: 'CLASSICAL HEIGHTS'

28 January

Lighthouse, 21 Kingland Road, POOLE, BH15 1UG. 7.30pm. 01202 280000 / lighthousepoole.co.uk.

'THE MAGIC OF MOTOWN'

29 January

Salisbury Playhouse, Malthouse Lane, SALISBURY, SP2 7RA. 7.30pm. £21 - £43. wiltshirecreative.co.uk.

'HANDEL'S FIREWORKS'

29 January

Lighthouse, 21 Kingland Road, POOLE, BH15 1UG. 7.30pm. 01202 280000 / lighthousepoole.co.uk.

BSO: 'CLASSICAL HEIGHTS'

29 January

Great Hall, University of Exeter, Stocker Road, EXETER, EX4 4PY. 7.30pm. £41 / £16. bsolive.com.



Moscow Drug Club

"Combining original material with songs by the likes of Jacques Brel, Tom Waits, Leonard Cohen and Eartha Kitt, Moscow Drug Club deliver an intoxicating and intimate musical experience. Featuring guitar, accordion, double bass, trumpet and vocals, don't miss this hugely popular group!"

30 January: Village Hall, DRIMPTON, DT8 3RF. 7.30pm. £15 / £6. 07771 554601 / artsreach.co.uk.

31 January: Village Hall, CERNE ABBAS, DT2 7GY. 7.30pm. £15 / £6. 07823 778758 / artsreach.co.uk.

12 February: Salisbury Arts Centre, Bedwin Street, SALISBURY, SP1 3UT. 7.30pm. £20 - £24. 01722 320333 / wiltshirecreative.co.uk.

22 February: Caryford Hall, Maggs Lane, Ansford, CASTLE CARY, BA7 7JJ. 4pm. £16.50 / £15. caryfordhall.co.uk.



THE HENRY GIRLS

30 January

Salisbury Rugby Club, Castle Road, SALISBURY, SP1 3SA. 7.30pm. £22.50. 07851 758457. "Irish traditional and contemporary music."

THE BALERS

30 January

The Ropemakers, 36 West Street, BRIDPORT, DT6 3QP. 8.30pm. 01308 421255 / theropemakers.com. "Songs of love, loss and the local landscape, with upbeat tunes and a healthy dose of Somerset humour."

DANIEL CASIMIR

30 January

Lighthouse, 21 Kingland Road, POOLE, BH15 1UG. 7.45pm. 01202 280000 / lighthousepoole.co.uk. Jazz.



LIFTER

30 January

CICCIC, Paul Street, TAUNTON, TA1 3PF. 7.30pm. £13 / £10. 01823 337477 / ciccic.co.uk. "Indie folk."



AXE & TRAP STUDIOS IS A RECORDING FACILITY SITUATED AT THE FOOT OF THE MENDIP HILLS IN WELLS, SOMERSET.

Three performance spaces, 24 channel Trident console, extensive analogue outboard and much more.

Take a tour at
AXEANDTRAPSTUDIOS.COM

 bournemouth
symphony orchestra

Concert Season 2025/26
Lighthouse, Poole

Awe-inspiring music, pure symphonic bliss

Join the BSO alongside exceptional conductors and soloists, playing the world's greatest classical music.

Whether you're listening in the Concert Hall or at home with a Digital Concert, your Wednesday nights just got wonderful.



bsolive.com **01202 669925**

Tincleton Gallery

contemporary music & fine art in Dorset



Amber Emson and Milda Daunoraite

Valentine's concert for violin & piano, to include:

Clara Schumann: *Three Romances*

Richard Strauss: *Violin Sonata in E-flat major*

The Old School House, Tincleton, near Dorchester, DT2 8QR
Fri 13 & Sat 14 Feb 2026 • 19:30 for 20:00 • £20
01305 848909 • tinctongallery.com

CHAMBER MUSIC
MINI-TOURS

BRIDPORT — CREWKERNE
ILMINSTER

Concerts IN THE West 2026

- 13–14 FEBRUARY **Daniel Lehardt** PIANO
- 13–14 MARCH **Geirprúður Guðmundsdóttir**
CELLO & **Antoine Préat** PIANO
- 10–11 APRIL **Ensemble Augelletti**
Olwen Foulkes RECORDERS — Ellen Bundy VIOLIN
Carina Drury CELLO — Toby Carr LUTES
Benedict Williams KEYBOARDS
- 15–16 MAY **Greenwich Trio**
Lana Trotovšek VIOLIN — Heather Tuach CELLO
Yoko Misumi PIANO
- 26–27 JUNE **Shiry Rashkovsky** VIOLA
& **Lana Suran** PIANO
- 10–11 JULY **Ceruleo**
Jenni Harper & Emily Owen SOPRANOS
Kinga Gáborjáni VIOLA DA GAMBA
Satoko Doi-Luck HARPSICHORD
- 18–19 SEPTEMBER **Sophie Rosa** VIOLIN
& **Ian Buckle** PIANO
- 16–17 OCTOBER **Oliver Wass** HARP
& **Gabriela Opacka-Boccardo** VIOLIN
- 6–7 NOVEMBER **Fenella Humphreys** VIOLIN
Sam Armstrong PIANO — **Gary Pomeroy** VIOLA
Cara Berridge CELLO

ONLINE booking
www.concertsinthewest.org
concertsinthewest@gmail.com

www.ciccic.co.uk

YOUR BUSINESS & PERSONAL EVENTS CAN
INSPIRE YOUR GUESTS
HIRE CICCIC

 Cafe & Catering
  Licensed Bar
  Screen & Projector

BUSINESSES - Great half day and full day hire rates with space for up to 80 people or less. Layout can be theatre style, cabaret or informal. Use our projector and Wi-Fi at no extra cost. Flip charts available, plus an inspiring and creative space with art gallery around the hall.

FUNCTIONS & PARTIES - Ideal for public gatherings, exhibitions, talks, private parties, launches, community events and much more. Includes use of our disco lights and Spotify. Live bands or other entertainment. Options for refreshments and with/without food.

> Get access from 8am to setup
 > Coffee/tea & FOOD options

> Use our marketing for your event
 > Licensed till midnight

Contact Us:
info@ciccic.co.uk
01823 337477

WWW.CICCIC.CO.UK
 Memorial Hall, Paut St, Taunton, TA1 3PF

ciccic creative innovation centre

Music

'MAN OF THE WORLD'

31 January

CICCIC, Paul Street, TAUNTON, TA1 3PF. 7.30pm. £20 / £17. ciccic.co.uk. *"The music of Peter Green."*

JULIAN STRINGLE & THE CRAIG MILVERTON TRIO

31 January

Ilminster Arts Centre, The Meeting House, East Street, ILMINSTER, TA19 0AN. 7.30pm. £20. 01460 54973.

REBECCA AND THE NEW JAZZ CODE

1 February

CICCIC, Paul Street, TAUNTON, TA1 3PF. 12.15pm. £16 / £13. 01823 337477 / ciccic.co.uk. Jazz.

'HOORAY FOR HOLLYWOOD'

3 February

The Corn Exchange, High East Street, DORCHESTER, DT1 1HF. 7.30pm. £15. 01305 266926 / dorchesterarts.org.uk. *"Liza Pulman and Joe Stilgoe bring the magic of Hollywood musicals to the stage."*

LEWIS KINGSLEY PEART

3 February

Lighthouse, 21 Kingland Road, POOLE, BH15 1UG. 1.05pm. 01202 280000. *Lunchtime recital.*

BSO: 'FATE AND FORTUNE'

4 February

Lighthouse, 21 Kingland Road, POOLE, BH15 1UG. 7.30pm. 01202 280000 / lighthousepoole.co.uk.

'MONKIN' AROUND'

5 February

The Grasshopper, 139 - 141 Bournemouth Road, POOLE, BH14 9HT. 7.30pm. £17.50 / £10 / £8.50. soundcellar.org. *"Star-studded quartet pay homage to the music of Thelonius Monk."*

EUROPEAN SUN + BUSH & FEY + BEAT KINKAID

5 February

The Thunderbolt, 124 Bath Road, BRISTOL, BS4 3ED. 7.30pm. £10 / £8. 0117 373 8947.

BSO: 'THE BEST OF WILLIAMS & ZIMMER'

5 February

Weymouth Pavilion, The Esplanade, WEYMOUTH, DT4 8ED. 7.30pm. £29 / £17. 01305 783225 / bsolive.com.



VRi

"Inspired by the incredible story of a time when Wales' traditional music and dance were suppressed by Methodist chapels and, earlier, its language by the Act of Union, VRi shed new light on a vibrant folk tradition. Their music harnesses the raw energy of the fiddle with the finesse of the violin, and the beauty of chamber music with the joy and hedonism of a pub session, all underpinned by powerful vocal harmonies."

6 February: Village Hall, LANGTON MATRAVERS, BH19 3HA. 7.30pm. £14 / £6. 01929 423834 / artsreach.co.uk.

7 February: Memorial Hall, STURMINSTER MARSHALL, BH21 4BQ. 7.30pm. £14 / £6. 07903 057427 / artsreach.co.uk.

8 February: Village Hall, BURTON BRADSTOCK, DT6 4QD. 3pm. £14 / £7. 01308 897403 / artsreach.co.uk.

THE UNRAVELLING WILBURYS

5 February

Salisbury Arts Centre, Bedwin Street, SALISBURY, SP1 3UT. 7.30pm. £22 - £26. wiltshirecreative.co.uk.

STRINGFEVER

6 February

Jubilee Hall, Ritherdons Lane, LANGFORD BUDVILLE, Wellington, TA21 0RL. 7pm. £25 / £7. 03336 663366 / milvertonconcerts.org. *"Classical and popular favourites, performed on electric stringed instruments."*



SECKOU KEITA HOMELAND BAND

6 February

Lighthouse, 21 Kingland Road, POOLE, BH15 1UG. 7.30pm. 01202 280000 / lighthousepoole.co.uk.

'IN CIDER FESTIVAL'

6 - 8 February

Sand Bay Holiday Village, 67 Beach Road, WESTON-SUPER-MARE, BS22 9UR. inciderfestival.com. *"Three day indoor music festival featuring She Drew The Gun, Beans On Toast, The Longest Johns and many more."*

BUZZ BURRELL

7 February

Sandy Hill Arts, Sandy Hill Lane, CORFE CASTLE, BH20 5JF. 7pm. £8. 07929 771219 / sandyhillarts.co.uk.

'JELLI FEST'

8 February

The Hen and Chicken, 210 North Street, Southville, BRISTOL, BS3 1JF. 3pm. £15. 07971 966982. *"Eclectic mix of live music from eight acts."*



RUM JUNGLE

9 February

The Phoenix, Gandy Street, EXETER, EX4 3LS. 7.30pm. £15. 01392 667080 / exeterphoenix.org.uk.

BSO TEA TIME TRIO: 'CAKE CONCERT'

11 February

Village Hall, CHILD OKEFORD, DT11 8EX. 11am. £6. 01258 861621 / artsreach.co.uk. *"Cake Concerts are relaxed chamber performances specifically developed for people living with dementia, but all are welcome, whether living in the community or in care and residential homes."*

BSO: 'PLAYFUL SHOSTAKOVICH'

11 February

Lighthouse, 21 Kingland Road, POOLE, BH15 1UG. 7.30pm. 01202 280000 / lighthousepoole.co.uk.

SHERBORNE TIMES

A MONTHLY CELEBRATION OF PEOPLE, PLACE AND PURVEYOR

OUT NOW AND ONLINE

sherbornetimes.co.uk

Artist at Work No.85:
Rizwan Javed MBE by Jack Dickson



Music

VIVA

12 February

St Philip & St James Church,
Vicarage Lane, NORTON ST PHILIP,
Bath, BA2 7LY. 1pm. £10. 01373
834488. Jazz.

BSO: 'PLAYFUL SHOSTAKOVICH'

12 February

Great Hall, University of Exeter,
Stocker Road, EXETER, EX4 4PY.
7.30pm. £41 / £16. bsolive.com.

SIAN & ROB COLQUHOUN

12 February

Arundells, 59 The Close, SALISBURY,
SP1 2EN. 7pm. £16. 01722 326546 /
arundells.org. "Old-time country and
early bluegrass."

DANIEL LEBHARDT

13 February

Ilminster Arts Centre, The Meeting
House, East Street, ILMINSTER, TA19
0AN. 7.30pm. £20. 01460 54973.

YESTERDAY'S YOUTH

13 February

CICCIC, Paul Street, TAUNTON, TA1
3PF. 8.30pm. £16 / £13. ciccic.co.uk.

RED SKY JULY

13 February

The Pound Arts Centre, Pound Pill,
CORSHAM, SN13 9HX. 7.30pm. £14.
01249 701628 / poundarts.org.uk.



AMBER EMSON AND MILA DAUNORAITE

13 and 14 February

Tincton Gallery, The Old School
House, TINCLETON, near
Dorchester, DT2 8QR. 7.30pm. £20.
tinctongallery.com. "An evening of
romantic dialogue between violin
and piano this Valentine's Day."

BSO: 'SMOOTH VALENTINE CLASSICS'

14 February

Lighthouse, 21 Kingland Road,
POOLE, BH15 1UG. 7pm. 01202
280000 / lighthousepoole.co.uk.



Happy Mouth

"Contemporary folk."

21 February: Sandy Hill Arts, Sandy Hill Lane, CORFE CASTLE,
BH20 5JF. 7pm. £10. 07929 771219 / sandyhillarts.co.uk.

THE KYAN QUARTET

15 February

Bournemouth University,
Kimmeridge House, Bournemouth
University, Talbot Campus, POOLE,
BH12 5BB. 3pm. £25. 01202 745516
/ bournemouthchambermusic.co.uk.

SUNDAY BIG BAND

15 February

CICCIC, Paul Street, TAUNTON, TA1
3PF. 12.15pm. £20 / £15. 01823
337477 / ciccic.co.uk. Jazz.

DANIEL HART

18 February

The Pound Arts Centre, Pound Pill,
CORSHAM, SN13 9HX. 1pm. £8.
01249 701628 / poundarts.org.uk.

MOONFISH + ALEX HITCHCOCK

19 February

The Grasshopper, 139 - 141
Bournemouth Road, POOLE, BH14
9HT. 7.30pm. £17.50 / £10 / £8.50.
soundcellar.org. "Jazz meets
electronics meets powerful grooves."

ACOUSTIC MUSIC CLUB

19 February

CICCIC, Paul Street, TAUNTON, TA1
3PF. 7pm. £8 / £5. ciccic.co.uk.

BSO TEA TIME TRIO: 'CAKE CONCERT'

20 February

Pine Martin Grange, WAREHAM,
BH20 7AJ. 11am. £6. 07879 473693
/ artsreach.co.uk. See 11 February.

JESSIE REID

21 February

The Pound Arts Centre, Pound Pill,
CORSHAM, SN13 9HX. 7.30pm. £14.
01249 701628 / poundarts.org.uk.
"Hushed, confessional vocals and
percussive, folk-influenced guitar."

CELTIC ILLUSION

21 February

Lighthouse, 21 Kingland Road,
POOLE, BH15 1UG. 7.30pm. 01202
280000 / lighthousepoole.co.uk.
"Fusing the thunderous rhythm of
Irish dance with mind-blowing
magic, Celtic Illusion breaks
boundaries like never before."

LOUIS & THE IGUANAS

21 February

CICCIC, Paul Street, TAUNTON, TA1
3PF. 8.30pm. £20 / £17. 01823
337477 / ciccic.co.uk. "Soul, ska,
reggae and R'n'B ten-piece band."

YUNMI SANG AND THE BEJE TRIO

22 February

Marine Theatre, Church Street, LYME
REGIS, DT7 3QB. 8pm. £18 / £16.
marinetheatre.com. "Soul and jazz."

THE RIDGEWAY SINGERS & BAND: 'TEA WITH WILLIAM BARNES'

22 February

The Exchange, STURMINSTER
NEWTON, DT10 1FH. 3pm. £16.
01258 475137 / artsreach.co.uk.

BSO: 'WIGGLESWORTH CONDUCTS ELGAR'

25 February

Lighthouse, 21 Kingland Road,
POOLE, BH15 1UG. 7.30pm. 01202
280000 / lighthousepoole.co.uk.

BSO TEA TIME TRIO: 'CAKE CONCERT'

25 February

Village Hall, MILBORNE ST ANDREW,
DT11 0JX. 11am. £6. 07983 231956
/ artsreach.co.uk. See 11 February.

BSO: 'WIGGLESWORTH CONDUCTS ELGAR'

26 February

Bristol Beacon, Trenchard Street,
BRISTOL, BS1 5AR. 7pm. £57 / £10.
0117 203 4040 / bsolive.com.

NICK HARPER

26 February

Lighthouse, 21 Kingland Road,
POOLE, BH15 1UG. 7pm. 01202
280000 / lighthousepoole.co.uk.

MIKE DENHAM SPEAKEASY

26 February

The Corn Exchange, High East
Street, DORCHESTER, DT1 1HF.
7.30pm. £17 / £15. 01305 266926.

THE TERRY HILL ENSEMBLE

27 February

Salisbury Arts Centre, Bedwin Street,
SALISBURY, SP1 3UT. 2.30pm. £7 -
£11. 01722 320333. Jazz.

MIKE DENHAM & EMMA FISK

27 February

Ilminster Arts Centre, The Meeting
House, East Street, ILMINSTER, TA19
0AN. 7.30pm. £20. 01460 54973.

RACHEL NEWTON

28 February

The Pound Arts Centre, Pound Pill,
CORSHAM, SN13 9HX. 7.30pm. £15.
01249 701628 / poundarts.org.uk.

MUSIC, THEATRE & MORE TOURING ACROSS DORSET

Visit www.artsreach.co.uk to view our full programme of events and venues

Registered charity no. 1058198

Sarah McQuaid
Singer-songwriter
22 - 25 January

Danny Mellor
Undermined
23 - 24 January

Moscow Drug Club
World Jazz & Folk Band
30 - 31 January

VRi
Welsh Folk Trio
6 - 8 February

Luke Wright
Later Life Letter
13 - 15 February

Performance

January and February 2026

'SWAN LAKE'

15 and 16 January

Lighthouse, 21 Kingland Road,
POOLE, BH15 1UG. 7.30pm. 01202
280000 / lighthousepoole.co.uk.

'BEAUTY AND THE BEAST'

16 January

The Corn Exchange, High East
Street, DORCHESTER, DT1 1HF.
7.30pm. £15 / £13. 01305 266926.

MILTON JONES

17 January

Hardye Theatre, Queen's Avenue,
DORCHESTER, DT1 2ET. 7.30pm.
£25 / £23. 01305 266926 /
dorchesterarts.org.uk. Comedy.

SPITZ & CO: 'THE SPY WHO LOVED ME TENDER'

17 January

Backyard Theatre, 5 Anchor Street,
WATCHET, TA23 0AZ. 7.30pm. £15.
backyard-theatre-watchet.uk.

'THE NUTCRACKER'

17 and 18 January

Lighthouse, 21 Kingland Road,
POOLE, BH15 1UG. Saturday 2.30
and 7.30pm, Sunday 2.30pm. 01202
280000 / lighthousepoole.co.uk.

'PARODY OF THE RINGS'

22 January

Lighthouse, 21 Kingland Road,
POOLE, BH15 1UG. 7.45pm. 01202
280000 / lighthousepoole.co.uk.



DANNY MELLOR: 'UNDERMINED'

23 January

Memorial Hall, PIDDLTRENTHIDE,
DT2 7QF. 7.30pm. £12.50 / £6.
07786 880676 / artsreach.co.uk.

"Inspired by the accounts of miners
who lived through the 1984 Miners'
Strike, Danny Mellor takes you on a
rollercoaster of emotions in a year-
long period of political turmoil."



Rock & Roll Man

"Alan Freed was more than a DJ - he was a visionary. Hearing the future in the rhythm and voices of a new generation, he integrated audiences and artists, broke down barriers on the airwaves and in concert halls, and helped ignite a cultural revolution. Along the way, he became an icon to the nation's youth - and a target for the nation's establishment. *Rock & Roll Man* brings his story to life with explosive original songs written for the stage, alongside iconic hits by Little Richard, Chuck Berry, LaVern Baker, Buddy Holly, Bo Diddley, Jerry Lee Lewis, The Drifters, The Coasters and The Platters. Audiences can expect to hear legendary genre-defying tracks including *Tutti Frutti*, *Maybellene*, *Great Balls of Fire*, *Yakety Yak*, and *Why Do Fools Fall in Love*. *Rock & Roll Man* is the original musical about a musical original - a celebration of the man who gave Rock & Roll its name and inspired the generation that changed society forever."

13 February - 7 March: Salisbury Playhouse, Malthouse Lane, SALISBURY, SP2 7RA. 7.30pm (Matinees 2.15pm). £12. 01722 320333 / wiltshirecreative.co.uk.

RUSSELL HICKS: 'THIS TIME IT'S PERSONAL'

23 January

Salisbury Arts Centre, Bedwin Street,
SALISBURY, SP1 3UT. 8pm. £22.
wiltshirecreative.co.uk. "Russell
reflects on his film success, viral hits
and unforgettable year."

'PARODY OF THE RINGS'

23 January

The Corn Exchange, High East
Street, DORCHESTER, DT1 1HF.
7.30pm. £20 / £18. 01305 266926 /
dorchesterarts.org.uk.

'ENIGMA OF EDWARD ELGAR'

23 January

St Philip & St James Church,
Vicarage Lane, NORTON ST PHILIP,
Bath, BA2 7LY. 2pm. £15. 01373
834488 / hardingtonvale.org.uk.
"Actor and pianist Michael Lunts
brings Edward Elgar to life."

Shaftesbury Arts Centre



Downton Abbey: The Grand Finale

Film (12)
13 January • 2pm • £5



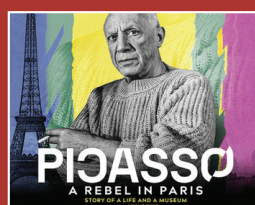
Shaftesbury Festival of Baroque

21 - 25 January
10 performances, see website



Alice in Wonderland - A Pantomime

22 - 31 Jan • 7.30pm (2.30 Sats)
£16.50 / £14.50 / u12s £11



Picasso - A Rebel in Paris

Live Recording
4 Feb • 7pm • £15 / £12.50



Sara Westaway 'Glimmers'

25 February - 3 March
10am - 4pm daily

11 - 13 Bell Street, Shaftesbury, Dorset SP7 8AR 01747 854321 • shaftesburyartscentre.org.uk

Performance

ANDREW WHITE

23 January

Lighthouse, 21 Kingland Road,
POOLE, BH15 1UG. 8pm.
lighthousepoole.co.uk. *Comedy.*

CEILIDH FACTOR

24 January

St John's Place, Lower Road,
Bemerton, SALISBURY, SP2 9NP.
7pm. £22. 01722 331440 /
arundells.org. *"High-energy evening
of music and dancing in celebration
of Burns Night."*

DANNY MELLOR: 'UNDERMINED'

24 January

Village Hall, WEST STAFFORD, DT2
8AG. 7.30pm. £12.50 / £6.
artsreach.co.uk. *See 23 January.*

ROBIN MORGAN: 'LET'S OVERSHARE!'

24 January

CICCIC, Paul Street, TAUNTON, TA1
3PF. 7.30pm. £19 / £15. 01823
337477 / ciccic.co.uk. *Comedy.*

OMID DJALILI: 'NAMASTE'

27 January

Salisbury Playhouse, Malthouse
Lane, SALISBURY, SP2 7RA. 7.30pm.
£33. wiltshirecreative.co.uk. *"Fury,
wit, and comedy collide."*

'SHOWSTOPPER! THE IMPROVISED MUSICAL'

27 - 31 January

Old Vic, King Street, BRISTOL, BS1
4ED. 7.30pm. 0117 987 7877 /
bristololdvic.org.uk. *"The award-
winning, hilarious phenomenon
where audiences shape a brand-new,
one-night-only musical every
performance."*

'THE SHAWSHANK REDEMPTION'

27 - 31 January

Lighthouse, 21 Kingland Road,
POOLE, BH15 1UG. 7.45pm
(Wednesday and Saturday matinees
3pm). lighthousepoole.co.uk.

'RÉVERIE'

28 January

Salisbury Playhouse, Malthouse
Lane, SALISBURY, SP2 7RA. 7.30pm.
£21 - £35. 01722 320333 /
wiltshirecreative.co.uk. *"A composer
portrait of Claude Debussy
combining composers' words and
music scripted by Lucy Parham."*



Judi Love

"A hilarious, heartfelt show on parenting, work, life's surprises,
struggles and how love keeps you sane."

30 January: Salisbury Playhouse, Malthouse Lane, SALISBURY,
SP2 7RA. 7.30pm. £33. 01722 320333 / wiltshirecreative.co.uk.

'THE JANE AUSTEN FAN CLUB'

29 January

Lighthouse, 21 Kingland Road,
POOLE, BH15 1UG. 8pm.
lighthousepoole.co.uk. *"High drama,
breathless romance, and extremely
proficient dancing (perhaps)."*

'RANK'

29 January

The Corn Exchange, High East
Street, DORCHESTER, DT1 1HF.
7.30pm. £14 / £12. 01305 266926 /
dorchesterarts.org.uk. *"A taxi driver's
life is turned upside down by an epic
encounter with a young woman and
her two small children."*

'CABARET WITH BALLS'

29 January

The Exchange, STURMINSTER
NEWTON, DT10 1FH. 7.30pm. £16 /
£8. artsreach.co.uk. *"Charlie Bicknell
and Louise Innes showcase their
inimitable mash of the irreverent and
surreal."*



'HOLMES & WATSON AND THE CURIOUS CASE OF THE MASKED MAGICIAN'

31 January

The Mowlem, Shore Road,
SWANAGE, BH19 1DD. 2pm. £13.
themowlem.com.

'CROONERS'

31 January

Salisbury Playhouse, Malthouse
Lane, SALISBURY, SP2 7RA. 7.30pm.
£21 - £33. wiltshirecreative.co.uk. *"A
superbly original comedy music
show combining laugh-out-loud
silliness with a splendiferous
injection of Big Band swing."*

GEOFF NORCOTT

31 January

Salisbury Arts Centre, Bedwin Street,
SALISBURY, SP1 3UT. 7.30pm.
£22.50. wiltshirecreative.co.uk.
*"Sharp wit, brutal honesty and
hilarious takes on politics, life and
confusion."*

'RANK'

31 January

Lighthouse, 21 Kingland Road,
POOLE, BH15 1UG. 8pm. 01202
280000. *See 29 January.*

GLENN MOORE

5 February

Lighthouse, 21 Kingland Road,
POOLE, BH15 1UG. 8pm.
lighthousepoole.co.uk. *Comedy.*

'LUCID CABARET'

6 February

Lighthouse, 21 Kingland Road,
POOLE, BH15 1UG. 8pm. 01202
280000 / lighthousepoole.co.uk.
"Rip-roaring ridiculousness."

ROBIN MORGAN: 'LET'S OVERSHARE'

6 February

The Pound Arts Centre, Pound Pill,
CORSHAM, SN13 9HX. 7.30pm. £15.
poundarts.org.uk. *Comedy.*

'THIRD CLASS'

7 February

Lighthouse, 21 Kingland Road,
POOLE, BH15 1UG. 8pm. 01202
280000 / lighthousepoole.co.uk.

AMY MASON: 'BEHOLD'

7 February

The Pound Arts Centre, Pound Pill,
CORSHAM, SN13 9HX. 7.30pm. £16.
01249 701628 / poundarts.org.uk.

JOHN HEGLEY

7 February

Merlin Theatre, Bath Road, FROME,
BA11 2HG. 7.30pm. £15.
merlintheatre.co.uk.

'DR JEKYLL AND MR HYDE'

7 February

Backyard Theatre, 5 Anchor Street,
WATCHET, TA23 0AZ. 7.30pm. £15.
backyard-theatre-watchet.uk.

TAUNTON COMEDY CLUB

7 February

CICCIC, Paul Street, TAUNTON, TA1
3PF. 8pm. £19 / £15. ciccic.co.uk.

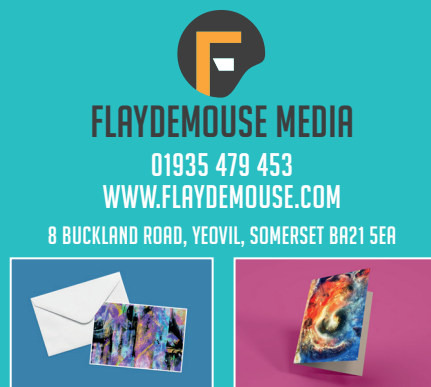


PERFECT POSTERS

SCANNING • PHOTOGRAPHY • CALENDARS • INVITATIONS • BOOKMARKS • BROCHURES • FLYERS • STICKERS
BANNERS • FOAMEX SIGNS • LETTERHEADS • BUSINESS CARDS • FOLDERS • DESKPADS • BESPOKE ITEMS



AMAZING GICLÉE PRINTS



POSTCARDS AND GREETING CARDS

FLAYDEMOUSE MEDIA

01935 479 453

WWW.FLAYDEMOUSE.COM

8 BUCKLAND ROAD, YEODIL, SOMERSET BA21 5EA

Performance



Luke Wright: Later Life Letter

"Acclaimed poet Luke Wright shares his adoption story - of the life he leads, and the one he might have done. What's it like to stumble across your birth mother on Facebook? How do you honour the parents who have raised you while satisfying a curiosity about where you came from? Is it telling that you married a social worker? Wright guides the audience through a warm and honest evening of poetry and stand-up, delivered with the wit, pathos, and silliness that has made him one of England's most popular live poets."

30 January: The Pound Arts Centre, Pound Pill, CORSHAM, SN13 9HX. 7.30pm. £15. 01249 701628 / poundarts.org.uk.

13 February: Village Hall, CHETNOLE, DT9 6NU. 7.30pm. £12.50 / £6. artsreach.co.uk.

14 February: The Mowlem Studio, SWANAGE, BH19 1DD. 7.30pm. £13 / £6. 03336 663366 / artsreach.co.uk.

15 February: Village Hall, IBBERTON, DT11 0EL. 7.30pm. £12.50 / £6. 07771 561099 / artsreach.co.uk.

WILL ADAMSDALE: 'AI, AI, OH...'

7 February

Salisbury Arts Centre, Bedwin Street, SALISBURY, SP1 3UT. 7.30pm. £19 - £23. wiltshirecreative.co.uk. Comedy.

'GLORIOUS!'

10 - 14 February

Lighthouse, 21 Kingland Road, POOLE, BH15 1UG. 7.45pm (Thursday and Saturday matinees 2.30pm). lighthousepoole.co.uk.

EMMANUEL SONUBI

12 February

Lighthouse, 21 Kingland Road, POOLE, BH15 1UG. 8pm. 01202 280000 / lighthousepoole.co.uk. Comedy.

SPITZ & CO: 'THE SPY WHO LOVED ME TENDER'

12 February

Village Hall, WOOTTON FITZPAINE, DT6 6NF. 7.30pm. £12.50 / £6. 01297 560948 / artsreach.co.uk.

GLENN MOORE

13 February

Salisbury Arts Centre, Bedwin Street, SALISBURY, SP1 3UT. 7.30pm. £20.50. 01722 320333 / wiltshirecreative.co.uk. Comedy.

SPITZ & CO: 'THE SPY WHO LOVED ME TENDER'

13 February

Village Hall, MARNHULL, DT10 1JZ. 7.30pm. £12.50 / £6. 01258 820458.

SPITZ & CO: 'THE SPY WHO LOVED ME TENDER'

14 February

Village Hall, BRIANTSPUDDLE, DT2 7HT. 7.30pm. £13 / £6. 07788 100273 / artsreach.co.uk.

ANIA MAGLIANO: 'PEACH FUZZ'

14 February

The Pound Arts Centre, Pound Pill, CORSHAM, SN13 9HX. 7.30pm. £15. poundarts.org.uk. "Fresh from Taskmaster, Ania Magliano brings a new show of jokes, confessions and unhinged observations."

'THE COMPLETE WORKS OF JANE AUSTEN ABRIDGED'

14 February

The Corn Exchange, High East Street, DORCHESTER, DT1 1HF. 7.30pm. £17 / £15. 01305 266926 / dorchesterarts.org.uk. "Three nimble actors take on all of Austen's beloved heroines, friends, and love interests - and her incisive social satire - in just 80 minutes."

lighthouse

Arts & Entertainment | Poole



THU 5 FEBRUARY

Hangover Hill and Lighthouse presents

Live and Unheard: Legends

From the Live and Unheard series comes Legends, a very special show featuring renowned guest headliner Ben Waters, plus brilliant former Live and Unheard bands The Outlaw Orchestra and Chris Payn & The Parade.



FRI 6 FEBRUARY

Seckou Keita Homeland Band

Following on from the acclaimed performance at Lighthouse with the Bournemouth Symphony Orchestra in African Rhapsodies, award-winning virtuoso Seckou Keita returns with Homeland, his all-star band of Senegalese musicians.



WED 4 - THU 5 MARCH

Stolen Ram

From the makers of Pot Licker... Zara is in deep trouble. She's involved with shady, unscrupulous characters motivated only by greed and pursuit of power. Well, it was her choice to take that job in school senior management.



THU 5 MARCH

Spiers & Boden

Spiers & Boden have been at the forefront of the English traditional folk scene for 25 years, both as a groundbreaking duo and as founder members of folk phenomenon Bellowhead.



THU 19 MARCH

Pepper and Honey

Written by a Croatian playwright and performed by a Croatian actor, Pepper & Honey is a poignant, subtle and timely play about the journey of change, cultural differences, trying not to feel like a foreigner in your adopted country, and the conflict between upholding the traditions of the "old country" and embracing those of the new.

! Different every day

Performance

'BINGO AT TIFFANY'S WITH AUDREY HEARTBURN'

14 February

Salisbury Arts Centre, Bedwin Street, SALISBURY, SP1 3UT. 7pm. £18 - £22. 01722 320333 / wiltshirecreative.co.uk.

'THE WOMAN IN BLACK'

17 - 21 February

Lighthouse, 21 Kingland Road, POOLE, BH15 1UG. 7.45pm (Thursday and Saturday matinees 2.30pm). 01202 280000 / lighthousepoole.co.uk.

'HOW TO CATCH A BOOK WITCH'

18 February

Village Hall, CHILD OKEFORD, DT11 8EX. 11am. £8 / £6. 01258 861621 / artsreach.co.uk. "This enchanting new show celebrates libraries, storytelling, and imagination, featuring live music and captivating puppetry."



'THE MISADVENTURES OF THOR'

19 February

The Exchange, STURMINSTER NEWTON, DT10 1FH. 10.30am. £8 / £6. 01258 475137 / artsreach.co.uk. "Join Ulf and Odd, two skilled skalds (or storytellers), as they bring ancient Nordic tales to life in a comedic romp through the world of Viking gods. Rattlebox and Angel Heart Theatre present a brand-new family show, with their usual flair for skilfully blending puppetry, storytelling and larger-than-life characters into a performance full of wonder and delight!"

'HOW TO CATCH A BOOK WITCH'

19 February

Community Hall, LITTON CHENEY, DT2 9AU. 10.30am. £8 / £6. 01308 482514 / artsreach.co.uk. See 18 February.



Tom Davis: Spudgun

"Freshly cooked observations on life's hot topics."

28 February: Lighthouse, 21 Kingland Road, POOLE, BH15 1UG. 7.45pm. 01202 280000 / lighthousepoole.co.uk.

'ATTENTION ALL SHIPPING'

19 February

The Corn Exchange, High East Street, DORCHESTER, DT1 1HF. 7.30pm. £20 / £18. 01305 266926. "As the shipping forecast enters its second century, Charlie Connelly's hilarious and insightful show brings this quirky broadcast to life."

'SIR CHARLIE STINKY SOCKS AND THE REALLY BIG ADVENTURE'

19 and 20 February

Salisbury Arts Centre, Bedwin Street, SALISBURY, SP1 3UT. £10 - £16. wiltshirecreative.co.uk.

'THE MISADVENTURES OF THOR'

20 February

Comrades Hall, BROADWINDSOR, DT8 3QP. 2pm. £8 / £6. 07740 949904. See 19 February.

'THE JANE AUSTEN FAN CLUB'

20 February

The Pound Arts Centre, Pound Pill, CORSHAM, SN13 9HX. 7.30pm. £14. 01249 701628 / poundarts.org.uk. See 29 January.

'THE NOISE NEXT DOOR'

21 February

The Corn Exchange, High East Street, DORCHESTER, DT1 1HF. 7.30pm. £17 / £15. 01305 266926 / dorchesterarts.org.uk. "Funny stuff, made up on the spot."

'THE JANE AUSTEN FAN CLUB'

21 February

Salisbury Arts Centre, Bedwin Street, SALISBURY, SP1 3UT. 7.30pm. £16 - £20. 01722 320333 / wiltshirecreative.co.uk. See 29 January.

'THE MISADVENTURES OF THOR'

21 February

Village Hall, SIXPENNY HANDLEY, SP5 5NJ. 11am. £8 / £6. artsreach.co.uk. See 19 February.

'ACROSS THE SQUARE'

24 February

The Corn Exchange, High East Street, DORCHESTER, DT1 1HF. 7.30pm. £16 / £14. 01305 266926 / dorchesterarts.org.uk.

'DARK FAIRY TALES FOR GROWN-UPS'

25 February

Arundells, 59 The Close, SALISBURY, SP1 2EN. 7pm. £18. 01722 326546 / arundells.org. "Enchantment and eerie storytelling for adults."

JIMEOIN: 'PANDEMONIUM'

25 February

Lighthouse, 21 Kingland Road, POOLE, BH15 1UG. 7.45pm. 01202 280000 / lighthousepoole.co.uk. Comedy.

'GAME OF CRONES'

27 February

The Corn Exchange, High East Street, DORCHESTER, DT1 1HF. 7.30pm. £16 / £14. 01305 266926 / dorchesterarts.org.uk. "Sharpen your swords and fill your goblets - the dragons are back!"

ROB AUTON: 'CAN'

27 February

The Pound Arts Centre, Pound Pill, CORSHAM, SN13 9HX. 7.30pm. £17.50. 01249 701628 / poundarts.org.uk.

ROB AUTON: 'CAN'

28 February

Lighthouse, 21 Kingland Road, POOLE, BH15 1UG. 8pm. 01202 280000 / lighthousepoole.co.uk.

'EYES DOWN'

28 February

Hall, STALBRIDGE, DT10 2NF. 7.30pm. £13 / £6. 01963 362355 / artsreach.co.uk. "Truly immersive comedy thriller."

'EYES DOWN'

1 March

Village Hall, SIXPENNY HANDLEY, SP5 5NJ. 7.30pm. £12.50 / £6. 07703 874659 / artsreach.co.uk. See 28 February.

ONE-STOP DESIGN, PRINT & MAILING

We're friendly and knowledgeable.
We're not flash or fancy, but we are really good at what we do.

Easy. Affordable. Dependable. Local.

Leaflets, flyers, brochures, booklets, magazines, folders and more.
Design, print and mailing – all in one place.

What can we print for you today?

enquiries@bishops.co.uk | bishops.co.uk | 023 9233 4900



Evolver Magazine Wessex Map and Sponsors



@@@ARTS
ARNOLFINI
EST. 1961

ART and BEYOND

Athelhampton
HOUSE & GARDENS

aztecmedia

b-side



BlackSwanArts

Boilerhouse
GALLERY

BOURNEMOUTH
ARTS
CLUB

bourneouth
symphony orchestra

BRIDPORT
ARTSCENTRE

BULL MILL STUDIO

ciccic

Concerts
IN THE West

Dorchester**Arts**

DORSET
VISUAL
ARTS

EAST
QUAY

HEART OF
THE TRIBE
ART GALLERY

arts
centre
AT THE MEETING HOUSE

Kit Glaisyer

lighthouse
Arts & Entertainment | Poole

Pound **Arts**

ramm

RWA

Shaftesbury
Arts Centre

SHERBORNE
TIMES

The Slade Centre

SLADERS YARD

SOW
someset
art works

Sou'-Sou'-West

SOUTH WEST ART
COURSES

THG
Thelma
Hulbert
Gallery

Tincleton Gallery

Walford Mill
Crafts

WHITE CHALK GALLERY

WILTSHIRE
CREATIVE

YEOVIL
ART SPACE

Evolver Magazine Wessex Outlets

EVOLVER MAGAZINE IS AVAILABLE
FREE AT THE FOLLOWING WESSEX
OUTLETS:

ABBOTSBURY: Abbotsbury Studio, Clare Hawkes Fine Art, Dandel Gallery.
ATHELHAMPTON: Athelhampton House.
AXMINSTER: Archway Bookshop, Heritage Centre, Unique Framecraft.
BATH: 44AD, Bath Artists' Studios, Beaux Arts, The Edge / ICIA, Holburne Museum, University of Bath. BEAMINSTER: Art and Beyond, Beamminster Books, Yarn Barton Centre. BLANDFORD: Blandford Fashion Museum, Bryanston Arts Centre, Forum Café, Forum Framers. BOURNEMOUTH: All Fired Up, Artcetera, Courtenay's Fine Art, Flux Framing, Pavilion Dance, Re-Imagine, Russell-Cotes Museum & Art Gallery. BOWER HINTON: The Hollies Hotel. BRADFORD ON AVON: **NEW!** The Crafty Hive, **NEW!** Little Rituals, Wiltshire Music Centre. BRIDGWATER: Bridgewater Arts Centre, Bridge Gallery, Engine Room. BROADWINDSOR: Record Vault.
BRIDPORT: Art Unlimited, Bridport Arts Centre, Bridport Old Books, The Bull Hotel, Clocktower Records, Kit Glaisyer Fine Art, Lyric Theatre, Millside Picture Framing. BRISTOL: Arnolfini, Bristol Beacon, Bristol Fine Art, Centrespaze, Clifton Contemporary, Clifton Fine Art, Create Centre, Folk House, Jamaica Street Artists, Lime Tree Gallery, New Cut Coffee, North Street Gallery, PRSC Gallery, RWA, Spike Island, St George's, Tobacco Factory, Trinity Centre, UWE, Watershed. BRUTON: At The Chapel, Bruton Museum. BUDLEIGH SALTERTON: Brook Gallery. BURNHAM ON SEA: Princess Theatre and Arts Centre, Seabreeze Gallery. CASTLE CARY: Bailey Hill Bookshop, David Simon Contemporary. CHARD: Hornsbury Mill. CHEDDON FITZPAINE: Hestercombe Gallery. CHIPPENHAM: Chippenham Museum. CHRISTCHURCH: Hatch Gallery, Red House Museum. CLEVEDON: Studio 3 Gallery. CORFE CASTLE: Boilerhouse Gallery, Mortons House Hotel, Seasons Green, Village Stores. CORSHAM: **NEW!** Oil & Ink, Pound Arts, **NEW!** Right Angle Picture Framing, **NEW!** The Corsham Bookshop, **NEW!** The Corsham Gallery. CREWKERNE: Art and Beyond. CROCKERTON: Bull Mill Arts. CROWCOMBE: Halsway Manor. CULLOMPTON: Cullompton Community College. DEVIZES: Wiltshire Museum. DORCHESTER: Activate, Arts

Development Company, Artsreach, Corn Exchange, Dorset Museum & Art Gallery, Duke's, Frank Herring & Sons, Gallery on The Square, Shire Hall Museum, The Little Keep, Vinyl Van. EAST LAMBROOK: East Lambrook Manor Gardens. EXETER: Academy of Music, Barnfield Theatre, Exeter School of Art, Glorious Art Cafe, Phoenix Arts Centre, Royal Albert Memorial Museum, Southgate Gallery. EXMOUTH: **NEW!** Artisan Art Gallery, **NEW!** Exmouth Pavilion, **NEW!** Sea Dog Art. FROME: Bat Print Studio, Black Swan Arts, Kobi & Teal, Merlin Theatre, Peradam, Raves From The Grave, Rook Lane Arts, Rise Centre. GILLINGHAM: The Idea Works, The Slade Centre. GLASTONBURY: Facets Of Avalon, Glastonbury Abbey, Glastonbury Galleries, Heart Of The Tribe Gallery, Red Brick Building, Rural Life Museum. HATCH BEAUCHAMP: Close Ltd. HESTERCOMBE: Hestercombe Gallery. HONITON: The Beehive, Thelma Hulbert Gallery. ILMINSTER: Iminster Arts Centre, The Millhouse. IWERNE MINSTER: The Writer's Block. KEYNSHAM: Chocolate Quarter. LANGPORT: Art Tea Zen, Great Bow Wharf, Shakspeare Glass. LYME REGIS: Blue Lias Gallery, Coombe Street Gallery, Fine Art & Framing, Lyme Regis Museum, Malthouse Gallery, Marine Theatre. LYCHETT MINSTER: Barn Cafe, Courtyard Craft Centre. MARLBOROUGH: Framemakers. MARTOCK: Martock Gallery, Yandles Cafe. MILVERTON: The Coffee Mill. MINEHEAD: Courtyard Framing, Leo Davey Gallery, Regal Theatre. MORCOMBELAKE: Artwave West. MUCHELNEY: Machelney Pottery. NORTH CURRY: Community Café. OTTERTON: Otterton Mill. PEWSEY: McNeill Gallery. POOLE: Arts University Bournemouth, Big Brother Records, Canvas Gallery, Guildhall Gallery, Josephine Wall Gallery, Lighthouse, Gallery Upstairs, Originals, Poole Museum, Towngate Gallery And Framing. PORLOCK: Churchgate Gallery. PORTLAND: B-Side Outpost, The Beehive, White Stones. SALISBURY: Fisherton Mill, Salisbury Arts Centre, Salisbury Museum, Salisbury Playhouse, Vanner Gallery, Wiltshire Gallery, Young Gallery. SEATON: **NEW!** Triptych Gallery. SEAVINGTON: Village Shop. SHAFTESBURY: The Cygnet, Pictureframes, Shaftesbury Arts Centre. SHEPTON MALLET: Kilver Court, One Craft Gallery. SHERBORNE: Caffè Nero,

Old Barn Framing Gallery, The Beat & Track, The Sherborne, Trouville Gallery, Winstone's. SIDMOUTH: East Devon Art Academy, Flo and Us, Kennaway House, **NEW!** South West Art, Winstone's. SOMERTON: ACE Arts, Gifted Company & Gallery Coffee Shop. STALBRIDGE: Dike & Sons. STOBOROUGH: Furzebrook Studios. STOKE ST GREGORY: Willow & Wetlands Centre. STOURHEAD: First View Gallery. STREET: Millfield School Atkinson Gallery, Strode Theatre. STURMINSTER NEWTON: The Exchange, Poet's Corner, Wessex Photographic. SWANAGE: Ballard and Bay Gallery, Durlston Castle, Mowlem Theatre, Mulberry Tree Gallery, Quarr Gallery. SYMONDSBURY: Sou'-Sou'-West. TAUNTON: Arts Hub, Brewhouse Theatre, CICCIC, Fine Art And Framing, Jane Armour Trading, Museum of Somerset, Quantock Art And Framing, Queen's College, Tacchi-Morris Arts Centre, University Centre Somerset. TINCLETON: Sculpture by the Lakes, Tincton Gallery. TIVERTON: Lantic Gallery. TROWBRIDGE: Court Street Gallery, The Lamb, Trowbridge Museum, **NEW!** Trowbridge Town Hall. WAREHAM: Priory Hotel, Purbeck Artisan Yard, Rex Cinema. WARMINSTER: Athenaeum Centre. WATCHET: East Quay. WELLINGTON: Old Brick Workshop, Talent Gallery. WELLS: A2 Gallery, Andelli Art, Bishop's Eye, Heritage Courtyard Gallery and Studios. WEST BAY: Sladers Yard. WEST COKER: Lanes, Old School Room. WESTHAY: Somerset Crafts. WEYMOUTH: Cove Gallery, Happy Crab Gallery, Weymouth College, Weymouth Pavilion. WILLITON: J Gliddon & Sons. WIMBORNE: Allendale House, Square Records, Walford Mill Craft Centre. WINCANTON: Paper Trees. WIVELISCOMBE: Community Office. WORTH MATRAVERS: Burngate Purbeck Stone Centre. YEOVIL: EPS, Westlands Entertainment Venue, Yeovil Art Space. YETMINSTER: Old School Gallery.

Plus selected TOURIST INFORMATION CENTRES and LIBRARIES throughout Wessex

We are always on the lookout for NEW EVOLVER OUTLETS. If you are running a venue in Wessex (see map on previous page) that is regularly frequented by arts and culture lovers, please email simon@evolver.org.uk for further information.

EVOLVER SPONSORS

ACE Arts
Arnolfini
Art And Beyond
Athelhampton House
Aztec Media
B-Side
Bishops Printers
Black Swan Arts
Boilerhouse Gallery
Bournemouth Arts Club
Bournemouth Symphony Orchestra (BSO)
Bridport Arts Centre
Bull Mill Studio
CICCIC
Concerts in the West
Dorchester Arts
Dorset Visual Arts (DVA)
East Quay
Heart of the Tribe Gallery
Iminster Arts Centre
Kit Glaisyer Fine Art
Lighthouse
Pound Arts
Royal Albert Memorial Museum (RAMM)
Royal West of England Academy (RWA)
Shaftesbury Arts Centre
Sherborne Times
The Slade Centre
Sladers Yard
Somerset Art Works
Sou'-Sou'-West Gallery
South West Art Courses
Thelma Hulbert Gallery
Tincton Gallery
Walford Mill
White Chalk Gallery
Wiltshire Creative
Yeovil Art Space

Our EVOLVER SPONSORS make Evolver Magazine possible. We couldn't do it without their ongoing support and advertising, so we make sure they get priority coverage in these pages and in our Instagram posts. If you'd like to join them, please email simon@evolver.org.uk to find out more (for example our quarter page Evolver Sponsors pay £190 instead of £260 for each bi-monthly advert).

FREE LISTINGS

Exhibition and performance listings can be uploaded at evolver.org.uk or emailed to listings@evolver.org.uk

Please send ALL information in the following order: Event, date(s), venue, address (including postcode), times, admission fee (if any), contact number / website, up to 30 words about your event

EVOLVER MAGAZINE 147

THE WESSEX ARTS AND CULTURE GUIDE

Editor SIMON BARBER

Assisted by SUZY RUSHBROOK
suzy@evolver.org.uk

Evolver Writer

FIONA ROBINSON / fionarobinson.com

Graphic Design SIMON BARBER

Front Cover

GRAYSON PERRY 'ASPECTS OF MYSELF'

See details, page 3

DEADLINE FOR EVOLVER MAGAZINE 148

March and April 2026

THURSDAY 5 FEBRUARY



EVOLVER MEDIA

8 BUCKLAND ROAD, PEN MILL TRADING ESTATE,
YEOVIL, SOMERSET BA21 5EA

Email simon@evolver.org.uk

Telephone 01935 808441

Website evolver.org.uk

Hosted by AZTEC MEDIA

Instagram [evolvermagazine](https://www.instagram.com/evolvermagazine)

Published by EVOLVER MEDIA LIMITED

Pre-Press by FLAYDEMOUSE

01935 479453 / flaydemouse.com

Printed by BISHOPS PRINTERS

bishops.co.uk

EAST QUAY



EARTHLY SPIRITS
31.01.2026 — 04.05.2026
Pinkie Maclure

@eastquaywatchet
eastquaywatchet.co.uk



Supported using public funding by
ARTS COUNCIL ENGLAND

BEAUTY IN PLAINNESS

WILLIAM SCOTT IN SOMERSET



15 November to 7 February 2026

Experience the bold, abstract works of British art icon William Scott CBE RA (1913-1989). Three major paintings from the Tate collection are on display in this exclusive Spotlight Loan exhibition.

Loans from



museumofsomerset.org.uk
Taunton Castle TA1 4AA

The MUSEUM of SOMERSET



WILTSHIRE CREATIVE

Omid Djalili: Namaste

Tuesday 27 Jan
Salisbury Playhouse

Omid delivers fearless, acclaimed comedy skewering global chaos – no tyrants spared.



Rêverie

with Lucy Parham & Sir
Simon Russell Beale

Wednesday 28 Jan
Salisbury Playhouse

Lucy Parham charts Debussy's life through his music and diaries.



Will Adamsdale: AI, AI, Oh...

Saturday 7 Feb
Salisbury Arts Centre

Will explores creativity, escape and digital dependence autobiographically.



Moscow Drug Club

Thursday 12 Feb
Salisbury Arts Centre

Experience an intimate blend of jazz, musette, Latin grooves and New Orleans swing.



Rock & Roll Man

13 Feb – 7 Mar
Salisbury Playhouse

This musical charts Alan Freed's rise and the birth of rock 'n' roll through new and familiar hits.



Book now at
wiltshirecreative.co.uk

Discover
what's on!



Dorset
Museum
& Art Gallery

THE INGRAM
COLLECTION
OF MODERN BRITISH ART

PEOPLE WATCHING

Over 100 years of
British portraiture

31 January – 10 May 2026
Dorset Museum & Art Gallery

dorsetmuseum.org