

THE **FREE** WESSEX ARTS AND CULTURE GUIDE

# **EVOLVER** magazine



November and December 2025



# EMMA TALBOT EVERYTHING IS ENERGY

## FREE EXHIBITION

18 OCTOBER 2025

8 FEBRUARY 2026

Donations welcome

11am — 6pm, Tuesday — Sunday  
16 Narrow Quay, Bristol BS1 4QA

@arnolfiniarts  
arnolfini.org.uk

# ARNOLFINI

EST. 1961



Supported using public funding by  
**ARTS COUNCIL  
ENGLAND**



## The Long Gallery 2026

A series of exhibitions celebrating 40 years of the Black Swan Arts Centre



### Impression

Frome Printmakers

10 January - 15 February  
Preview - 09 January

10 members of the Fine Art Printmaking studio Frome Printmakers will be exhibiting a variety of high quality prints that include etching, lithography and other relief processes.



### Clay Connections

40 Ceramic Objects

21 February - 29 March  
Preview - 20 February

Clay Connections brings together a diverse selection of 40 ceramic objects from nine contemporary ceramicists within the Frome area. Together, the objects explore the full spectrum of ceramics, from the everyday functional to existential questions.



### Think XL

40th Anniversary Fundraiser

04 April - 10 May  
Preview - 03 April

| Behold | Support | Acquire |  
40 works of art donated by 40 artists connected with 40 years of Black Swan Arts. View this ambitious fundraiser, become one of 40 owners and champion its future.



### Partners in Art

Frome Art Society

16 May - 21 June  
Preview - 15 May

Founded in 1979 by Charles and Vera Appleyard and their friend Charles Hopkins, the Frome Art Society has had a long and fruitful relationship with Black Swan Arts exhibiting their members' work each spring and autumn at the centre.

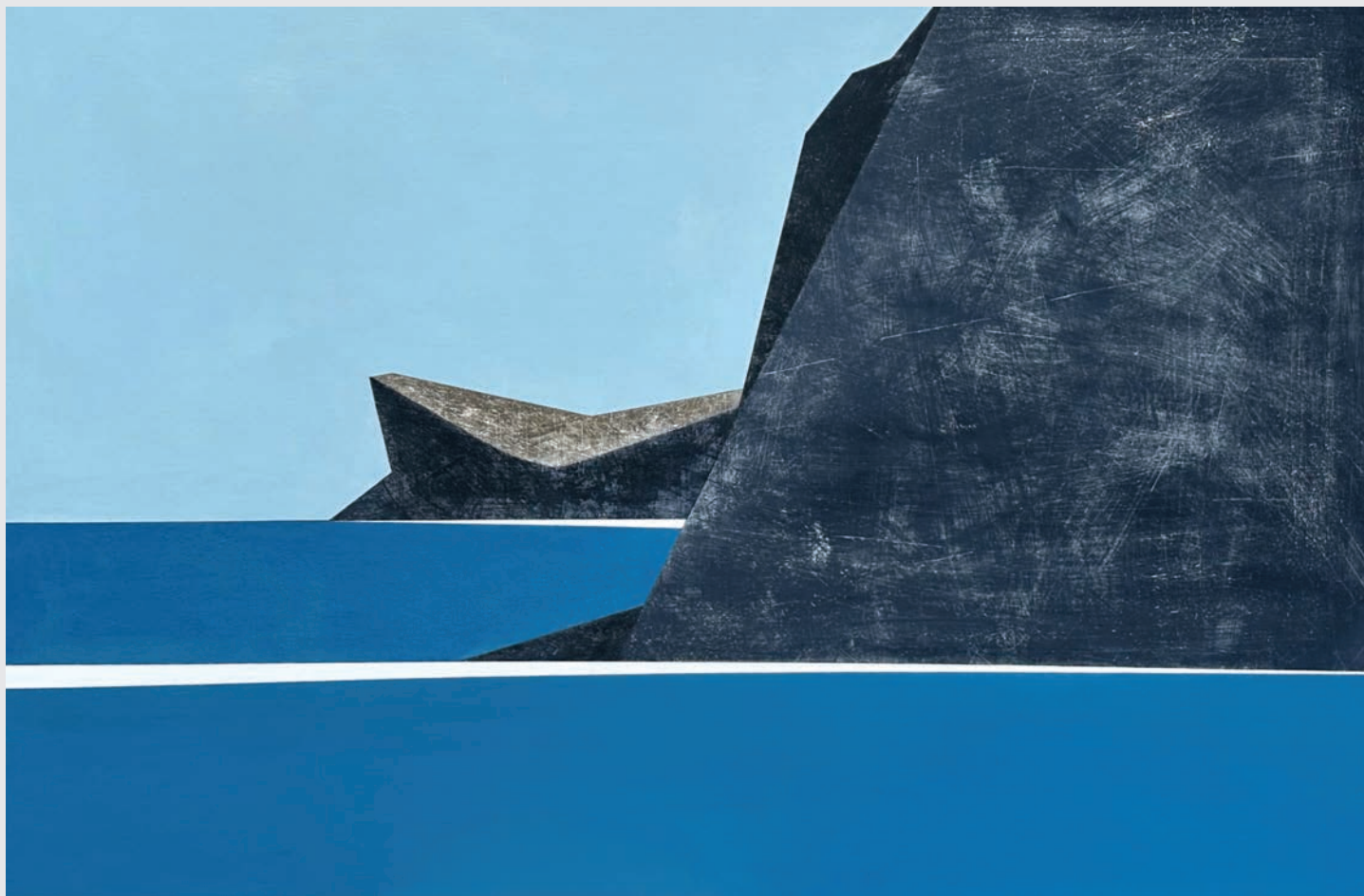
Mon - Sun 10am-4pm  
2 Bridge Street, Frome BA11 1BB  
[blackswanarts.org.uk](http://blackswanarts.org.uk)





# Exhibit A

November and December 2025



## Vanessa Gardiner: Sea Cliffs 19

*Acrylic on board, 90 x 135 cm, 2024*

ARTIST STATEMENT: "As a landscape painter I have always been drawn to the natural geometry of coastal scenery. The dramatic beauty of the north Cornish coast has long been a source of inspiration for my paintings with its grand architecture of sheer slate cliffs abutting the deep turquoise sea. *Sea Cliffs 19* was inspired by an impromptu boat trip made recently along the coast at Boscastle, a place I've known and loved since childhood. Looking back at it from the sea revealed aspects of this landscape, which I thought I knew extremely well, in a new and surprising way."

**'RADIANCE'**

**15 November - 10 January:** Sladers Yard, WEST BAY, Bridport, DT6 4EL. Wednesday - Saturday 10am - 4.30pm. 01308 459511 / [sladersyard.co.uk](http://sladersyard.co.uk).

[vanessagardiner.co.uk](http://vanessagardiner.co.uk)

Front cover: ROBERT MCPARTLAND 'SWAY' (Oil on linen, 90 x 80 cm, 2025)

RWA 172 Open Evolver Magazine Front Cover Prizewinner • Exhibition continues until 28 December (see listing, page 15) • [rwa.org.uk](http://rwa.org.uk)

# Headlines

November and December 2025



LAURA KRIEFMAN

## Present Makers 2025

This festive season treat yourself to a truly indulgent show for lovers of the unique and handmade. On Saturday 8th November Thelma Hulbert Gallery opens its doors for you to view the wealth of talent from 70 of the south west's finest designer makers.

Thelma Hulbert Gallery (THG) is an award-winning public art gallery in Honiton hosting an acclaimed programme of contemporary art and craft

exhibitions, alongside a permanent collection of artist Thelma Hulbert's work. Present Makers has been a staple of THG's exhibition calendar since 2006, and a one-stop shop for visitors looking for individual and original festive gifts. Growing in popularity year on year, the exhibition celebrates emerging artists as well as established makers in the region, encouraging visitors to shop local and support creative talent.

With record-breaking submissions for 2025, this year THG is proud to be showcasing more artists than ever before. Through an open call across the south west, applications were invited from makers working in a range of materials including glass, jewellery, ceramics, textiles, leather work, print and wood to highlight the quality, variety and dynamism of south west craft.

The exhibition spreads throughout all the galleries at THG where installation meets visual merchandising. The team are highly skilled in the art of creating small room sets and vignettes to showcase the makers' work in the best way possible.

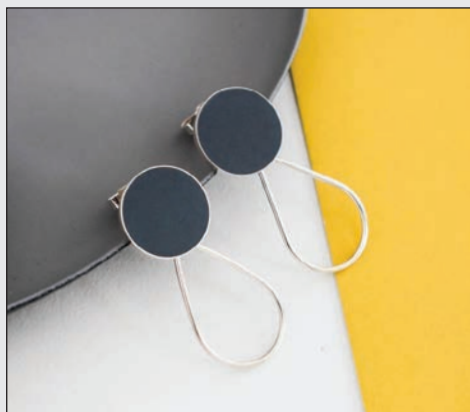
As online shopping and next-day delivery continue to dominate the consumer experience, THG brings the joy back into shopping - encouraging you to see, touch, smell and revel in your buying experience.

Many of the selected makers work to ethical processes, or with recycled or locally gathered materials, all informed and inspired by their sense of place, natural forms, local history or surrounding landscape.

THG is committed to supporting designer makers throughout the year with selling showcases in the gallery shop, championing the local artist community and celebrating the talent on our doorstep.

*Suzy Rushbrook*

**8 November - 24 December:** Thelma Hulbert Gallery, Dowell Street, HONITON, EX14 1LX. Tuesday - Saturday 10am - 5pm. 01404 45006 / [thelmahulbert.com](http://thelmahulbert.com).



CLAIRE LOWE JEWELLERY



APRIL PEBBLE GLASS



STUDIO ARVOR



Follow **evolvermagazine** on Instagram



## Headlines



DARREN APPIAGYEI 'IGNATIUS VESSEL 1'



KATE MCCGWIRE 'SEPAL SPECULUM'

## Rock Paper Scissors

Drawing inspiration from the innocence of childhood play and the universal game of the playground, the exhibition explores the elemental relationship between hand, material, and imagination. Just as the game rock, paper, scissors distills decision-making into simple gestures, the works on view embrace pared-back processes and raw materials, uncovering beauty and meaning in the handmade and the natural. Artists in the exhibition work with elemental forms and familiar

matter, stone, wood, fibre, pigment, feathers and found fragments, transforming them into new expressions of texture, balance, and touch. The title evokes a world of playfulness and tactility, reminding us of the enduring creativity sparked by simple acts and materials. By foregrounding both nature and making, *Rock Paper Scissors* celebrates the imaginative leap from playground games to artistic creation, affirming the timeless resonance of creating something from

almost nothing. The featured artists are Kate MccGwire, Ted Rogers, Susanna Bauer, Alice Freeman, Anya Paintsil, Darren Appiagyei, Hana Moazzeni, Nicholas Lees, Dean Coates, Peter Randall-Page, and Amy Stephens.

**29 November - 20 December  
+ 8 - 17 January**

Close Gallery, HATCH BEAUCHAMP, TA3 6AE. Thursday and Friday 11am - 4pm, Saturday 11am - 3pm. [closeitd.com](http://closeitd.com).



## SUBVERSIVE FORMS

revolutionary approaches to clay

**15 November - 21 February**

Free entry, Mon - Sat, 10am - 4pm



## Shepton Snowdrop Festival Photography & Poetry Competitions 2026

Three age categories with £300 prize money for the winner of each adult category.

Theme is 'in the garden'; natural or cultivated; concept or metaphor.

Professional award winning photography judge; Jason Ingram

Poetry judge; published author and poet, Wendy Pratt.

More info - follow QR code or go to:  
<https://www.sheptonsnowdrops.org.uk/competitions/>

Unleash your creative talent.

Closing dates:  
Poetry 4.1.26  
Photography 18.1.26



## Kendal Acts Up



**Ros Huxley**

"Kendal Tudge is a Jurassic Coast Bridget Jones for our times."  
*Ashley Pharoah, screenwriter*

"Entertains while being unafraid to ask serious and very topical questions about ageing."

*Vesna Goldsworthy, author of Iron Curtain*

"Bravo Ros Huxley on your wonderful and witty debut novel - a tour de force of mayhem and messy birds."

*Jessica Hepburn, author of Save Me From The Waves*



write<sup>side</sup>left



**OPEN 25**  
25 October – 24 December

Jack Hicks



Market Place, Somerton, Somerset TA11 7NB • [acearts.co.uk](http://acearts.co.uk)  
Tues 11am - 5pm, Weds - Sat 10am - 5pm • 01458 273008

## 'An Eclectic Eye'

28th November - 7th December



An Exhibition of Modern British & Contemporary Paintings, Prints, Pottery and Jewellery

Tate Gallery artists are on show, including Sandra Blow, Prunella Clough, Robyn Denny, William Gear, John Hoyland, Albert Irvin, William Tillyer, and John Wells

Contemporary Paintings by Peter Joyce and others

Studio Pottery, including Charles Bound, Mike Dodd, Janet Leach, John Maltby, Muchelney Pottery, Robin Welch

Vintage French Pottery and Jewellery

Opens Friday 28th November at 1pm  
Saturdays and Sundays 11am - 5pm. Monday - Friday 1 - 5pm

[www.timelinearts.co.uk](http://www.timelinearts.co.uk)

FurzebrookStudios, nearWareham BH20 5AX



## Headlines



### Hope Bourne

Hope Bourne (1918 - 2010) was a writer and artist who spent almost sixty years recording the landscape, wildlife, history and changing rural traditions of Exmoor. Fiercely creative and resolutely independent, she led a self-reliant life that gave her the freedom to write, draw and paint.

A new exhibition at Glastonbury's Somerset Rural Life Museum this Autumn considers Bourne's status as one of the West Country's most significant nature writers, whose work and way of life are especially prescient in this time of advancing environmental crisis.

It draws on new research by writer and Guardian Country Diarist Sara Hudston, whose book *A Life Outside: Hope Bourne on Exmoor* will be published next year. Sara is co-curating the exhibition with Kate Best, for the South West Heritage Trust.

#### HOPE BOURNE: 'A LIFE OUTSIDE' Until 10 January

Somerset Rural Life Museum, Chilkwell Street, GLASTONBURY, BA6 8DB.  
Tuesday - Saturday 10am - 5pm. £10 / £8 / £4.75. 01458 831197 / srlm.org.uk.



### Shock Horror

A nightmare is about to break free at Lighthouse Poole as Thunder Road Theatre visit with their touring production of *Shock Horror*.

With a blend of live performance and illusion and film, the show is set in an abandoned cinema - the Metropol - making it the perfect treat for fans of classic horror films such as *Nightmare on Elm Street*, *Poltergeist* and *The Shining*..

The story follows Herbert, who grew up in the Metropol. The eerie old cinema was his playground and prison - a place where endless late-night horror films were his only window to the world. Forbidden from leaving by his disturbed parents, Herbert hid in its shadows and gorged on its movies.

But what lurked in the Metropol's darkness? And how did he manage to escape?

Now Herbert's back at the abandoned cinema, searching for answers to long-buried questions. But for him, the real horror has only just begun...

**5 November:** Lighthouse, 21 Kingland Road, POOLE, BH15 1UG. 7.45pm. 01202 280000 / lighthousepoole.co.uk.

## Diary Dates



'MURDER AT MIDNIGHT'

#### BSO: 'NEW YEAR'S VIENNESE GALA'

**1 January**  
lighthousepoole.co.uk

**'PEOPLE WATCHING'**  
**31 January - 10 May**  
dorsetmuseum.org

**DANIEL LEBHARDT**  
**13 and 14 February**  
concertsinthewest.org

**'MURDER AT MIDNIGHT'**  
**9 - 14 March**  
wiltshirecreative.co.uk

**PHIL BEER**  
**15 January**  
dorchesterarts.org.uk

**GEIRTHURDUR GUDMUNDSDOTTIR  
AND ANTOINE PRÉAT**  
**13 and 14 March**  
concertsinthewest.org

**DORSET ART WEEKS 2026**  
**23 May - 7 June**  
dorsetvisualarts.org

**PURBECK ART WEEKS 2026**  
**23 May - 7 June**  
purbeckartweeksfestival.co.uk

**SOMERSET ART WEEKS 2026**  
**19 September - 4 October**  
somersetartworks.org.uk



JONATHAN KEEP 'SEED MORPHOLOGY' (2025)



CLAIRE CURNEEN 'PILGRIM' (2021)

## Subversive Forms

Featuring artworks by some of the leading sculptors and innovators working with ceramics in the UK today, *Subversive Forms* shines a spotlight on contemporary artists who push the boundaries of possibility with clay.

Each selected artist disrupts and manipulates traditional ceramic perception, creating enigmatic artworks which challenge the preconceived understanding of contemporary ceramic practice.

The exhibition is a celebration of the dichotomy between the making process and the final fired ceramic form. The works included highlight clay's ability to serve artists as a material demanding precisely executed control and as a medium for communicating gestural emotional responses.

The works included lead the visitor on a journey between carved naked stoneware to highly glazed porcelain, between pops of incredible colour, to works of mixed media.

The unifying link between all exhibiting artists is their ability to work beyond the constraints of expectation, with incredible

individual approaches pushing the medium beyond the functional, using clay as a non-apologetic material for sculpture.

Drawing upon Chippenham Museum's Modern and Contemporary Art Collection, Melissa Barnett, Head of Services at Chippenham Museum, says: "This exhibition of astonishing ceramic sculpture allows the museum to continue welcoming visitors to view pieces held in our Modern and Contemporary Art Collection and creates further



NICHOLAS LEES 'SOLARIS' (2003)

understandings of the significance of the work we hold on both a local and national level."

Exhibition curator Sarah Purvey explains: "This fascinating exhibition of fired clay artworks further expands the dialogue between ceramic expectation and contemporary ceramic practice. Each of the exhibiting artists subverts the traditionally understood rules regarding ceramic process and pushes forward with groundbreaking technique and masterly understanding of the medium."

The featured artists in *Subversive Forms* include Dan Allen, Felicity Aylieff, Kelly Allsopp, Halima Cassell, Matthew Chambers, Claire Curneen, Richard Deacon, Laura Ford, Keith Harrison, Mimi Joung, Jonathan Keep, Nicholas Lees, Claire Loder, Sam Lucas, Peter Randall Page, Sarah Purvey, Matt Smith, Jo Taylor, Annie Turner, Patricia Volk, and Maria Wodjat.

**14 November - 21 February:**

Chippenham Museum, CHIPPENHAM,  
Monday - Saturday 10am - 4pm.  
[chippenham.gov.uk/chippenham-museum](http://chippenham.gov.uk/chippenham-museum).



Follow **evolvermagazine** on Instagram



# Visual Arts

## 'WE RISE'

**Until 1 November**

Lighthouse, 21 Kingland Road,  
POOLE, BH15 1UG. Monday 10am -  
5pm, Tuesday - Sunday 10am - 8pm.  
01202 280000. "Vibrant exhibition  
showcasing the work of global  
majority artists in Dorset and invited  
guests."

## JINDRA JEHU: 'PRECARIOUS BODIES'

**Until 1 November**

Mowlem Theatre, Shore Road,  
SWANAGE, BH19 1DD. Monday,  
Wednesday, Friday and Saturday  
11am - 1.30pm, Monday - Saturday 6  
- 9.30pm. themowlem.com.



## 'BETWEEN THE LINES OF MODERNISM'

**Until 1 November**

David Simon Contemporary, 37 High  
Street, CASTLE CARY, BA7 7AW.  
Monday - Saturday 10am - 5.30pm.  
01963 359102 /  
davidsimoncontemporary.com.  
"Paintings and prints by William  
Gear, Lynn Chadwick, Terry Frost,  
Patrick Heron, Fernand Léger, and  
Eduardo Paolozzi, alongside  
contemporary paintings by Heath  
Hearn."

Above: William Gear 'Blue Trellis'  
(Gouache on paper, 60 x 80 cm)

## BROADSTONE ART SOCIETY ART FAIR

**Until 2 November**

The Youth Centre, Moor Road,  
BROADSTONE, BH18 8BB. 10am -  
4pm. 07831 613185.

## SHORELINE CREATIVES

**Until 2 November**

St John's Church Hall, Queens Road,  
CLEVEDON, BS21 7TH. Friday -  
Sunday 10am - 4pm. 07758 647573.



WYNONA LEGG 'SOCIAL GATHERING' (Ink)

## In The Field: Africa

"This exhibition at Bristol's contemporary wildlife gallery, Trymwood Studios, is a real treat for the winter season. From elephants to zebras, from meerkats to warthogs, this exciting exhibition will celebrate some of the extraordinary fauna of the African continent through drawing, painting, original print and sculpture. This showcase is also an exciting celebration of a unique fieldwork methodology when making art. Devoting themselves to sustained periods of time observing African animals, 'in the field', the artists in this exhibition dedicate their full energies to understanding their subject - a most demanding way of practising their craft. This integrity visibly translates into beautiful artworks that captivate and excite. The exhibition will include artwork by John Dobbs, Polly Hosp, Wynona Legg, Nick Mackman, Greg Poole, Dafila Scott and John Threlfall, artists as passionate about their mediums as the wonderful subject matter they explore."

**14 - 30 November:** Trymwood Studios, Trym Road, WESTBURY-ON-TRYM, Bristol, BS9 3ET. Friday - Sunday 11am - 4pm. trymwoodstudios.co.uk.



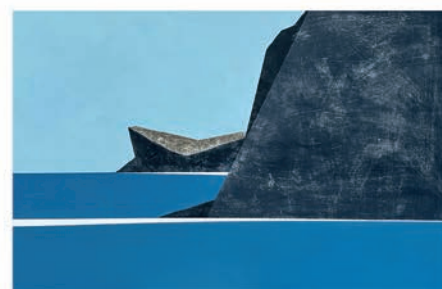
Marzia Colonna MRBS  
Flying over the Rocks  
collage 100 x 122cm framed

As Dreams are Made on  
MARZIA COLONNA MRBS collages  
FIAMMA COLONNA MONTAGU  
ceramic sculpture continues until 8 November.

RADIANCE from Saturday, 15 November  
paintings, prints, ceramics, furniture & more...  
Louise Balaam, Martyn Brewster, Vanessa  
Gardiner, Howard Phipps, Alfred Stockham.  
Derek Matthews, Emily Myers, Lise Herud  
Braten ceramics. Petter Southall furniture.

## SLADERS YARD

Contemporary Art & Craft Gallery West Bay DT6 4EL  
@sladersyard 01308 459511 Open Weds - Sat 10am - 4pm  
View all work online at [sladersyard.co.uk](http://sladersyard.co.uk)



Vanessa Gardiner  
Sea Cliffs 19 2024  
acrylic on board 90 x 135cm

## CAFÉ SLADERS

Wednesday - Saturday Lunch / Saturday Supper  
Local ingredients cooked to perfection!



# Walford Mill Crafts

## The creative home for designer makers in Dorset



Come and visit Walford Mill Crafts and you'll find inspiring exhibitions, pop-ups for up and coming makers along with our creative on-site makers in their open studios.

Book the kids on a children's art class or treat yourself to a creative workshop. We also hold Courtyard Craft Markets every second Saturday in the month starting from March.

Don't forget to enjoy a delicious lunch at the Little Pickle Cafe while you visit.

[www.walfordmillcrafts.co.uk](http://www.walfordmillcrafts.co.uk)

Knobcrook Road, Wimborne BH21 1NL - Registered Charity No. 1049540

Affordable studio spaces available, contact: [admin@walfordmillcrafts.co.uk](mailto:admin@walfordmillcrafts.co.uk)



## Come and join our friendly Art Community in Sherborne

- EXPERIENCED TUTORS
- INSPIRING STUDIOS, WELCOMING ENVIRONMENT
- VARIED WORKSHOPS / PART-TIME COURSES FROM HALF DAY TO 34 WEEKS
- ALL ABILITIES WELCOME
- CITY & GUILDS LEVEL 2 QUALIFICATIONS IN ART & DESIGN, TEXTILES, INTERIOR DESIGN
- DROP-IN SESSIONS



For more information, please give us a call, pop in and see us, email or visit our website.

07549 357138 / 07917 190309

[southwestartcourses.co.uk](http://southwestartcourses.co.uk)

Email [admin@southwestartcourses.co.uk](mailto:admin@southwestartcourses.co.uk)

Compton Studios, Compton Court  
Coldharbour, Sherborne, DT9 4AG



# HEART OF THE TRIBE ART GALLERY

Please scan the QR code to visit our website and learn more about our gallery, events & exhibitions



74 High Street  
Glastonbury  
BA6 9DZ  
[Heartofthetribe.com](http://Heartofthetribe.com)  
01458 780046



# WINTER OPEN

24TH OCTOBER -  
23RD DECEMBER

DISCOVER NEW ART TO LOVE IN OUR ANNUAL WINTER OPEN EXHIBITION. FRESH FACES AND OLD FAVOURITES - WITH OVER 40 DIFFERENT ARTISTS TAKING PART, WE'D LIKE TO THINK THERE IS SOMETHING FOR EVERYONE.



6TH-25TH NOVEMBER  
IN OUR COMMUNITY HUB

**SKATEBOARD  
EXHIBITION**



RAISING MONEY FOR WELLS SKATEPARK

Explore our latest art exhibition, experience our award-winning garden and enjoy complimentary hot drinks.



# Visual Arts

## 'VESSELS'

**Until 2 November**

Sandy Hill Arts, Sandy Hill Lane, CORFE CASTLE, BH20 5JF. 10am - 4pm. 07779 868499. "Richard Jeffery and Jayne Cunliffe come together to show their new ceramics."

## ANDREA JENKINS

**Until 2 November**

The Duchess of Cornwall, 12 Queen Mother Square, POUNDBURY, Dorchester, DT1 3DD. Monday - Saturday 9am - 11pm, Sunday 9am - 10pm. artattheduchess.com.

"Vibrant abstract art."

## 'ENJOY YOURSELF'

**Until 2 November**

Arnolfini, 16 Narrow Quay, BRISTOL, BS1 4QA. Tuesday - Sunday 11am - 6pm. Free entry. arnolfini.org.uk.

"This exhibition weaves together past and present through archive materials that highlight innovative and experimental art education."

## ROBIN TANNER

**Until 3 January**

Young Gallery, Salisbury Library, Market Walk, SALISBURY, SP1 1BL. 10am - 5pm. 07469 918319 / younggalleriesalisbury.org.uk.

"This exhibition celebrates Robin Tanner's botanical studies. Explore the diverse flora of Wiltshire and Tanner's creative process."

## 'POOLE'

**Until 3 November**

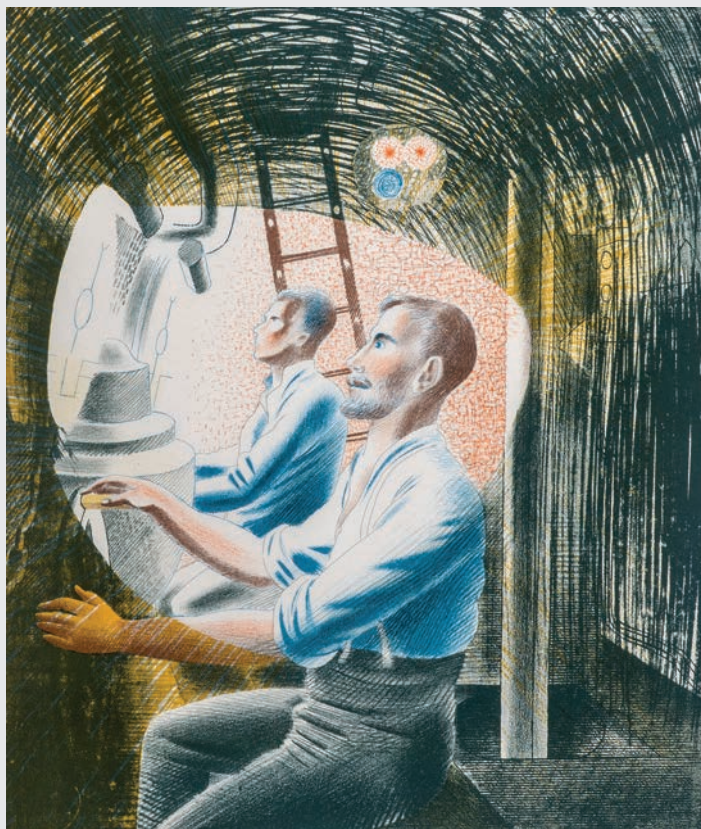
The Gallery Upstairs, Upton Country Park, POOLE, BH17 7BJ. 10am - 4.30pm. thegalleryupstairs.org.uk / pedas.org.uk. "Paintings that capture the essence of the town and its environs, its history and people."

## NAOMI JOY: 'LOVE THE UNLOVED'

**Until 3 November**

The Pound Arts Centre, Pound Pill, CORSHAM, SN13 9HX. Monday - Saturday 10am - 9.30pm. 01249 701628 / poundarts.org.uk.

"Discover overlooked local wildlife through eco-artist Naomi Joy's work, celebrating threatened species like Bechstein's bats, woodlice, and pigeons, revealing Wiltshire's hidden beauty and inspiring protection through fresh perspectives."



ERIC RAVILIOUS 'DIVING CONTROLS 2'

## Artist as Witness: The Impact of War

"This powerful exhibition highlights artists as eyewitnesses, revealing war's impact through works from both World Wars, and George Butler's recent depictions of the Ukraine conflict and its lasting effects."

**Until 8 March:** Russell-Cotes Art Gallery & Museum, BOURNEMOUTH, BH1 3AA. 10am - 5pm. £9.50 / £5. 01202 128000 / russellcotes.com.

## PHOEBE RIDGWAY: 'HOT BREATH UNDER TARP'

**Until 4 November**

The Gallery, Shaftesbury Arts Centre, Bell Street, SHAFTESBURY, SP7 8AR. Monday - Saturday 10am - 4pm. shaftesburyartscentre.org.uk.

## 'EVER PRESENT'

**Until 5 November**

Malthouse Gallery, Town Mill Courtyard, Mill Lane, LYME REGIS, DT7 3PU. 10am - 5pm. 07811 102216 / alisonsheltonbrown.art. "High quality artworks and handmade items."

## SECRET POSTCARD AUCTION 2025

**Until 6 November**

RWA, Queen's Road, Clifton, BRISTOL, BS8 1PX. Tuesday - Sunday 10am - 5pm. rwa.org.uk.

## 'AS DREAMS ARE MADE ON'

**Until 8 November**

Sladers Yard, West Bay Road, WEST BAY, Bridport, DT6 4EL. Wednesday - Saturday 10am - 4pm. 01308 459511 / sladersyard.co.uk. "Marzia Colonna and Fiamma Colonna Montagu exhibit their harmonious and yet utterly individual and irresistible collages and sculptures."

## SOUTH WEST ACADEMY OPEN

**Until 8 November**

Kennaway House, Coburg Road, SIDMOUTH, EX10 8NG. 10.30am - 4.30pm. 01395 515551 / southwestacademy.org.uk. "The South West Academy's 26th Open exhibition showcases work from national and international artists. Work includes painting, drawing, print, sculpture, photography, textiles, multi-media, and ceramics."



## CLAIRE THOMAS: 'THE LONG END OF SUMMER'

**Until 9 November**

Walford Mill, Knobcrook Road, WIMBORNE, BH21 1NL. Wednesday 11am - 4pm. walfordmillcrafts.co.uk. "Claire Thomas is inspired by the landscape of the Cranborne Chase and Blackmore Vale. These new works are deep rooted and capture a love of this beautiful countryside, revealing its agricultural heritage, its history and above all the tranquility and contentment found there."



## Exhibit A

Artists and photographers are invited to submit work for next issue's page 3 Exhibit A by emailing images to: simon@evolver.org.uk



Artwork: Greg Poole, Leopard and Carmine Bee-eaters

## In the field: Africa

TRYMWOOD STUDIOS

Paintings, Drawings, Sculpture & Original Prints

14th - 30th Nov 2025

Friday - Sunday

11am - 4pm

ttrymwoodstudios.co.uk  
Bristol UK @ttrymwoodstudios

HERITAGE  
COURTYARD  
GALLERY AND  
STUDIOS



## CREATIVE WORKSHOPS



scan the code to  
discover our current  
workshops, classes  
and art activities

www.heritagecourtyardstudio.com  
8 heritage Courtyard  
Sadler Street Wells BA5 2RR





HELEN GARRETT 'THE MESSENGER' (Oil on linen, 60 x 70 cm, 2025)

## Primordial Dance

"Helen Garrett creates beautiful, profound paintings exploring the depth of time and its spiral motion. Her visual art practice is a process of revealing the elemental forces and stories embedded in physical and metaphysical worlds. She is particularly interested in the link between ancient times and the present through material and place - both in the UK and in the Aegean. Paintings that touch the edge of philosophy, archaeology and physics. The work becomes a vehicle for contemplation as we reflect on the human experience - each work a unique exploration into the ever-transforming context in which we find ourselves. Kate Innes's work in poetry and fiction is inspired by her background working in archaeology and museums. She seeks out the stories held within places and objects - interrogating the essential in the physical and spiritual life of our ancestors. As part of this creative collaboration with Helen, Kate has written over twenty poems now collected in her new volume *The Matter*, focusing on the materials used by artists in the ancient past, as well as the materials of oil painting and printing today."

**29 November - 20 December:** Bridport Arts Centre, 9 South Street, BRIDPORT, DT6 3NR. Tuesday - Saturday 10am - 4pm. 01308 424204 / [bridport-arts.com](http://bridport-arts.com).

### 'LAYERS'

**Until 9 November**

Sou'-Sou'-West Gallery, Manor Yard, Symondsbury Estate, SYMONDSBURY, Bridport, DT6 6HG. 10.30am - 3.30pm. 01308 301326.

"Steve Manning, Mark Fielding and Charlie Salaman explore meaning through layers in their reduction linoprints, paintings and ceramics."

### 'SELECTED'

**Until 9 November**

Sou'-Sou'-West Gallery, Manor Yard, Symondsbury Estate, SYMONDSBURY, Bridport, DT6 6HG. 10.30am - 3.30pm. 01308 301326.

### LOUISE LUTON: 'WILD WORLD'

**Until 15 November**

Fisherton Mill, 108 Fisherton Street, SALISBURY, SP2 7QY. Monday - Saturday 9.30am - 5pm. 01722 500200 / [fishertonmill.co.uk](http://fishertonmill.co.uk).



### JONNY HANNAH: 'THE DARKTOWN DEPARTMENT STORE'

**Until 15 November**

The Slade Centre, GILLINGHAM, SP8 4AY. Tuesday - Friday 9.30am - 4pm, Saturday 9.30am - 2pm.

[thesladecentre.co.uk](http://thesladecentre.co.uk). "With a wide range of objects, drawing, prints and even clothes Jonny has immersed himself into the history of the building and is converting it into something exciting, accessible and relevant. A dynamic, fun, respectful nod to our history delivered in a quirky, contemporary style."

## Nights drawing in? We're not.

Weather-beaten members of Bournemouth Arts Club may be found drawing and painting *en plein air* throughout the year.

Or they may be enjoying our workshops, gallery visits and artists' studio talks - open to all Members and Associates every month.

It's a tough job maintaining standards as the region's oldest and most respected arts club, but someone's got to do it. Find out more.

Tina Peacock 'Finding my way home II' (acrylics and cold wax medium on wood)



[bournemouthartsclub.co.uk](http://bournemouthartsclub.co.uk)

BOURNEMOUTH  
**ARTS**  
CLUB





## EAST QUAY

**DOWN THE HATCH**  
13.09.2025 - 11.01.2026  
Jo Lathwood

@eastquaywatchet  
eastquaywatchet.co.uk  
Open daily 10am-5pm



Supported using public funding by  
**ARTS COUNCIL ENGLAND**



**REGISTER FOR DORSET ART WEEKS 2026**

Open to all Dorset artists, designers, makers, curators and galleries.

**Registration opens**  
**3 November - 10 December 2025**

Visit [dorsetartweeks.co.uk](https://dorsetartweeks.co.uk) for information

**DORSET ART WEEKS**  
**23 MAY - 7 JUNE 2026**



East Harptree

# BIG ARTS WEEKEND

**8th-9th Nov 2025**  
10 am to 4.30 pm

**East Harptree Theatre & Arts Hub**

**ART EXHIBITION**  
**MEET THE ARTISTS**  
**WORKSHOPS**  
**TEA, COFFEE & CAKE**

**Featuring Work by**  
Ali Brown • John Darvill • Kevin Hemmings  
Chris and Jackie Head (Potts Cottage Collective)  
Cheryl Herrington • Amy Hutchings  
Vickie Isaac • Pauline Palmer • Emma Powell  
Mary Liddell • Patrick Barker  
and other visiting artists

Visit [artshubharptree.com](https://artshubharptree.com) for more details




# Landscape Open 2025

The selected finalists - celebrating the evolving relationship between landscape and art



*The Golden River © Sara Olier Brome*

**18 October 2025 to**  
**25 January 2026**

**PH AO**

The Salisbury Museum is a registered charity, no. 289850

**The SALISBURY MUSEUM**

[www.salisburymuseum.org.uk](https://www.salisburymuseum.org.uk)



Unit 4&6 Manor Yard  
Symondsburry Estate  
Bridport DT6 6HG

**11 Oct - 09 Nov**  
**Selected**

**18 Oct - 09 Nov**  
**Layers**

Steve Manning, Mark Fielding  
& Charlie Salaman

**14 Nov - 02 Dec**  
**Winter Open**

## Call For Entries


**05 Dec - 04 Jan**  
**Gifted Art Fair**

Selling Opportunities  
Available, see website

**Space available for 26/27!**  
**Solo shows, group exhibitions,**  
**workshops & demos welcome**  
**Contact us for more:**  
**hello@sousouwest.co.uk**

**Free parking • Cafe  
Walking • Shopping**

**Daily: 10:30 - 15:30**

 [sousouwestgallery](#)

**sousouwest.co.uk**



## Winter Market

An array of gifts from curated makers

## Preview

21 November 6 - 8 pm

Open

21 November - 28 December 2025

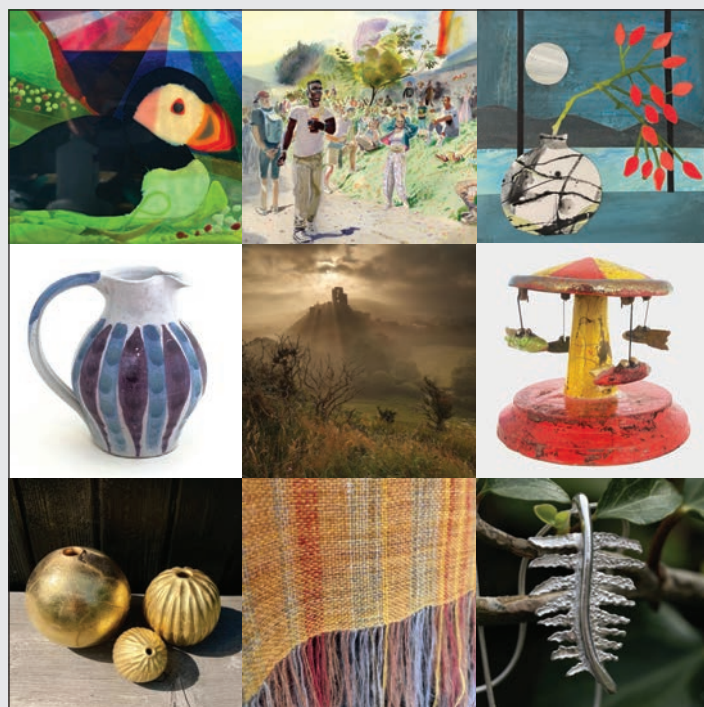
## Long Gallery

Mon - Sun 10am - 4pm

2 Bridge Street,

Frome BA11 1BB

[blackswanarts.org.uk](http://blackswanarts.org.uk)



## BOILERHOUSE GALLERY

## Contemporary Art and Craft in the heart of Purbeck

Open Wednesday to Sunday 11am - 4pm

## WINTER WASSAIL

SATURDAY 13 DECEMBER, 12noon - 4pm

**Sandy Hill Lane, Corfe Castle BH20 5JF**

07398 052489 • [boilerhousegallery.co.uk](http://boilerhousegallery.co.uk)

**EVOLVER**  
magazine

**SUBSCRIBE NOW!** 6 issues for £30



# Visual Arts

## 'FROM AND TO'

**Until 15 November**

Bridport Arts Centre, 9 South Street, BRIDPORT, DT6 3NR. Tuesday - Saturday 10am - 4pm. 01308 424204. "Exhibition by Laura Eldret and the people of West Dorset."

## 'PASSING THROUGH'

**Until 16 November**

Studio 10 Project Space, East Quay, Harbour Road, WATCHET, TA23 0AQ. 10am - 5pm. 01984 263103. "North Devon and West Somerset artists explore what it means to live on the cusp of a place."

## 'UNSEEN'

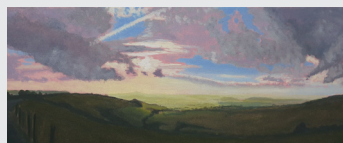
**Until 12 December**

The Old School House, Gladstone Mews, BOSCOMBE, BH7 6BG. Thursday and Friday 2 - 5pm. 07951 402737 / toshspace.co.uk.

## ACE ARTS OPEN 25

**Until 24 December**

ACE Arts, The Old Town Hall, Market Place, SOMERTON, TA11 7NB. Tuesday 11am - 5pm, Wednesday - Saturday 10am - 5pm. acearts.co.uk. "This exhibition showcases a diverse array of mediums including painting, sculpture, drawing, textiles, mixed media, and photography."



## KIT GLAISYER: 'DREAMS OF LIGHT'

**Until 24 December**

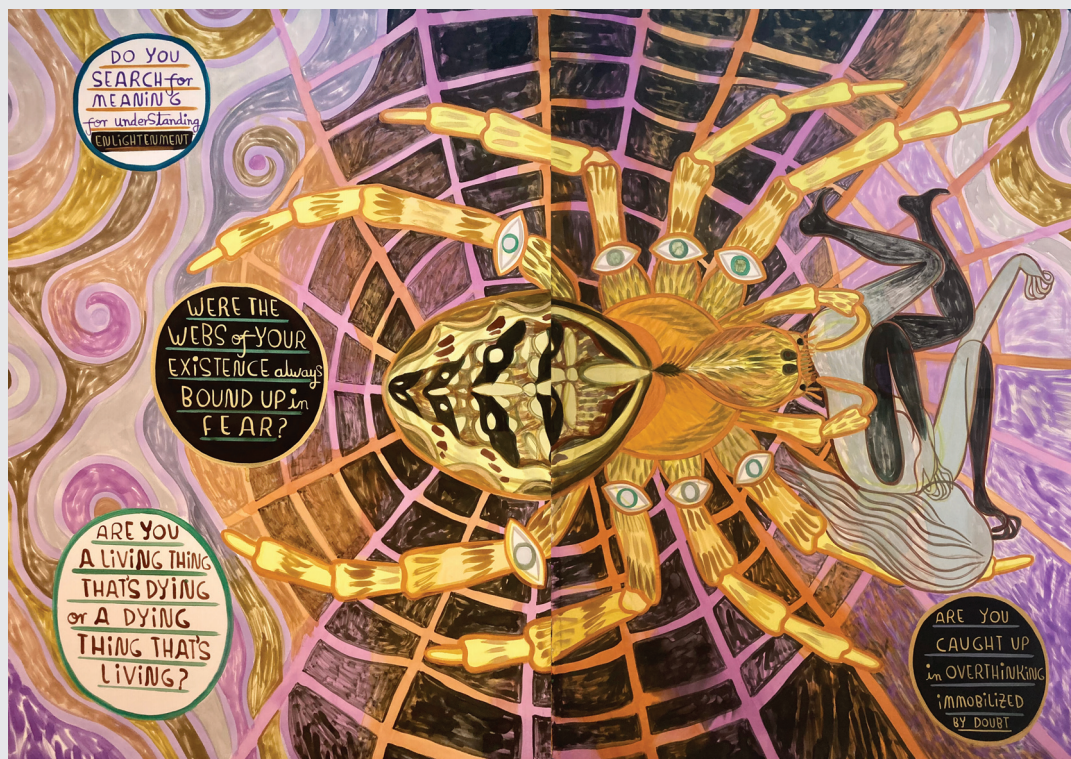
Bridport Contemporary, 11 Downes Street, BRIDPORT, DT6 3JR. Saturday 10am - 3pm. kitglaisyer.com.

"Exhibition of small oil paintings inspired by the expressive sketches of John Constable and JMW Turner, adding a contemporary twist." Above: 'Eggardon Glow' (Oil on canvas, 20 x 51 cm)

## 172 ANNUAL OPEN EXHIBITION

**Until 28 December**

RWA, Queen's Road, Clifton, BRISTOL, BS8 1PX. Tuesday - Sunday 10am - 5pm. £9.90 / £5.45. 0117 973 5129 / rwa.org.uk.



'ARE YOU A LIVING THING THAT IS DYING OR A DYING THING THAT IS LIVING?' (2025)

## Emma Talbot: Everything is Energy

"What is life?" is just one of many gently probing questions addressed by British artist Emma Talbot in her solo exhibition *Everything is Energy*, in which the artist leads us through a rich eco-system of works - including silk painting installations, intimate drawings, sculptural forms and animation - each exploring the complexity of our relationship with nature, technology and the world around us. *Everything is Energy* invites us to slow down, question and reconnect, asking us 'What can you gather before you retreat?'"

**Until 8 February:** Arnolfini, 16 Narrow Quay, BRISTOL, BS1 4QA. Tuesday - Sunday 11am - 6pm. Free entry (£5 suggested donation). 0117 917 2300 / arnolfini.org.uk.

## 'A WINTER'S EMBRACE'

**Until 31 December**

Studio 3 Gallery, Moor Lane, CLEVEDON, BS21 6TD. 10am - 4pm. 07557 331967 / studiothree.art.

## 'AUTUMN 2025'

**Until 4 January**

Tincleton Gallery, The Old School House, TINCLETON, near Dorchester, DT2 8QR. Saturday and Sunday 10am - 4pm. 01305 848909.

## QUENTIN BLAKE: 'OUR FRIENDS IN THE COUNTRY'

**Until 4 January**

The Sherborne, Newland, SHERBORNE, DT9 3JG. 10am - 5pm. "With watercolour washes and ink lines, 12 scenes of rural life focus on the animals and people that reside in the countryside, and the bonds that exist between the unlikely pairings. These recent works showcase the quiet comedy and fulfilling

friendships between rural dwellers, and inhibit the movement, tenderness and emotion that is the trademark of his drawings."

## HOPE BOURNE: 'A LIFE OUTSIDE'

**Until 10 January**

Somerset Rural Life Museum, Chilkwell Street, GLASTONBURY, BA6 8DB. Tuesday - Saturday 10am - 5pm. £10 / £8 / £4.75. 01458 831197 / srlm.org.uk. See page 7.

## WINTER PROGRAMME

creative workshops  
social events  
gallery shop  
exhibitions  
warm hub  
& more...

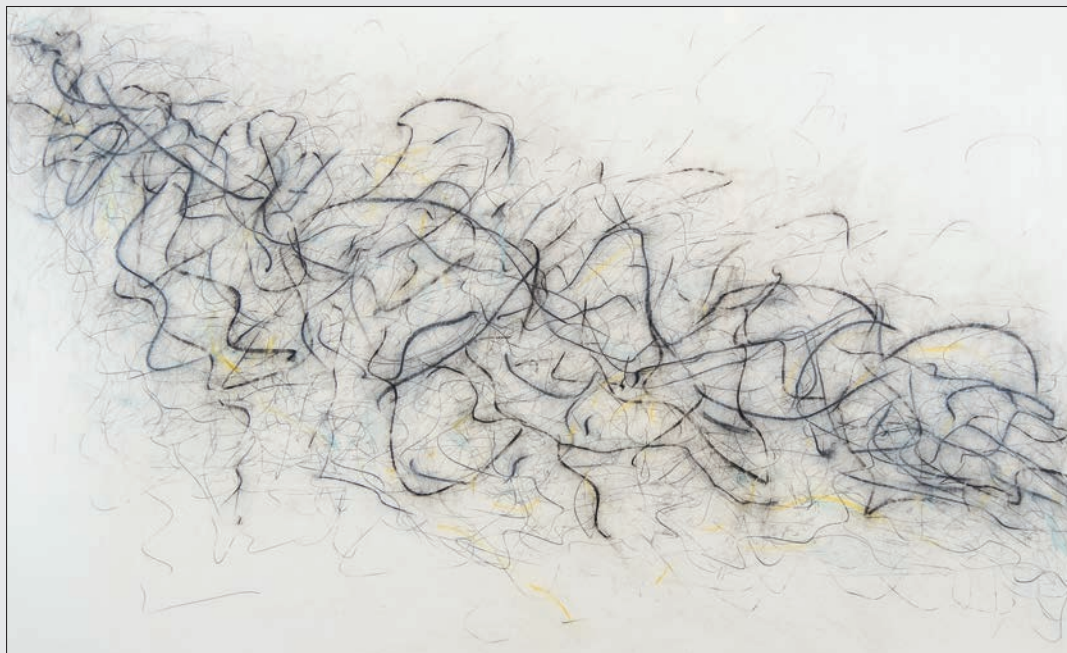


## YEOVIL ART SPACE

Opening Times  
Wed, Thu, Fri 12-4  
Sat 11-4

info@yeovilartspace.uk  
yeovilartspace.uk





'LA MER, DEBUSSY' (Graphite charcoal and mixed media, 80 x 120,cm, 2016)

## Fiona Robinson: Drawing Music

"This small survey show includes works from across fifteen years of Fiona Robinson's drawing practice. Her work is a response to music by composers as diverse as J.S. Bach, Chopin, Debussy, John Cage, Steve Reich and Max Richter. It starts with falling in love with a particular piece of music, then total immersion - listening, learning to play piano pieces and then making endless drawings and studies in sketchbooks. Works included here range from Chopin's *Nocturne Opus 9 No. 1, La Mer* by Debussy (an orchestral piece), and drawings from her most recent project Max Richter's music for the ballet *Wolf Works* which is based on the life and novels of Virginia Woolf. One of the drawings from the *Wolf Works* series has been shortlisted for the 2025 Trinity Buoy Wharf Drawing Prize. Fiona Robinson is an artist writer and curator. She was elected President of the Royal West of England Academy in 2019. Her works are held in the British Museum, The Fitzwilliam Museum Cambridge, the Royal West of England Academy Bristol, Swindon Museum and public collections in Australia and the Republic of Ireland."

**6 November - 3 January:** Mowlem Theatre, Shore Road, SWANAGE, BH19 1DD. Monday, Wednesday, Friday and Saturday 11am - 1.30pm, Monday - Saturday 6 - 9.30pm. 01929 422239 / themowlem.com / fionarobinson.com.

### JO LATHWOOD: 'DOWN THE HATCH'

**Until 11 January**

Galleries 1 and 2, East Quay, Harbour Road, WATCHET, TA23 0AQ. 10am - 5pm. 01984 263103 / eastquaywatchet.co.uk.

### 'DOWNLAND'

**Until 24 January**

Wiltshire Museum, 41 Long Street, DEVIZES, SN10 1NS. Monday and Tuesday 10am - 5pm, Thursday - Saturday 10am - 5pm. 01380 727369 / wiltshiremuseum.org.uk.

### 'WILDLIFE PHOTOGRAPHER OF THE YEAR 2025'

**Until 26 April**

Bristol Museum & Art Gallery, Queens Road, BRISTOL, BS8 1RL. 10am - 5pm. bristolmuseums.org.uk. "100 awe-inspiring images."

### BULL MILL STUDIO 'FIRST SATURDAY'

**1 November**

Bull Mill Studio, Bull Lane, CROCKERTON, Warminster, BA12 8AY. 10am - 5pm. 07730 400784 / nickandrew.co.uk. "Open studio exhibition featuring contemporary landscape painting and drawing projects by Nick Andrew, wildlife art on reclaimed wood by Tanya Hinton, and jewellery by Stephanie Gilbert."

### WINSHAM ART GROUP

**1 and 2 November**

The Jubilee Hall, WINSHAM, TA20 4HU. Saturday and Sunday 10am - 4pm. 01460 30441. "Step into a world of colour, texture, and expression."

### DONNA GOOLD: 'LONDON BRIDGES'

**1 - 29 November**

Artwave West, MORCOMBELAKE, DT6 6DY. Wednesday - Saturday 10am - 5pm. 07792 279886 / artwavewest.com. "Donna Goold's new paintings of London bridges merge sweeping architectural forms with luminous colour. Bold, atmospheric, contemplative."

### 'MEMENTO MORI'

**1 - 30 November**

Andelli Art, Mendip House, Upper Breach, SOUTH HERRINGTON, Wells, BA5 3QG. Wednesday - Saturday 10am - 5pm. andelliart.com.

### IAN HEDLEY

**3 - 16 November**

The Duchess of Cornwall, 12 Queen Mother Square, POUNDBURY, Dorchester, DT1 3DD. Monday - Saturday 9am - 11pm, Sunday 9am - 10pm. artattheduchess.com. "Graphite pencil portraits and seascapes."

### TINA PEACOCK: 'BEYOND THE EDGE'

**4 - 8 November**

Upstairs Studio, Sturminster Marshall Golf Club, Moor Lane, STURMINSTER MARSHALL, near Wimborne, BH21 4BD. 10am - 3pm. tinapeacockart.co.uk. "Open studio."



Marina Morris



Sarah du Feu

Wide range of frames and expert, friendly advice

Giclée prints from original art or photographs

Original art from local and national artists

**1 Lynden Way, Beaminster, DT8 3AX**

Tel: 01308 800693

**Unit 3, 20 Market Street, Crewkerne, TA18 7LA**

Tel: 01460 497589

email info@artandbeyond.co.uk



Ceramics by Richard Longden, Stephanie Carlton, Tone von Krogh, Babs Kirby





# A Life Outside Hope Bourne on Exmoor

27 SEPT 2025 - 10 JAN 2026

An exhibition exploring the art and life of nature writer and artist Hope Bourne (1918-2010)

Drawing on new research by Sara Hudston, whose book *A Life Outside: Hope Bourne on Exmoor* will be published next year.

**SRLM**  
SOMERSET RURAL LIFE MUSEUM

SRLM.ORG.UK  
GLASTONBURY BA6 8DB



SW  
SOUTH WEST  
HERITAGE TRUST



**Athelhampton**  
HOUSE & GARDENS



## Gordon Rushmer at Athelhampton EVERY PICTURE TELLS A STORY

An exhibition of paintings and watercolours in the East-Wing Gallery at Athelhampton House. Gordon has works in major government collections and museums both in Britain and abroad. Along with being a renowned landscape painter he worked as a war artist alongside British and Dutch Royal Marines and Special Forces.  
September 10<sup>th</sup> 2025  
to March 7<sup>th</sup> 2026



One of England's  
finest Tudor Manor Houses,  
surrounded by award-winning gardens



Easily found, just off the A35 Puddletown bypass, five miles east of Dorchester.  
Athelhampton House, Dorchester, Dorset DT2 7LG [www.athelhampton.co.uk](http://www.athelhampton.co.uk)



**DorchesterArts**  
01305 266926 | [dorchesterarts.org.uk](http://dorchesterarts.org.uk)

## Of Land And Sea

A collection of work by four artists from the South Coast



The Corn Exchange Gallery, High East Street, Dorchester  
Tuesday 11 November - Saturday 3 January  
Open Tuesday to Saturday, 10am - 4pm

## Bridport Arts Centre

# Primordial Dance

An exhibition of paintings by Helen Garrett  
with poetry by Kate Innes

29 Nov-20 Dec | Tue-Sat, 10am-4pm

Free admission



BRIDPORT  
ARTSCENTRE



Supported using public funding by  
**ARTS COUNCIL  
ENGLAND**

Allsop Gallery, Bridport Arts Centre, 9 South Street, Bridport DT6 3NR



# Visual Arts

## 'UNCHARTED'

**4 - 21 November**

Ilminster Arts Centre, The Meeting House, East Street, ILMINSTER, TA19 0AN. Tuesday - Saturday 9.30am - 3pm. [ilminsterartscentre.com](http://ilminsterartscentre.com).

"Altered charts, ceramics and paintings inspired by artist Julia McKenzie's Cornish mariner great grandfather, John Henry Lowry."



## LUCY HAWKINS: 'WESTERLY PLACES'

**4 - 21 November**

Ilminster Arts Centre, The Meeting House, East Street, ILMINSTER, TA19 0AN. Tuesday - Saturday 9.30am - 3pm. [ilminsterartscentre.com](http://ilminsterartscentre.com).

"Exhibition of paintings created in Cornwall and the Southwest."

## 'MONTH OF ART IN SHEPTON MALLET'

**6 - 30 November**

Create@#8, 8 Town Street, SHEPTON MALLET, BA4 5BG. Thursday - Saturday 10am - 4pm, Sunday 30 November 10am - 4pm. 07766 493833. "New work by 20 artists."

## EAST HARPTREE BIG ARTS WEEKEND

**8 and 9 November**

East Harptree Theatre, EAST HARPTREE, near Wells, BS30 6AA. 10am - 4.30pm. 07817 16382 / [artshubharptree.com](http://artshubharptree.com). "Two day exhibition featuring the work of eleven local artists."

## EMILY STRACEY, ZOE LARKINS, SARAH REDMOND-FAREHAM

**12 - 23 November**

Walford Mill, Knobcrook Road, WIMBORNE, BH21 1NL. Wednesday - Saturday 10am - 5pm, Sunday 11am - 4pm. [walfordmillcrafts.co.uk](http://walfordmillcrafts.co.uk). "Exciting installations of original ceramic, textile and collage, alongside affordable prints, cards and handmade gifts."



BONNIE BROWN 'DIFFERENT PARTS' (Ink, graphite, charcoal on paper)

# The Dorset Open 2025

"Over 100 selected works capture the essence of the region's landscape, people, history and culture, exploring each artist's relationship to the area. Dorset's rich history has always provided stimulating subject matter for artists, from Turner, Constable and Thornhill to Paul Nash, Mary Spencer Watson, Sir Anthony Caro and Dame Elizabeth Frink. Now more than ever, the visual arts offer a vital means of understanding the world, inspiring, uplifting, and educating us all. Alongside the equally inspiring history and heritage of Dorset Museum & Art Gallery's collection, The Dorset Open showcases a wealth of creative exploration and enquiry. The Dorset Open forms part of a broader cultural initiative to celebrate the visual arts and support artists with opportunities to show their work, reinforcing the shared mission of Dorset Visual Arts and Dorset Museum & Art Gallery to champion creativity, inclusion, and community engagement across the region."

**Until 30 November:** Dorset Museum & Art Gallery, High West Street, DORCHESTER, DT1 1XA. 10am - 5pm. [dorsetmuseum.org](http://dorsetmuseum.org) / [dorsetvisualarts.org](http://dorsetvisualarts.org).

## 'PAINTERS PROGRESS'

**12 November - 6 December**

CICCIC, Paul Street, TAUNTON, TA1 3PF. Wednesday and Thursday 10am - 4pm, Friday and Saturday 10am - 1pm. 01823 337477 / [ciccic.co.uk](http://ciccic.co.uk).

"Themes and techniques include Winter, Inside to Outside, and urban sketching."

## SARA EASBY: 'WEATHERING'

**14 - 16 November**

Hours, 10 Colston Yard, BRISTOL, BS1 5BD. Friday 6 - 9pm, Saturday and Sunday 11am - 5pm. 07766 054659 / [hours-space.com](http://hours-space.com).

## 'WINTER OPEN'

**14 November - 2 December**

Sou'-Sou'-West Gallery, Manor Yard, Symondsbur Estate, SYMONDSBURY, Bridport, DT6 6HG. 10.30am - 3.30pm. 01308 301326.

## 'HUNTER'S MOON'

**15 and 16 November**

Hunter's Moon, Streetway Lane, CHESELBOURNE, near Dorchester, DT2 7NT. Saturday 11am - 8pm, Sunday 11am - 4pm. 07706 401104 / [janekchapman.com](http://janekchapman.com). Prints by Jane Chapman, Noah Warnes, Paul Cleden, Rachel Sargent, Buzz Burry, Sophie Sharp, and Jason Pizzey.

## 'THE FINAL JOURNEY'

**15 - 19 November**

Royal Manor Theatre, 138A Fortuneswell, PORTLAND, DT5 1LT. Saturday 12noon - 4pm, Sunday - Wednesday 10am - 4pm. 07794 460722. "An exploration of death and dying through art."

## 'RADIANCE'

**15 November - 10 January**

Sladers Yard, WEST BAY, Bridport, DT6 4EL. Wednesday - Saturday 10am - 4.30pm. 01308 459511 / [sladersyard.co.uk](http://sladersyard.co.uk). "Paintings and prints by Louise Balaam Martyn Brewster, Vanessa Gardiner, Howard Phipps, and Alfred Stockham, furniture and works in wood by Petter Southall, and ceramics by Lise Herud Braten, Emily Myers, Derek Matthews, Barbara Gittings, Björk Haraldsdóttir, Gabriele Koch, Yo Thom, Sue Ure and more..."



**peradam**  
giclee printing & art scanning

[peradam.co.uk](http://peradam.co.uk) | [jennifer@mount-art.co.uk](mailto:jennifer@mount-art.co.uk) | The Silk Mill Frome

**CALL  
FOR ARTISTS**

**Matford Barton**  
A NEW GARDEN NEIGHBOURHOOD

South West Exeter, Public Art - Pieces 1 & 2

**Value:** to £35,400.00

**Deadline:** 3<sup>rd</sup> February, 2026

**How to apply:** Full details are available in the South West Exeter Public Art Strategy - Artists' Brief.

**Enquiry:** [liz.avery@stantec.com](mailto:liz.avery@stantec.com)



**PUBLIC  
ART**



# Visual Arts

## CAROLYN FIELDS

**17 - 30 November**

The Duchess of Cornwall, 12 Queen Mother Square, POUNDBURY, Dorchester, DT1 3DD. Monday - Saturday 9am - 11pm, Sunday 9am - 10pm. [artattheduchess.com](http://artattheduchess.com).

"Pastel en plein air landscapes."

## BRIDGET BEATTIE

**19 - 25 November**

The Gallery, Shaftesbury Arts Centre, Bell Street, SHAFTESBURY, SP7 8AR. Monday - Saturday 10am - 4pm. [shaftesburyartscentre.org.uk](http://shaftesburyartscentre.org.uk).



## 'THE OPPORTUNISTS'

**20 November - 1 December**

The Gallery Upstairs, Upton Country Park, POOLE, BH17 7BJ. 10am - 4pm. [thegalleryupstairs.org.uk](http://thegalleryupstairs.org.uk).

"David Roberts, Pam Marshall, Sally Holland, Liz Magee, Barry Kavanagh, Heather Vowels, Steph Jones, and Freda Rhodes come together for this exhibition of diverse artistic styles."

Above: Sally Holland 'Provencal Town' (Oil, 39 x 40 cm)

## BEAR FLAT ARTISTS CHRISTMAS ART FAIR

**22 November**

Methodist Hall, Bruton Avenue, BATH, BA2 4QJ. 10am - 5pm. [bearflatartists.co.uk](http://bearflatartists.co.uk). "Handmade gifts and unique affordable artwork."

## THE COWPRINT ARTISTS GROUP: 'HOT OFF THE PRESS'

**22 November - 3 January**

Fisherton Mill, 108 Fisherton Street, SALISBURY, SP2 7QY. Monday - Saturday 9.30am - 5pm.

[fishertonmill.co.uk](http://fishertonmill.co.uk). "Original hand created prints, cards and gifts celebrating all things winter!"



CAROLINE MACKINTOSH 'DUNE, HOLKHAM'

## Landscape Open 2025

"Salisbury Museum is surrounded by landscapes and monuments which have inspired generations of artists. Given this importance, it seems appropriate that the museum is the setting for an open competition that celebrates the evolving relationship that artists have towards the landscape. The exhibition contains a diverse range of landscapes in a multitude of styles and media, reflecting the multifaceted relationships artists have to place, and the range of talented artists working within the established genre. 80 artworks have been selected from nearly 2,000 works that were submitted. The winning artist will be awarded £1,000, as well as a solo show at the Salisbury Museum, providing them with an exceptional opportunity for artistic recognition and exposure. Students are also able to win the Student Mentoring Prize, designed to provide them with expert guidance to help steer their artistic practice."

**Until 25 January:** Salisbury Museum, The Kings House, 65 The Close, SALISBURY, SP1 2EN. 10am - 5pm. £12 / £10.90 / £6 / £5.40. 01722 332151 / [salisburymuseum.org.uk](http://salisburymuseum.org.uk).

## MAYA RONCHETTI

**22 November - 4 January**

Studio 10, East Quay, Harbour Road, WATCHET, TA23 0AQ. 10am - 5pm. [eastquaywatchet.co.uk](http://eastquaywatchet.co.uk). "Maya uses natural dyes, textiles, and other found materials to create sculptures which explore our relationship with the natural environment."

## 'CHRISTMAS COLLECTION'

**25 November - 20 December**

Ilminster Arts Centre, The Meeting House, East Street, ILMINSTER, TA19 0AN. Tuesday - Saturday 9.30am - 3pm. [ilminsterartscentre.com](http://ilminsterartscentre.com).

"Annual Christmas collection featuring artisan arts and crafts makers from across the region."

## 'STUDIO 90 AT CHRISTMAS'

**26 November - 2 December**

The Gallery, Shaftesbury Arts Centre, Bell Street, SHAFTESBURY, SP7 8AR. Monday - Saturday 10am - 4pm.

01747 855243 / [shaftesburyartscentre.org.uk](http://shaftesburyartscentre.org.uk). "Diverse range of work."

## Ruth Readman and Dan Croft

Exploring landscape through ceramics and photography



17th - 23rd December  
SHAFTESBURY ARTS CENTRE  
Shaftesbury, Dorset, SP7 8AR  
10.30am - 4.30pm daily  
[ruthreadmancera.com](http://ruthreadmancera.com)  
[dancroftuk.co.uk](http://dancroftuk.co.uk)  
@ruthreadmancera @dancroftuk



## RED HOUSE OPEN 2025

25 October - 7 December 2025



[www.hampshireculture.org.uk/event/red-house-open-art-2025](http://www.hampshireculture.org.uk/event/red-house-open-art-2025)



# Visual Arts

## 'HOLLY AND IVY'

**26 November - 24 December**

Walford Mill, Knobcrook Road,  
WIMBORNE, BH21 1NL. Wednesday  
- Saturday 10am - 5pm, Sunday  
11am - 4pm. walfordmillcrafts.co.uk.

*"A vibrant mixed show featuring work from makers and artists from across Dorset and beyond."*



## 'AN ECLECTIC EYE'

**28 November - 7 December**

Furzebrook Studios, 52 Furzebrook  
Road, WAREHAM, BH20 5AX.

Saturday and Sunday 11am - 5pm,  
Monday - Friday 1 - 5pm.

timelinearts.co.uk. *"A mix of Modern British works, with many of the artists represented in the Tate Gallery collection, alongside contemporary paintings and studio pottery. The exhibition also includes French antique and vintage pottery together with jewellery. A truly eclectic mix."*

Above: Clifford Fishwick

## WINTER EXHIBITION AND OPEN STUDIOS

**29 - 30 November**

Portfield Studios, Portfield Lane,  
LANGPORT, TA10 0NJ. 11am - 4pm.  
07515 157162.

## 'CELEBRATE THE ECLECTIC, ECCENTRIC AND ENTERTAINING'

**29 November - 11 December**

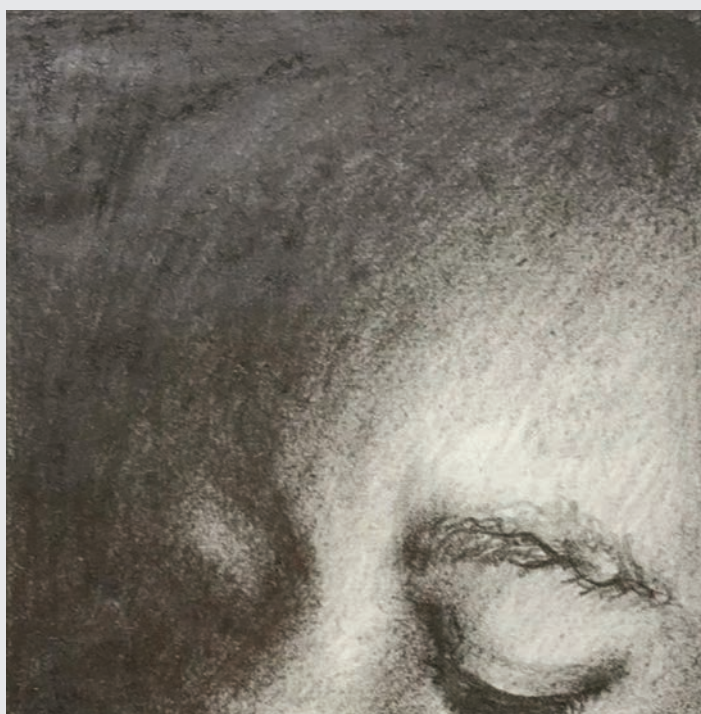
Hatch Gallery 7A Church Street,  
CHRISTCHURCH, BH23 1BW.

Monday - Saturday 11am - 3pm.  
07981 359084.

## 'TAKE 3 ARTISTS'

**1 - 30 December**

The Duchess of Cornwall, 12 Queen  
Mother Square, POUNDBURY,  
Dorchester, DT1 3DD. Monday -  
Saturday 9am - 11pm, Sunday 9am -  
10pm. artattheduchess.com. *"Work by Dianne Mary Alice, Elaine Harris, and Debbie Leech."*



SUSAN FRANCIS 'SLEEPING SQUAD'

## Drawing The Night In: The Second Sleep

*"As the hour changes and the Autumn light gives way to darkness, Henny Burnett, Susan Francis, Nick Grellier, Debbie Lee, Prudence Maltby, and Corinna Spencer come together to mark the drawing in of night. Their diverse and seductive interpretations, united by the subject of night's blackness and quiet shadows, explore and reveal the idiosyncrasies, subtleties, and truths of the dark hours."*

**Until 17 November:** The Long Gallery, Black Swan Arts, 2  
Bridge Street, FROME, BA11 1BB. Monday - Sunday 10am -  
4pm. 01373 473980 / blackswanarts.org.uk.

## 'WILD BEAUTY'

**3 - 9 December**

The Gallery, Shaftesbury Arts Centre,  
Bell Street, SHAFTESBURY, SP7 8AR.  
Monday - Saturday 10am - 4pm.  
shaftesburyartscentre.org.uk. *"Three friends - Olivia Willoughby, Sofie Page, and Helen Baddeley - are captured by creation."*

## BULL MILL WINTER OPEN STUDIOS

**5 - 7 December**

Bull Mill Studio, Bull Lane,  
CROCKERTON, Warminster, BA12  
8AY. Friday - Sunday 10am - 4pm.  
07730 400784 / nickandrew.co.uk /  
tanyahinton.co.uk. See 1 November.

## UPTON COUNTRY PARK OPEN 2025

**5 - 20 December**

The Gallery Upstairs, Upton Country  
Park, POOLE, BH17 7BJ. 10am -  
4pm. thegalleryupstairs.org.uk /  
pedas.org.uk. *"Highly acclaimed biennial event featuring selected work by the best of artists from across Dorset and within 30 miles of Poole."*

## 'GIFTED ART FAIR'

**5 December - 4 January**

Sou'-Sou'-West Gallery, Manor Yard,  
Symondsbury Estate,  
SYMONDSBURY, Bridport, DT6 6HG.  
10.30am - 3.30pm. 01308 301326 /  
sousouwest.co.uk. *"A glorious gathering of local artists and makers providing beautiful and affordable gift solutions."*

## COMMUNITY ARTISTS' FAIR

**6 December**

Circular Artspace, The Vassall  
Community Hub, Gill Avenue,  
Fishponds, BRISTOL, BS16 2QQ.  
10am - 4pm. circularartspace.co.uk.  
*"Meet the makers, explore handmade gifts, and find the perfect present to brighten someone's Christmas - or treat yourself to something special."*

## 'DRAW'

**10 - 16 December**

The Gallery, Shaftesbury Arts Centre,  
Bell Street, SHAFTESBURY, SP7 8AR.  
Monday - Saturday 10am - 4pm.  
01747 855243 /  
shaftesburyartscentre.org.uk.  
*"Exhibition of drawings by Gary Cook, Paul Newman, Peter Ursem, Debbie Lee, Sara Westaway, Percy Lizzard, Zara McQueen, and Clare Shepherd."*

## RUTH READMAN AND DAN CROFT

**17 - 23 December**

The Gallery, Shaftesbury Arts Centre,  
Bell Street, SHAFTESBURY, SP7 8AR.  
Monday - Saturday 10am - 4pm.  
01747 855243 /  
shaftesburyartscentre.org.uk.  
*"Exhibition bringing together the tactile depth of ceramics and the quiet intensity of landscape photography."*

# Kit Glaisyer

## Dreams of Light

Bridport Contemporary

11 Downes Street, Bridport, Dorset DT6 3JR

An Exhibition of Small Oil Paintings

Open Saturdays 10am to 3pm & by Appointment

kitglaisyer.com

07983 465789





SIAN CANN 'STREAM WATER CROWFOOT WHIMSY'

## Droves and Downs

"Droves & Downs features new work from four artists who received bursaries from Dorset Visual Arts to develop a body of work in response to Cranborne Chase National Landscape. Via an open call, artists were invited to submit proposals to explore the different facets of the Chase's ecology and heritage - meadows, river systems, and byways as well as aspects of its communities, human history and importance now as a National Landscape. Annabel Beasley, Siân Cann, Richard Gregory and Tonia Gunstone have spent the summer researching chosen areas, delving into this precious landscape, with support from Cranborne Chase National Landscape officers and advisors. As well as exploring both individual and collective stories of the Chase, the artists have also been encouraged to develop new approaches to their practice informed by some of the unique features of this secluded area which lies at the heart of Wessex. The distinctive landscape of the Chase, criss-crossed by droves, chalk streams, and ancient Roman roads, has long captivated artists. Its surreal Stone, Bronze, and Iron-Age monuments, interspersed with isolated groves, woods, and dry valleys, have inspired figures such as John Craxton, Stanley Spencer, and Elizabeth Frink."

**5 - 18 November:** The Gallery, Shaftesbury Arts Centre, Bell Street, SHAFTESBURY, SP7 8AR. Monday - Saturday 10am - 4pm. 01747 855243 / [shaftesburyartscentre.org.uk](http://shaftesburyartscentre.org.uk).

## DRAW

An exhibition of drawings by

Gary Cook

Paul Newman

Peter Ursem

Debbie Lee

Sara Westaway

Percy Lizzard

Zara McQueen

Clare Shepherd

10 - 16 December



THE GALLERY, SHAFTESBURY ARTS CENTRE  
Bell Street, Shaftesbury, SP7 8AR  
10am - 4pm every day



Follow **evolvermagazine** on Instagram



## THE CHRISTMAS SHOW

AT THE SLADE CENTRE

BEAUTIFUL AND AFFORDABLE PRINTS

From NOV 22nd



[www.thesladecentre.com](http://www.thesladecentre.com) for opening times



# Tincleton Gallery

contemporary fine art in Dorset

Summer 2025

gallery & guest artists

Sat 6 Sep 2025 – Sun 4 Jan 2026

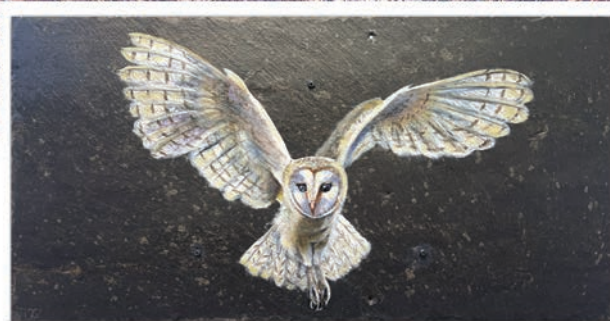
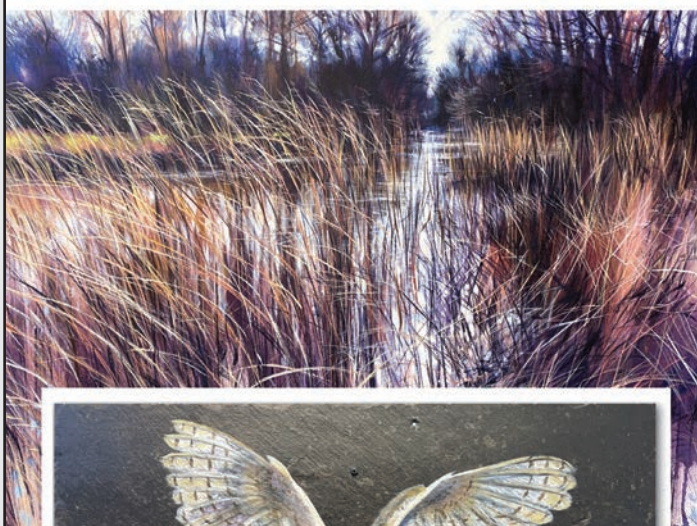


"Bird 1" linocut detail from A/P, by Jane Chapman

The Old School House, Tincleton, near Dorchester, DT2 8QR  
Saturday and Sunday or by appointment  
01305 848909 • tincletongallery.com

## Bull Mill Winter OPEN STUDIOS

Fri 5th, Sat 6th, Sun 7th December 10am - 4pm



Painting Drawing Jewellery Ceramics

Bull Mill Arts, Crockerton, Warminster BA12 8AY  
07730 400784 07713 277083  
www.nickandrew.co.uk www.tanyahinton.co.uk

## ILMINSTER ARTS CENTRE

### CHRISTMAS CRAFT EXHIBITION

25 NOVEMBER -  
20 DECEMBER  
9.30AM - 3.00PM

TUESDAY - SATURDAY



info@ilminsterarts.org.uk  
www.ilminsterartscentre.com  
East Street, Ilminster, TA19 0AN 01460 54973

ILMINSTER arts centre  
AT THE MEETING HOUSE

THG  
Thelma  
Hulbert  
Gallery

## PRESENT MAKERS 2025



CONTEMPORARY CRAFT  
AND DESIGN SELLING  
EXHIBITION

16 November –  
24 December

Tuesday – Saturday, 10am – 5pm  
Elmfield House, Dowell Street, Honiton, EX14 1LX  
01404 45006  
thelmahulbert.com  
Instagram X Facebook

© Studio Arvor © Claire Lowe



# Tim Edgar

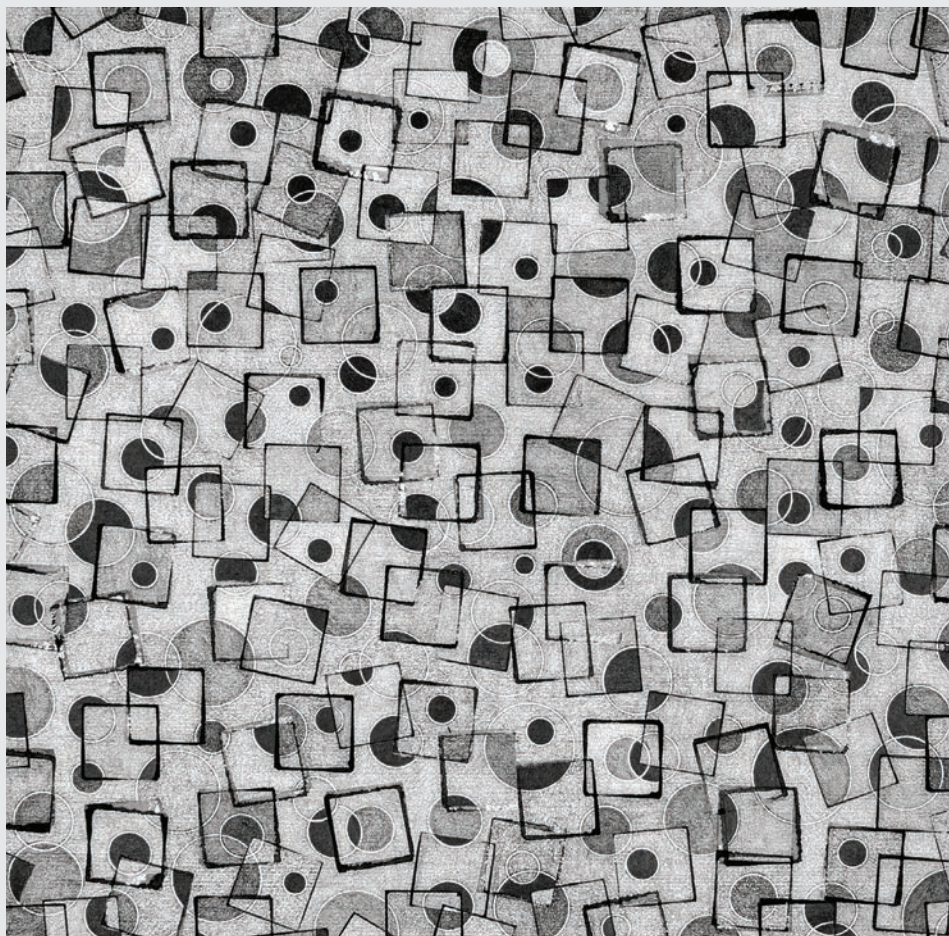
At the intersection of science and mathematics Tim Edgar makes drawings that subvert the precision of those disciplines, or at least that is what he has been doing since 2019. Before that his practice was photography. He is utterly passionate about drawing and although he has no regrets about his career path he does feel he is playing catch up. Trying to grab hold of all those years when he wasn't drawing.

The photography came about because, as a student, he was seduced by the alchemy of the photographic process. Those magical moments in the darkroom when a ghostly image starts to emerge on a blank piece of photographic paper as it floats in a tray of chemicals. We've all been there!

Superficially his drawings seem very measured. It's easy to make the assumption that they appear to owe much to that search for perfection that happens when working with a photographic image. But they are not striving for that type of perfection, and he constantly disrupts the square the line and the circle. His photography has provided him, however, with a gift for composition, which is an essential element of his new way of working.

Edgar's drawings rely heavily on an initial grid and that is where the mathematics comes in. He starts, almost always with a square format on which he draws a very faint ruled pencil grid. Hour after hour of painstaking markmaking follows. He rotates the paper at regular intervals, "trying to get overall evenness, symmetry and harmony so nothing is dominant, always trying to balance out circles and lines". As he works, tiny squares start to emerge, each one hosting a diagonal line of bright colour submerged in a wash of very pale watercolour. When the paint dries it leaves a slightly uneven edge all around it which subtly bleeds into the square next to it. These edges, irregular lines, which disrupt the perfection of the grid are exquisite.

Each drawing feeds off the one before, a journey towards something new, and as he progresses the feeling of disruption seems to increase. On a recent trip to London he bought a box of wooden stamps, the sort that children love - triangles, squares, hexagons, octagons, rectangles. They really are irresistible and Tim has been using them on his latest drawings, dipping them in thinned watercolour and stamping geometrical shapes at random before going back in with his customary colour pencils. The



'CIRCLE SHATTERED GRID' (Watercolour and graphite, 2025)

randomness of the stamped marks disrupts "the ready-made grid so it is losing its shape and structure and becoming shattered".

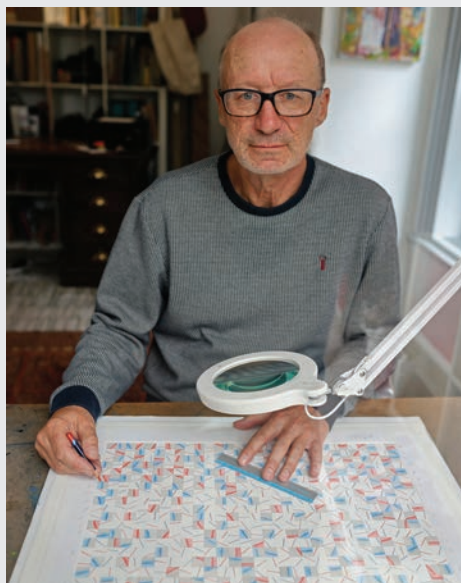
The tools he uses are graphite pencils and water-soluble coloured pencils, which achieve richer and richer hues with each layer, and feel almost good enough to eat. The addition of embossing moves the drawings towards three dimensions so they start to have a sense of existing as artifacts or objects. He is extremely particular about the papers he uses, rarely

using sketchbooks for studies, preferring the surface of high end smooth Hot-press paper for his finished work.

Music is significant in providing the work with a time-based element. The mutability of time as it stretches and contracts as he immerses himself in the process of drawing. He listens to jazz whilst drawing, and has recently been commissioned to make an artwork for a new album cover for a prominent UK saxophonist. "I like to think that my work echoes the patterns, rhythms, structures and tonal variations of jazz in some way."

Tim sees his work as "based around science and the cosmos, planetary systems and the contrast between the macro and the micro". He equates his circles with moons and suns, which interlock and impact on each other. He is deeply affected by the fragile nature of systems, a fragility that he aims to communicate through the imperfect nature of his drawings.

Fiona Robinson



Tim Edgar won the 'Evolver Magazine Feature Prize' at the RWA 172nd Annual Open. His drawings can be seen in the exhibition, see listing on page 15.

Portrait photograph by Conrad Tracy



# Music

## November and December 2025

### DORCHESTER BIG BAND

**1 November**

Weymouth Bay Methodist Church,  
WEYMOUTH, DT4 7TH. 7.30pm. £12  
/ £10. 01305 812637.

### PETE CATER TRIO

**2 November**

CICCIC, Paul Street, TAUNTON, TA1  
3PF. 12.15pm. £15 / £13. 01823  
337477 / ciccic.co.uk. "Amazing jazz  
on an autumn Sunday with some of  
the most seasoned and talented  
musicians on the jazz circuit."

### 'A CONCERT FOR JOE'

**2 November**

South Somerset Music Centre, South  
Street, CREWKERNE, TA18 8DB.  
3pm. £12. 07719 187508 /  
southsomersetmusiccentre.co.uk.  
"Fundraising concert for PSC  
(primary sclerosing cholangitis), a  
rare liver disease affecting younger  
people."

### ALICIA MALLACE-GOLDBOURNE WITH JACK CAMPBELL

**4 November**

Lighthouse, 21 Kingland Road,  
POOLE, BH15 1UG. 1.05pm. 01202  
280000. Lunchtime recital.



### JON DORAN & THE NORTHERN ASSEMBLY

**7 November**

Village Hall, SHIPTON GORGE, DT6  
4LZ. 7.30pm. £13 / £7. 01308  
897649 / artsreach.co.uk. "This  
ground-breaking new collaboration  
seeks to capture the excitement that  
lies within traditional song and  
breathe new life into old stories from  
the British Isles by injecting the  
energy they feel these narratives  
deserve."



## Nicola Benedetti

"Nicola Benedetti returns to pre-eminent stages across the UK  
for her first solo tour in over ten years."

**29 November:** Lighthouse, 21 Kingland Road, POOLE, BH15  
1UG. 7.30pm. 01202 280000 / lighthousepoole.co.uk.

### THE DREAMETTES

**7 November**

Ilminster Arts Centre, The Meeting  
House, East Street, ILMINSTER, TA19  
0AN. 7.30pm. £22. 01460 54973.

### TONY CHRISTIE

**7 November**

Matthews Hall, Fore Street,  
TOPSHAM, EX3 0HF. 7.30pm. 01392  
877895. "The legendary singer will  
be bidding an emotional farewell  
with his band in an intimate setting  
and performing all the classic songs."

### GINA GRIFFIN QUARTET

**7 November**

CICCIC, Paul Street, TAUNTON, TA1  
3PF. 8.15pm. £19 / £15. 01823  
337477 / ciccic.co.uk. "Gypsy jazz."

### JON DORAN & THE NORTHERN ASSEMBLY

**8 November**

Village Hall, LANGTON MATRAVERS,  
BH19 3HA. 7.30pm. £12.50 / £6.  
01929 423834 / artsreach.co.uk. See  
7 November.

### ROVING CROWS

**8 November**

Bridport Arts Centre, 9 South Street,  
BRIDPORT, DT6 3NR. 7.30pm. £16.  
01308 424204 / bridport-arts.com.

### JON DORAN & THE NORTHERN ASSEMBLY

**9 November**

Village Hall, DRIMPTON, DT8 3RF.  
7.30pm. £12.50 / £6. 07771 554601  
/ artsreach.co.uk. See 7 November.

### CREDENCE CLEARWATER REVIEW

**13 November**

Salisbury Arts Centre, Bedwin Street,  
SALISBURY, SP1 3UT. 7.30pm. £24.  
wiltshirecreative.co.uk.

### MIKE DANIELS & MATT FINCH

**13 November**

St Philip & St James Church,  
Vicarage Lane, NORTON ST PHILIP,  
Bath, BA2 7LY. 1pm. £10. 01373  
834488 / hardingtonvale.org.uk.  
"Baroque and classical to pop and  
jazz."

### BSO: 'SUNSHINE AND SHADE'

**13 November**

Great Hall, University of Exeter,  
Stocker Road, EXETER, EX4 4PY.  
7.30pm. £41 / £16. bsolive.com.

### DEAN CARTER

**13 November**

Durbervilles Cafe, 90 Cheap Street,  
SHERBORNE, DT9 3BJ. 7pm. £10.  
07453 776512.

### FOUR HANDS, ONE PIANO

**14 November**

Ilminster Arts Centre, The Meeting  
House, East Street, ILMINSTER, TA19  
0AN. 7.30pm. £20. 01460 54973.

### ESPEN ERIKSEN TRIO WITH ANDY SHEPPARD

**14 November**

Lighthouse, 21 Kingland Road,  
POOLE, BH15 1UG. 7.45pm. 01202  
280000. "Wonderful melodic jazz."

### CRAIG MILVERTON TRIO

**15 November**

St Michael's Church, Church Street,  
LYME REGIS, DT7 3DB. 7pm. £21 /  
£10. jazzjurassica.co.uk. Jazz.

**eps**  
INDEPENDENT RECORD STORE  
Unit 29, Vicarage Walk,  
The Quedam, Yeovil

**Vinyl Van**  
8 Pope Street  
Brewery Square  
Dorchester  
Dorset DT1 1GW  
Tuesday to Saturday  
from 10am

**THE BEAT & TRACK**  
INDEPENDENT RECORD STORE  
New and pre-loved vinyl, official t-shirts,  
merchandise and memorabilia  
**THE OLD SHAMBLES, SOUTH STREET,  
SHERBORNE, DT9 3LU**  
07730 356719  
thebeatandtrack.co.uk

**CLOCKTOWER RECORDS**  
St Michael's Estate  
Bridport  
Dorset DT6 3RR  
Monday to Saturday  
10am - 4.30pm  
01308 458077



## SKIMMITY HITCHERS

**15 November**

Sandford Orchards, The Cider Works, Commonmarsh Lane, CREDITON, EX17 1HJ. 6.30pm. £15. sandfordorchards.co.uk.

## MADDIE MORRIS

**15 November**

East Quay, Harbour Road, WATCHET, TA23 0AQ. 7.30pm. £5. eastquaywatchet.co.uk. "Maddie Morris reworks traditional folk songs to highlight contemporary issues and offer a fresh perspective on the world we live in today."

## RAG MAMA RAG

**15 November**

Caryford Community Hall, Maggs Lane, CASTLE CARY, BA7 7JJ. 7.30pm. £12. caryfordhall.co.uk.

## SOUNDCELLAR 5

**15 November**

The Mowlem, Shore Road, SWANAGE, BH19 1DD. 7.30pm. £14. 01929 422239 / themowlem.com. "Funky soul-jazz."

## JOANNA LAM

**16 November**

Kimmeridge House, Bournemouth University, Talbot Campus, POOLE, BH12 5BB. 3pm. £25. 01202 745516 / bournemouthchambermusic.co.uk. "Award-winning young pianist."

## THE FABULOUS RED DIESEL

**16 November**

Marine Theatre, Church Street, LYME REGIS, DT7 3QB. 8pm. £16 / £14. 01308 424901 / marinetheatre.com. "Beautiful original songs and sublime arrangements."

## SUNDAY BIG BAND JAZZ

**16 November**

CICCIC, Paul Street, TAUNTON, TA1 3PF. 12.15pm. £20 / £15. 01823 337477 / ciccic.co.uk.

## TERJE ISUNGSET ICE QUARTET

**19 November**

Lighthouse, 21 Kingland Road, POOLE, BH15 1UG. 7.45pm. 01202 280000 / lighthousepoole.co.uk. "This ice concert is a tribute to the most important thing in the whole world - nature - played on instruments made during Isungset's annual Ice Music Festival in Norway."



## Glaxo Babies

"In the annals of Bristol music history Glaxo Babies could have a book and a zone of greatness all of their own. Singles and EPs such as *Christine Keeler* and *This Is Your Life*, along with the seminal *Avon Calling* compilation John Peel recorded session version of *It's Irrational*, stormed the zeitgeist of late '70s, early '80s UK post punk. Four decades on, in 2025, another great leap forward brings the story to a stunning new destination with the vinyl and digital release on Bristol Archive Records in conjunction with their own imprint Liberated Sound Development of *Men of Stone*, the band's first new album in some forty years."

### GLAXO BABIES + SIMON CHESTERFIELD + OMEGA INSTITUTE

**20 November:** The Louisiana, Wapping Road, Bathurst Terrace, BRISTOL, BS1 6UA. 7.30pm. £15 / £12.50. wegotickets.com/event/674771.

### PETER KNIGHT & JOHN SPIERS

**19 November**

Salisbury Arts Centre, Bedwin Street, SALISBURY, SP1 3UT. 7.30pm. £22. wiltshirecreative.co.uk. "A captivating blend of folk and classical influences from legends of the English folk scene."

### DONOVAN HAFFNER QUINTET

**20 November**

The Grasshopper, 139 - 141 Bournemouth Road, POOLE, BH14 9HT. 7.30pm. £17.50 / £10. soundcellar.org. "Rising star saxophonist brings his excellent quintet to Poole."

### BSO STRINGS ENSEMBLE:

**'MUSICAL FAMILIES'**

**20 November**

The Exchange, STURMINSTER NEWTON, DT10 1FH. 7pm. £14 / £6. 01258 475137 / artsreach.co.uk. "A fascinating programme of musical exploration."



AXE & TRAP STUDIOS IS A RECORDING FACILITY SITUATED AT THE FOOT OF THE MENDIP HILLS IN WELLS, SOMERSET.

Three performance spaces, 24 channel Trident console, extensive analogue outboard and much more.

Take a tour at  
**AXEANDTRAPSTUDIOS.COM**



# CELEBRATE CHRISTMAS AND NEW YEAR WITH THE BSO!



Poole, Exeter, Taunton, Bristol, Weymouth and more!

**bsolive.com**

**01202 669925**

## Music



### Innes Sibun

"One of the finest electric blues guitarists in the UK."

**22 November:** CICCIC, Paul Street, TAUNTON, TA1 3PF.  
8.15pm. £19 / £15. 01823 337477 / ciccic.co.uk.

#### ACOUSTIC MUSIC CLUB

**20 November**  
CICCIC, Paul Street, TAUNTON, TA1 3PF. 7.30pm. £8 / £5. ciccic.co.uk.

#### THE MANFREDS

**21 November**  
Lighthouse, 21 Kingland Road, POOLE, BH15 1UG. 7.30pm. 01202 280000 / lighthousepoole.co.uk.

#### SOUTHERN BELLE

**21 November**  
CICCIC, Paul Street, TAUNTON, TA1 3PF. 7.30pm. £15 / £12. ciccic.co.uk.  
"Barn and ceilidh dance night."

#### 'LADY NADE SINGS NINA SIMONE'

**22 November**  
Lighthouse, 21 Kingland Road, POOLE, BH15 1UG. 7.45pm. 01202 280000 / lighthousepoole.co.uk.

#### FIRELIGHT TRIO

**23 November**  
Village Hall, CERNE ABBAS, DT2 7GY. 7.30pm. £13.50 / £6.50. 07823 778758 / artsreach.co.uk. See 21 November.

#### CURVED AIR

**23 November**  
Exeter Phoenix, Gandy Street, EXETER, EX3 3LS. 7.30pm. £24. exeterphoenix.org.uk. "With the legendary Sonja Kristina still at the helm, expect demonic violin, soaring vocals and superb musicianship!"

#### 'XMAS SONGS'

**23 November**  
East Quay, Harbour Road, WATCHET, TA23 0AQ. 4pm. 01984 263103 / eastquaywatchet.co.uk. "Annual festive sing-along with Watchet Community Choir."

#### BOURNEMOUTH SYMPHONY ORCHESTRA

**26 November**  
Lighthouse, 21 Kingland Road, POOLE, BH15 1UG. 7.30pm. 01202 280000 / lighthousepoole.co.uk. "Chloé Van Soeterstède takes the baton for a programme of music by Liszt, Korngold and Dvořák."

#### TARRASKA + LOVE IS ENOUGH + CHARLOTTE GEARY

**27 November**  
Lighthouse, 21 Kingland Road, POOLE, BH15 1UG. 7.30pm. 01202 280000 / lighthousepoole.co.uk.

#### BSO: 'HOLLYWOOD HIT'

**27 November**  
Great Hall, University of Exeter, Stocker Road, EXETER, EX4 4PY. 7.30pm. £41 / £16. 01202 669925 / bsolive.com.



## CHAMBER MUSIC MINI-TOURS

BRIDPORT — CREWKERNE  
ILMINSTER

## Concerts IN THE West 2026

- 13–14 FEBRUARY **Daniel Lehardt** PIANO
- 13–14 MARCH **Geirþrúður Guðmundsdóttir** CELLO & **Antoine Préat** PIANO
- 10–11 APRIL **Ensemble Augelletti**  
Olwen Foulkes RECORDERS — Ellen Bundy VIOLIN  
Carina Drury CELLO — Toby Carr LUTES  
Benedict Williams KEYBOARDS
- 15–16 MAY **Greenwich Trio**  
Lana Trotovšek VIOLIN — Heather Tuach CELLO  
Yoko Misumi PIANO
- 26–27 JUNE **Shiry Rashkovsky** VIOLA & **Lana Suran** PIANO
- 10–11 JULY **Ceruleo**  
Jenni Harper & Emily Owen SOPRANOS  
Toby Carr THEORBO — Kate Conway VIOLA DA GAMBA  
Satoko Doi-Luck HARPSICHORD
- 18–19 SEPTEMBER **Sophie Rosa** VIOLIN & **Ian Buckle** PIANO
- 16–17 OCTOBER **Oliver Wass** HARP & **Gabriela Opacka** VIOLIN
- 6–7 NOVEMBER **Fenella Humphreys** VIOLIN  
**Sam Armstrong** PIANO — **Gary Pomeroy** VIOLA  
**Cara Berridge** CELLO

ONLINE booking  
**www.concertsinthewest.org**  
concertsinthewest@gmail.com



#### FIRELIGHT TRIO

**21 November**  
Pamela Hambro Hall, WINTERBORNE STICKLAND, DT11 0NT. 7.30pm. £14 / £7. artsreach.co.uk. "Firelight Trio weave a rich tapestry of lively Swedish polskas and Scottish reels, lilting French waltzes, toe tapping klezmer, dazzling original tunes and more."

#### FIRELIGHT TRIO

**22 November**  
Village Hall, BURTON BRADSTOCK, DT6 4QD. 7.30pm. £14 / £7. artsreach.co.uk. See 21 November.

#### LEONIAN DREAM

**22 November**  
Bridport Arts Centre, 9 South Street, BRIDPORT, DT6 3NR. 7pm. £12. 01308 424204 / bridport-arts.com. "Indie rock band from Axminster."

#### MOONLIGHT SWING BAND

**22 November**  
Weymouth Bay Methodist Church, WEYMOUTH, DT4 7TH. 7.30pm. £12 / £10. 01305 812637.



**ALICE ZAWADZKI, FRED THOMAS,  
MISHA MULLOV-ABBADO**  
**28 November**

The Grasshopper, 139 - 141  
Bournemouth Road, POOLE, BH14  
9HT. 7.45pm. £20 / £11.  
soundcellar.org. Jazz.

**ALICE ZAWADZKI, FRED THOMAS,  
MISHA MULLOV-ABBADO**  
**28 November**

Lighthouse, 21 Kingland Road,  
POOLE, BH15 1UG. 7.45pm.  
lighthousepoole.co.uk. Jazz.

**OLD BABY MACKEREL**

**28 November**

The Ropemakers, 36 West Street,  
BRIDPORT, DT6 3QP. 8.30pm. 01308  
421255 / theropemakers.com.  
"Bluegrass like no other!"

**LA VIE EN ROSE**

**28 November**

Bridport Arts Centre, South Street,  
BRIDPORT, DT6 3NR. 8pm. £18 / £9.  
01308 424204 / bridport-arts.com.  
"The exuberant, toe-tapping music of  
1930s Paris played with a swing and  
joie de vivre as fresh today as when  
Django Reinhardt and Stéphane  
Grappelli first conjured it up."



**CONSONE QUARTET**

**28 November**

Bridport Arts Centre, 9 South Street,  
BRIDPORT, DT6 3NR. 11.30am. £15.  
01308 424204 / bridport-arts.com.  
"The first period instrument string  
quartet to be selected as BBC New  
Generation Artists, the Consone  
Quartet are known for their honest  
and expressive interpretations of  
repertoire, notably from the classical  
and romantic eras."

**CONSONE QUARTET**

**28 November**

Ilminster Arts Centre, The Meeting  
House, East Street, ILMINSTER, TA19  
0AN. 7.30pm. £20. 01460 54973 /  
themeetinghouse.org.uk. See above.



## Hot Fingers

"Expect a mix of music from the 1920s and 1930s including hot  
jazz, country blues, gypsy swing, novelty foxtrots, gospel and  
more!"

**28 November:** Village Hall, WOODLANDS, BH21 8LJ. 7.30pm.  
£12.50 / £6. 07462 570117 / artsreach.co.uk.

**29 November:** Village Hall, MILBORNE ST ANDREW, DT11 0JX.  
7.30pm. £12.50 / £6. 01258 839060 / artsreach.co.uk.

**30 November:** Village Hall, CORFE CASTLE, BH20 5EE. 7.30pm.  
£12.50 / £6. 07590 352219 / artsreach.co.uk.

**PALOOKA 5 + LOS COYOTE MEN  
+ 3ET**

**29 November**

CICCIC, Paul Street, TAUNTON, TA1  
3PF. 8.30pm. £14 / £12. 01823  
337477 / ciccic.co.uk. "Three  
amazing bands plus vinyl DJs and  
dancers."

**CONSONE QUARTET**

**29 November**

The Dance House, Gouldsbrook  
View, North Street, CREWKERNE,  
TA18 7AL. 6.45pm. £20. 01460  
75928 / concertsinthewest.org. See  
28 November.

**KEYSIDE**

**1 December**

The Louisiana, Wapping Road,  
Bathurst Terrace, BRISTOL, BS1 6UA.  
7.30pm. £13. thelouisiana.net.

**BSO: 'A FINE ROMANCE'**

**3 December**

Lighthouse, 21 Kingland Road,  
POOLE, BH15 1UG. 7.30pm. 01202  
280000 / lighthousepoole.co.uk.

**JESPER SVEDBERG AND HUGO  
SVEDBERG**

**4 December**

Lighthouse, 21 Kingland Road,  
POOLE, BH15 1UG. 1.05pm. 01202  
280000. "Lunchtime recital."

**'A NIGHT AT THE OPERA'**

**4 December**

Village Hall, STUDLAND, BH19 3BT.  
7.30pm. £12.50 / £6. 01929 450587  
/ artsreach.co.uk. "Expect a  
wonderful show for both opera  
newbies and aficionados alike."

**SOUTH SOMERSET COMMUNITY  
CHOIR CHRISTMAS CONCERT**

**5 December**

Methodist Church, 36 South Street,  
CREWKENE, TA18 8DB. 7pm. £7.  
southsomerse musiccentre.co.uk.

**THE BLOCKHEADS**

**5 December**

Cheese & Grain, Market Yard,  
FROME, BA11 1BE. 7.30pm. £26.  
cheeseandgrain.co.uk.



**THE EMBEZZLERS**

**6 December**

CICCIC, Paul Street, TAUNTON, TA1  
3PF. 8.30pm. £20 / £16. 01823  
337477 / ciccic.co.uk. Ska.

**THE BLOCKHEADS**

**6 December**

Exeter Phoenix, Gandy Street,  
EXETER, EX4 3LS. 7.30pm. £26.  
exeterphoenix.org.uk.

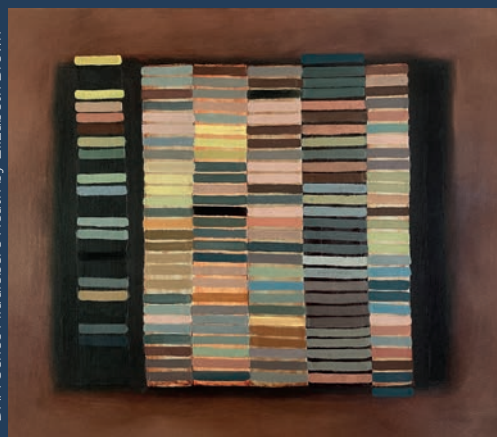
# SHERBORNE TIMES

A MONTHLY CELEBRATION OF PEOPLE, PLACE AND PURVEYOR

## OUT NOW AND ONLINE

sherbornetimes.co.uk

Artist at Work No.82:  
DNA Series Middlebere Heath by Elizabeth Brown





## SKIMMITY HITCHERS

**6 December**

Shire Hall, High West Street,  
DORCHESTER, DT1 1UY. 6.30pm.  
£15. [skimmityhitchers.com](http://skimmityhitchers.com). "Album  
launch party."

## BRUE BOYS

**6 December**

Caryford Community Hall, Maggs  
Lane, CASTLE CARY, BA7 7JJ.  
7.30pm. £10. [caryfordhall.co.uk](http://caryfordhall.co.uk).

## LEVY / ROBSON INTERNATIONAL QUARTET

**7 December**

The Grasshopper, 139 - 141  
Bournemouth Road, POOLE, BH14  
9HT. 7.30pm. £17.50 / £10.  
[soundcellar.org](http://soundcellar.org).

## JOHN ETHERIDGE & CHRIS GARRICK

**10 December**

Village Hall, HINTON MARTELL,  
BH21 7HE. 7.30pm. £13 / £6. 01258  
840066 / [artsreach.co.uk](http://artsreach.co.uk). "This free-  
wheeling pair use extensive looping  
and effects to create exotic tapestries  
of sound."

## BSO: 'MONUMENTAL BRAHMS'

**10 December**

Lighthouse, 21 Kingland Road,  
POOLE, BH15 1UG. 7.30pm. 01202  
280000 / [lighthousepoole.co.uk](http://lighthousepoole.co.uk).

## LORIKEET

**11 December**

St Philip & St James Church,  
Vicarage Lane, NORTON ST PHILIP,  
Bath, BA2 7LY. 1pm. £10. 01373  
834488 / [hardingtonvale.org.uk](http://hardingtonvale.org.uk).  
"Indie-folk trio."

## BSO: 'MONUMENTAL BRAHMS'

**11 December**

Gransden Hall, Sherborne Girls,  
Bradford Road, SHERBORNE, DT9  
3QN. 7.30pm. £39. [bsolive.com](http://bsolive.com).

## JOHN ETHERIDGE & CHRIS GARRICK

**11 December**

Village Hall, HALSTOCK, BA22 9SG  
7.30pm. £12.50 / £6. 01935 891744  
/ [artsreach.co.uk](http://artsreach.co.uk). See 10 December.

## HUNDRED FACES

**12 December**

CICCIC, Paul Street, TAUNTON, TA1  
3PF. 8.30pm. £19 / £15. 01823  
337477 / [ciccic.co.uk](http://ciccic.co.uk).



## BSO: Love and Devotion

"Ravel's *Le tombeau de Couperin*, Wagner's *Wesendonck Lieder*,  
Duruflé's *Requiem*, with Bournemouth Symphony Chorus, plus  
star soloist and choral conductor David Hill."

**12 November:** Lighthouse, 21 Kingland Road, POOLE, BH15  
1UG. 7.30pm. 01202 280000 / [lighthousepoole.co.uk](http://lighthousepoole.co.uk).

## JOHN ETHERIDGE & CHRIS GARRICK

**12 December**

Village Hall, PORTESHAM, DT3 4NS.  
7.30pm. £13 / £6. 01305 871117 /  
[artsreach.co.uk](http://artsreach.co.uk). See 10 December.

## THOKOZILE COLLECTIVE + THE BOSSA DEFINITIVA TRIO

**12 December**

Lighthouse, 21 Kingland Road,  
POOLE, BH15 1UG. 7.45pm.  
[lighthousepoole.co.uk](http://lighthousepoole.co.uk). Jazz.

## JOHN ETHERIDGE & CHRIS GARRICK

**13 December**

Portman Hall, SHILLINGSTONE,  
DT11 0SF. 7.30pm. £13 / £6. 01258  
860319. See 10 December.

## 'CAROLS FOR CHOIRS'

**13 December**

South Somerset Music Centre, South  
Street, CREWKERNE, TA18 8DB.  
10am. £15. 07719 187508 /  
[southsomersetmusiccentre.co.uk](http://southsomersetmusiccentre.co.uk).

## 'A NIGHT AT THE OPERA'

**14 December**

St Andrew's Church, YETMINSTER,  
DT9 6LQ. 7pm. £12.50 / £6. 01935  
873546 / [artsreach.co.uk](http://artsreach.co.uk). See 4  
December.

## SUNDAY BIG BAND

**14 December**

CICCIC, Paul Street, TAUNTON, TA1  
3PF. 12.15pm. £19 / £15. 01823  
337477 / [ciccic.co.uk](http://ciccic.co.uk). "Annual  
CICCIC Christmas special."

## DORSET YOUTH JAZZ

**ORCHESTRA**

**14 December**

The Mowlem, Shore Road,  
SWANAGE, BH19 1DD. 7.30pm. £10.  
01929 422239 / [themowlem.com](http://themowlem.com).  
"Dorset's talented young players  
feature in a full big band lineup.  
Expect festive favourites alongside  
classic and contemporary jazz,  
performed by the next generation of  
jazz musicians."

## BSO BRASS OCTET: 'WINTER FANFARE'

**16 December**

Parish Church, BLANDFORD, DT11  
7AD. 7.30pm. £14 / £6. 07729  
786600 / [artsreach.co.uk](http://artsreach.co.uk).

## TAUNTON CHORAL SOCIETY: 'SING AT CHRISTMAS'

**16 December**

CICCIC, Paul Street, TAUNTON, TA1  
3PF. 7.30pm. £10 / £8. [ciccic.co.uk](http://ciccic.co.uk).

## MOSCOW DRUG CLUB

**16 December**

Lighthouse, 21 Kingland Road,  
POOLE, BH15 1UG. 8pm. 01202  
280000 / [lighthousepoole.co.uk](http://lighthousepoole.co.uk).

## BSO: 'MESSIAH'

**17 December**

Lighthouse, 21 Kingland Road,  
POOLE, BH15 1UG. 7.30pm. 01202  
280000 / [lighthousepoole.co.uk](http://lighthousepoole.co.uk).  
"Handel's glorious oratorio is one of  
the most celebrated pieces in the  
classical canon."

## BSO BRASS OCTET: 'WINTER FANFARE'

**17 December**

St Christopher's Church, WINFRITH,  
DT2 8JW. 7.30pm. £16 / £10. 01305  
567748. See 16 December.

## BSO: 'LAST NIGHT OF THE CHRISTMAS PROMS'

**19 December**

Great Hall, University of Exeter,  
Stocker Road, EXETER, EX4 4PY.  
7.30pm. £41 / £16. [bsolive.com](http://bsolive.com).

## BSO: 'LAST NIGHT OF THE CHRISTMAS PROMS'

**20 December**

Lighthouse, 21 Kingland Road,  
POOLE, BH15 1UG. 7.30pm. 01202  
280000 / [lighthousepoole.co.uk](http://lighthousepoole.co.uk).

## ARMONICO CONSORT: 'CAROLS BY CANDELIGHT'

**21 December**

Lighthouse, 21 Kingland Road,  
POOLE, BH15 1UG. 4pm. 01202  
280000 / [lighthousepoole.co.uk](http://lighthousepoole.co.uk).

## BSO: 'CELEBRATION OF CAROLS'

**23 December**

Lighthouse, 21 Kingland Road,  
POOLE, BH15 1UG. 3 and 7pm.  
01202 280000 /  
[lighthousepoole.co.uk](http://lighthousepoole.co.uk).



**EVOLVER**  
magazine

Follow **evolvermagazine** on Instagram

**EVOLVER**  
magazine

## FREE LISTINGS

Exhibition and performance listings should be emailed  
to [listings@evolver.org.uk](mailto:listings@evolver.org.uk)

Please send ALL information in the following order:

Event, date(s), venue, address (including postcode),  
times, admission fee (if any), contact number / website,  
up to 30 words about your event



# Performance

November and December 2025

## 'TOO MANY GREEK MYTHS'

**3 November**

Bridport Arts Centre, 9 South Street,  
BRIDPORT, DT6 3NR. 7.30pm. £15.  
01308 424204 / bridport-arts.com.

"Twenty Greek myths crammed into  
one chaotic, side-splitting show!"

## 'SHOCK HORROR'

**5 November**

Lighthouse, 21 Kingland Road,  
POOLE, BH15 1UG. 7.45pm.  
lighthousepoole.co.uk. See page 7.

## FLAMENCO ORÍGENES

**6 November**

Lighthouse, 21 Kingland Road,  
POOLE, BH15 1UG. 7.45pm. 01202  
280000 / lighthousepoole.co.uk.

## LOUISE JORDAN: 'BEHIND ENEMY LINES'

**7 November**

Comrades Hall, BROADWINDSOR,  
DT8 3QP. 7.30pm. £12.50 / £6.  
07740 949904 / artsreach.co.uk.

"This brand-new show tells the story  
of the women who worked as spies  
in occupied France during the  
Second World War."

## LOUISE JORDAN: 'BEHIND ENEMY LINES'

**8 November**

Village Hall, MARNHULL, DT10 1JZ.  
7.30pm. £12.50 / £6. 01258 820458  
/ artsreach.co.uk. See 7 November.

## 'LIGHT NIGHT'

**8 November**

East Quay, Harbour Road,  
WATCHET, TA23 0AQ. 6pm. 01984  
263103 / eastquaywatchet.co.uk.  
"Dazzling projections, fire  
performance, and live music from  
Dirty Cash."

## MILTON JONES: 'HA!MILTON'

**8 November**

Lighthouse, 21 Kingland Road,  
POOLE, BH15 1UG. 7.30pm. 01202  
280000 / lighthousepoole.co.uk.

"This is not a musical. Milton Jones is  
tone deaf and has no sense of  
rhythm, but at least he doesn't make  
a song and dance about it. A whole  
new show of daftness. You know it  
makes sense."



## Don't Look Now

"Grief is a trickster. It plays with time, with memory... with reality itself. Dare to look - just don't look now. A couple devastated by loss escape to the shadowed canals of Venice, hoping to leave their past behind - but the city has other plans. As eerie visions blur the line between the living and the dead, an ominous presence stalks them through the labyrinthine streets. Fate is closing in - can one truly escape their destiny? A masterclass in slow-burning dread and supernatural unease, Daphne du Maurier's *Don't Look Now* is a spine-chilling, thrilling descent into grief, guilt and the terrifying possibility that some warnings should never be ignored."

**Until 15 November:** Salisbury Playhouse, Malthouse Lane, SALISBURY, SP2 7RA. 7.30pm  
(Matinees 2.15pm). 01722 320333 / wiltshirecreative.co.uk.

## PAUL TONKINSON + ALISTAIR WILLIAMS + LOUISE LEIGH

**8 November**

Lighthouse, 21 Kingland Road,  
POOLE, BH15 1UG. 8pm.  
lighthousepoole.co.uk. Comedy.

## LOUISE JORDAN: 'BEHIND ENEMY LINES'

**9 November**

Village Hall, NETHER COMPTON,  
DT9 6QA. 3pm. £12.50 / £6.  
artsreach.co.uk. See 7 November.

## 'MAKING A KILLING'

**11 November**

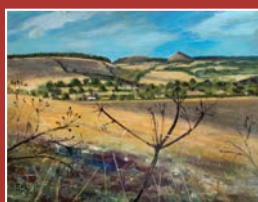
The Exchange, STURMINSTER  
NEWTON, DT10 1FH. 7.30pm. £14 /  
£6. 01258 475137 / artsreach.co.uk.  
"Razor-sharp, dark comedy."

# Shaftesbury Arts Centre



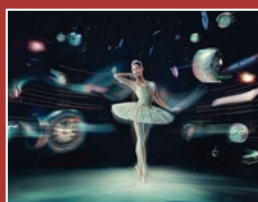
## 'The Great Baldini'

Theatre Comedy  
8 Nov @ 2.30 + 7.30pm  
£10 / £7 + £15 / £10



## 'Autumn Art Collection'

Bridget Beattie  
19 - 25 November  
10am - 4pm daily



## 'Cinderella'

Royal Ballet Live Recording  
25 November @ 7.15pm  
£15 / £12.50



## GreenMatthew

'Midwinter Revels'  
Theatre Music  
28 Nov @ 7.30pm · £18 / £15



## ' Fargo'

Film (15)  
19 December @ 7.30pm  
£7.50 / £6.50 / £5.50

11 - 13 Bell Street, Shaftesbury, Dorset SP7 8AR 01747 854321 • shaftesburyartscentre.org.uk



# Performance

## 'MAKING A KILLING'

**12 November**

The Mowlem, Shore Road,  
SWANAGE, BH19 1DD.  
themowlem.com. See 11 November.

## 'MAKING A KILLING'

**13 November**

Lighthouse, 21 Kingland Road,  
POOLE, BH15 1UG. 8pm. 01202  
280000. See 11 November.

## LOUISE JORDAN: 'BEHIND ENEMY LINES'

**14 November**

Memorial Hall, PIDDLTRENTHIDE,  
DT2 7QF. 7.30pm. £12.50 / £6.  
artsreach.co.uk. See 7 November.

## 'MAKING A KILLING'

**14 November**

Royal Manor Theatre, PORTLAND,  
DT5 1LT. 7.30pm. £12.50 / £6. 03336  
663366. See 11 November.

## 'STAND UP FOR CIDER'

**14 November**

CICCIC, Paul Street, TAUNTON, TA1  
3PF. 8.15pm. £19 / £15. 01823  
337477 / ciccic.co.uk. "Comedy  
show and competition final."

## NICK HENNESSEY: 'DREAMING THE GREAT BEAR'

**14 November**

Village Hall, SANDFORD ORCAS,  
DT9 4RX. 7.30pm. £12.50 / £6.  
07734 088958 / artsreach.co.uk  
"Internationally acclaimed storyteller  
and musician Nick Hennessey forges  
a world into being. Expect a  
remarkable, elemental epic and a  
world of sound as we enter the wild,  
playful, and surreal territories of the  
Finnish myth, the Kalevala."

## 'TOO MANY GREEK MYTHS'

**14 and 15 November**

Salisbury Arts Centre, Bedwin Street,  
SALISBURY, SP1 3UT. 7.30pm  
(Saturday matinee 2.15pm). £19.  
wiltshirecreative.co.uk. See 3  
November.

## NICK HENNESSEY: 'DREAMING THE GREAT BEAR'

**15 November**

Village Hall, CHILD OKEFORD, DT11  
8EX. 7.30pm. £12.50 / £6. 01258  
861621 / artsreach.co.uk. See 14  
November.



## Emma

"Lighthouse Poole is excited to join in the 250th anniversary of one of Britain's favourite writers with the eagerly anticipated new stage adaptation of Jane Austen's comedy of manners, *Emma*. The cast includes rising star India Shaw-Smith, soon to be seen on TV in *Spartacus: House of Ashur*, as Austen's heroine Emma Woodhouse.

**10 - 15 November:** Lighthouse, 21 Kingland Road, POOLE, BH15 1UG. 7.45pm (Thursday and Saturday matinees 2.30pm). 01202 280000 / lighthousepoole.co.uk.

## 'THE CHOICE OF HERCULES'

**15 November**

South Somerset Music Centre, South  
Street, CREWKERNE, TA18 8DB.  
7pm. £15 / £12. 07719 187508.

## STEVIE MARTIN: 'CLOUT'

**15 November**

Lighthouse, 21 Kingland Road,  
POOLE, BH15 1UG. 8pm.  
lighthousepoole.co.uk. Comedy.

## NICK HENNESSEY: 'DREAMING THE GREAT BEAR'

**16 November**

Village Hall, BROADMAYNE, DT2  
8EW. 7.30pm. £12.50 / £6.  
artsreach.co.uk. See 14 November.

## MATT RICHARDSON: 'BRASH'

**20 November**

Lighthouse, 21 Kingland Road,  
POOLE, BH15 1UG. 8pm.  
lighthousepoole.co.uk. Comedy.

## HANNAH MAXWELL: 'I, AMDRAM'

**21 November**

Village Hall, EAST STOUR, SP8 5JY.  
7.30pm. £12.50 / £6. 07534 006951  
/ artsreach.co.uk. "Award-winning  
storytelling show."

## 'THE GREATEST ROBOT EVER'

**22 November**

Caryford Community Hall, Maggs  
Lane, CASTLE CARY, BA7 7JJ.  
2.30pm. £6 / £3. caryfordhall.co.uk.

## HANNAH MAXWELL: 'I, AMDRAM'

**23 November**

Hut, POWERSTOCK, DT6 3TB.  
7.30pm. £12.50 / £6. 07775 590579  
/ artsreach.co.uk. See 21 November.

## HANNAH MAXWELL: 'I, AMDRAM'

**23 November**

Village Hall, WEST STAFFORD, DT2  
8AG. 7.30pm. £12.50 / £6. 07968  
633834 / artsreach.co.uk. See 21  
November.

## 'EBENEZER SCROOGE'

**28 and 29 November**

Backyard Theatre, 5 Anchor Street,  
WATCHET, TA23 0AZ. 7.30pm. £10.  
backyard-theatre-watchet.uk.

## 'MODERN MILESTONES'

**28 and 29 November**

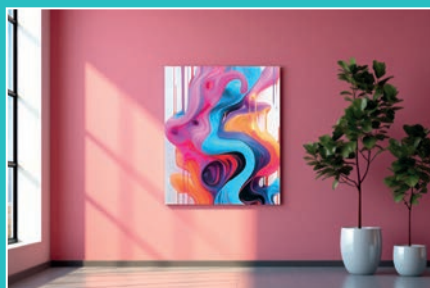
Memorial Theatre, Christchurch  
Street West, FROME, BA11 1EB.  
7.30pm. £22 / £18. 07798 626555 /  
fromememorialtheatre.org.uk. "The  
acclaimed choreographer  
Christopher Bruce presents his new  
dance work, set to six of Leonard  
Cohen's best songs."

## YEOVIL POETS SOCIETY:

## 'CHRISTMAS WINTER WARMERS'

**29 November**

Yeovil Art Space, 13 - 15 Vicarage  
Walk, YEOVIL, BA20 1EU. 3pm.  
07360 861358 / yeovilartspace.uk.  
"Soothing and silly seasonal poetry."



## PERFECT POSTERS



## AMAZING GICLÉE PRINTS

SCANNING • PHOTOGRAPHY • CALENDARS • INVITATIONS • BOOKMARKS • BROCHURES • FLYERS • STICKERS  
BANNERS • FOAMEX SIGNS • LETTERHEADS • BUSINESS CARDS • FOLDERS • DESKPADS • BESPOKE ITEMS



## POSTCARDS AND GREETING CARDS



**FLAYDEMOUSE MEDIA**

01935 479 453

WWW.FLAYDEMOUSE.COM

8 BUCKLAND ROAD, YEOVIL, SOMERSET BA21 5EA



Celebrating 14 Years  
of Arts & Culture  
Provision

**ART**

**MUSIC**

**ciccic** | creative  
innovation  
centre

**CICCIC Arts Centre & Arts Hub, Taunton, Somerset**  
CICCIC, Memorial Hall, Paul St, Taunton, TA1 3PF | Arts Hub, Belvedere Rd, Taunton TA1 1BT  
[www.ciccic.co.uk](http://www.ciccic.co.uk)

**COMEDY**

Outstanding Community  
Arts & Cultural Development  
Organisation 2025 - South West  
Award Winner

**WORKSHOPS**

Blabbermouth Storytelling presents


**THE MISTLETOE BOUGH**

**A CHRISTMAS GHOST STORY**

A CANDLELIT EVENING OF SPINECHILLING STORYTELLING:  
A CLASSIC SEASONAL TALE RE-TOLD.

1st December: Crewkerne Museum  
3rd December: Sherborne Digby Memorial Church Hall  
4th December: Langport All Saints Hall  
6th December: Cheddar Village Hall  
9th December: Weston Museum, Weston-super-Mare  
12th December: The Market House, Castle Cary  
13th December: Broomfield Village Hall, Quantock Hills  
14th December: Dunster Tithe Barn  
16th December: The Bennett Centre, Frome  
18th December: The Waltons, Cullompton  
19th December: Town Hall, Wells

Tickets **£14/£8** from  
[blabbermouthstorytelling.co.uk/events](http://blabbermouthstorytelling.co.uk/events)



# lighthouse

Arts & Entertainment | Poole

**TUE 16 DEC**

## Moscow Drug Club

These transcendent troubadours of world jazz and folk return to deliver another intoxicating musical experience where elements of Berlin cabaret, Latin tinge, French musette and storytelling meet.



**SAT 10 JAN**

## An Evening with Nimsdai Purja

To Nims, nothing is impossible. He's on a mission to summit the 14 peaks for the third time in another world first, sharing his inspirational story of determination and giving back in this unique, exclusive evening.



**THU 22 JAN**

## Parody of the Rings

A hilarious and epic adventure. Comedy chaos ensues as hapless local cinema ushers improvise the entire Lord of The Rings trilogy in front of a live audience after misplacing the DVDs. Uproarious.



**TUE 27 – SAT 31 JAN**

## The Shawshank Redemption

An electrifying stage production of the 1994 seven-time Academy Award winning film based on Stephen King's 1982 novella. A gripping story of friendship and hope behind bars.



**SAT 7 FEB**

## Third Class

The compelling tale of an unknown hero from a well-known story seeking revenge. This one-man play by Russell Lucas is based on the life of Titanic survivor Edward Dorking, using movement, projection and historical facts.



**| Different every day**



# Performance

## 'PEPPER AND HONEY'

**29 November**

Village Hall, SIXPENNY HANDLEY, SP5 5NJ. 7.30pm. £12.50 / £6. [artsreach.co.uk](http://artsreach.co.uk). "A poignant, subtle and timely play about the journey of change, cultural differences, and the conflict between upholding the traditions of the 'old country' and embracing those of the new."

## 'JACK AND THE BEANSTALK'

**29 November - 11 January**

Salisbury Playhouse, Malthouse Lane, SALISBURY, SP2 7RA. Various times. [wiltshirecreative.co.uk](http://wiltshirecreative.co.uk).

## 'PEPPER AND HONEY'

**30 November**

Community Hall, LITTON CHENEY, DT2 9AU. 2.30pm. £12.50 / £6. [artsreach.co.uk](http://artsreach.co.uk). See 29 November.

## 'HAH! BUMHUG'

**3 December**

Royal Manor Theatre, PORTLAND, DT5 1LT. 7.30pm. £12.50 / £6. 03336 663366 / [artsreach.co.uk](http://artsreach.co.uk). "Yuletide laughs for all the family, featuring live music by Julian Gaskell."

## 'HAH! BUMHUG'

**4 December**

Village Hall, WINFRITH, DT2 8JR. 7.30pm. £12.50 / £6. 01305 853783 / [artsreach.co.uk](http://artsreach.co.uk). See 3 December.

## TOM STAGE: 'NAUGHTY BY NATURE'

**4 December**

Salisbury Arts Centre, Bedwin Street, SALISBURY, SP1 3UT. 7.30pm. £25. [wiltshirecreative.co.uk](http://wiltshirecreative.co.uk). Comedy.

## 'CABARET WITH CLAUS'

**5 December**

Lighthouse, 21 Kingland Road, POOLE, BH15 1UG. 8pm. 01202 280000 / [lighthousepoole.co.uk](http://lighthousepoole.co.uk). "Charlie Bicknell and Louise Innes return with their Christmas show, an evening of shamelessly festive insanity with angels, shepherds, scented candles and a glitterball rocket ship, a man formerly known as Tiny Tim and a goose. Maybe."

## 'HAH! BUMHUG'

**5 December**

Village Hall, CRANBORNE, BH21 5PZ. 7pm. £12.50 / £6. [artsreach.co.uk](http://artsreach.co.uk). See 3 December.



## The Mistletoe Bough

"For many years, during the Victorian and Edwardian eras, the telling of ghost stories was as much a part of Christmas as mince pies and carol singing. This December, Blabbermouth Community Storytelling will be continuing that tradition, bringing an atmospheric performance of the classic Christmas ghost story, *The Mistletoe Bough*, to venues across Wessex."

**1 December:** Crewkerne Museum, 29 Market Square, CREWKERNE, TA18 7LP. 01460 77079.

**3 December:** Digby Memorial Church Hall, Digby Road, SHERBORNE, DT9 3NL. 01935 815944.

**4 December:** All Saints Hall, 2 North Street, LANGPORT, TA10 9RQ.

**6 December:** Village Hall, Church Street, CHEDDAR, BS27 3RB.

**9 December:** Weston Museum, Burlington Street, WESTON-SUPER-MARE, BS23 1PR. 01934 621028.

**12 December:** The Market House, Market Place, CASTLE CARY, BA7 7AH. 01963 351763.

**13 December:** Village Hall, Fyne Court Cottage, BROOMFIELD, Bridgwater, TA5 2EQ.

**14 December:** Tithe Barn, Priory Green, DUNSTER, Minehead, TA24 6RY. 01643 821658.

**16 December:** The Bennet Centre, Vicarage Street, FROME, BA11 1PX.

**18 December:** The Walronds, 6 Fore Street, CULLOMPTON, EX15 1JL. 01884 35934.

**19 December:** Town Hall, Market Place, WELLS, BA5 2RB. 01749 673091.

All shows 7pm. £14 / £8. [blabbermouthstorytelling.co.uk](http://blabbermouthstorytelling.co.uk).

## 'HAH! BUMHUG'

**6 December**

Hall, STALBRIDGE, DT10 2NF. 7pm. £12.50 / £6. 01963 362355 / [artsreach.co.uk](http://artsreach.co.uk). See 3 December.

## 'DICK WHITTINGTON'

**11 December - 4 January**

Lighthouse, 21 Kingland Road, POOLE, BH15 1UG. Various times. 01202 280000 / [lighthousepoole.co.uk](http://lighthousepoole.co.uk).

## 'CABARET WITH CLAUS'

**12 December**

The Mowlem, Shore Road, SWANAGE, BH19 1DD. 7.30pm. £19 / £18. 01929 422239 / [themowlem.com](http://themowlem.com). See 5 December.

## MARKUS BIRDMAN + ANT DAWSON + INGRID DAHLE

**13 December**

Lighthouse, 21 Kingland Road, POOLE, BH15 1UG. 8pm. 01202 280000 / [lighthousepoole.co.uk](http://lighthousepoole.co.uk). Comedy.

## 'COMEDY NIGHT'

**13 December**

CICCIC, Paul Street, TAUNTON, TA1 3PF. 8pm. £19 / £15. 01823 337477 / [ciccic.co.uk](http://ciccic.co.uk).

## 'NOT TRULY DEAD'

**17 and 18 December**

Lighthouse, 21 Kingland Road, POOLE, BH15 1UG. 8pm. 01202 280000 / [lighthousepoole.co.uk](http://lighthousepoole.co.uk). "Three tales of the restless dead."

## 'OH, WHISTLE'

**19 December**

Lighthouse, 21 Kingland Road, POOLE, BH15 1UG. 8pm. 01202 280000 / [lighthousepoole.co.uk](http://lighthousepoole.co.uk). "A tale of nocturnal horror on the Suffolk coast."

## SHAZIA MIRZA + LUKE HONNORATY + RUSSELL ARATHOON

**20 December**

Lighthouse, 21 Kingland Road, POOLE, BH15 1UG. 8pm. 01202 280000 / [lighthousepoole.co.uk](http://lighthousepoole.co.uk). Comedy.

## 'CIRCUS EXTRAVAGANZA'

**29 December**

Town Hall, High Street, BRIDGWATER, TA6 3AS. 11am, 1 and 3pm. £7. 01278 427692.

# ONE-STOP DESIGN, PRINT & MAILING

We're friendly and knowledgeable.  
We're not flash or fancy, but we are really good at what we do.

Easy. Affordable. Dependable. Local.

Leaflets, flyers, brochures, booklets, magazines, folders and more.  
Design, print and mailing – all in one place.

What can we print for you today?

[enquiries@bishops.co.uk](mailto:enquiries@bishops.co.uk) | [bishops.co.uk](http://bishops.co.uk) | 023 9233 4900





# Evolver Magazine

## Our Wessex Sponsors and Outlets



**ACC@ARTS**  
**ARNOLFINI**  
EST. 1961

**ART** and BEYOND

**Athelhampton**  
HOUSE & GARDENS

**aztecmedia**

**b-side**

**BISHOPS**  
PRINTERS

**BlackSwanArts**

**Boilerhouse**  
GALLERY

**BOURNEMOUTH**  
**ARTS**  
CLUB

**BOURNEMOUTH**  
symphony orchestra

**BRIDPORT**  
**ARTSCENTRE**

**BULL MILL STUDIO**

**ciccic**

**Concerts**  
IN THE West

**DorchesterArts**

**DORSET**  
VISUAL  
ARTS

**EAST**  
**QUAY**

**HEART OF**  
**THE TRIBE**  
ART GALLERY

**ILMINSTER**  
**arts**  
**centre**  
AT THE MEETING HOUSE

**Kit Glaisyer**

**lighthouse**  
Arts & Entertainment - Poole

**Pound** Arts

**RWA**

**Shaftesbury**  
Arts Centre

**The Slade Centre**

**SLADERS YARD**

**SCW**  
somer  
set  
art works

**Sou'-Sou'-West**

**SOUTH WEST ART**  
COURSES

**THG**  
Thelma  
Hubert  
Gallery

**Tincleton Gallery**

**Walford Mill**  
**Crafts**

**WILTSHIRE**  
**CREATIVE**

**YEOVIL**  
ART SPACE



# Evolver Magazine

**EVOLVER MAGAZINE** IS AVAILABLE **FREE** AT THE FOLLOWING WESSEX OUTLETS:

ABBOTSBURY: Abbotsbury Studio, Clare Hawkes Fine Art, Dansel Gallery. ATHELHAMPTON: Athelhampton House. AXMINSTER: Archway Bookshop, Heritage Centre, Unique Framcraft. BATH: 44AD, Bath Artists' Studios, Beaux Arts, The Edge / ICIA, Holburne Museum, University of Bath, Victoria Art Gallery. BEAMINSTER: Art and Beyond, Beamister Books, Yarn Barton Centre. BLANDFORD: Blandford Fashion Museum, Bryanston Arts Centre, Forum Café, Forum Framers. BOURNEMOUTH: All Fired Up, Artcetera, Courtenay's Fine Art, Flux Framing, Pavilion Dance, Re-Imagine, Russell-Cotes Museum & Art Gallery. BOWER HINTON: The Hollies Hotel. BRADFORD ON AVON: Wiltshire Music Centre. BRIDGWATER: Bridgwater Arts Centre, Bridge Gallery, Engine Room. BROADWINDSOR: Record Vault. BRIDPORT: Art Unlimited, Bridport Arts Centre, Bridport Old Books, The Bull Hotel, Clocktower Records, Kit Glaisyer Fine Art, Lyric Theatre, Millside Picture Framing. BRISTOL: Arnolfini, Bristol Beacon, Bristol Fine Art, Centrespace, Clifton Contemporary, Clifton Fine Art, Create Centre, Folk House, Jamaica Street Artists, Lime Tree Gallery, New Cut Coffee, North Street Gallery, PRSC Gallery, RWA, Spike Island, St George's, Tobacco Factory, Trinity Centre, UWE, Watershed. BRUTON: At The Chapel, Bruton Museum. BUDLEIGH SALTERTON: Brook Gallery. BURNHAM ON SEA: Princess Theatre and Arts Centre, Seabreeze Gallery. CASTLE CARY: Bailey Hill Bookshop, David Simon Contemporary. CHARD: Hornsbury Mill. CHEDDON FITZPAINE: Hestercombe Gallery. CHIPPENHAM: Chippenham Museum. CHRISTCHURCH: Hatch Gallery, Red House Museum. CLEVEDON: Studio 3 Gallery. CORFE CASTLE: Boilerhouse Gallery, Mortons House Hotel, Seasons Green, Village Stores. CORSHAM: Pound Arts. CREWKERNE: Art and Beyond. CROCKERTON: Bull Mill Arts. CROWCOMBE: Halsway Manor. CULLOMPTON: Cullompton Community College. DEVIZES: Wiltshire Museum. DORCHESTER: Activate, Arts Development Company, Artsreach, Corn Exchange, Dorset Museum & Art Gallery,

Duke's, Frank Herring & Sons, Gallery on The Square, Shire Hall Museum, The Little Keep, Vinyl Van. EAST LAMBROOK: East Lambrook Manor Gardens. EXETER: Academy of Music, Barnfield Theatre, Exeter School of Art, Glorious Art Cafe, Phoenix Arts Centre, Royal Albert Memorial Museum, Southgate Gallery. FROME: Bat Print Studio, Black Swan Arts, Cheese and Grain, Kobi & Teal, Merlin Theatre, Peradam, Raves From The Grave, Rook Lane Arts, Rise Centre. GILLINGHAM: The Idea Works, The Slade Centre. GLASTONBURY: Facets Of Avalon, Glastonbury Abbey, Glastonbury Galleries, Heart Of The Tribe Gallery, Red Brick Building, Rural Life Museum. HATCH BEAUCHAMP: Close Ltd. HESTERCOMBE: Hestercombe Gallery. HONITON: The Beehive, Thelma Hulbert Gallery. ILMINSTER: Ilminster Arts Centre, The Millhouse. IWERNE MINSTER: The Writer's Block. KEYNSHAM: Chocolate Quarter. LANGPORT: Art Tea Zen, Great Bow Wharf, Shakspeare Glass. LYME REGIS: Blue Lias Gallery, Coombe Street Gallery, Fine Art & Framing, Lyme Regis Museum, Malthouse Gallery, Marine Theatre. LYTCHETT MINSTER: Barn Cafe, Courtyard Craft Centre. MARLBOROUGH: Framemakers. MARTOCK: Martock Gallery, Yandles Cafe. MILVERTON: The Coffee Mill. MINEHEAD: Courtyard Framing, Leo Davey Gallery, Regal Theatre. MORCOMBELAKE: Artwave West. MUCHELNEY: Machelney Pottery. NORTH CURRY: Community Café. OTTERTON: Otterton Mill. PEWSEY: McNeill Gallery. POOLE: Arts University Bournemouth, Big Brother Records, Canvas Gallery, Guildhall Gallery, Josephine Wall Gallery, Lighthouse, Gallery Upstairs, Originals, Poole Museum, Towngate Gallery And Framing. PORLOCK: Churchgate Gallery. PORTLAND: B-Side Outpost, The Beehive, White Stones. SALISBURY: Fisherton Mill, Salisbury Arts Centre, Salisbury Museum, Salisbury Playhouse, Studio 53, Vanner Gallery, Wiltshire Gallery, Young Gallery. SEATON: Terrace Arts Café. SEAVINGTON: Village Shop. SHAFTESBURY: The Cygnet, Pictureframes, Shaftesbury Arts Centre. SHEPTON MALLET: Kilver Court, One Craft Gallery. SHERBORNE: Caffe Nero, Old Barn Framing Gallery, The Beat & Track, The Sherborne, Trouville Gallery, Winstone's. SIDMOUTH: East Devon Art

Academy, Flo and Us, Kennaway House, Winstone's. SOMERTON: ACE Arts, Gifted Company & Gallery Coffee Shop. STALBRIDGE: Dike & Sons. STOBOROUGH: Furzebrook Studios. STOKE ST GREGORY: Willow & Wetlands Centre. STOURHEAD: First View Gallery. STREET: Millfield School Atkinson Gallery, Strode Theatre. STURMINSTER NEWTON: The Exchange, Poet's Corner, Wessex Photographic. SWANAGE: Ballard and Bay Gallery, Durlston Castle, Mowlem Theatre, Mulberry Tree Gallery, Quarr Gallery. SYMONDSBURY: Sou'-Sou'-West. TAUNTON: Arts Hub, Brewhouse Theatre, CIC CIC, Fine Art And Framing, Jane Armour Trading, Museum of Somerset, Quantock Art And Framing, Queen's College, Tacchi-Morris Arts Centre, University Centre Somerset. TINCLETON: Sculpture by the Lakes, Tincleton Gallery. TIVERTON: Lantic Gallery. TROWBRIDGE: Arc Theatre, Court Street Gallery, The Lamb, Trowbridge Museum. WAREHAM: Priory Hotel, Purbeck Artisan Yard, Rex Cinema. WARMINSTER: Athenaeum Centre. WATCHET: East Quay. WELLINGTON: Old Brick Workshop, Talent Gallery. WELLS: A2 Gallery, Andelli Art, Bishop's Eye, Heritage Courtyard Gallery and Studios. WEST BAY: Sladers Yard. WEST COKER: Lanes, Old School Room. WESTHAY: Somerset Crafts. WESTON-SUPER-MARE: Playhouse, Weston College. WEYMOUTH: Cove Gallery, Happy Crab Gallery, Weymouth College, Weymouth Pavilion. WILLITON: J Gliddon & Sons. WIMBORNE: Allendale House, Square Records, Walford Mill Craft Centre. WINCANTON: Paper Trees. WIVELISCOMBE: Community Office. WORTH MATRAVERS: Burngate Purbeck Stone Centre. YEOVIL: EPS, Westlands Entertainment Venue, Yeovil Art Space. YETMINSTER: Old School Gallery.

Plus selected TOURIST INFORMATION CENTRES and LIBRARIES throughout Wessex

We are always on the lookout for new EVOLVER OUTLETS. If you are running a venue in Wessex (see map on previous page) that is regularly frequented by arts and culture lovers, please email [simon@evolver.org.uk](mailto:simon@evolver.org.uk) for further information.

## EVOLVER SPONSORS

ACE Arts  
Arnolfini  
Art And Beyond  
Athelhampton House  
Aztec Media  
B-Side  
Bishops Printers  
Black Swan Arts  
Boilerhouse Gallery  
Bournemouth Arts Club  
Bournemouth Symphony Orchestra  
Bridport Arts Centre  
Bull Mill Studio  
CICCIC  
Concerts in the West  
Dorchester Arts  
Dorset Visual Arts  
East Quay  
Heart of the Tribe Gallery  
Ilminster Arts Centre  
Kit Glaisyer Fine Art  
Lighthouse  
Pound Arts  
Royal West of England Academy  
Shaftesbury Arts Centre  
The Slade Centre  
Sladers Yard  
Somerset Art Works  
Sou'-Sou'-West Gallery  
South West Art Courses  
Thelma Hulbert Gallery  
Tincleton Gallery  
Walford Mill  
Wiltshire Creative  
Yeovil Art Space

Our EVOLVER SPONSORS make Evolver Magazine possible. We couldn't do it without their ongoing support and advertising, so we make sure they get priority coverage in these pages and in our Instagram posts.

If you'd like to join them, please email [simon@evolver.org.uk](mailto:simon@evolver.org.uk) to find out about our Sponsorship offer (for example our quarter page Evolver Sponsors pay £190 instead of £260 for each bi-monthly advert).

## FREE LISTINGS

Exhibition and performance listings can be uploaded at [evolver.org.uk](http://evolver.org.uk) or emailed to [listings@evolver.org.uk](mailto:listings@evolver.org.uk)

Please send ALL information in the following order:  
Event, date(s), venue, address (including postcode), times, admission fee (if any), contact number / website, up to 30 words about your event

## EVOLVER MAGAZINE 146

THE WESSEX ARTS AND CULTURE GUIDE

Editor SIMON BARBER

Assisted by SUZY RUSHBROOK  
[suzy@evolver.org.uk](mailto:suzy@evolver.org.uk)

Evolver Writer

FIONA ROBINSON / [fionarobinson.com](mailto:fionarobinson.com)

Graphic Design SIMON BARBER

Front Cover

ROBERT MCPARTLAND 'SWAY'

RWA 172 Open Evolver Magazine Front Cover Prize Winner

## DEADLINE FOR EVOLVER MAGAZINE 147

January and February 2026

FRIDAY 5 DECEMBER



## EVOLVER MEDIA

8 BUCKLAND ROAD, PEN MILL TRADING ESTATE,  
YEOVIL, SOMERSET BA21 5EA

Email [simon@evolver.org.uk](mailto:simon@evolver.org.uk)

Telephone 01935 808441

Website [evolver.org.uk](http://evolver.org.uk)

Hosted by AZTEC MEDIA

Instagram [evolvermagazine](https://www.instagram.com/evolvermagazine)

Published by EVOLVER MEDIA LIMITED

Pre-Press by FLAYDEMOUSE

01935 479453 / [flaydemouse.com](http://flaydemouse.com)

Printed by BISHOPS PRINTERS  
[bishops.co.uk](http://bishops.co.uk)



**BIZARRO**  
PROMOTIONS



## GLAXO BABIES

SIMON CHESTERFIELD  
OMEGA INSTITUTE

THURSDAY 20TH NOVEMBER

## THE LOUISIANA

Wapping Road, Bathurst Terrace, Bristol, BS1 6UA

7.30pm • £12.50 adv / £15.00 door • [wegottickets.com/event/674771](http://wegottickets.com/event/674771)

NEXT ISSUE

## EVOLVER magazine

SILVER ANNIVERSARY

January and February 2026

# WILTSHIRE CREATIVE

### Creedence Clearwater Review

Thursday 13 November  
Salisbury Arts Centre

Celebrate Cosmo's  
Factory with this high-  
energy CCR tribute.



### Peter Knight & John Spiers

Wednesday 19 November  
Salisbury Arts Centre

Folk giants Knight and  
Spiers blend tradition,  
invention and musical  
mastery.



### Jack and the Beanstalk

29 Nov 2025 – 11 Jan 2026  
Salisbury Playhouse

Join Jack's musical quest  
to outwit the giant in a  
festive Salisbury  
pantomime extravaganza!



### Tom Stade: Naughty by Nature

4 December  
Salisbury Arts Centre

Legendary comic Tom  
brings his brand-new  
show of sharp,  
mischievous stand-up.



### From Gold to Rio

Saturday 20 December  
Salisbury Playhouse

Duran Duran and  
Spandau Ballet: two  
iconic bands, one  
unforgettable tribute to  
New Romantic classics.



Book now at  
[wiltshirecreative.co.uk](http://wiltshirecreative.co.uk)

Discover  
what's on!





# CLOSE



## ROCK PAPER SCISSORS

Kate MccGwire | Ted Rogers | Susanna Bauer | Alice Freeman  
Hana Moazzeni | Darren Appiagyei | Peter Randall-Page  
Nicholas Lees | Dean Coates | Anya Paintsil | Amy Stephens

29 Nov - 20 Dec 2025  
& 8 - 17 Jan 2026

Private View | 1-3pm Sat 29 Nov 2025  
CLOSE Gallery, Hatch Beauchamp, Somerset TA3 6AE

ROCK PAPER SCISSORS brings together artists whose works transform elemental materials - stone, wood, fibre, pigment, and found matter - through the imaginative gestures of the hand. Evoking the simplicity and playfulness of the childhood game, the exhibition celebrates the enduring creativity that arises from making something from almost nothing.

Introducing CLOSE COLLECTIONS & SHOP. Combining works by gallery artists and a curated mix of original art, limited editions, and everyday items that reconnect us with the joy of making and the spirit of play.